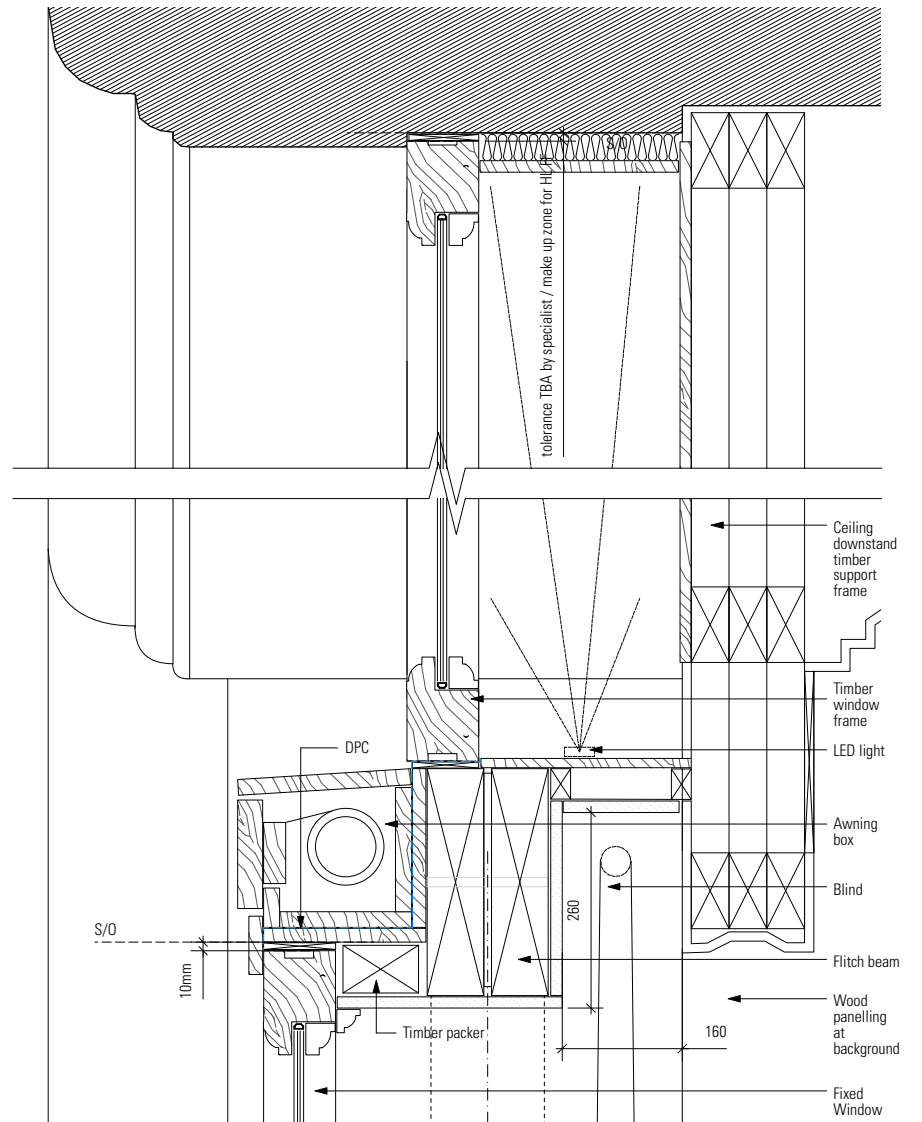
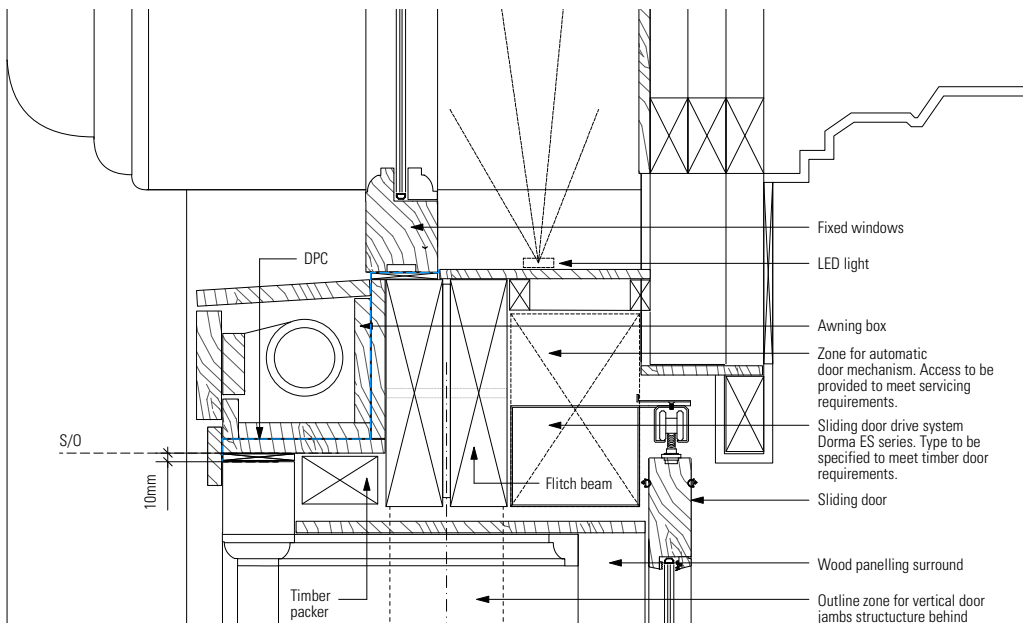


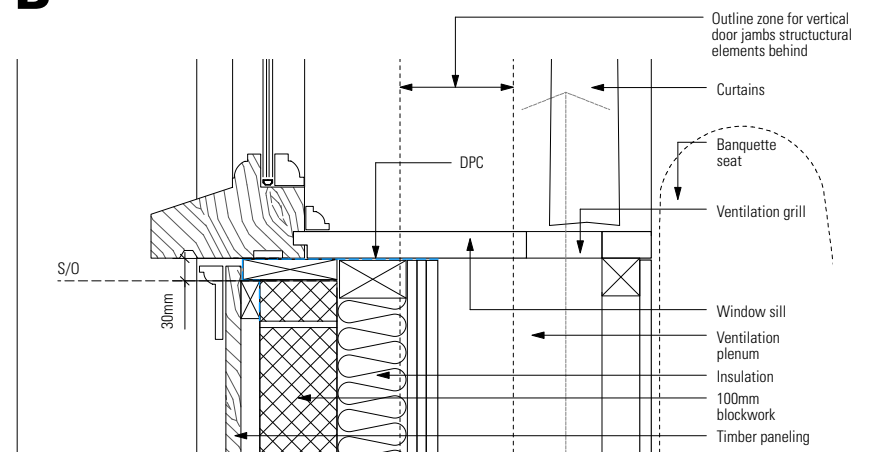
A Typical Detail at Shopfront / Fixed Window Head Detail



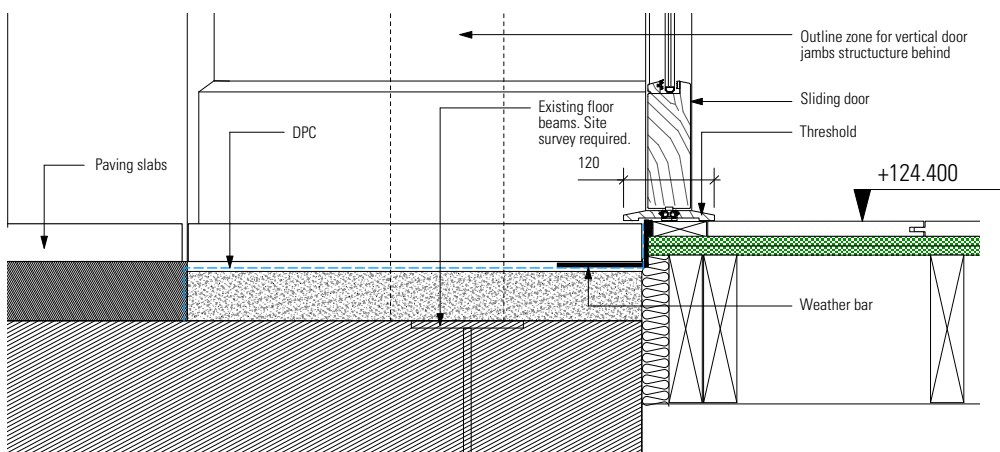
B Typical Detail at Shopfront / Awning - Fixed Window



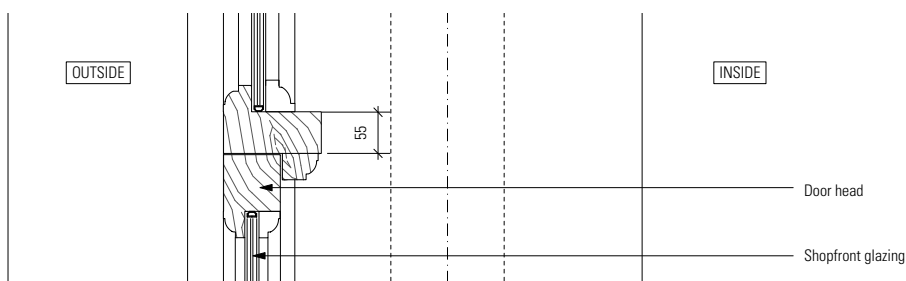
C Typical Detail at Shopfront / Awning - Sliding Doors



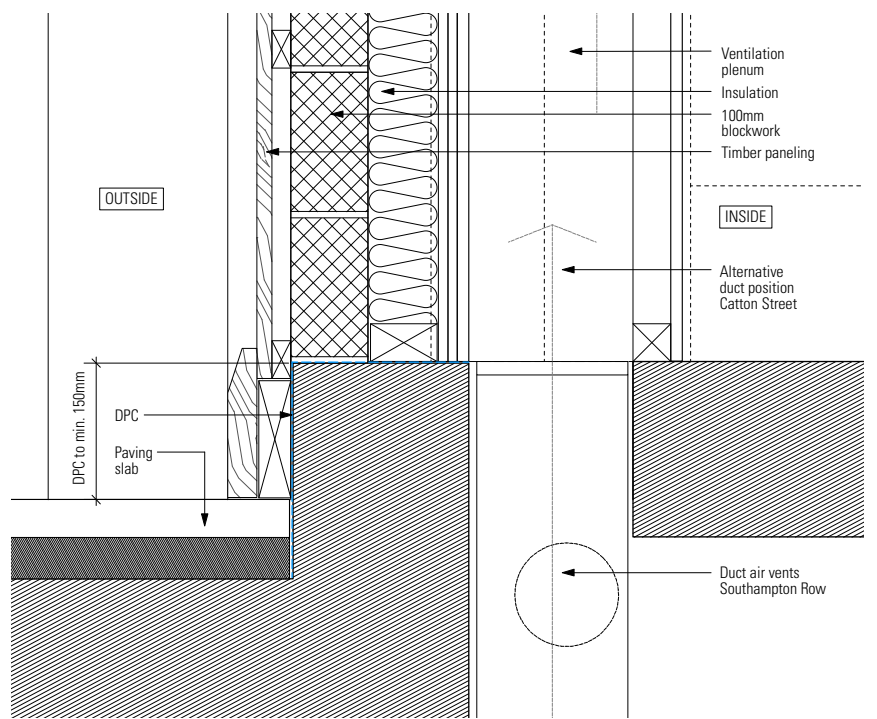
E Typical Detail at Shopfront / Fixed Window Cill Detail



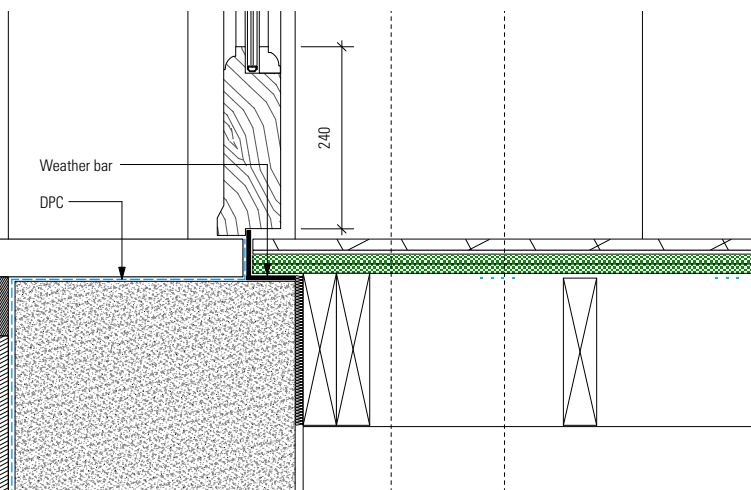
H Typical Detail at Shopfront / Threshold Detail - Sliding Door



D Typical Detail at Shopfront / Door Head - Fixed Window



G Typical Detail at Shopfront / Banquette Seating



F Typical Detail at Shopfront / Door Threshold

Note:
All structural frame elements to be reviewed by specialist.
Refer to notes 586GE05 and 586GE06.

PLANNING

Information contained within this drawing is the sole copyright of HODA Ltd. and is not to be reproduced without express permission. No implied licence exists. This drawing not to be used for land transfer or valuation purposes. Do not scale from this drawing. All dimensions & levels are to be checked on site by the contractor. Issued for purposes indicated only. Drawing errors and omissions to be reported to the architect.

Revisions	Date	Description
C1	10/11/14	Issued for Construction
C2	17/06/15	Structural window support amended, awning support, door threshold and stalliser details updated
P1	25/11/15	Issued for planning

Client	Havza Ltd
Project	2-6 Southampton Row
Drawing title	Typical Detail at Shopfront/ Section

HARPER DOWNIE ARCHITECTURE		Gate House 1 St John's Square London EC1M 4DH	
T +44 20 7490 7674 studio@harperdownie.com www.harperdownie.com		Status	PLANNING
Drawn	RP	Checked	AI
Scale	1:5@A1	Date	Nov 2014
Drwg. No.	586dJ065	Revision	P1