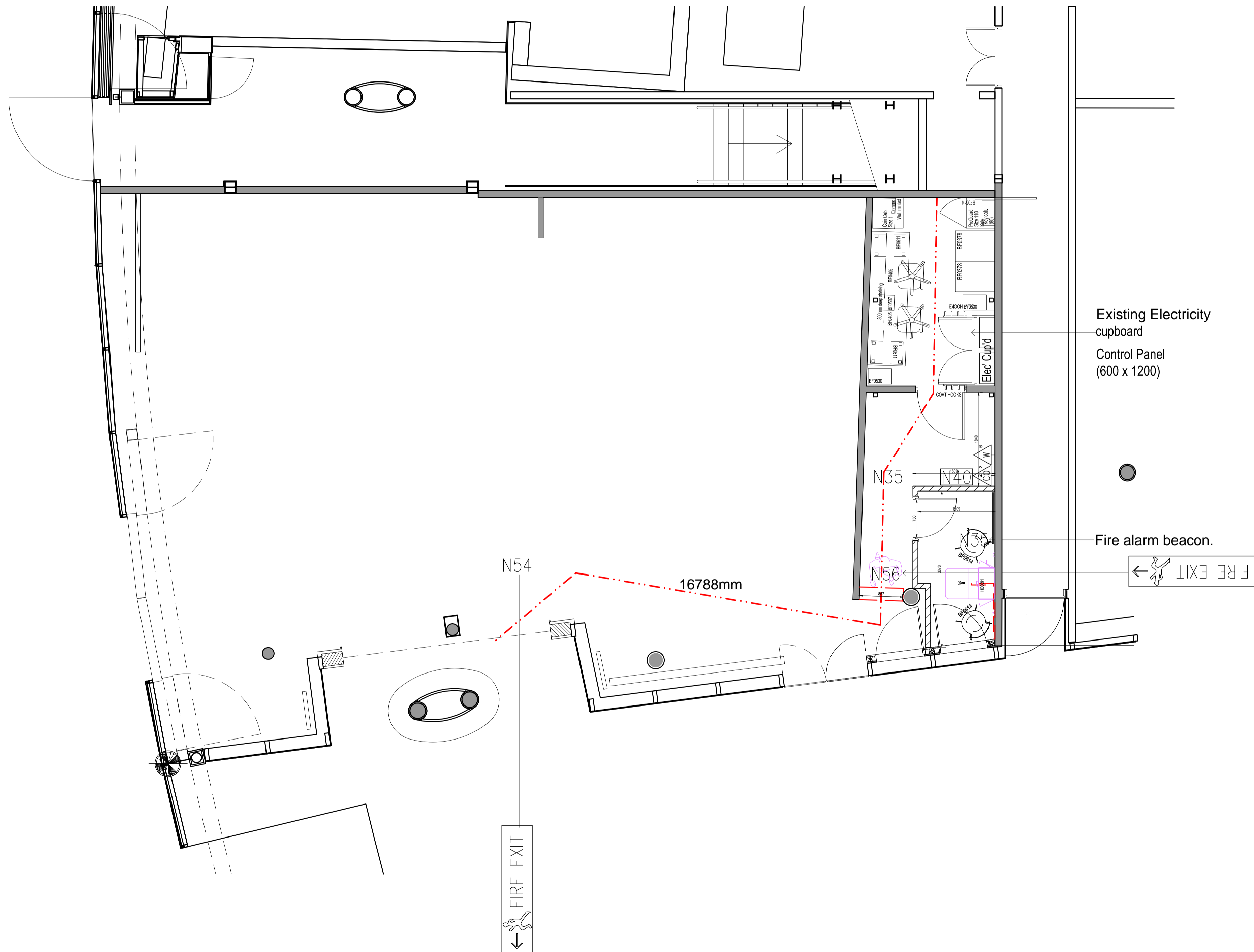


# PROPOSED PLAN

## FIRE SAFETY SIGN KEY

Code no.	Description of Sign
N1	FIRE ACTION by fire alarm call point
N3	KEEP LOCKED SHUT – lift motor and electrical rooms etc.
N4	CAUTION FLAMMABLES STORED HERE
N5	FIRE ESCAPE KEEP CLEAR – outside of panic bolted door
N6	FIRE DOOR KEEP SHUT – both sides of the fire resisting doors
N7	FIRE ALARM – above each fire alarm point
N8	PUSH BAR TO OPEN – over push bar on panic bolted doors
N11	AUTOMATIC FIRE DOOR – KEEP CLEAR – on exposed face of door held open on electro-magnet
N12	AUTOMATIC FIRE SHUTTER KEEP CLEAR – both sides
N13	FIRE ALARM BEACON
N21	INCASE OF FIRE BREAK GLASS FOR KEY – by key in box
N23	THANK YOU FOR NOT SMOKING – in sales area
N25L	SLIDE TO OPEN LEFT – fitted to sliding doors
N25R	SLIDE TO OPEN RIGHT – fitted to sliding doors
N26	TO BE KEPT UNLOCKED DURING WORKING HOURS – by specific doors
N28	FIRE EXIT RUNNING MAN & ARROW RIGHT/LEFT DOUBLE SIDED – hanging sign
N29	MAGNETIC CEILING ANCHORS (2 per sign) – with use for item N28
N30	HANGING WIRES (2 per sign) – with use for item N28
N31	BREAK GLASS FOR KEY TO OPEN DOOR ACROSS ROOF
N33	INCASE OF FIRE DO NOT USE LIFT, USE STAIRS
N34	PUSH PAD TO OPEN
N35	THIS AREA MUST BE KEPT CLEAR AT ALL TIMES
N36	TO OPEN BREAK GLASS TUBE
N37	SECURE SHUTTERS OPEN WHEN PREMISES ARE OCCUPIED
N38	NO EXIT
N39	THIS STAIRCASE AND EXIT WAY TO BE KEPT CLEAR OF GOODS, BINS, RUBBISH AND OBSTRUCTIONS
N40	Pictorial extinguisher sign 200mm x 200mm
N45	Pictorial extinguisher sign 300mm x 400mm
N49	Fire exit running man & arrow up/straight on 400mm x 150mm
N50	Fire exit running man & arrow up/straight on 600mm x 200mm
N51	Fire exit running man & arrow down 400mm x 150mm
N52	Fire exit running man & arrow down 600mm x 200mm
N53	Fire exit running man & arrow left 400mm x 150mm
N54	Fire exit running man & arrow left 600mm x 200mm
N55	Fire exit running man & arrow right 400mm x 150mm
N56	Fire exit running man & arrow right 600mm x 200mm
N57	Fire exit running man & arrow down left 400mm x 150mm
N58	Fire exit running man & arrow down left 600mm x 200mm
N59	Fire exit running man & arrow down right 400mm x 150mm
N60	Fire exit running man & arrow down right 600mm x 200mm
N61	Fire exit running man & arrow up left 400mm x 150mm
N62	Fire exit running man & arrow up left 600mm x 200mm
N63	Fire exit running man & arrow up right 400mm x 150mm
N64	Fire exit running man & arrow up right 600mm x 200mm



NOTES  
Do not scale this drawing

24.11.15	CONS_ROOM_UPDATED.
REV_B	
07.10.15	FIRE_ALARM_BEACON_ADDED
REV_A	
29.09.15	First issue
---	



NOTTINGHAM  
NG90 1BS  
Tel No 0115 9506111

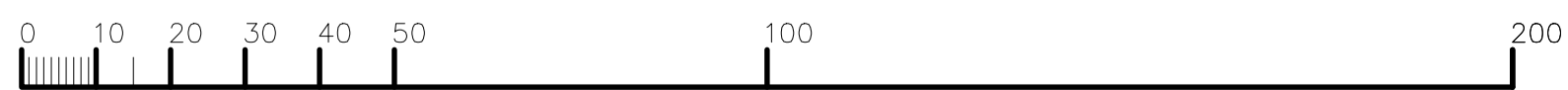
Contractors Name	Contractors Details
	T: +44 (0) 20 7539 1200
	E: +44 (0) 20 7539 1201
	www.cgluk.com
Contractor's Ref	C231832/110

Project Name  
Boots Kings Cross

Drawing Title  
Proposed Fire Strategy Plan

Dept Department  
Drawn By LC  
Approved GJ  
Scale 1:50  
Date 17:09:15

Drq No	Rev
1126/C233427/110	B



K:\0000 Boots\PI5-144 Boots Kings Cross (1126)\Boots DWG Structure\WORK-IN-PROGRESS\100-119 GA\autocad\1126110A.dwg