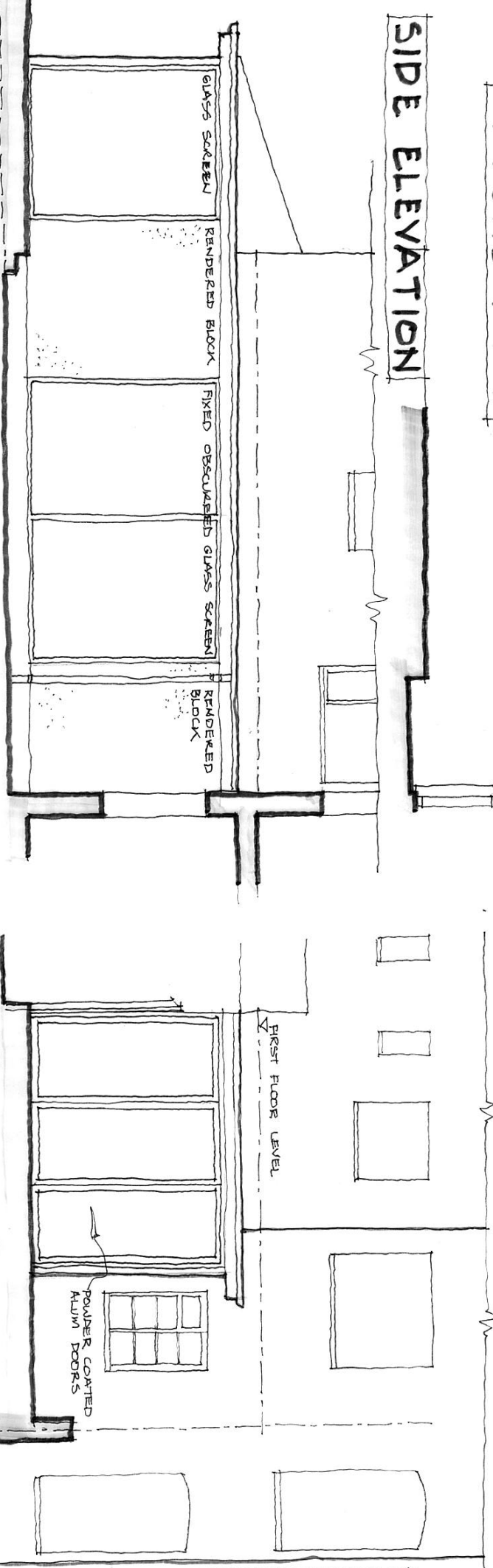


GROUND FLOOR

SIDE ELEVATION



REAR ELEVATION

Project:
23 MACKESON RD
LONDON NW3 2LU

Drawing title:
PROPOSALS FOR
GROUND FLOOR FLAT

2064-01^A
I:SD@A3
29.10.15



78 Whiting Street
 Bury St Edmunds
 Suffolk IP33 1NX
 Tel: 01284 704545
 Fax: 01284 706023
 johnstepbing@stepbichitectural.co.uk

John Stepbing
Architect

REVA: REVISED FOR PLANNING 2015