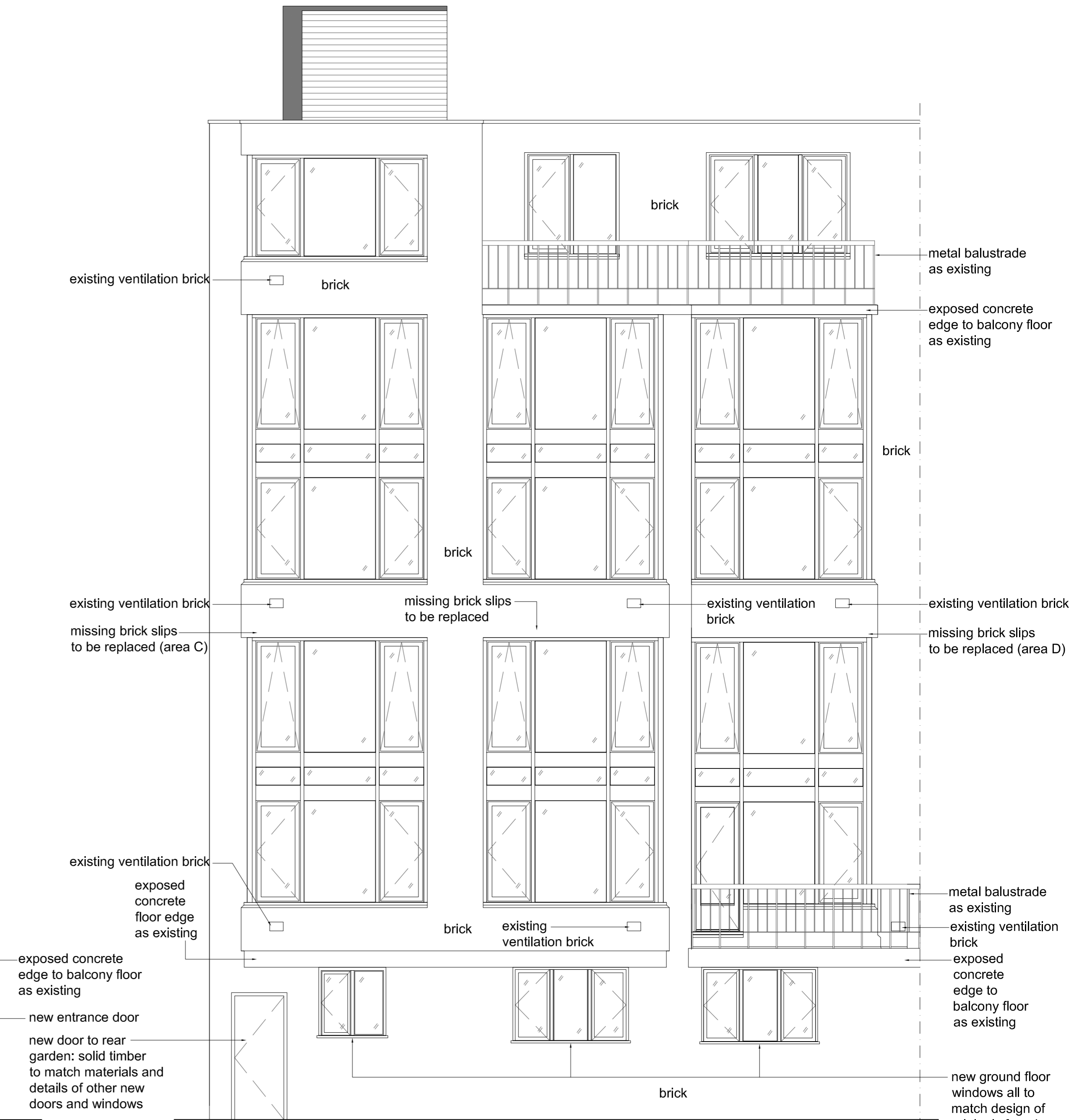
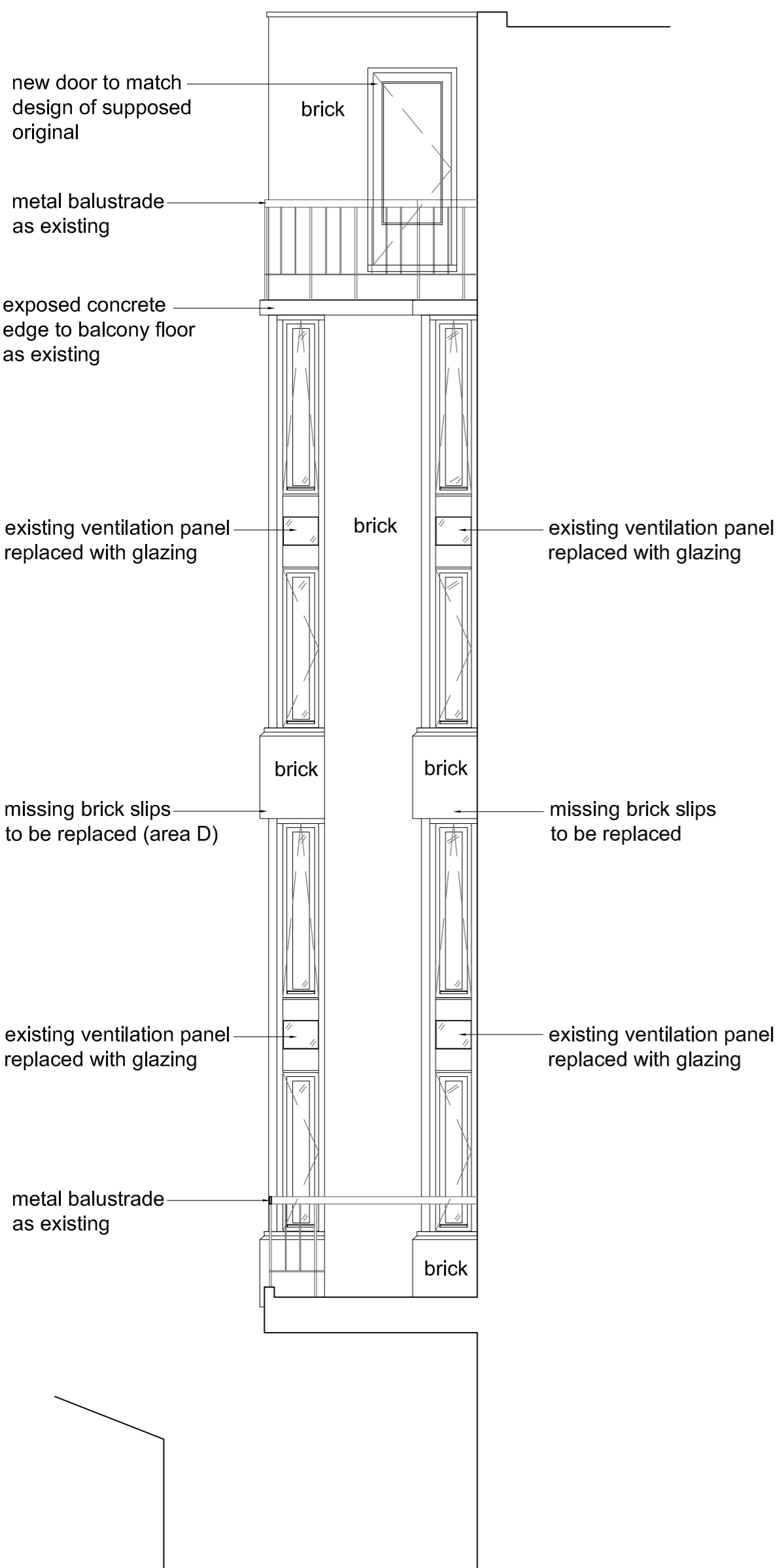


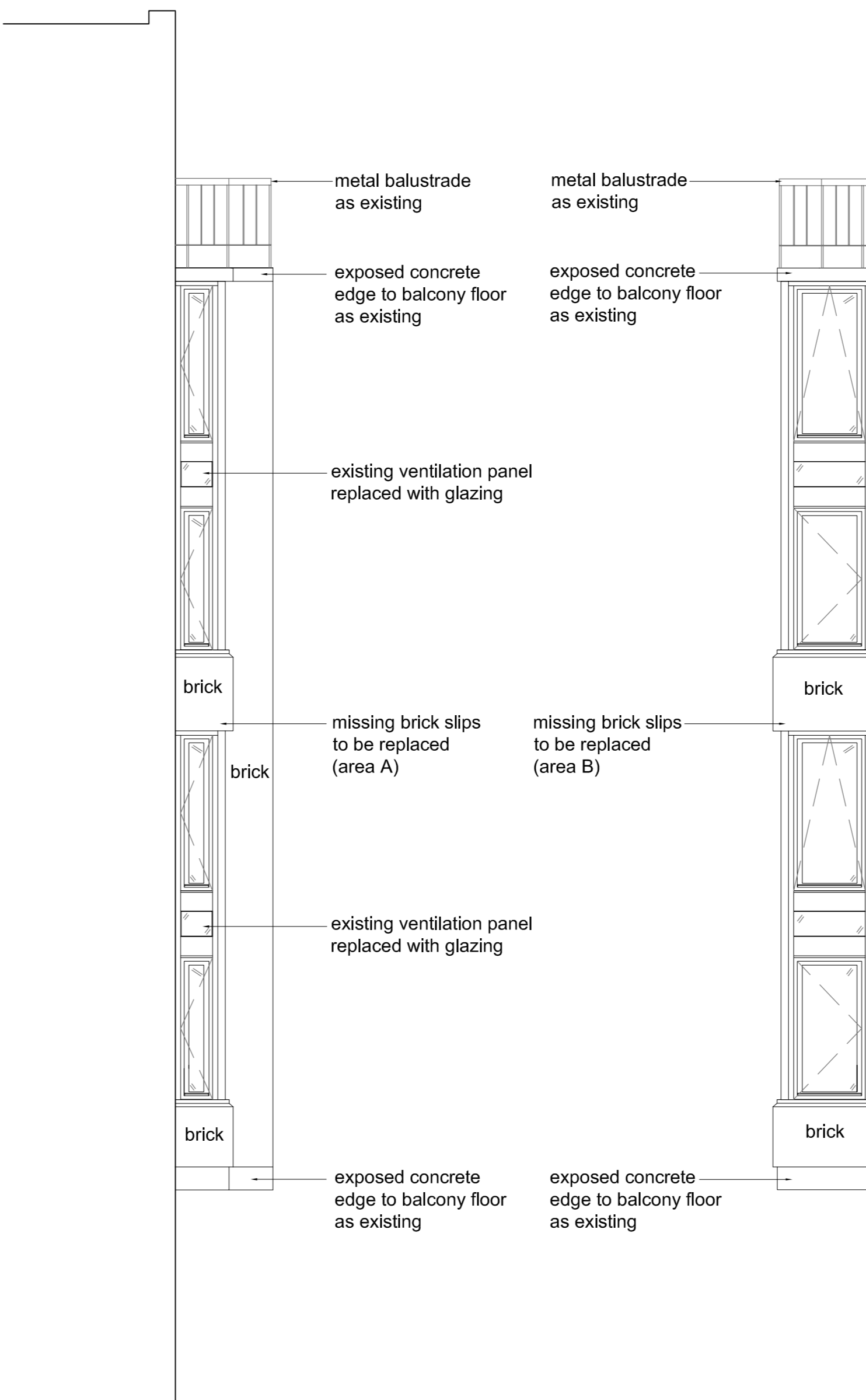
FRONT ELEVATION FACING NORTH-EAST



REAR ELEVATION FACING SOUTH-WEST



SIDE ELEVATION FACING SOUTH-EAST



SIDE ELEVATION FACING NORTH-WEST

All doors and windows, including associated timber frameworks, etc. to be replaced with new double-glazed, timber frame doors and windows to match the existing/original as closely as possible. Opening action of windows to be altered as indicated in the drawings. Ventilation (not shown) to be incorporated into design of new windows and doors.