

0m 1m 5m 10m

Painted timber sash windows to approved detail

No. 23 Hampstead Hill Gardens

Painted timber sash windows to approved detail

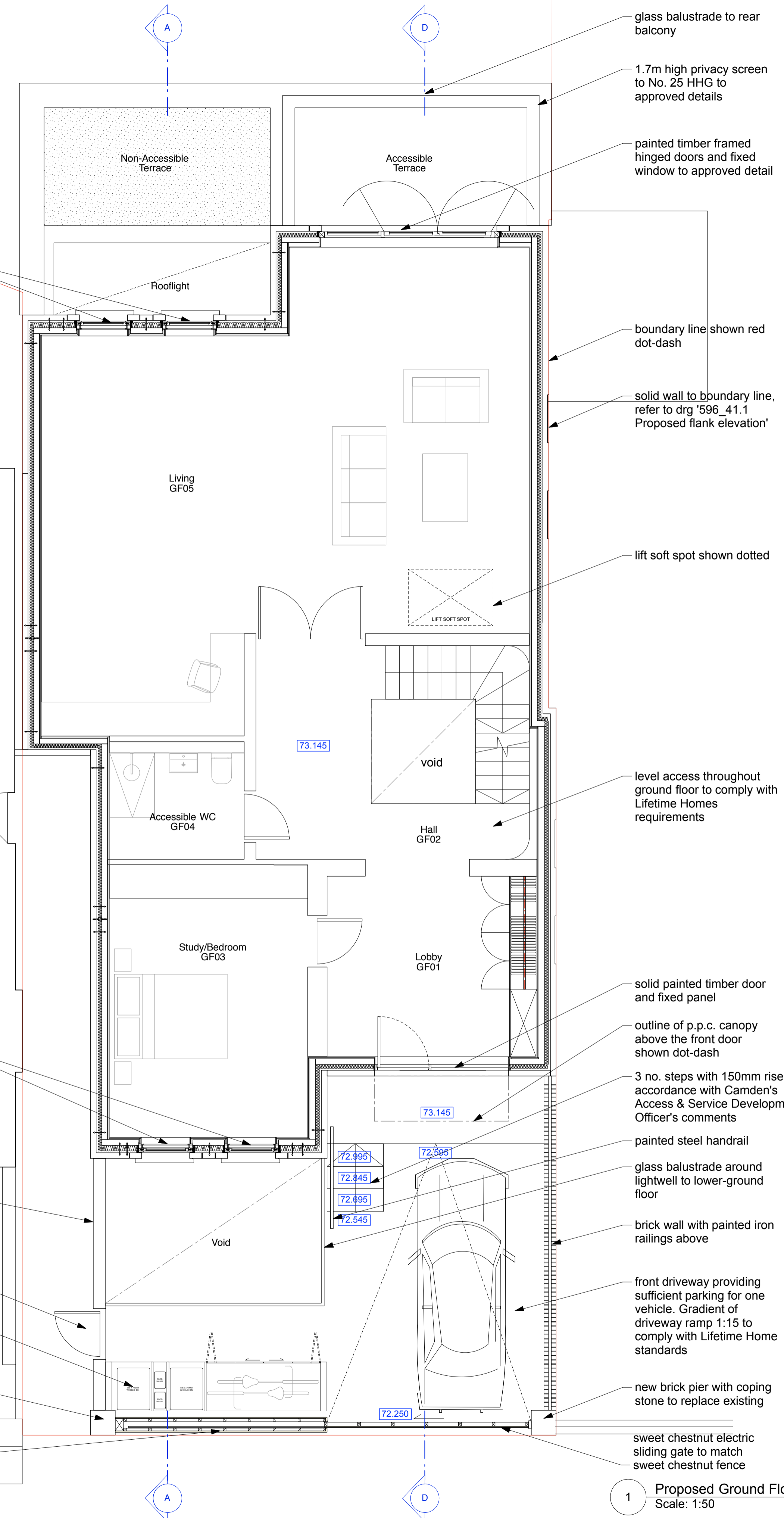
brick wall to approved sample

sweet chestnut gate

sweet chestnut refuse and bike store, sized as previously approved arrangement

new brick pier with coping stone

sweet chestnut timber fence, height to align with bike and refuse store beyond



glass balustrade to rear balcony

1.7m high privacy screen to No. 25 HHG to approved details

Painted timber framed hinged doors and fixed window to approved detail

boundary line shown red dot-dash

solid wall to boundary line, refer to drg '596_41.1 Proposed flank elevation'

lift soft spot shown dotted

level access throughout ground floor to comply with Lifetime Homes requirements

solid painted timber door and fixed panel

outline of p.p.c. canopy above the front door shown dot-dash

3 no. steps with 150mm risers in accordance with Camden's Access & Service Development Officer's comments

Painted steel handrail

glass balustrade around lightwell to lower-ground floor

brick wall with painted iron railings above

front driveway providing sufficient parking for one vehicle. Gradient of driveway ramp 1:15 to comply with Lifetime Home standards

new brick pier with coping stone to replace existing

sweet chestnut electric sliding gate to match sweet chestnut fence

1 Proposed Ground Floor Plan Scale: 1:50

REVISIONS	DESCRIPTION	DATE	BY	CHECKED
A	21/9/15 for coordination			
B	11/9/15 front door area omitted, levels changed, accessible terrace reduced			
C	12/9/15 internal door control and platform lift added			
D	8/10/15 planning application			
E	20/10/15 minor material amendment			
F	18/11/15 minor material amendment			
G	18/11/15 minor material amendment, privacy screen to No. 25 HHG added			
H	19/11/15 minor material amendment, doors to lift rooms, lift to study/bedroom & lift to WC have been amended in accordance with Camden's Access & Services Development Officers comments			

planning

DRAWING NOT TO BE SCALED.
ALL DIMENSIONS TO BE CHECKED ON SITE.
REFER TO ALL OTHER RELEVANT DRAWINGS AND SPECIFICATIONS.
IN CASE OF ANY DISCREPANCY OR AMBIGUITY REFER TO CA

PROJECT	Hampstead Hill Gardens
DRAWING	Proposed GF plan
SCALE	1:50 @ A1
DATE	Nov-15
DRAWING	596_21.1
REV	G

Walker Bushe Architects
Buildings and Interiors
6 Highbury Corner
Highbury Crescent
London N5 1RD
020 7697 0707
020 7697 0808
studio@walkerbushe.co.uk