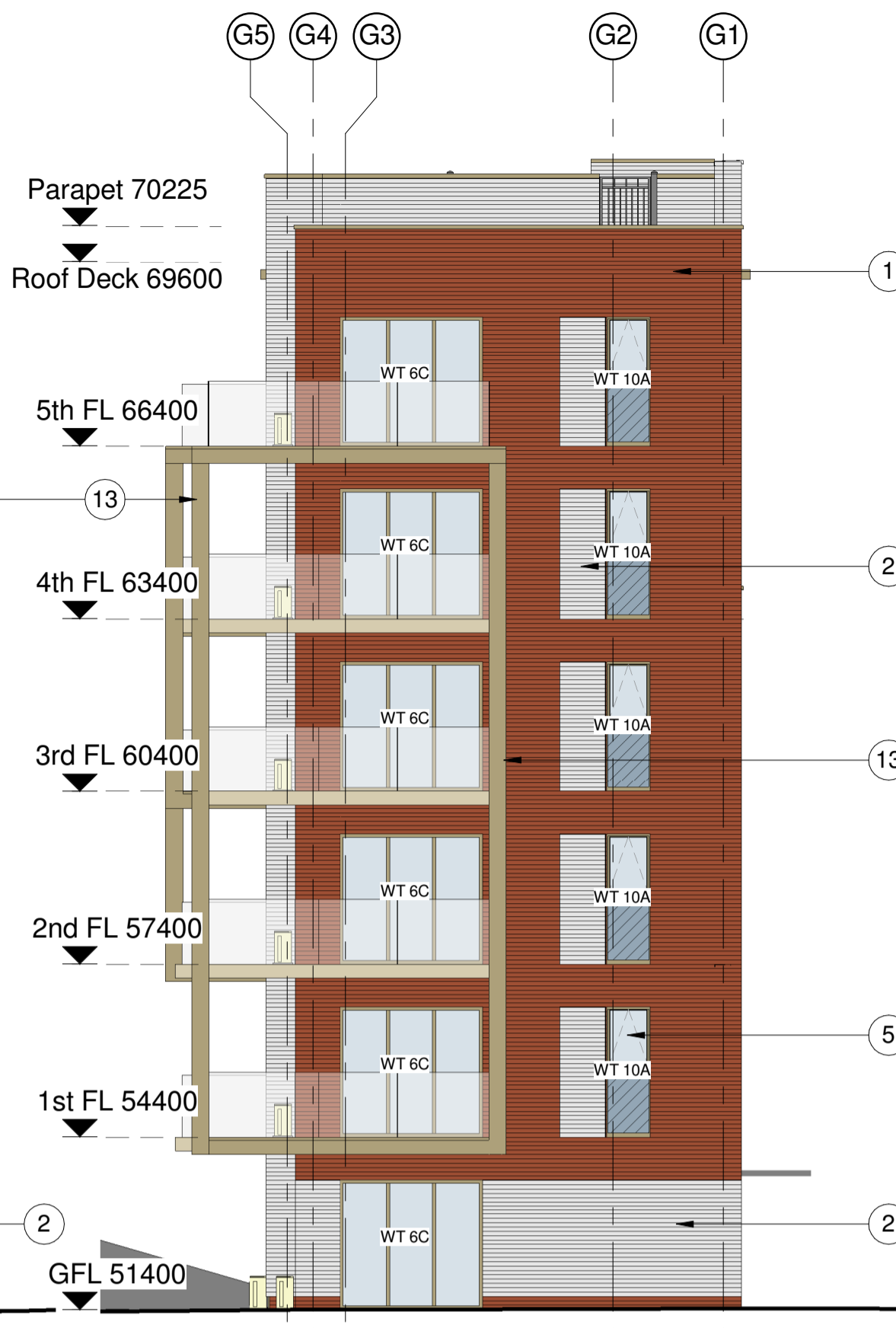


NOTE: Elevations to be read in line with: A31-G01 - Curtain Wall Details Block G A32-G01 - External Door Schedule Block G A31.4-01 to 03 - Window Types Schedule Sheet 1 to Sheet 3

This drawing is copyright and shall not be reproduced or used for any other purpose without the written permission of the Architects. This drawing must be read in conjunction with all other related drawings and documentation. It is the contractors responsibility to ensure full compliance with the Building Regulations. Do not scale from this drawing, use figured dimensions only. It is the contractors responsibility to check and verify all dimensions on site. Any discrepancies to be reported immediately. If in doubt ask. Materials not in conformity with relevant British or European Standards/Codes of practice or materials known to be deleterious to health & safety must not be used or specified on this project. Materials known to contain asbestos contaminated materials (ACM's) in the manufacture or installation process have not been specified and must not be used on this project



Block G South
1 : 100



Block G East
1 : 100

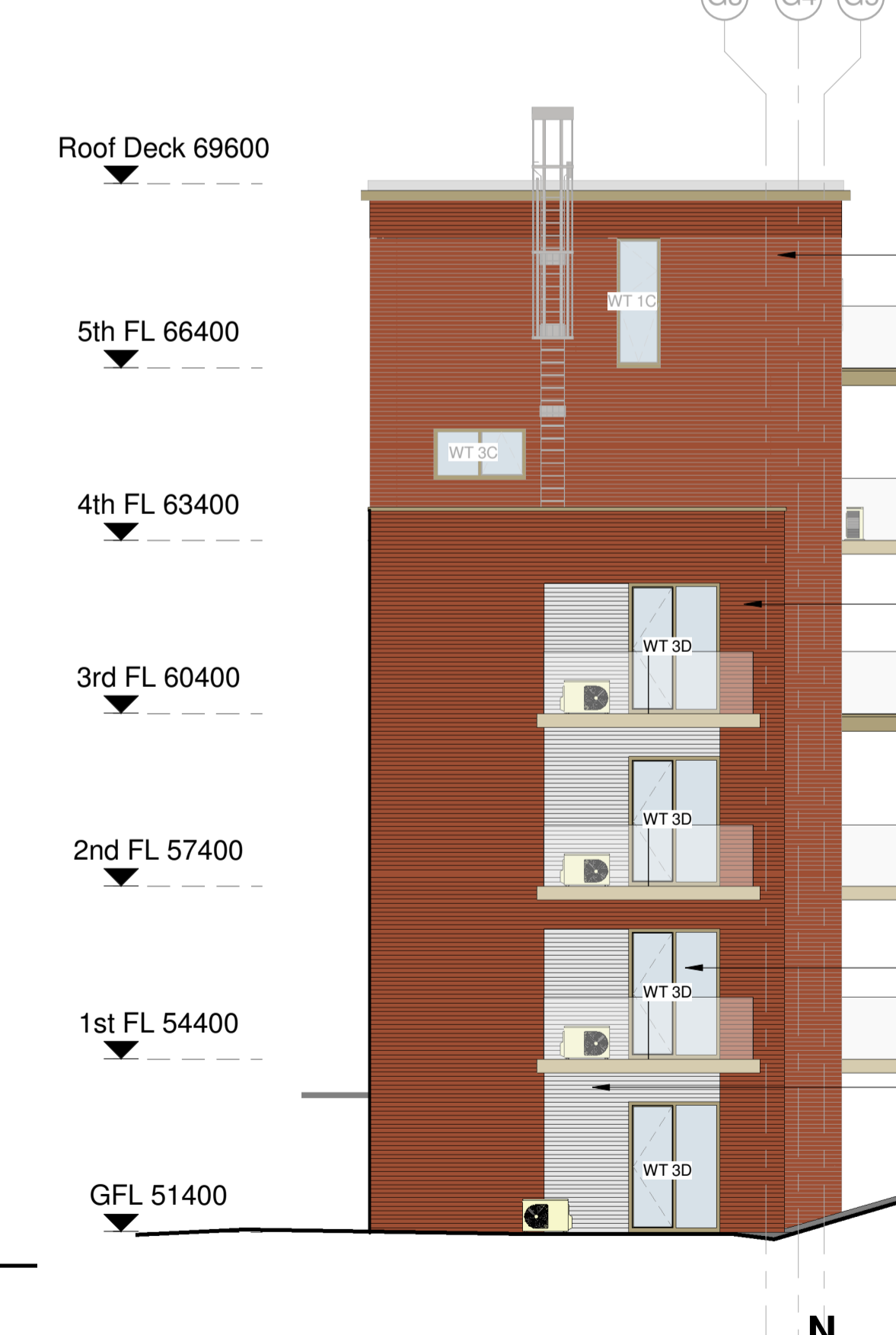
Materials Key:

- 1 Red-Multi Facing Brickwork. NBS Ref: External multiple leaf wall above dpc masonry system. 25-10-55/123 Type A (Red Bricks)
- 2 White Facing Brickwork. NBS Ref: External multiple leaf wall above dpc masonry system. 25-10-55/123 Type B (White Bricks)
- 3 High Pressure Laminate Rainscreen Cladding. NBS Ref: Drained and back-ventilated rainscreen cladding. 25-80-70/120 Type A (Trespa)
- 4 Porcelain Rainscreen Cladding. NBS Ref: Drained and back-ventilated rainscreen cladding. 25-80-70/120 Type B (Stone to Entrances)
- 5 Aluminium Window System. NBS Ref: Aluminium framed windows. 25-50-95/125 Types A-G
- 6 Aluminium Curtain Walling System. NBS Ref: Stick curtain walling system. 25-25-15/175 Type A (Curtain Walling to non residential areas)
- 7 Aluminium Curtain Walling System. NBS Ref: Stick curtain walling system. 25-25-15/175 Type B (Curtain Walling to penthouse level)
- 8 Balconies. NBS Ref: Pre-fabricated balcony structure. 20-05-80/140.
- 9 Laminated Glazed Balustrading. NBS Ref: Balustrade and guarding system. 25-25-10/110 Type A
- 10 Powder Coated Steel Balustrading. NBS Ref: Balustrade and guarding system. 25-25-10/110 Type B
- 11 Timber Cladding. NBS Ref: Timber weatherboarding system. 25-80-95/195
- 12 Timber Screening. NBS Ref: TBC
- 13 Material to match - Metallic Bronze Aluobond Cladding. NBS Ref: Rigid sheet cladding system. 25-80-76/170 or Brushed Anodised Finish currently on Proposed Frameless Balustrade Fixing.
- 14 Glazed Facing Brickwork. NBS Ref: External multiple leaf wall above dpc masonry system. 25-10-55/TBC
- 15 Penthouse Solid Privacy Screen. NBS Ref: TBC
- 16 Suspended Green Wall System. Supplier, Type & System TBC

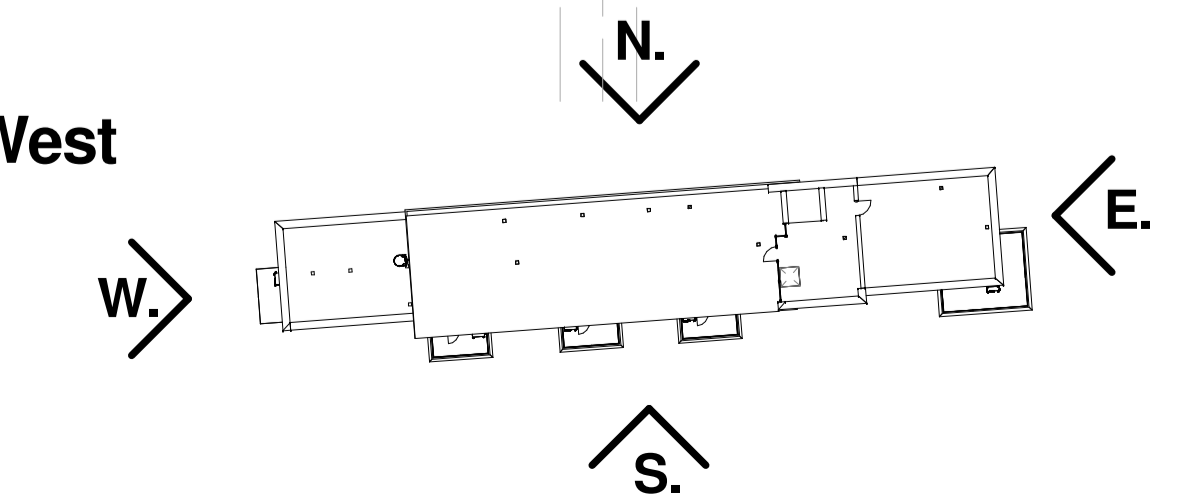
Revision table with columns for No, Date, Description, and By. Includes entries for facade updates, window type changes, and material specifications.



Block G North
1 : 100



Block G West
1 : 100



CLIENT: Network Rail BALLYMORE
PROJECT: West Hampstead Square
TITLE: Block G Elevations
DRAWING STATUS: CONSTRUCTION
DRAWN: AKS, CHECKED: JA
SCALE: As indicated @ A1
DATE: 03/15/13
WCEC architects
South Building, Staple Inn Buildings, London, WC1V 7PZ
L020 3388 0019, e: email@wcec.co.uk, www.wcec.co.uk
JOB NO.: 12-316, DRAWING NO.: A00-G21, REV: AA