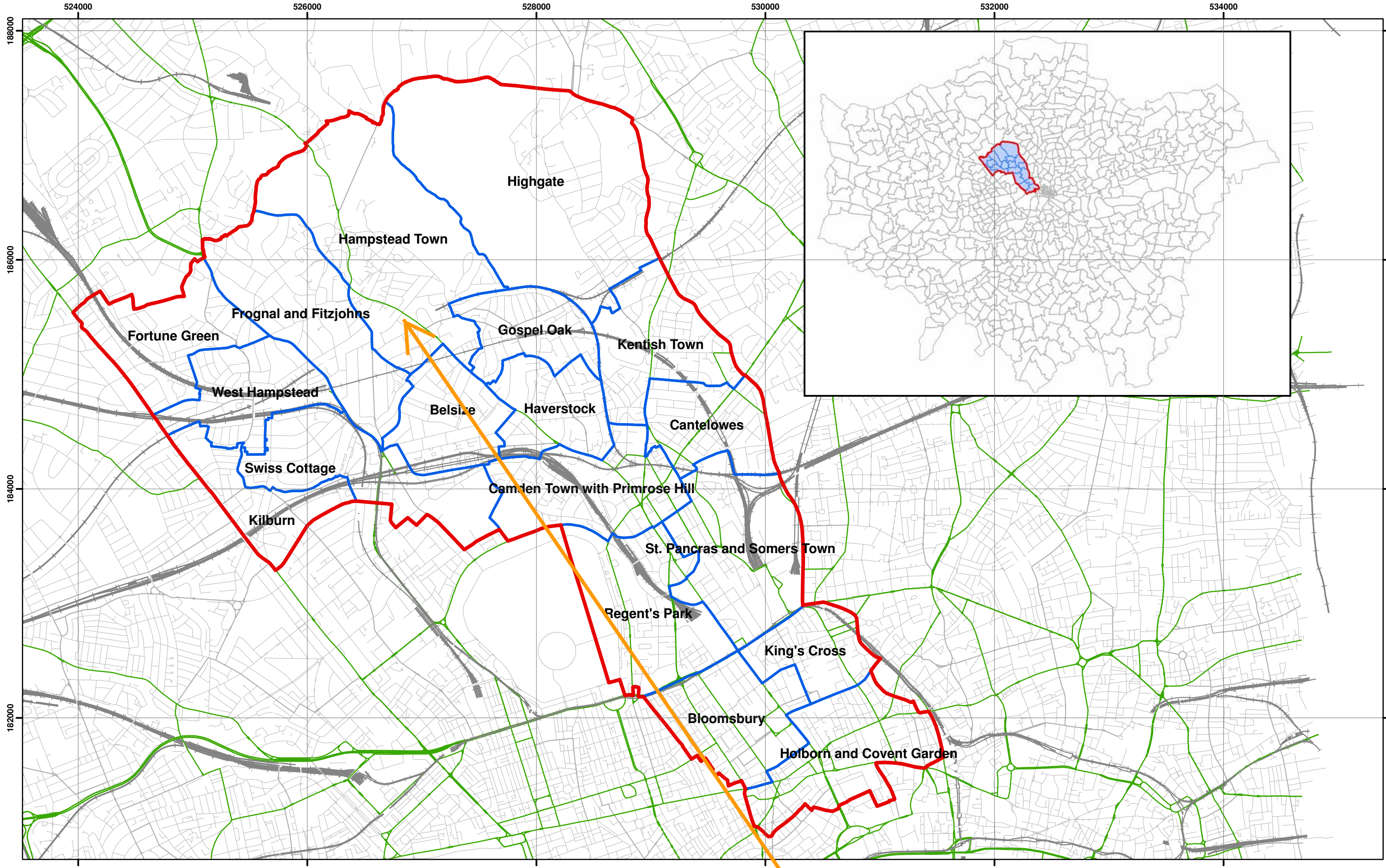


39 ROSSLYN HILL

APPENDIX A – MARK UP HYDRO-GEOLOGICAL FIGURES.



Scale at A3: 1:30,000

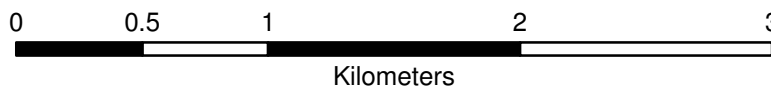
Coordinate System:
British National Grid
GCS_OSGB_1936

Legend

- █ London Borough of Camden
- █ Camden Wards
- Railway Lines
- A Roads

39 Rosslyn Hill

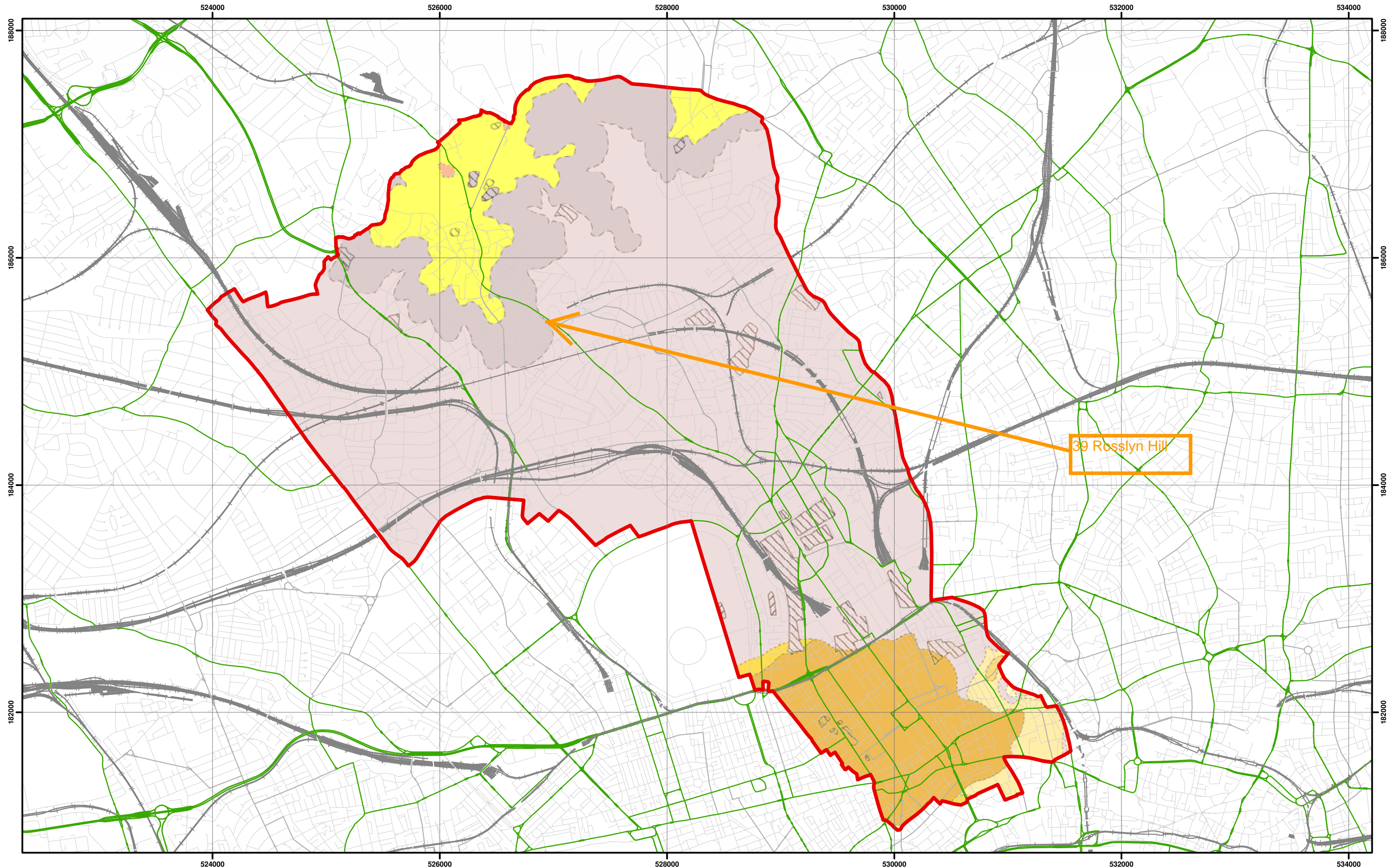
**Camden Geological, Hydrogeological
and Hydrological Study**
Camden Administrative Boundaries



213923

FIGURE

1



Data source - BGS Mapping - Scale 1:10,000



Scale at A3: 1:30,000

Coordinate System:
British National Grid
GCS_OSGB_1936

Legend

- London Borough of Camden
- Railway Lines
- A Roads

- MADE GROUND
- WORKED GROUND

BGS 1:10K Artificial Ground

- ALLUVIUM
- HACKNEY GRAVEL FORMATION
- LANGLEY SILT FORMATION
- LYNCH HILL GRAVEL FORMATION
- STANMORE GRAVEL FORMATION

BGS 1:10K Solid Geology

- BAGSHOT FORMATION
- CLAYGATE MEMBER
- LAMBETH GROUP
- LONDON CLAY FORMATION

Camden Geological, Hydrogeological and Hydrological Study

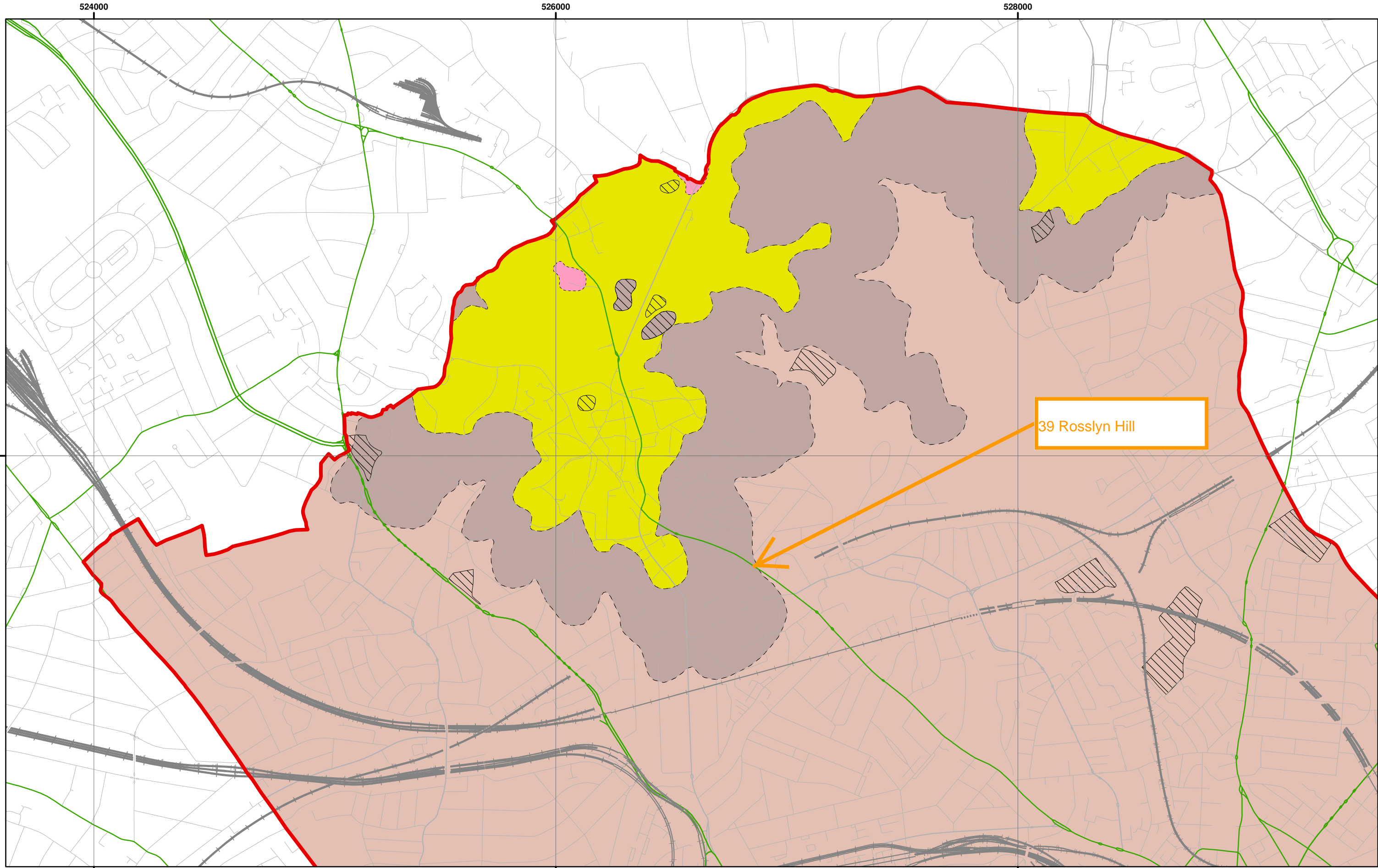
Camden Geological Map

NB: Geological boundaries are largely indicative based on available geological mapping data

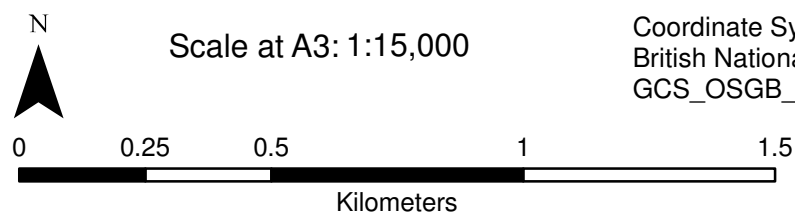
213923

FIGURE

3



Data Source: BGS Mapping - Scale 1:10,000



Coordinate System:
British National Grid
GCS_OSGB_1936

Legend



London Borough of Camden



Railway Lines



A Roads

BGS 1:10K Artificial Ground

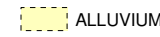


MADE GROUND



WORKED GROUND

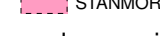
BGS 1:10K Drift Geology



ALLUVIUM



HACKNEY GRAVEL FORMATION



LANGLEY SILT FORMATION



LYNCH HILL GRAVEL FORMATION

STANMORE GRAVEL FORMATION

BGS 1:10K Solid Geology



BAGSHOT FORMATION



CLAYGATE MEMBER



LAMBETH GROUP



LONDON CLAY FORMATION

Camden Geological, Hydrogeological and Hydrological Study

North Camden Geological Map

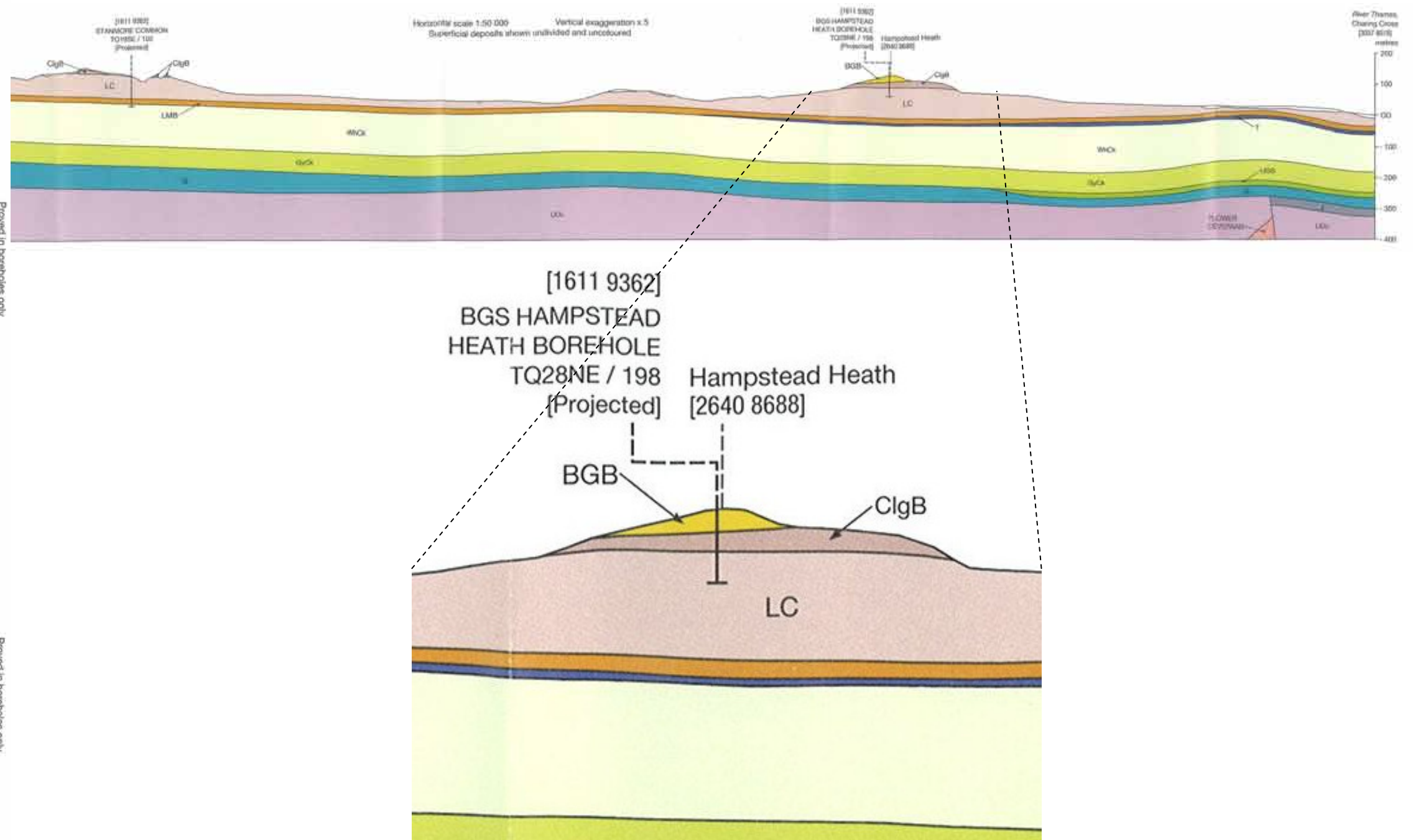
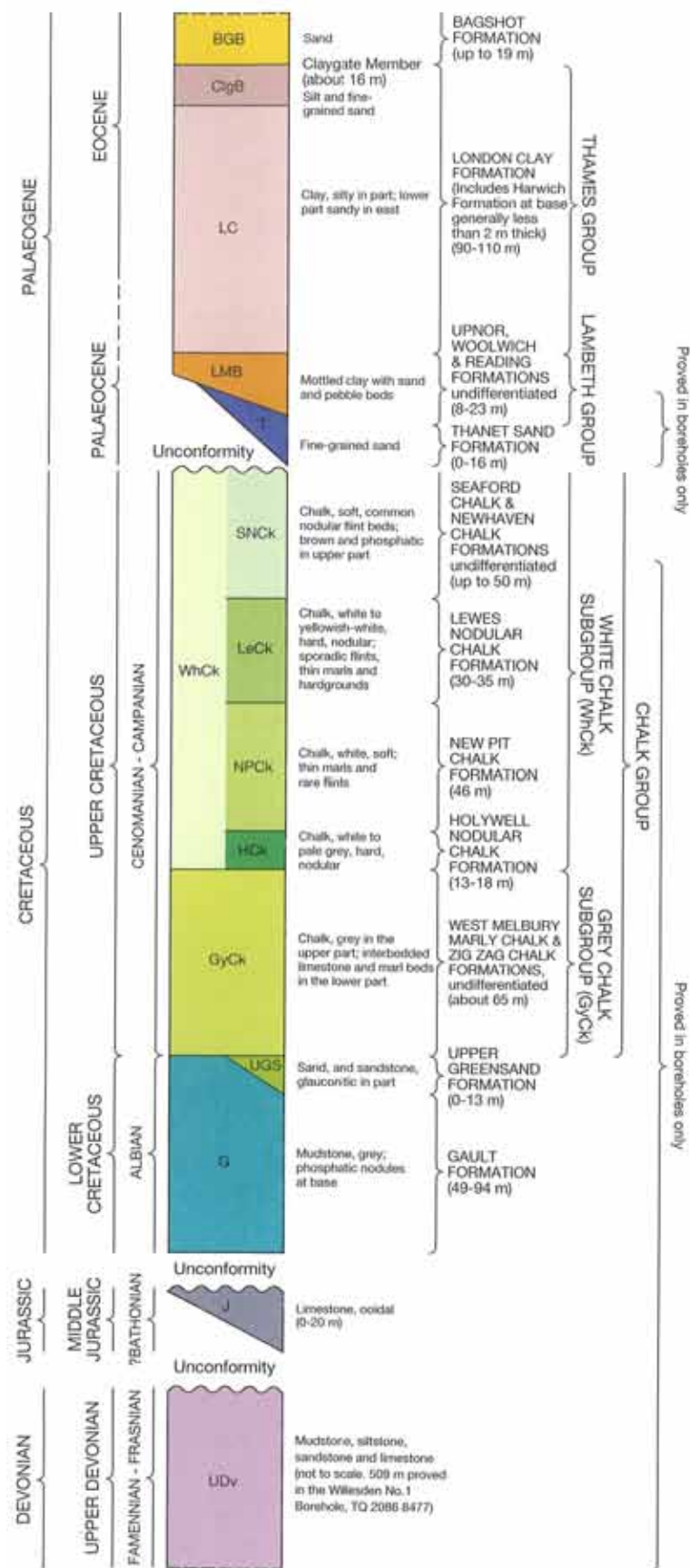
213923

FIGURE

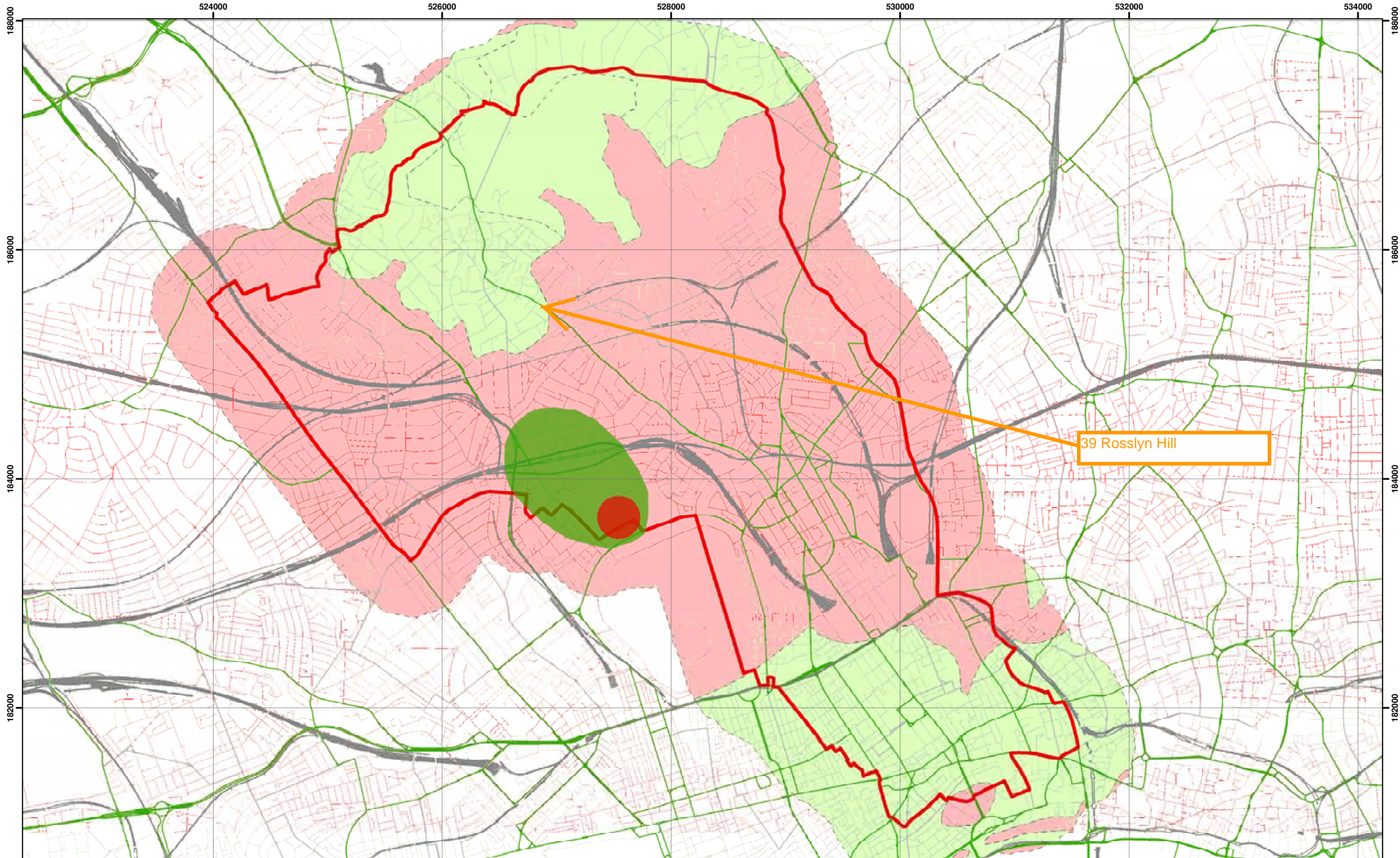
4

NB. Geological boundaries are largely indicative based on available geological mapping data

Scale 1:2500 (1 cm to 25 m)



**Camden Geological, Hydrogeological
and Hydrological Study**
Geological Long Section (NW – SE)



Environment Agency Aquifer Designation based on BGS Mapping

N

Scale at A3: 1:30,000

Coordinate System:
British National Grid
GCS_OSGB_1936

0 0.5 1 2 3
Kilometers

Legend

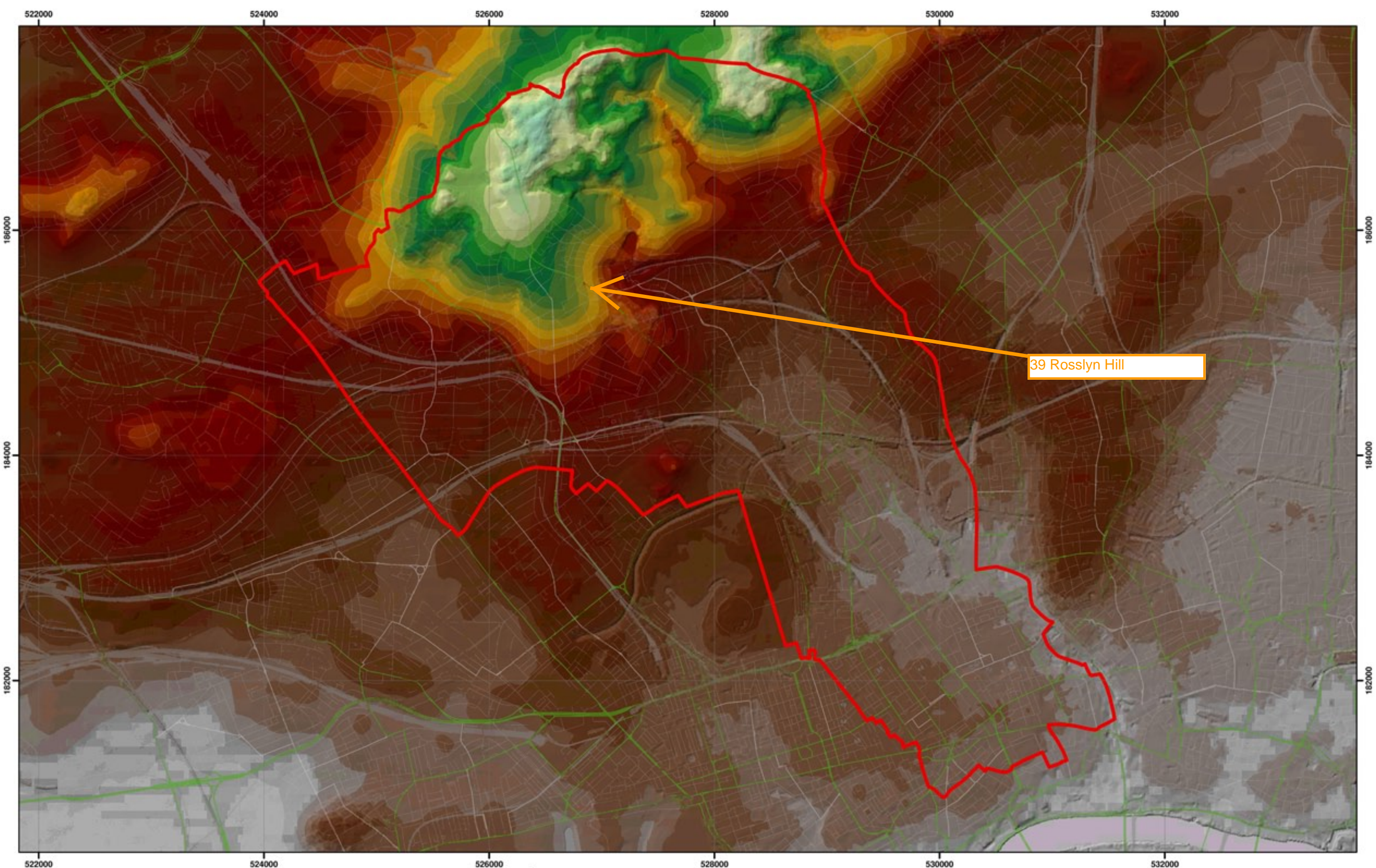
Borough of Camden	Aquifer Designation	Source Protection Zone
Railway Lines	Secondary A Aquifer	Outer Source Protection Zone
A Roads	Unproductive Strata	Inner Source Protection Zone

NB. Aquifer boundaries are indicative based on available geological mapping data

**Camden Geological, Hydrogeological
and Hydrological Study**
Camden Aquifer Designation Map

213923

FIGURE **8**



Topographic map based on digital terrain model provided by Camden Borough Council



Scale at A3: 1:30,000

Coordinate System:
British National Grid
GCS_OSGB_1936

0 0.375 0.75 1.5 2.25 3 3.75

Kilometers

Legend

- ▬ London Borough of Camden
- ▬ Railway Lines
- ▬ A Roads

DTM Terrain

* Window Size: 20,000

Elevation

- 145 - 150
- 140 - 145
- 135 - 140
- 130 - 135

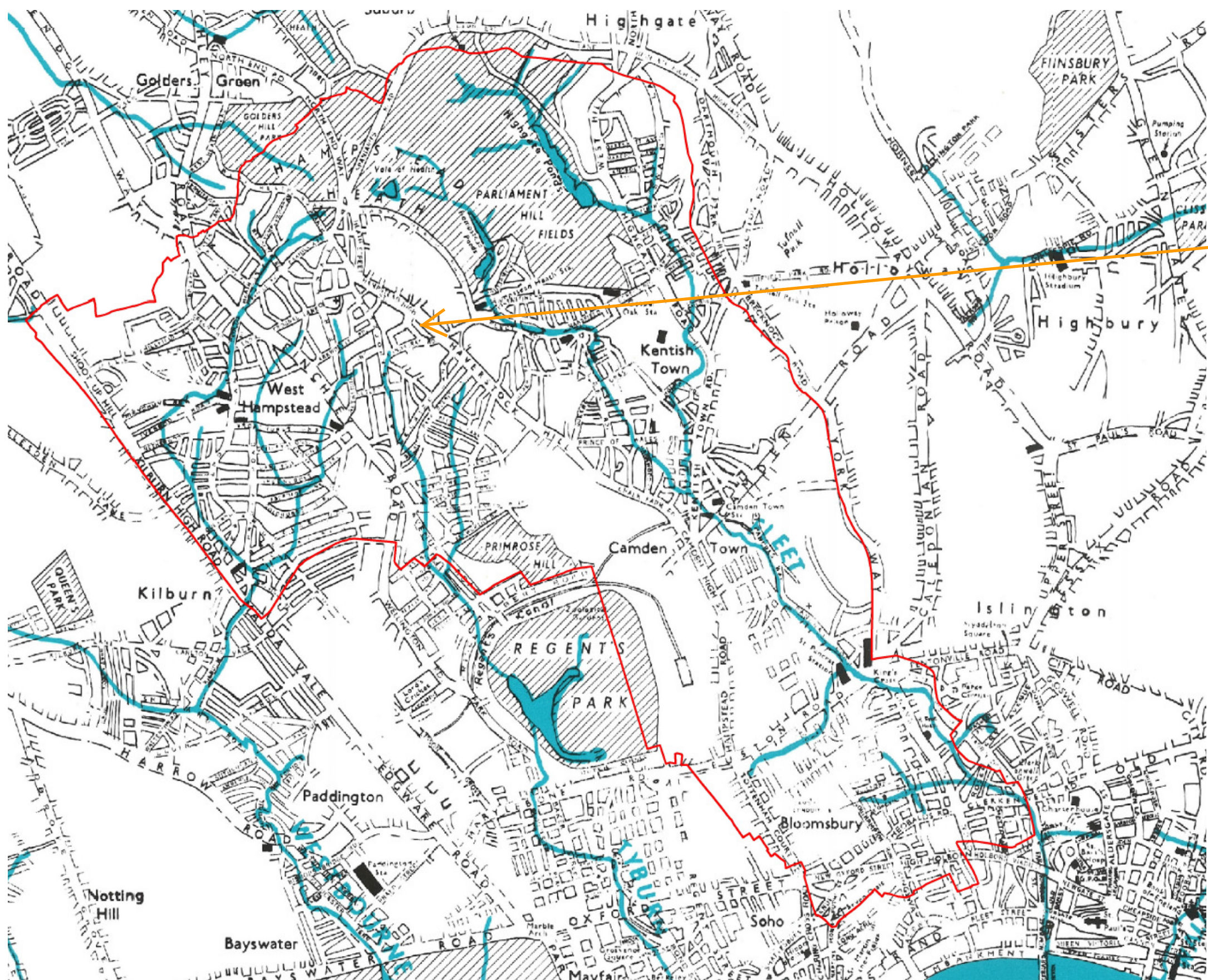
- | | | | |
|-----------|---------|---------|-----------|
| 125 - 130 | 90 - 95 | 55 - 60 | 20 - 25 |
| 120 - 125 | 85 - 90 | 50 - 55 | 15 - 20 |
| 115 - 120 | 80 - 85 | 45 - 50 | 10 - 15 |
| 110 - 115 | 75 - 80 | 40 - 45 | 5 - 10 |
| 105 - 110 | 70 - 75 | 35 - 40 | 0 - 5 |
| 100 - 105 | 65 - 70 | 30 - 35 | -5 - 0 |
| 95 - 100 | 60 - 65 | 25 - 30 | -7.4 - -5 |

**Camden Geological, Hydrogeological
and Hydrological Study**
Camden Topographic Map

213923

FIGURE

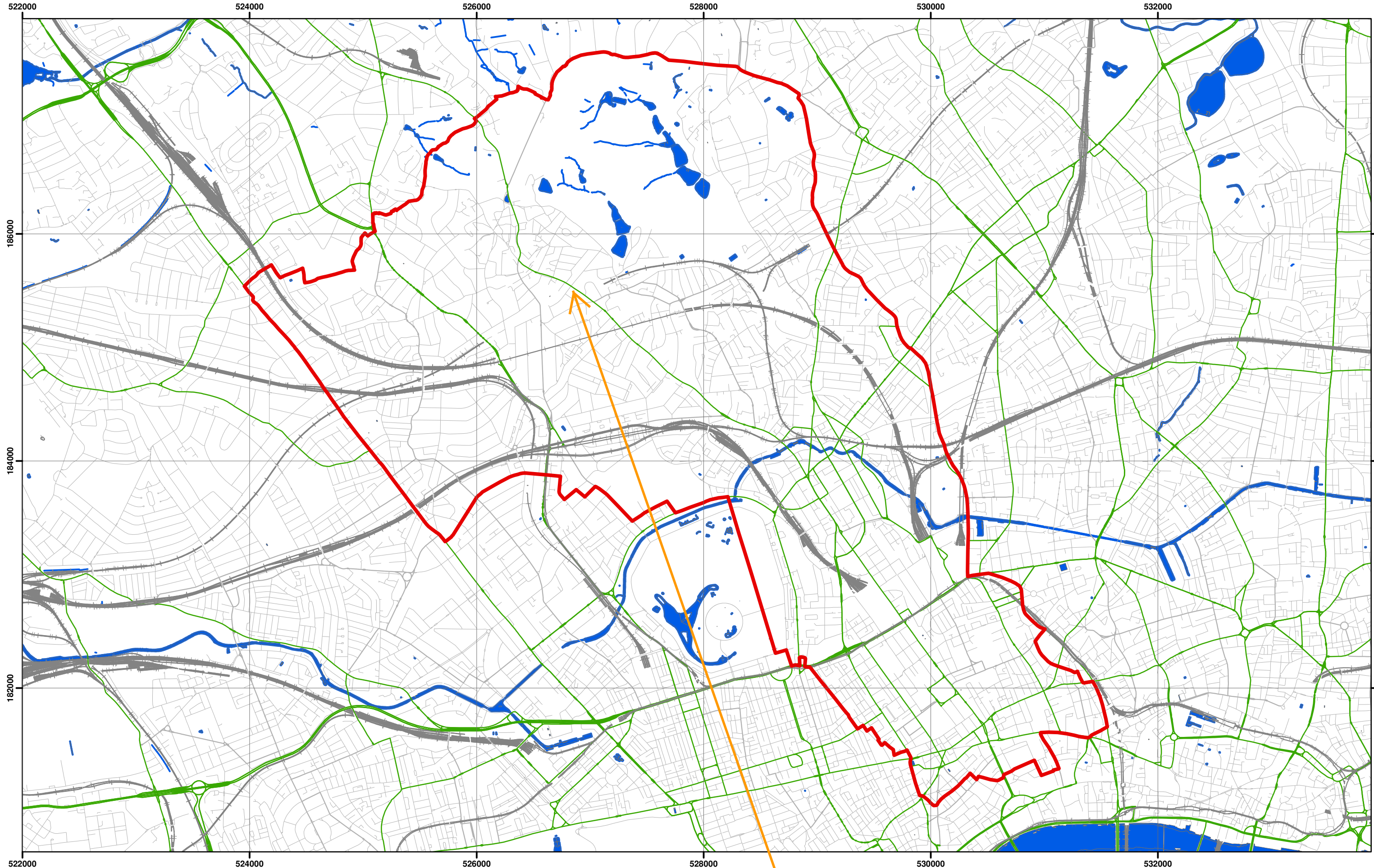
10



39 Rosslyn Hill

**Camden Geological, Hydrogeological
and Hydrological Study
Watercourses**

Source – Barton, Lost Rivers of London



Data Source: London Borough of Camden, 2010



Scale at A3: 1:30,000

Coordinate System:
British National Grid
GCS_OSGB_1936

Legend

- ▭ London Borough of Camden
- Surface water
- Railway Lines
- A Roads

39 Rosslyn Hill

Camden Geological, Hydrogeological and Hydrological Study

Camden Surface Water Features

213923

FIGURE

12

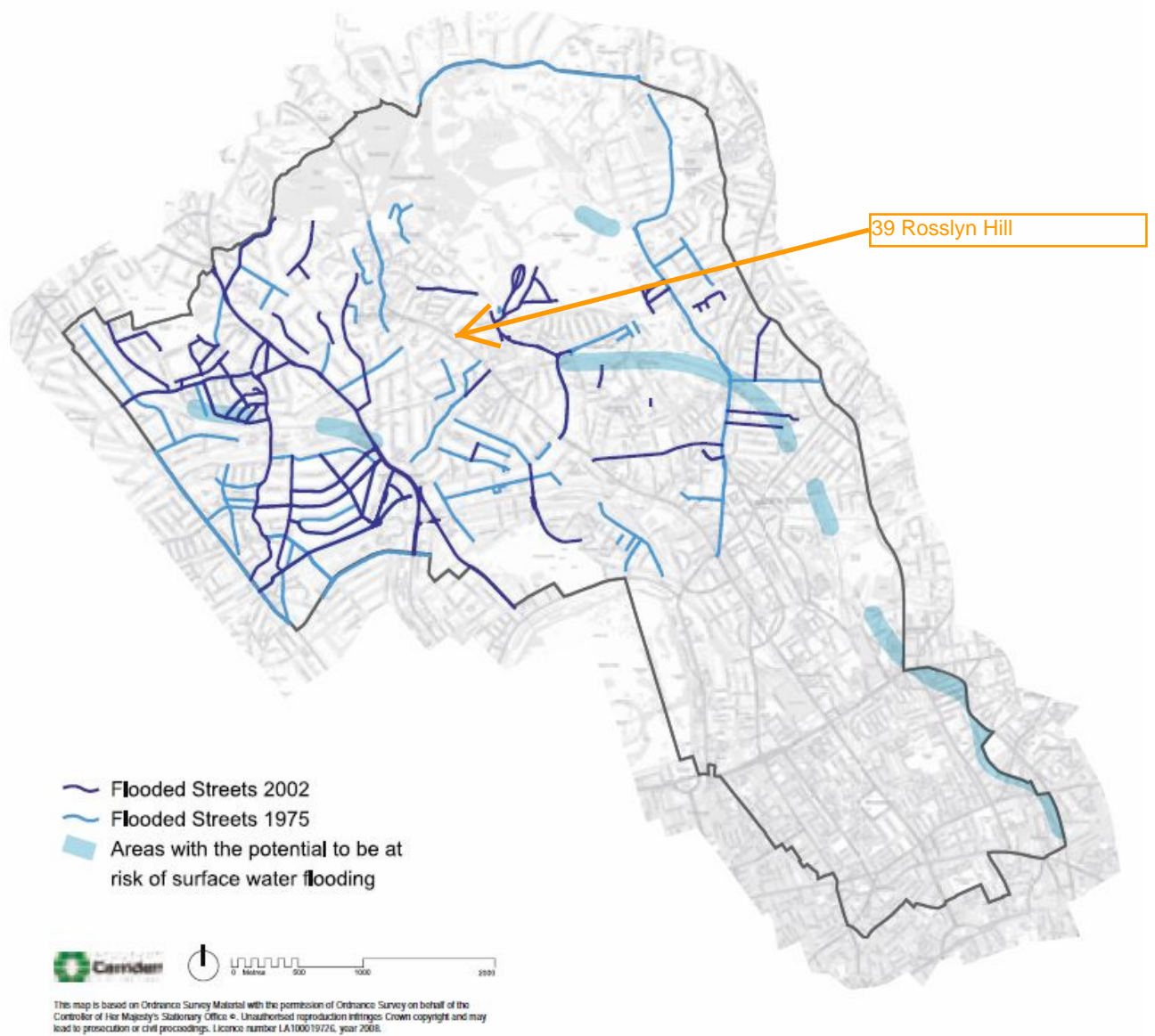
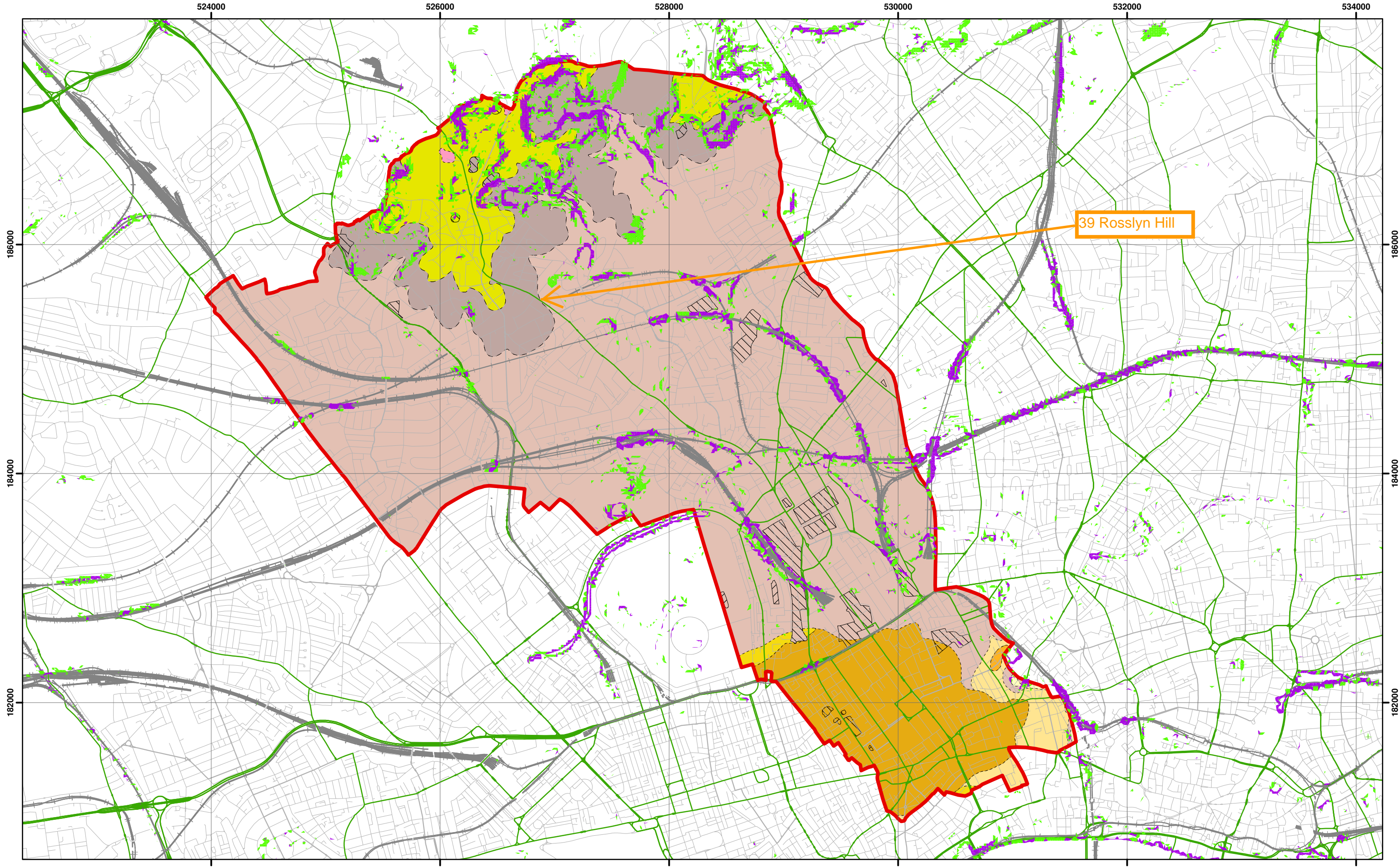


Figure 5 from Core Strategy, London Borough of Camden

Camden Geological, Hydrogeological and Hydrological Study Flood Map

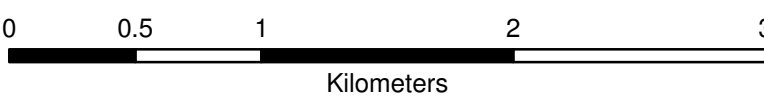


Slope Angles calculated from Digital Terrain Model Provided By Camden Borough Council



Scale at A3: 1:30,000

1:10,000 BGS Mapping
Coordinate System:
British National Grid
GCS_OSGB_1936



- Legend**
- | | | | | |
|--------------|--------------------------|-----------------------------|-----------------------------|-------------------------|
| Slope | London Borough of Camden | BGS 1:10K Artificial Ground | BGS 1:10K Drift Geology | BGS 1:10K Solid Geology |
| 0° - 7° | Railway Lines | MADE GROUND | ALLUVIUM | BAGSHOT FORMATION |
| 7° - 10° | A Roads | WORKED GROUND | HACKNEY GRAVEL FORMATION | CLAYGATE MEMBER |
| > 10° | | | LANGLEY SILT FORMATION | LAMBETH GROUP |
| | | | LYNCH HILL GRAVEL FORMATION | LONDON CLAY FORMATION |
| | | | STANMORE GRAVEL FORMATION | |

NB. Geological boundaries are largely indicative based on available geological mapping data

Camden Geological, Hydrogeological and Hydrological Study

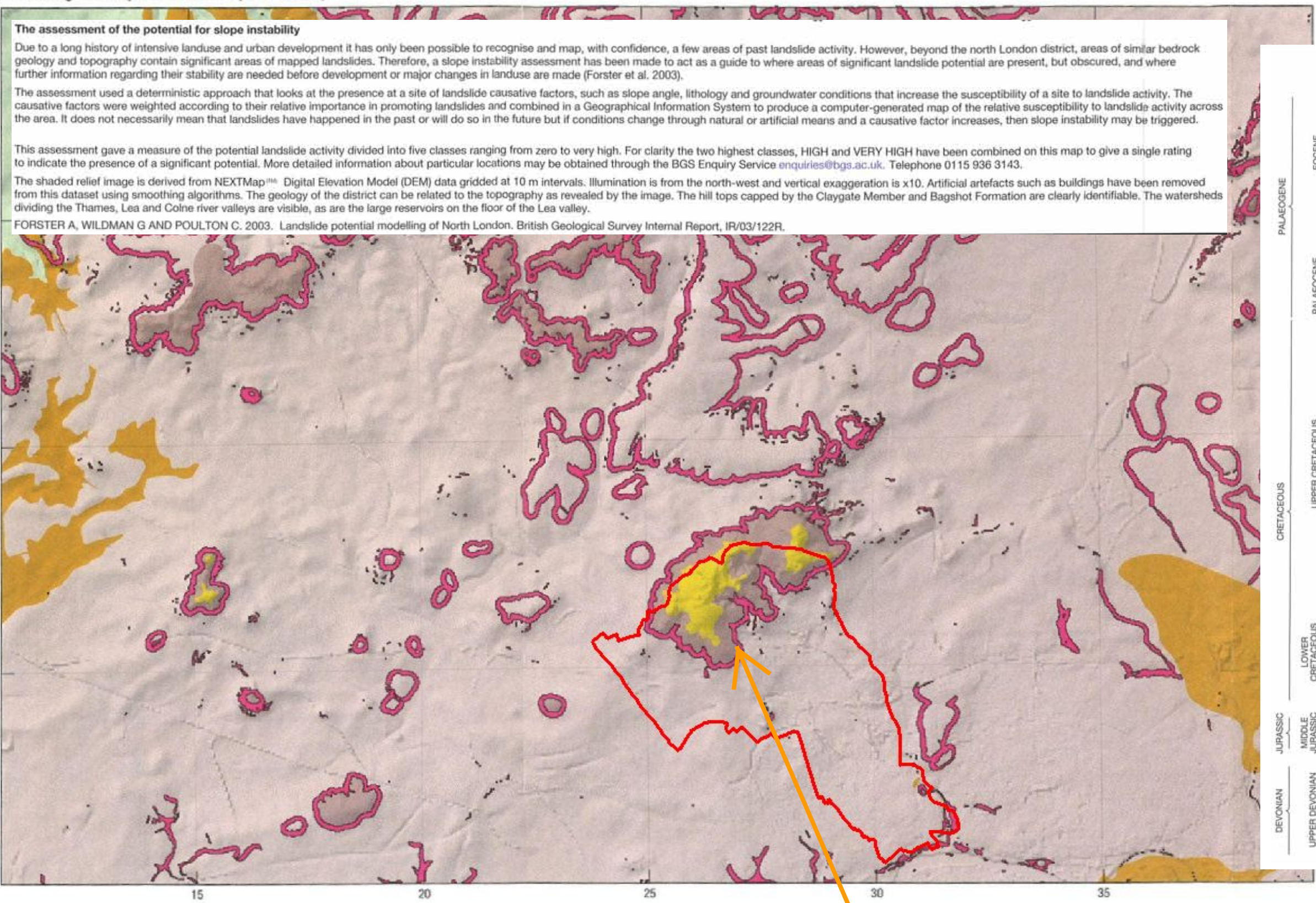
Slope Angle Map

213923

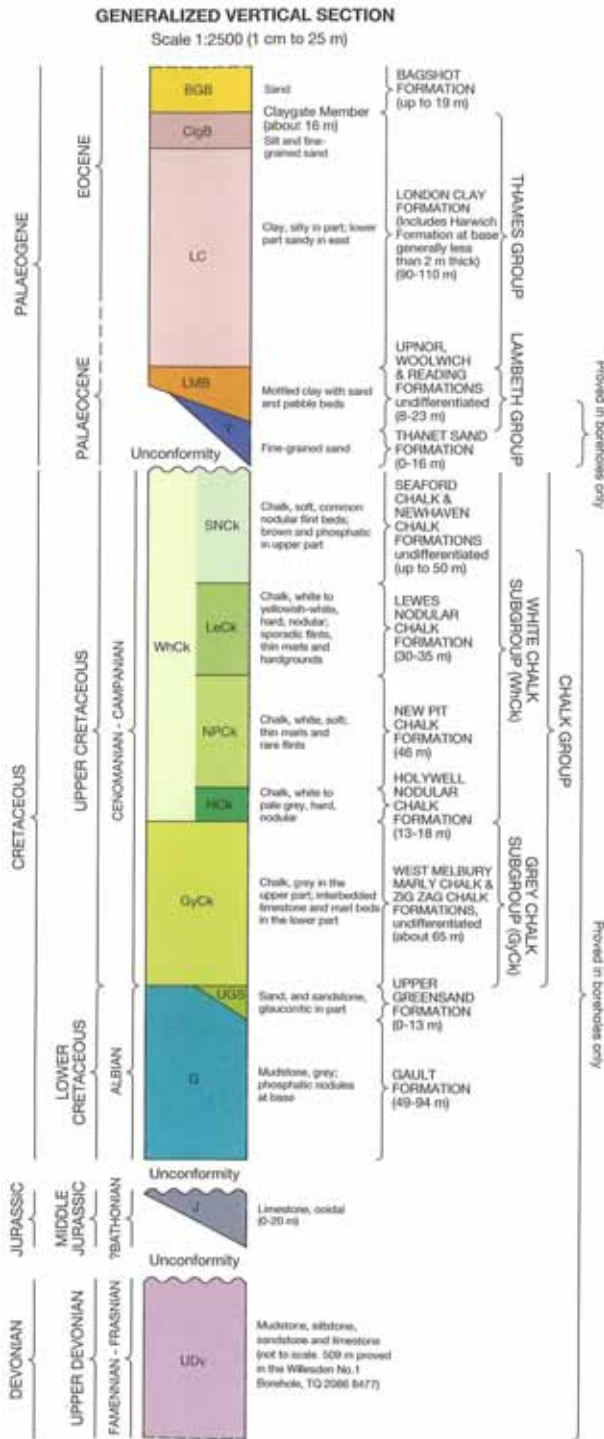
FIGURE

16

Areas of greatest potential for slope instability



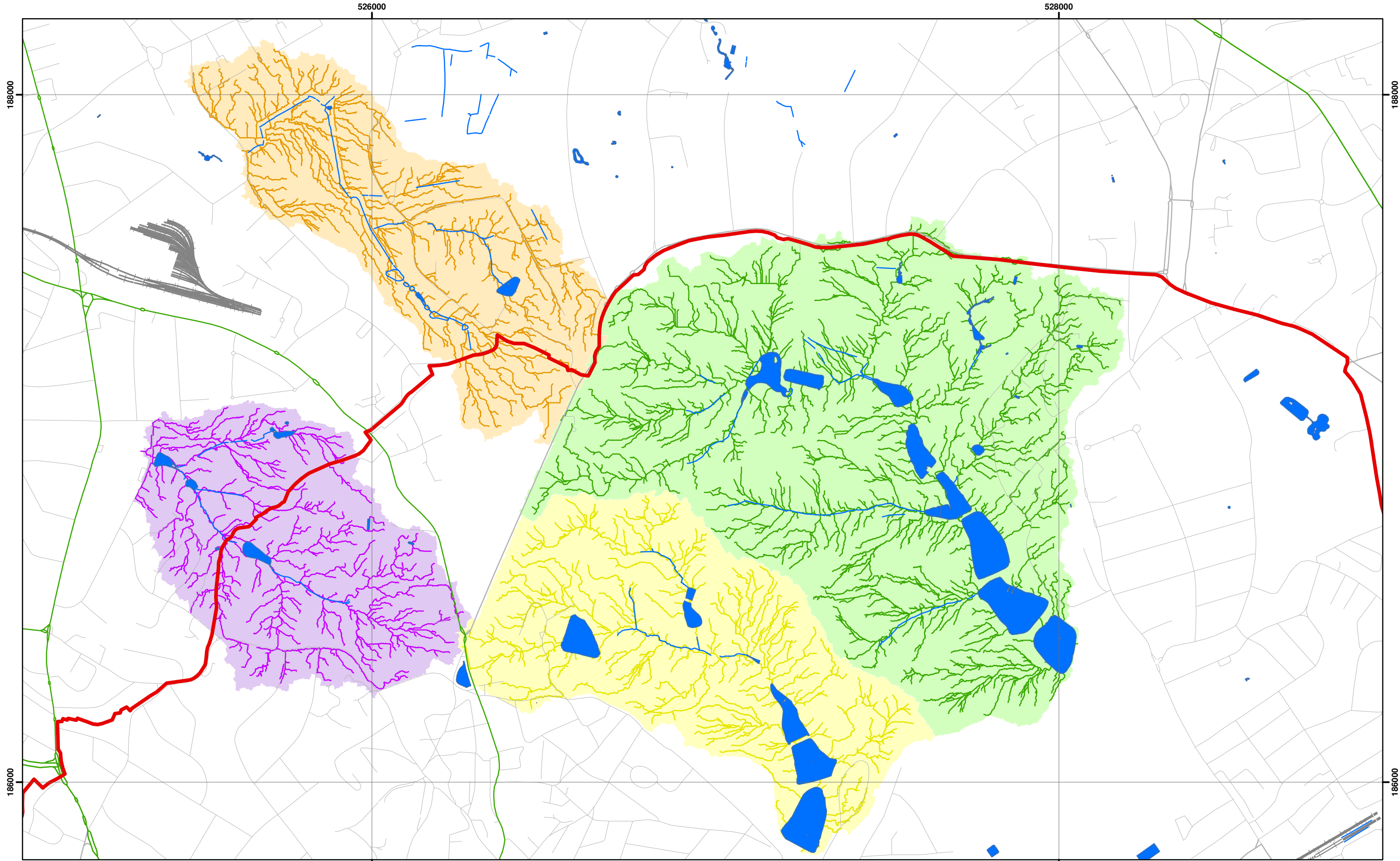
Areas of significant landslide potential



Source - British Geological Society, 1:50,000 Series
England and Wales Sheet 256 – North London

39 Rosslyn Hill

Camden Geological, Hydrogeological
and Hydrological Study
Areas of landslide potential



Catchments and Drainage after Haycock, 2010



Scale at A3: 1:10,000

Coordinate System:
British National Grid
GCS_OSGB_1936

Legend

- London Borough of Camden
- Surface Water
- Railway Lines
- A Roads
- Highgate Chain Catchment
- Golders Hill Chain Catchment
- Hampstead Chain Catchment
- Hampstead Heath Extension Chain Catchment

Camden Geological, Hydrogeological and Hydrological Study

Hampstead Heath Surface Water
Catchments and Drainage

213923

FIGURE **14**

