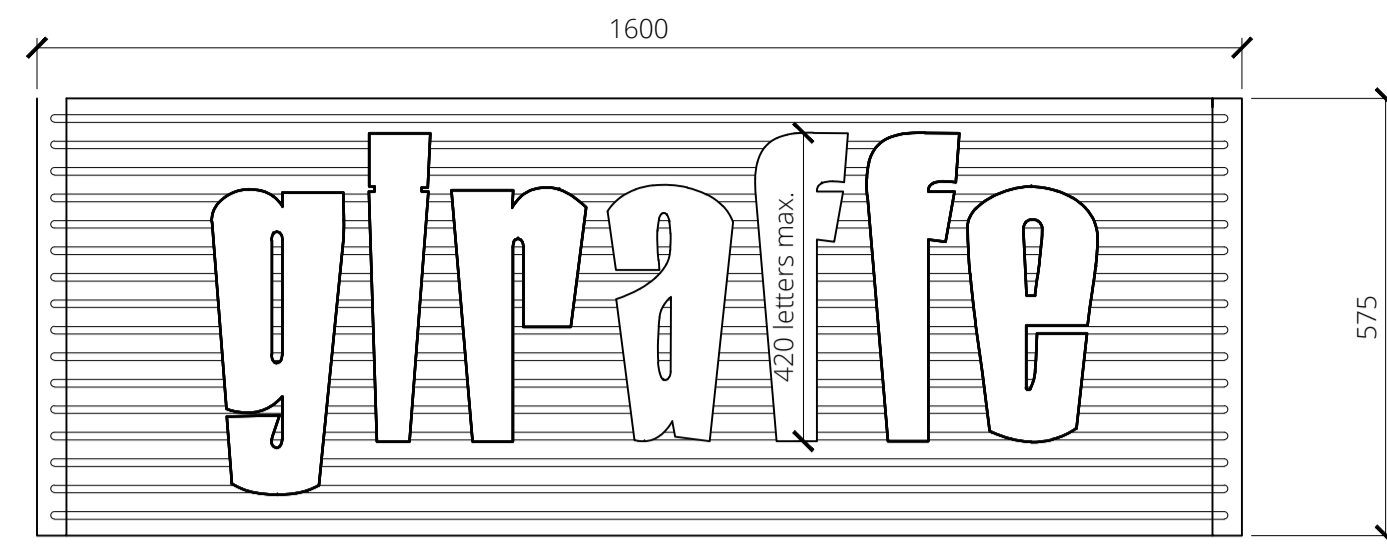
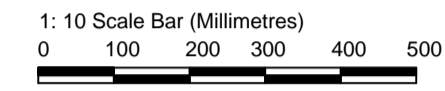


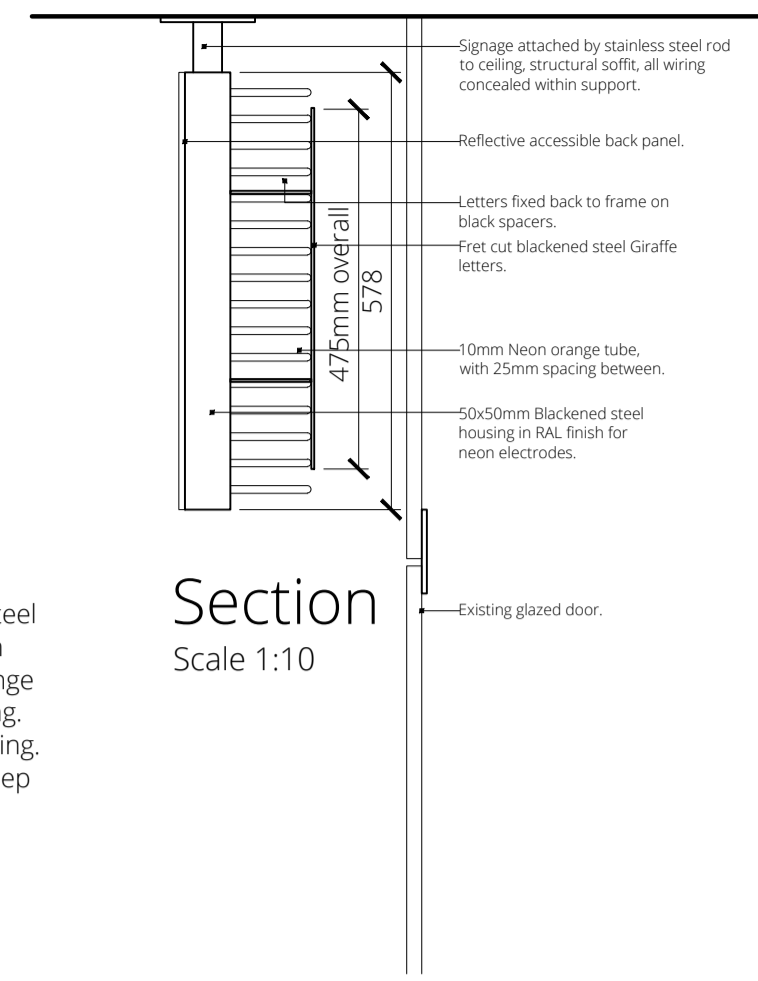
revisions			
rev	by	date	comment
A	AG	16.11.15	Projecting sign revised to conform to approved Landlord details



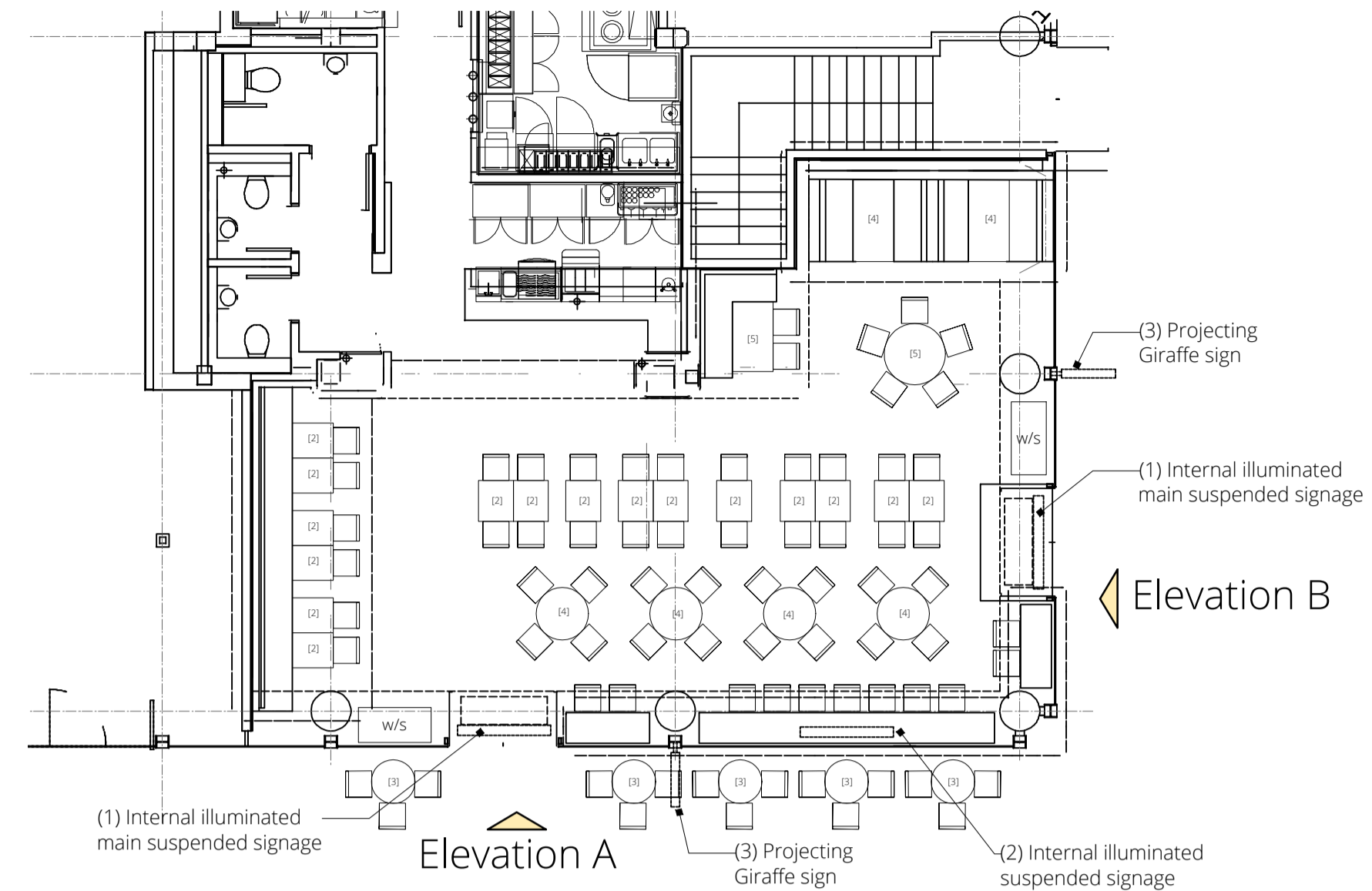
Main Signage Design
(As viewed from shopfrontage without glazing)
Scale 1:10



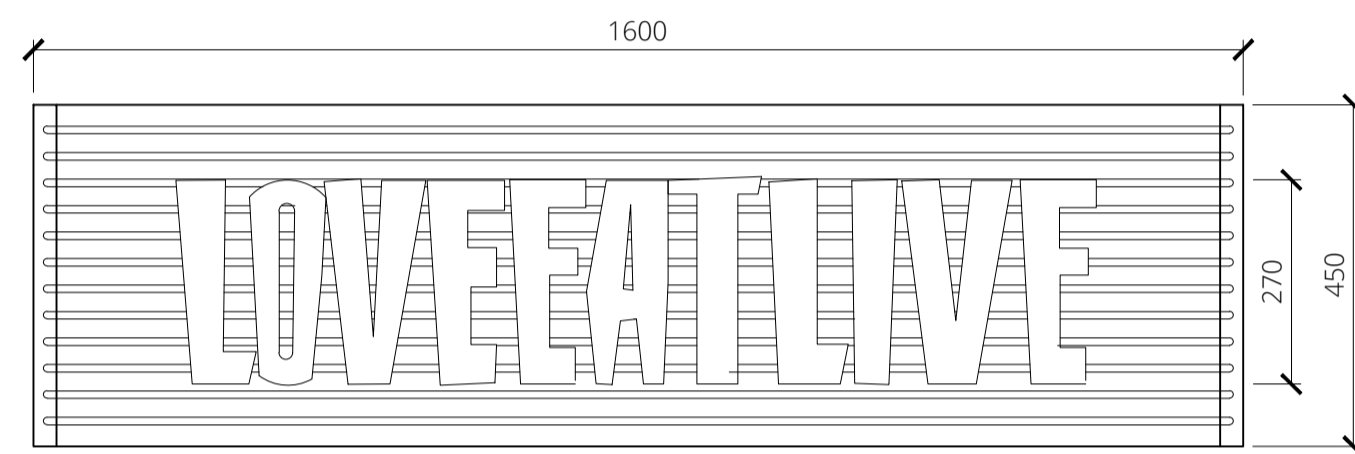
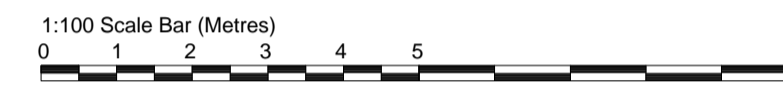
1 Main Fascia Signage - Current suspended signage band removed. Fret cut blackened steel Giraffe letters, fixed back to a 50mm x 50mm blackened mild steel frame with banded orange neon tubes @ 37m/a situated behind lettering. Sign to be suspended internally from the ceiling. Over all size 1600mm x 575mm x 150mm deep



Section
Scale 1:10

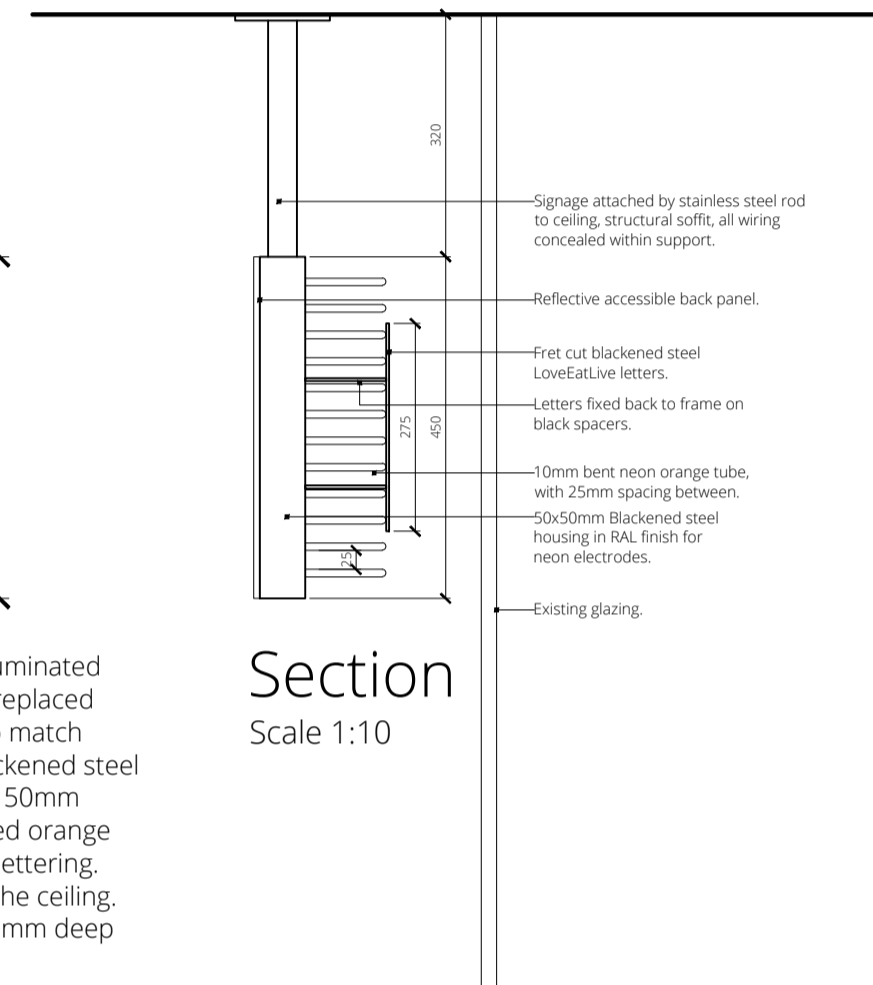


Layout Plan
Scale 1:100

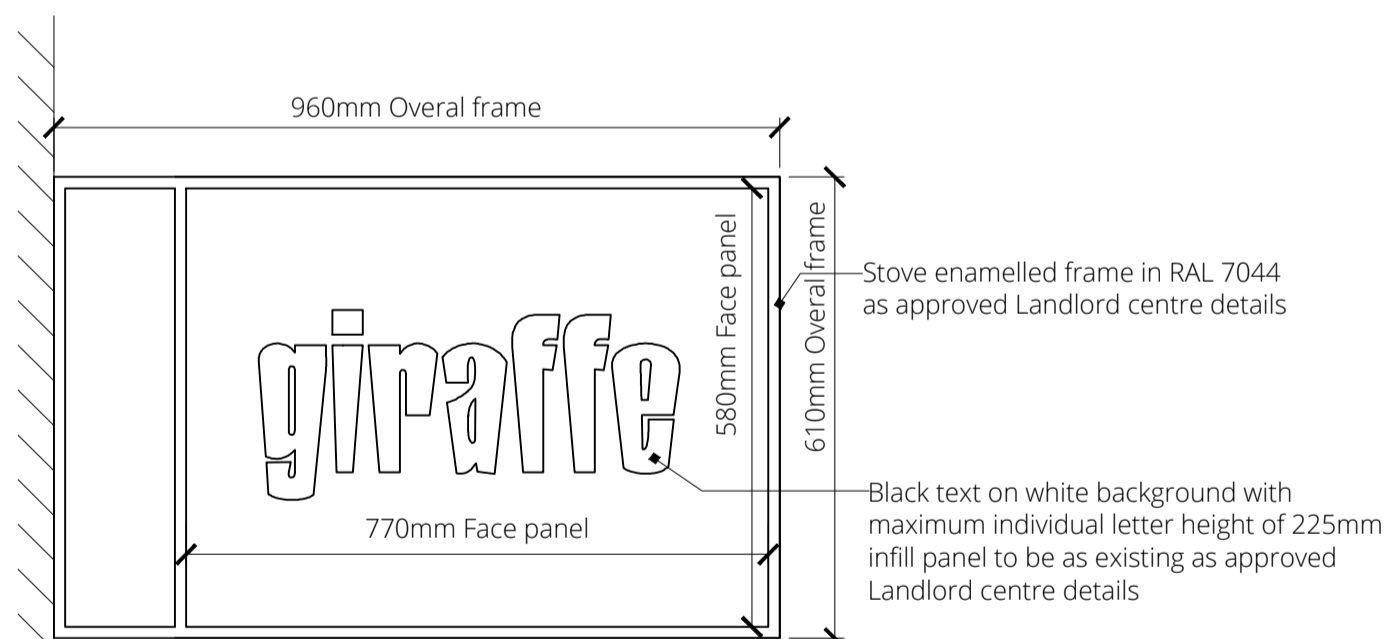


Secondary Signage Design
(As viewed from shopfrontage without glazing)
Scale 1:10

2 Secondary Fascia Signage - Existing illuminated Giraffe signage to be removed. To be replaced with secondary LoveEatLive signage to match main signage above door. Fret cut blackened steel Giraffe letters, fixed back to a 50mm x 50mm blackened mild steel frame with banded orange neon tubes @ 37m/a situated behind lettering. Sign to be suspended internally from the ceiling. Over all size 1600mm x 450mm x 150mm deep

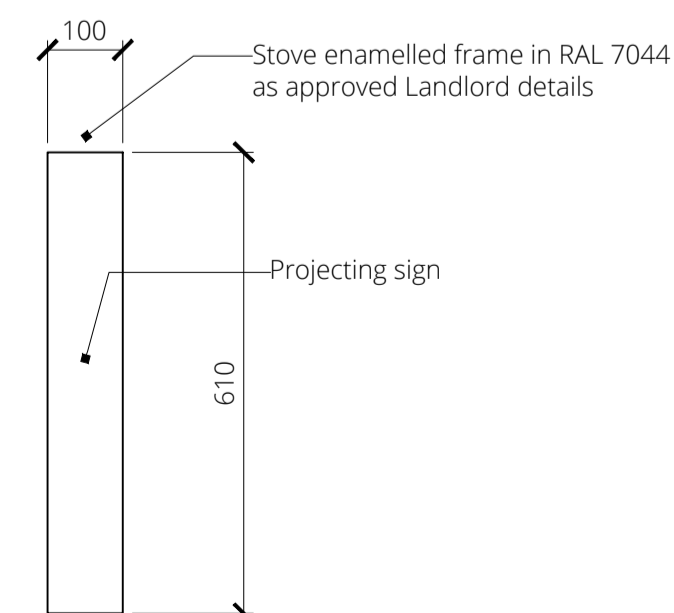


Section
Scale 1:10

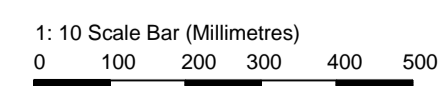


Projecting Signage Elevation
Scale 1:10

3



Projecting Signage End View
Scale 1:10



harrison
REALISING CREATIVE ENVIRONMENTS

LONDON: 39 Margaret Street, London W1G 0JQ
Call +44 (0)20 7493 6397

BIRMINGHAM: 15 Coleshill Street, Sutton Coldfield,
Birmingham B72 1SD
Call +44 (0)121 321 3030

info@harrison.hn www.harrison.hn

client

Giraffe

project

Brunswick Centre
London

title

Proposed Drawing
Signage Details

drawn

VM

check HES

scale

@ A1 As stated

date August 15

project/dwg no.

3430/06/A