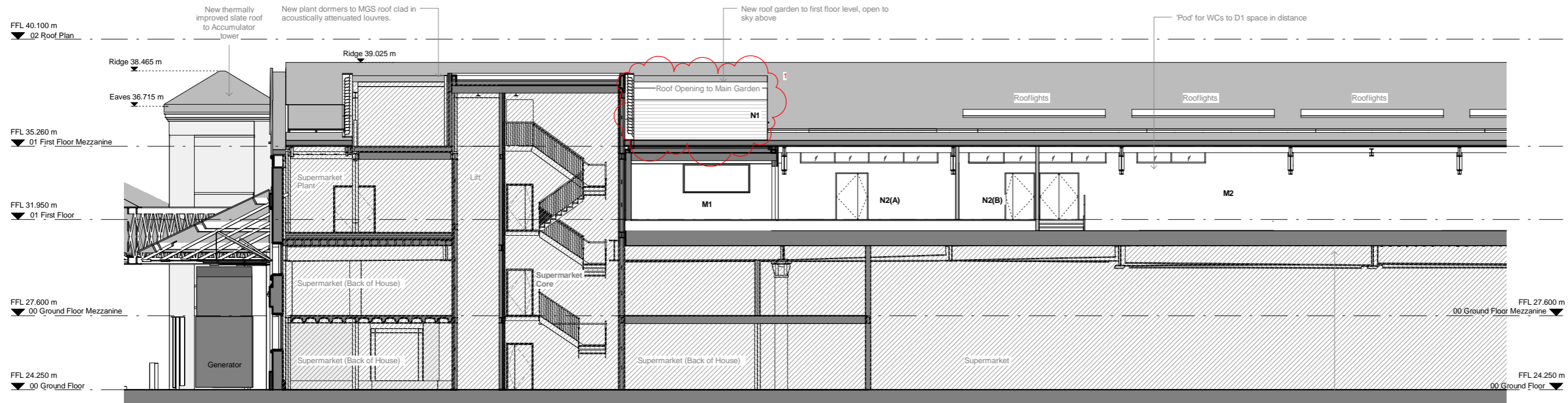
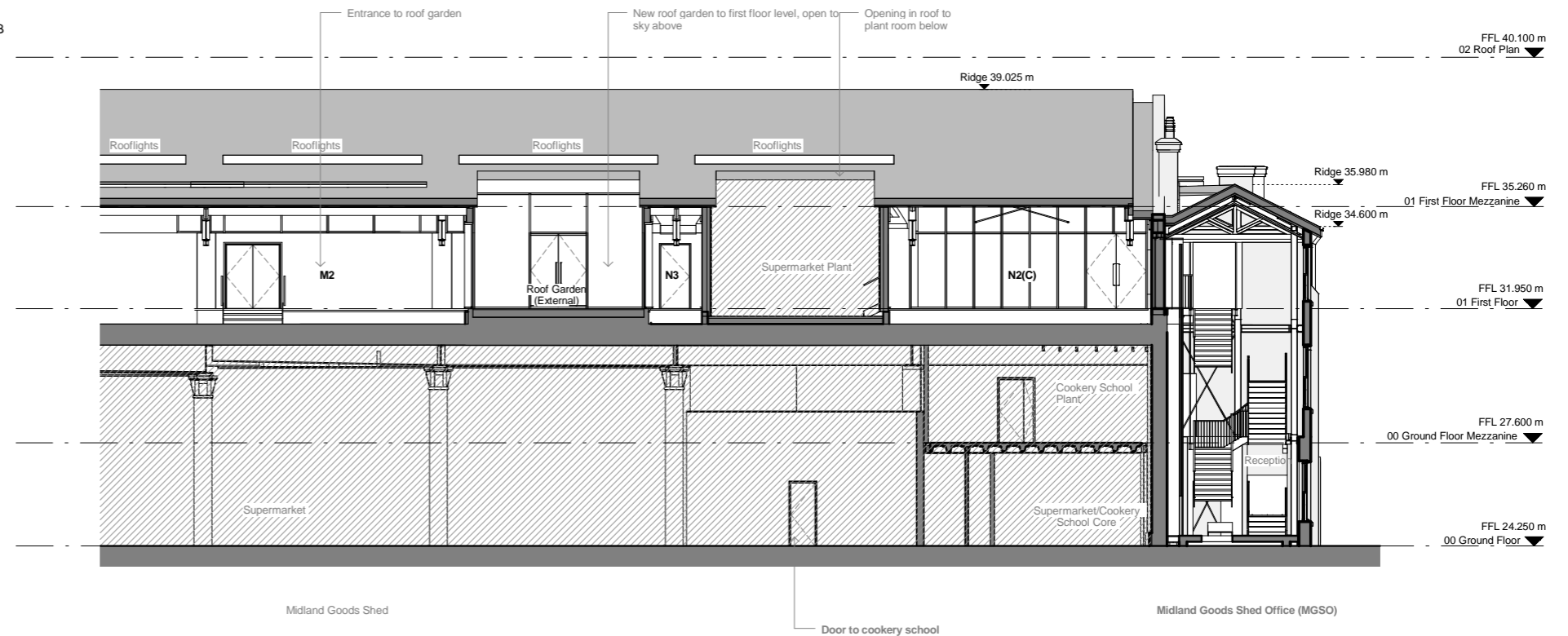


Section KK Tile A



Section KK Tile B



FIT-OUT DRAWING LEGEND:

Please note - for clarity, notes on the drawing are as-previously approved, and new notes & information are detailed below:

M1. Main equipment (comms) room located beneath roof terrace
M2. Plant space extended to accommodate fit-out equipment
N1. 5 no. condensers located on roof garden terrace with acoustic and visual screens to mitigate sound impact and protect views from WHC & lower level of roof garden.
N2. Clerestory glazing to facilitate programming spaces along east and west walls:
A. Main equipment (comms) room
B. Storage
C. Storage & admin
N3. Storage space serving seminar room

Revisions	By	Chk	Revisions	By	Chk	Notes
1. 150803			Draft for Information	MH	EM	
A. 150807			Draft for Information	MH	EM	
B. 150825			For Approval	CH	EM	
C. 150827			For Approval	CH	EM	
D. 151104			For Approval	CH	KC	
E. 151111			For Approval	CH	KC	
F. 151116			For Approval	KC	EM	

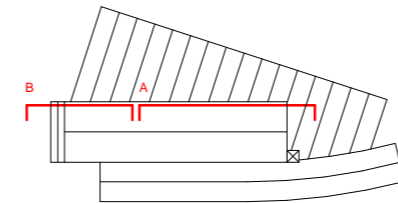
Notes

1. These proposals relate only to the parts of the building and canopy to be occupied initially by Guardian News & Media; they do not relate to those hatched areas to be occupied initially by Waitrose pursuant to Reserved Matters approval reference 2014/1433P and Listed Building Consent reference 2014/1436L.

2. Drawing to be read in conjunction with 0613_P_241 and 1314_PC_241

REVISION F

1. Acoustic screen reduced in height to match drawing 1314_P_235



Bennetts Associates Architects

1 Rawstone Place London EC1V 7NL
T +44 (0) 20 7520 3300 F +44 (0) 20 7520 3333
E mail@bennettsassociates.com

For Bennetts Associates' electronic information issue disclaimer -
www.bennettsassociates.com/information/disclaimer/

Scale 1:250

Project
Guardian Space
Guardian News & Media

Project No. 1314

Drawing Title
For Approval
Section KK Looking East
Proposed

Drawing Number
1314_P_241

Revision
F

Scale @ A3
1:200

Scale @ A1
1:100

Revision Date
151116

YY MM DD