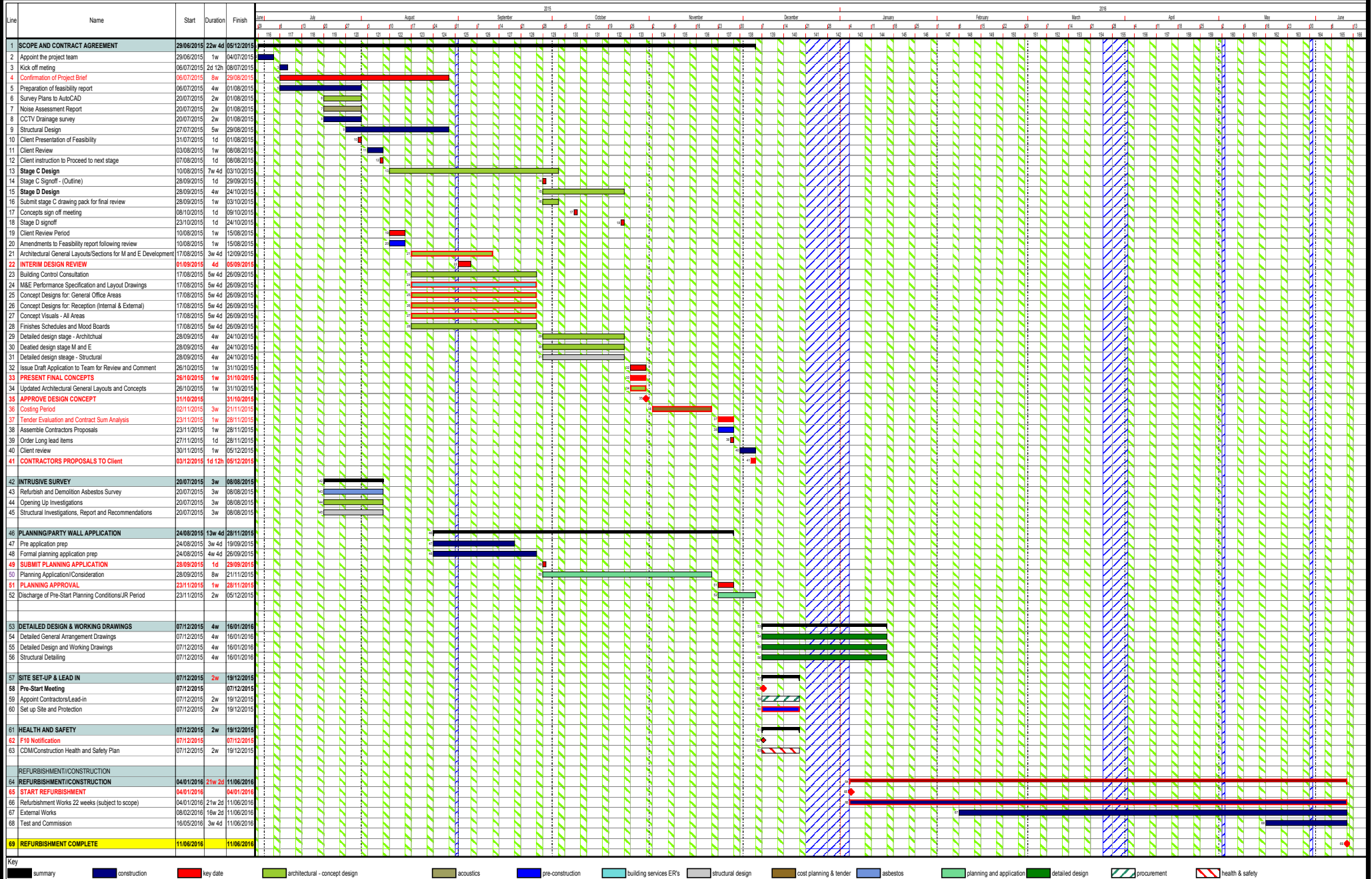


Columbia Threadneedle Investments

Saffron House, 6-10 Kirby Street, London, EC1N 8TS

25/09/2015



Key: summary, construction, key date, architectural - concept design, acoustics, pre-construction, building services ER's, structural design, cost planning & tender, asbestos, planning and application, detailed design, procurement, health & safety

Drawn by: Colin Allan | Dwg No. MA1234 | Revision No. v.5 | Notes: 63 Kew Road - pre-contract programme