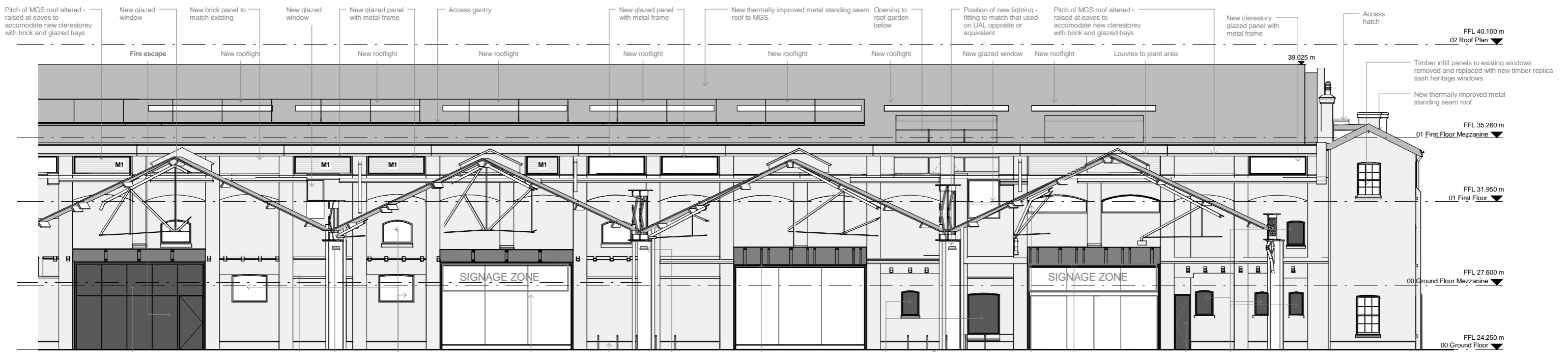
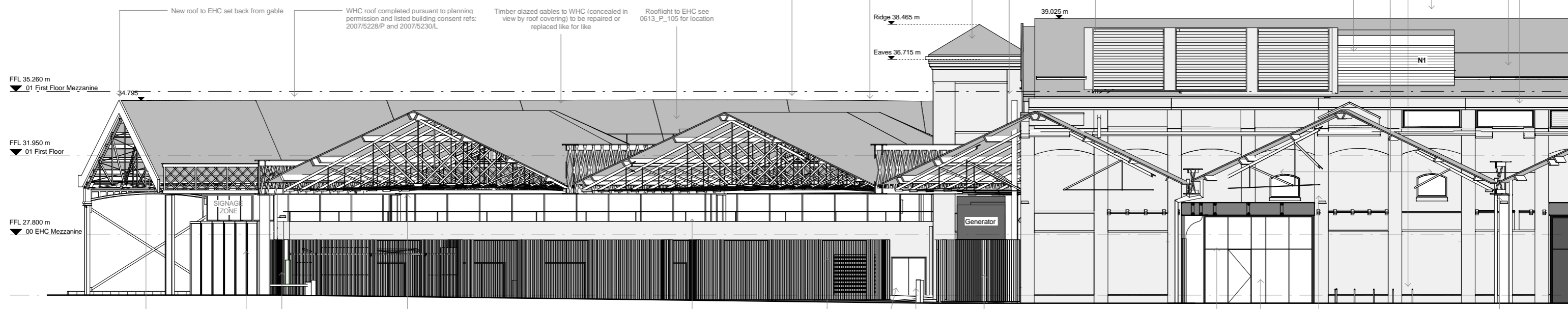


**FIT-OUT DRAWING LEGEND:**  
 Please note - for clarity, notes on the drawing are as-previously approved, and new notes & information are detailed below:  
 M1. Louvres in lieu of clerestory panels  
 N1. 5 no. condensers located on roof garden terrace with acoustic and visual screens to mitigate sound impact and protect views from WHC & lower level of roof garden.



Painted steel insert with painted steel reveals to existing opening  
 Existing brickwork lightly cleaned down, repaired and refurbished to reveal original brick colour and detail  
 Position of new lighting - fitting to match that used on UAL opposite or equivalent  
 Glazed insert to black painted steel reveals  
 Clear glazed infill with black painted steel portal frame reveals and fire curtain to existing opening allowing visibility into supermarket.  
 Position of new lighting - fitting to match that used on UAL opposite or equivalent  
 Black painted steel portal frame reveal to opening with glazed infill  
 Black painted steel infill panel to window frame in retained openings  
 Louvred panel to new openings in existing brick indent panels  
 Black painted steel portal frame reveal to opening with glazed infill and sliding glazed doors  
 Black painted steel door to enlarged opening  
 Black painted steel infill panel to window frame in retained openings  
 New cycle racks

West Elevation Tile B  
 FFL 40.100 m  
 02 Roof Plan  
 Flues extend above WHC  
 WHC roof completed pursuant to planning permission and listed building consent refs: 2007/5228/P and 2007/5230/L  
 New thermally improved metal standing seam roof to Accumulator tower  
 Generator flue extends above WHC  
 New plant dormers to MGS roof clad in acoustically attenuated louvres and open to the sky (50% free area to plant areas).  
 New roof garden to first floor level, open to sky above with terrace at mezzanine level see 0613\_P\_104  
 New glazed windows  
 Access gantry  
 New cycle racks  
 New glazed clerestory panels



New timber gable to match existing South gable  
 New protruding steel portal frames with glazed entrance and opaque spandrel panels to EHC North facade  
 New intercom and signage structure  
 New glazing at upper levels with metal rainscreen cladding below  
 Metal rainscreen cladding to maintenance access balcony  
 Louvred screen visible behind service enclosure see 0613\_P\_421 for bay study view of elements behind service enclosure screen  
 Ramp up to plant access see P. 422 for details  
 Bollard  
 Painted steel fencing screen to supermarket yard  
 Painted steel insert with painted steel reveals to existing opening  
 Access to back of house area  
 Position of new lighting - fitting to match that used on UAL opposite or similar

Revisions	By	Chk	Revisions	By	Chk
1. 150803 Draft for Information	MH	EM			
A 150807 Draft for Information	MH	EM			
B 150825 For Approval	CH	EM			
C 150827 For Approval	CH	EM			
D 151104 For Approval	CH	KC			
E 151111 For Approval	CH	KC			

**Notes**  
 1. These proposals relate only to the parts of the building and canopy to be occupied initially by Guardian News & Media; they do not relate to those areas to be occupied initially by Watrose pursuant to Reserved Matters approval reference 2014/1433/P and Listed Building Consent reference 2014/1436/L.  
 2. Drawing to be read in conjunction with 0613\_P\_302 and 1314\_PC\_302

**Bennetts Associates Architects**  
 1 Rawstone Place London EC1V 7NL  
 T +44 (0) 20 7520 3300 F +44 (0) 20 7520 3333  
 E mail@bennettsassociates.com  
 For Bennetts Associates' electronic information issue disclaimer - see bennettsassociates.com/informationanddisclosure/

**Project**  
 Guardian Space  
 Guardian News & Media

**Drawing Title**  
 For Approval  
 West Elevation  
 Proposed

**Drawing Number**  
 1314\_P\_302

**Revision**  
 E

**Scale @ A3**  
 1:200

**Scale @ A1**  
 1:100

**Revision Date**  
 151111

**Project No.** 1314

**Scale 1:100**