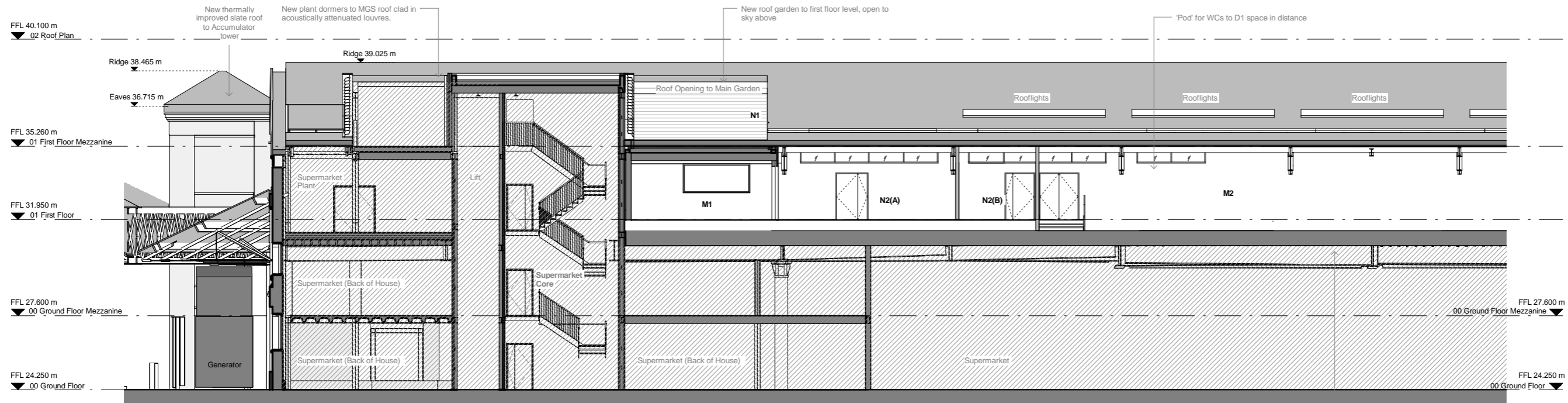
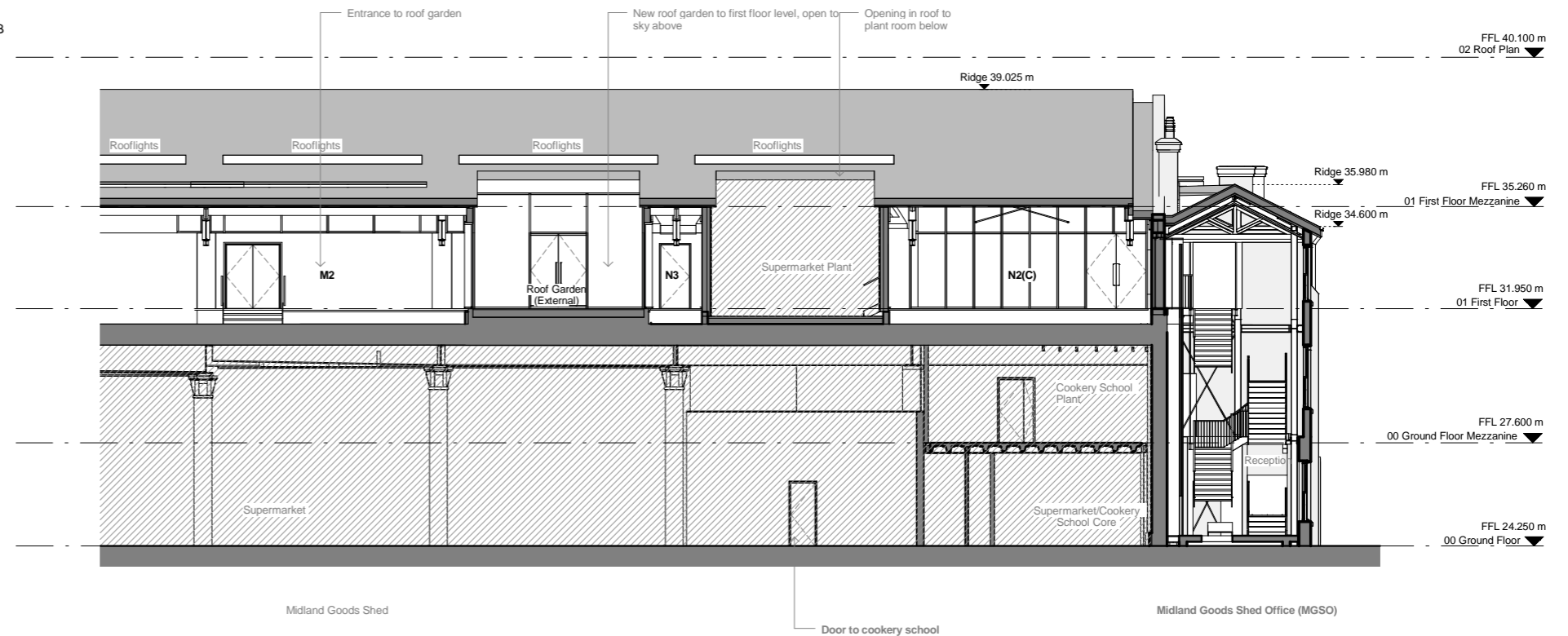


Section KK Tile A



Section KK Tile B



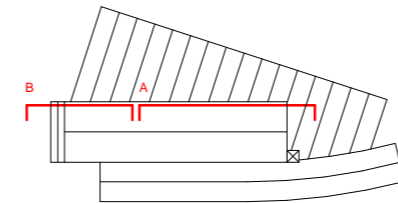
FIT-OUT DRAWING LEGEND:

Please note - for clarity, notes on the drawing are as-previously approved, and new notes & information are detailed below:

M1. Main equipment (comms) room located beneath roof terrace
M2. Plant space extended to accommodate fit-out equipment
N1. 5 no. condensers located on roof garden terrace with acoustic and visual screens to mitigate sound impact and protect views from WHC & lower level of roof garden.
N2. Clerestory glazing to facilitate programming spaces along east and west walls:
A. Main equipment (comms) room
B. Storage
C. Storage & admin
N3. Storage space serving seminar room

Revisions	By	Chk	Revisions	By	Chk	Notes
1. 150803			Draft for Information	MH	EM	
A 150807			Draft for Information	MH	EM	
B 150825			For Approval	CH	EM	
C 150827			For Approval	CH	EM	
D 151104			For Approval	CH	KC	
E 151111			For Approval	CH	KC	

1. These proposals relate only to the parts of the building and canopy to be occupied initially by Guardian News & Media; they do not relate to those hatched areas to be occupied initially by Waitrose pursuant to Reserved Matters approval reference 2014/1433P and Listed Building Consent reference 2014/1436L.
2. Drawing to be read in conjunction with 0613_P_241 and 1314_PC_241



Bennetts Associates Architects
1 Rawstone Place London EC1V 7NL
T +44 (0) 20 7520 3300 F +44 (0) 20 7520 3333
E mail@bennettsassociates.com
For Bennetts Associates' electronic information issue disclaimer - www.bennettsassociates.com/information/disclaimer/

Scale 1:250

Project
Guardian Space
Guardian News & Media

Drawing Title
For Approval
Section KK Looking East
Proposed

Drawing Number
1314_P_241

Scale @ A3
1 : 200

Scale @ A1
1 : 100

Project No. 1314

Revision
E

Revision Date
151111

YY MM DD