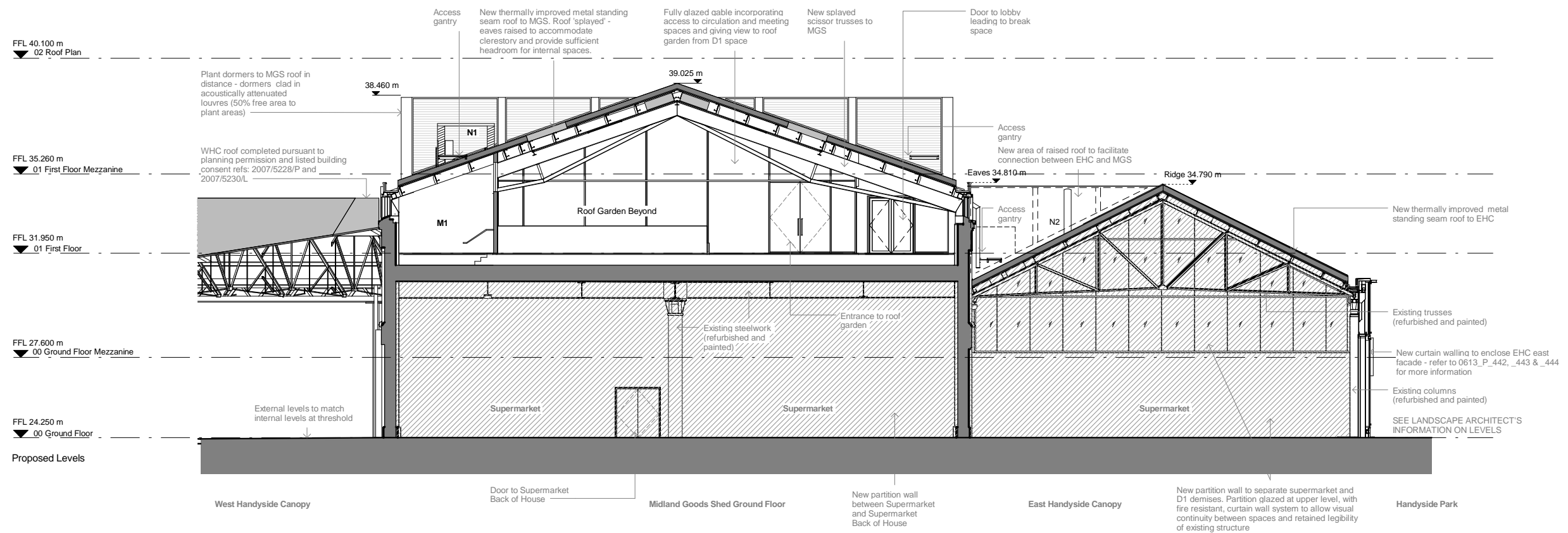


**FIT-OUT DRAWING LEGEND:**

Please note - for clarity, notes on the drawing are as-previously approved, and new notes & information are detailed below:

M1. Plant space extended to accommodate fit-out equipment  
 N1. 5 no. condensers located on roof garden terrace with acoustic and visual screens to mitigate sound impact and protect views from WHC & lower level of roof garden.  
 N2. Kitchen extract (conical accelerator)



Revisions	By	Chk	Revisions	By	Chk
1. 150803 Draft for Information	MH	EM			
A 150807 Draft for Information	MH	EM			
B 150825 For Approval	CH	EM			
C 150827 For Approval	CH	EM			
D 151104 For Approval	CH	KC			
E 151111 For Approval	CH	KC			

**Notes**

1. These proposals relate only to the parts of the building and canopy to be occupied initially by Guardian News & Media; they do not relate to those hatched areas to be occupied initially by Waitrose pursuant to Reserved Matters approval reference 2014/1433P and Listed Building Consent reference 2014/1436L.

2. Drawing to be read in conjunction with 0613\_P\_234 and 1314\_PC\_234

**Bennetts Associates Architects**

1 Rawstone Place London EC1V 7NL  
 T +44 (0) 20 7520 3300 F +44 (0) 20 7520 3333  
 E mail@bennettsassociates.com

Project: **Guardian Space**  
 Guardian News & Media

Drawing Title: **Section HH Looking North Proposed**

Drawing Number: **1314\_P\_234**

Scale @ A3: 1:200  
 Scale @ A1: 1:100

Revision: **E**

Revision Date: **151111**

Project No. **1314**

YY MM DD

