

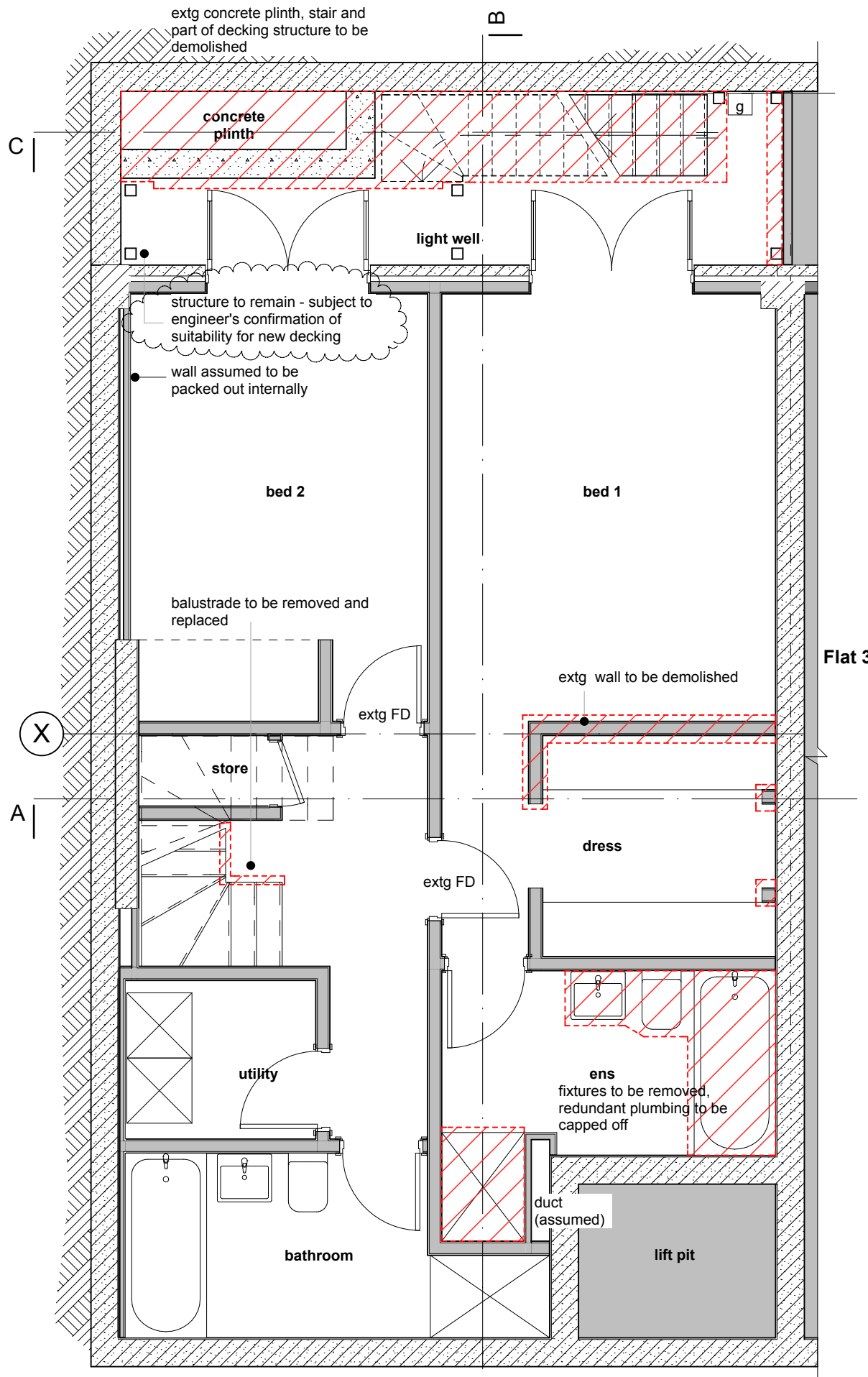
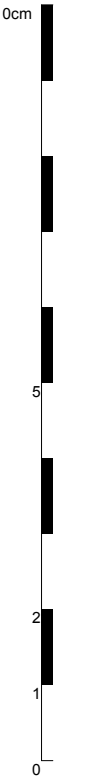


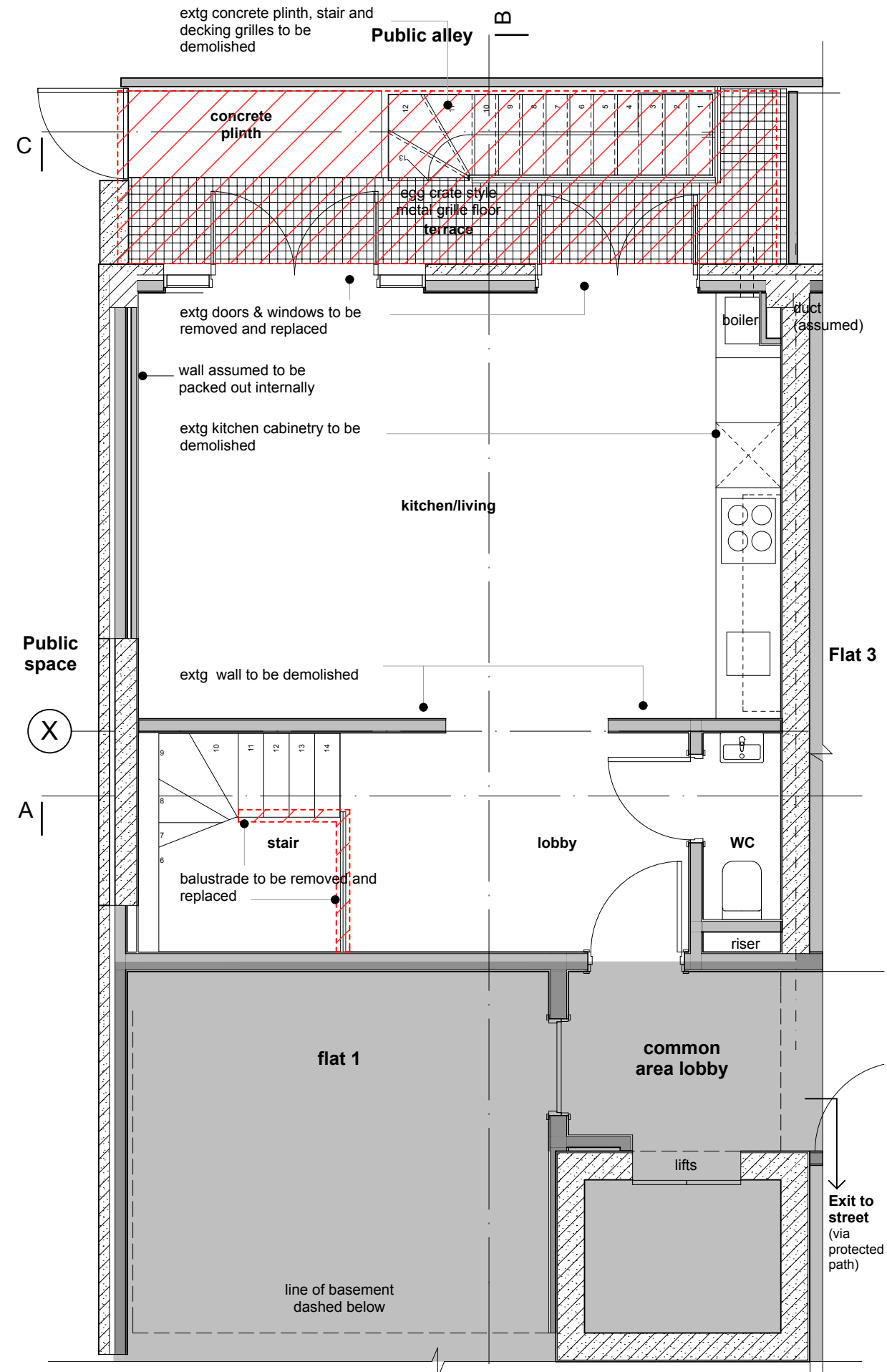
The Contractor is to verify on site prior to construction or manufacture all dimensions. Do not scale from the drawings. The Contractor is to ensure all work complies with the Building Regulations 1991. All items to be installed in accordance with manufacturers recommendations. Copyright rests with the Architect (NZ).

Notes:

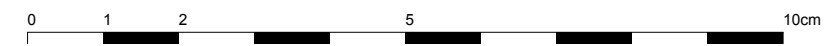
-  masonry structure or cladding
-  extent of demolition shown nominally for guidance



Existing Basement Floorplan



Existing Ground Floorplan



for TP approval	13.11.15	D
for freeholder approval	13.11.15	C
for eng info- deck demolition amended	03.11.15	B
for information - additional info added	02.11.15	A
draft for information	30.10.15	- rev

www.scd-design.com ©SCD DESIGN LTD

Alterations and Additions to:
 Flat 2, 17 Hatton Pl
 London, EC1
Existing Floorplans & Demolition

scale	date	job no.	drg
1:50	Oct 15	15-93	TP-01D
@A3			