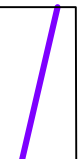


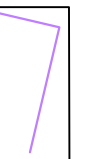
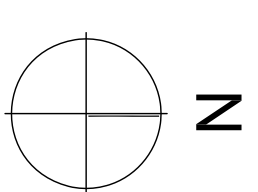



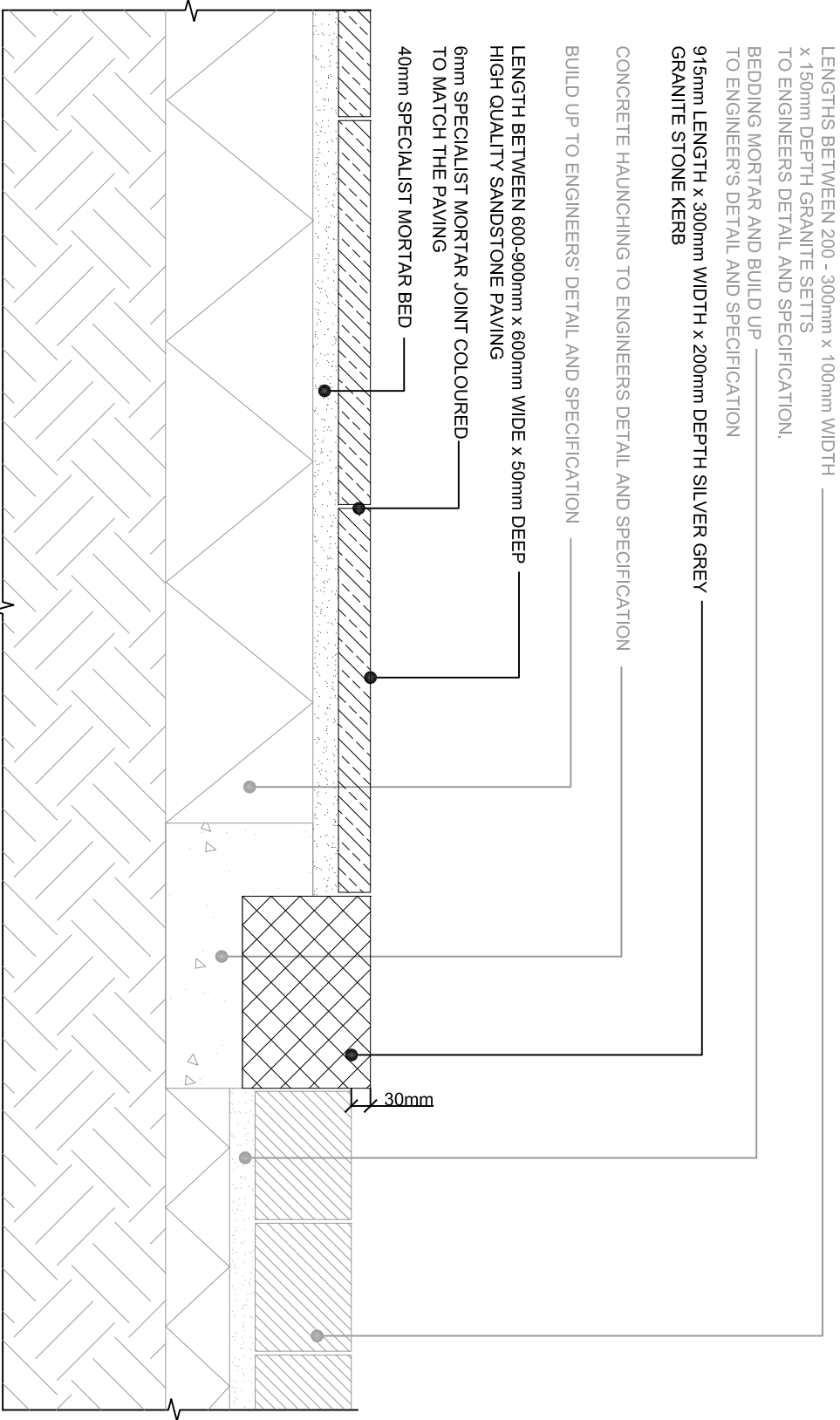
KEY

	RESERVED MATTERS SUBMISSION BOUNDARY
	PROPOSED LEVELS
	EXISTING LEVELS
	EXTENT OF BASEMENT UNDERNEATH THE R ZONE GARDENS

FOR APPROVAL



Project KING'S CROSS CENTRAL BUILDING R3 & ZONE R GARDENS	Drawing Title	ZONE R GARDENS LEVELS PLAN									
	Revision	Date	R05 - Minor amendments	21.07.15							
	R00 First Issue	20.05.15	R06- Levels updated	27.07.15							
	R01 - Levels against R6 updated	05.06.15	R07 - Levels along street revised	19.10.15							
	R02 - Minor amendments	11.08.15									
	R03 - Minor amendments	28.06.15									
	R04 - Minor amendments	07.07.15									
	Client	KCCGP Address: 4 STABLE STREET Telephone: 020 3864 0200									
	Consultant	TOWNSEND Landscape Architects  Unit E, Zealand House London EC2A 4EJ Tel: 020 7729 9333 Fax: 020 7729 3300 E-Mail: info@townsendla.com									
	Project No.	Scale	Approved By	Drawing No.							
	279.11.4	1:250 @ A1 1:500 @ A3	MA	TOWN279.11.4(08)5002							
	Date	Drawing Size	Drawn By								
	MAY 15	A1	SF								
				Revision R07							



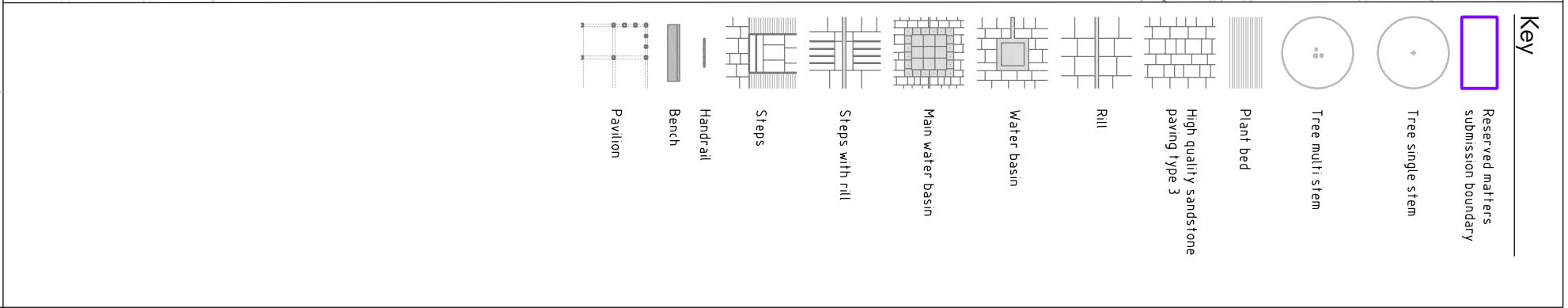
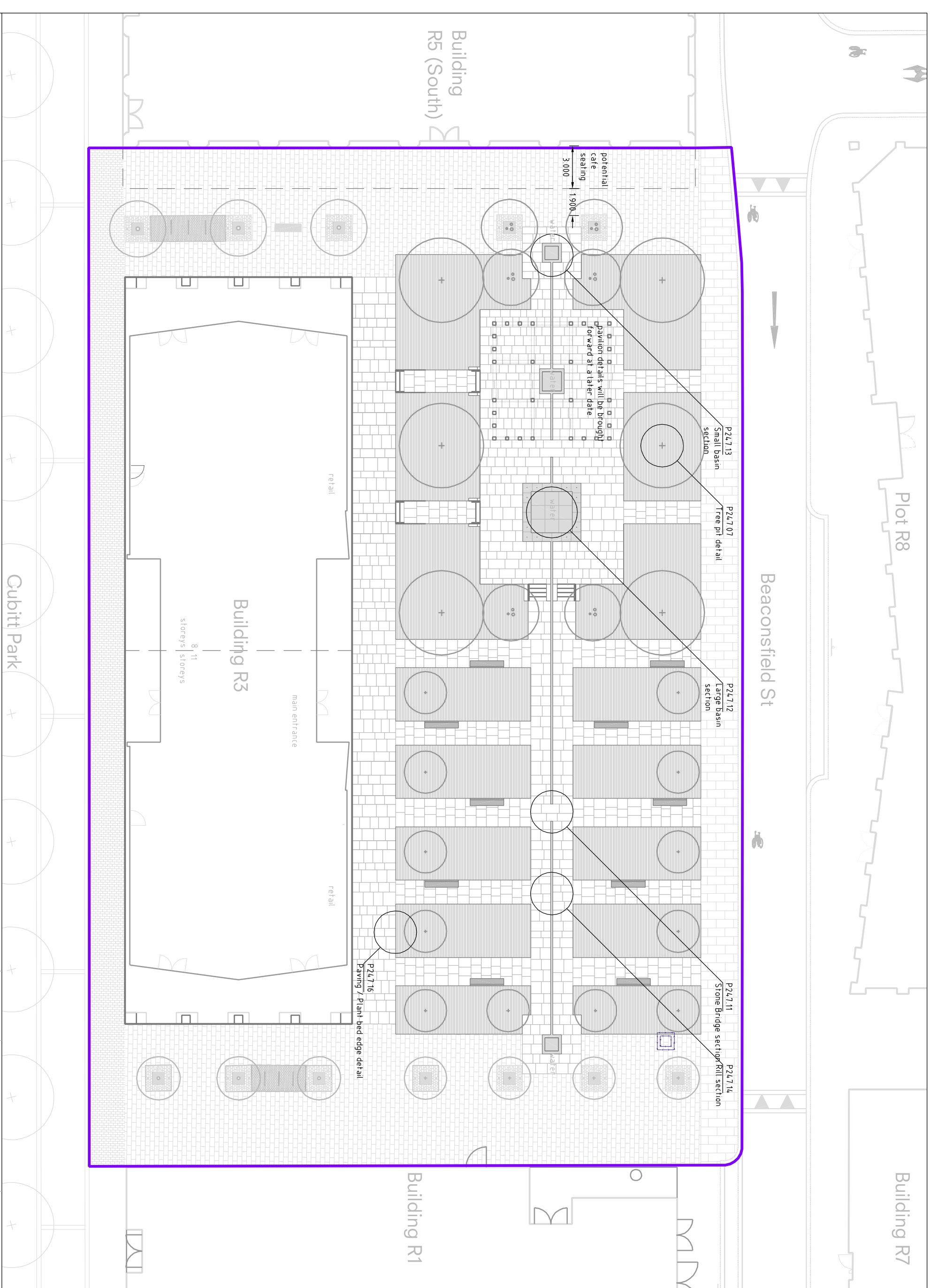
DETAIL 1.03
SANDSTONE PAVING INTERFACE WITH CARRIAGEWAY
SCALE 1:10

FOR APPROVAL

GENERAL NOTES

1. All setting out, levels and dimensions to be agreed on site.
2. The dimensions of all materials must be checked on site before being laid out.
3. This drawing must be read with the relevant specification clauses and detail drawings.
4. Order of construction and setting out to be agreed on site.

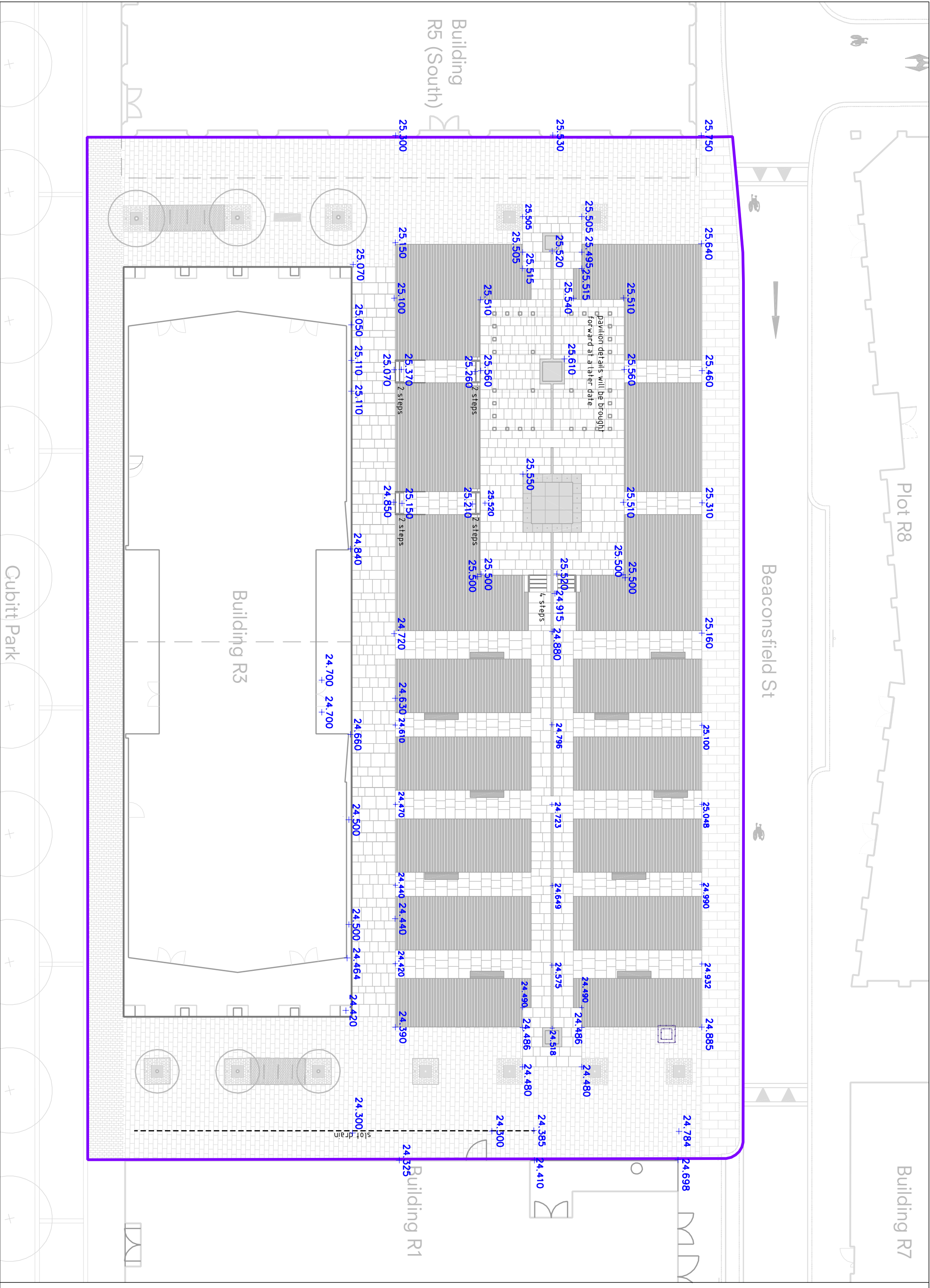
Project KING'S CROSS CENTRAL BUILDING R3 & ZONE R GARDENS		Drawing Title DETAIL 1.03 SANDSTONE PAVING INTERFACE WITH CARRIAGEWAY		Revision		Date		Consultant		Project No.		Scale		Approved By		Drawing No.		Revision	
Client KCCGP				R05 - Minor amendment		20.10.15		TOWNSHEND Landscape Architects		279.11.4		1:10		MA				R05	
				R01 - Minor amendments		11.06.15		Unit 1E Zealand House		Date		Drawing Size		Drawn By					
				R02 - Minor amendments		22.06.15		London EC2A 4HU		MAY 15		A3		SF					
				R03 - Minor amendments		29.06.15		Telephone: 020 7729 9333 Fax: 020 7729 3300											
				R04 - Minor amendments		27.07.15		E-Mail: td@townshenda.com										TOWN279.11.4(08)6103	

[illegible]

Key

Reserved matters
submission boundary

24.660⁺ Proposed levels



Revision

DRAFT A - 22 June 2015

Kerb and single steps removed. All steps 150mm.

Water basins moved inwards.

DRAFT B - 25 June 2015

paved paths shown.

DRAFT C - 20 July 2015

Revert to previous reserved matters submission boundary.

Levels along edge of R3 and Beaconsfield St added.

DRAFT D - 27 July 2015

R3 plan updated. Levels along East Facade of R3 revised.

DRAFT E - 27 July 2015

Levels along East Facade of R3 revised.

Levels revised.

North point



All units in meters.

King's Cross Central
Building R3 and Zone R Gardens
Client
KCCGP

Zone R Gardens
Levels Plan
Detail Tag Location Plan

Drawing no. P247.04

revision no. **DRAFT**

1:250 @A3

30 June 2015

Tom Stuart-Smith Ltd Landscape Design Greenhill House 90/93 Cowcross Street London EC1M 6BF Tel: +44 (0)207 253 2100

FOR APPROVAL

