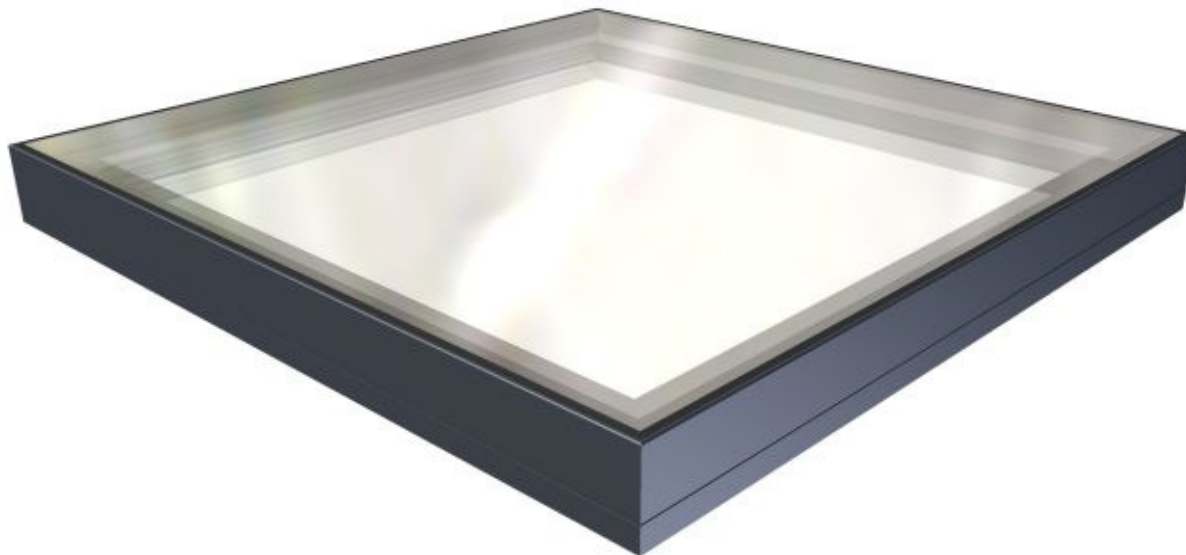


## Product Data Sheet Flushglaze Walk-On



**Name:** Flushglaze (Walk-On)

**Code:** 402

**Type:** Fixed Rooflight for Walk-On

**Description:** A fixed glazing system comprising polyester powder coated aluminium extrusion and double glazed walk-on unit. Designed to be installed at 1° from horizontal. Available in either single or multipart format, the latter consisting of multiple sections of glazing.  
Flushglaze rooflights are designed to provide maximum daylight with minimal visible internal structure.

**Features:** No visible fixings. Achieved using a Glazing Vision design clip-on detail which covers over structural fixings to leave a completely flush external finish. *(Excludes internal and round variants).*

External insulated clip-on flashing on wall abutment detail to improve thermal performance and reduce risk of condensation forming internally.

Increased strength for bonded frames through additional and improved cleating. *(Excludes internal and round variants).*

Technical product catalogue of data including; sales drawings, schedule and manufacturing information.

Kerb cover extrusion to mask the structure of the kerb top from external visibility. This is an optional extra. *(Excludes internal and round variants).*



**Standard Glass Specification:**

Outer: 25.5mm Clear Heat Soak Tested Toughened Laminate  
Spacer: 14mm Black Silicone Sealed Argon Filled Cavity  
Inner: 6mm Clear Soft Low E Toughened

Design loadings for standard glass specification:

Uniform load = 1.5kN/m<sup>2</sup>  
Concentrated load = 2.0kN

Properties for standard glass specification:

Centre pane U-value = 1.1W/m<sup>2</sup>K                      Shading Coefficient = 0.56  
Light Transmittance = 70.0%                      Mass = 67 Kg/m<sup>2</sup>  
Light Reflectance = 10.0%

**Standard Colour:**

RAL 7015 Grey

**Roolight Control:**

N/A

**Power Supply:**

N/A

**Drive Mechanism:**

N/A

**Thermally Broken:**

Dual density rubber foam seal on internal of kerb mount detail and external insulated flashing on wall abutment detail. *(Excludes internal and round variants)*

**Thermal Performance (U-Value):**

U<sub>w</sub> = 1.51 W/m<sup>2</sup>K (1200mm x 1200mm Overall Kerb Dimension)  
U<sub>d</sub> = 1.31 W/m<sup>2</sup>K (1200mm x 1200mm Overall Kerb Dimension)

**Seals:**

Combination of silicone, poly-butyl and rubber seals.

**Security:**

Secured to kerb with structural fixings and poly-butyl adhesive.

**Kerb Dimensions:**

Min Height = 150mm  
Min Thickness = 75mm  
Min Span = 450mm  
Min Width = 400mm  
Min Pitch = 1° (Recommended = 1°)

Max Span = 4000mm  
Max Width = 4000\*mm  
Max Pitch = 70°  
Max Kerb Area = 3.0m<sup>2</sup>\*

*\*For multipart, this is per section*

**NOTE:** MAXIMUM SPAN/WIDTH VARIES DEPENDANT ON THE OTHER. ALWAYS USE THE SCHEDULE TO CONFIRM SIZES.

**Use for Access:**

N/A

**Sales Drawings:**

<u>Drawing Number</u>	<u>Description</u>
402-ASS-003	Walk-On Flushglaze cross section
402-ASS-008	Walk-On Flushglaze with wall abutment
402-ASS-016	Walk-On Flushglaze multi-part with back-to-back angles
402-ASS-048	Walk-On Flushglaze EPDM cross section
402-ASS-050	Internal Walk-on Flushglaze
402-ASS-053	Circular Walk-on Flushglaze kerb detail



**Optional Extras**

<b>Remote Control:</b>	N/A		
<b>Rain Sensor:</b>	N/A	<b>Rain Sensor Overrides:</b>	
		Internal mounted Isolator Switch:	N/A
		Frame mounted Push Button:	N/A
		External mounted Key Switch:	N/A
		External mounted Digital Keypad:	N/A
<b>Solenoid Bolt:</b>	N/A	<b>Dual Colour:</b>	YES
<b>Thermostat:</b>	N/A	<b>Special Colour:</b>	YES
<b>BMS Integration:</b>	N/A	<b>Ritec Coating:</b>	YES
<b>Trickle Vents:</b>	NO (Bespoke)	<b>Downlighter:</b>	NO
<b>Wall Abutted:</b>	YES	<b>Multi-Part</b>	YES
<b>Round:</b>	YES (But external fixings will be visible)	<b>Multi-Part with Glass Fins</b>	NO

