

[www.aps-group.co.uk](http://www.aps-group.co.uk)

bespoke window  
systems created with  
intelligent technology

# Innovative Systems



Performance Window  
**AP100**

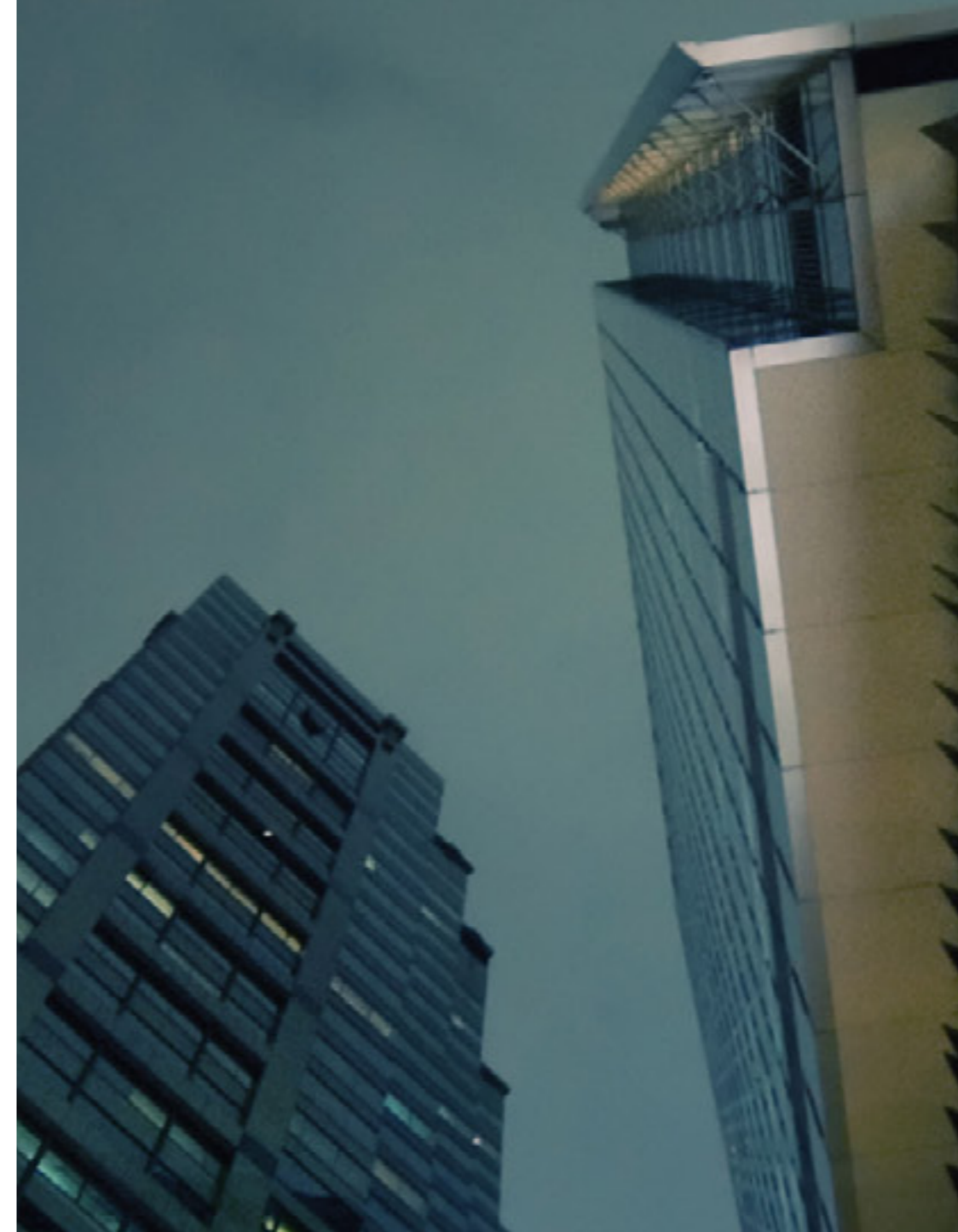
**aps**

aluminium & plastics systems

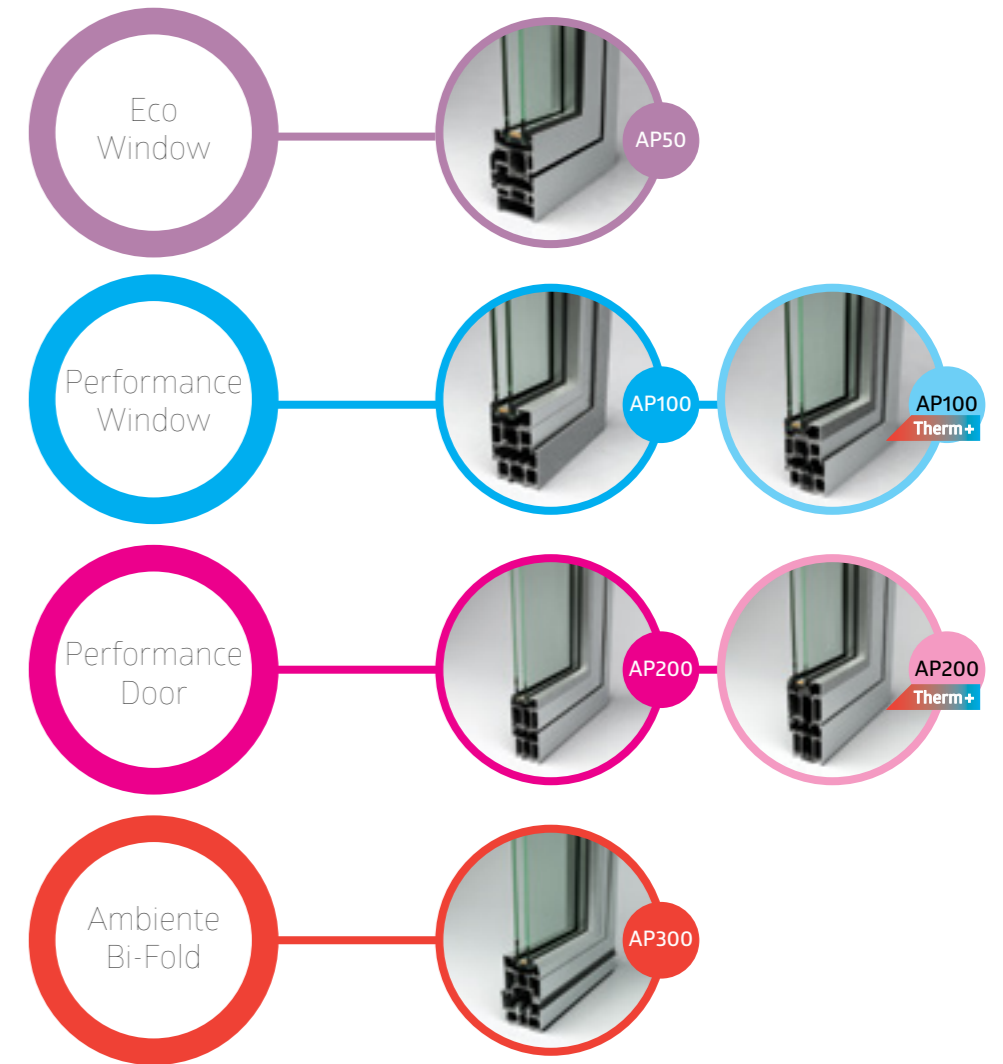
# Flexible innovative solutions High performance systems

APS is a leader in the design and manufacture of architectural aluminium glazing systems for the commercial construction industry. We offer a comprehensive range of systems from curtain walling to window and doors, with an extensive

list of accessories and options. Based in Northern Ireland we extensively distribute throughout the UK and Ireland and we pride ourselves on technical design, developing and delivering an innovative product and service.



## Polyamide Range



# Performance Window AP100

**Weather tested**  
BS6375:PT1 2009

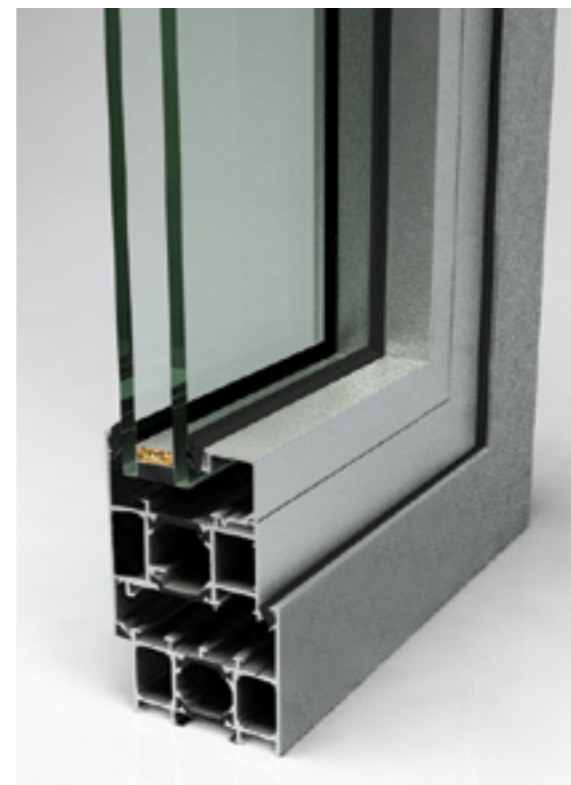
**Enhanced Security**  
BS7950 & PAS24

**Type:** Extruded aluminium alloy profiles, which incorporates a 24mm polyamide thermal break barrier across the "AP100" range.

**Material:** Profiles extruded from aluminium alloy 6063 T6 and T5 to BS EN 12020-2:2001/BS7559:2001

**Finish:** Polyester powder coated, minimum thickness 60 micros to BS6496

**Colour:** choose from any colour across the RAL range.



## Performance Window AP100

### Testing:

Water tightness	600pa
Air permeability	600pa
Water penetration	Zero
Wind resistance	2400pa
Window safety	3600pa

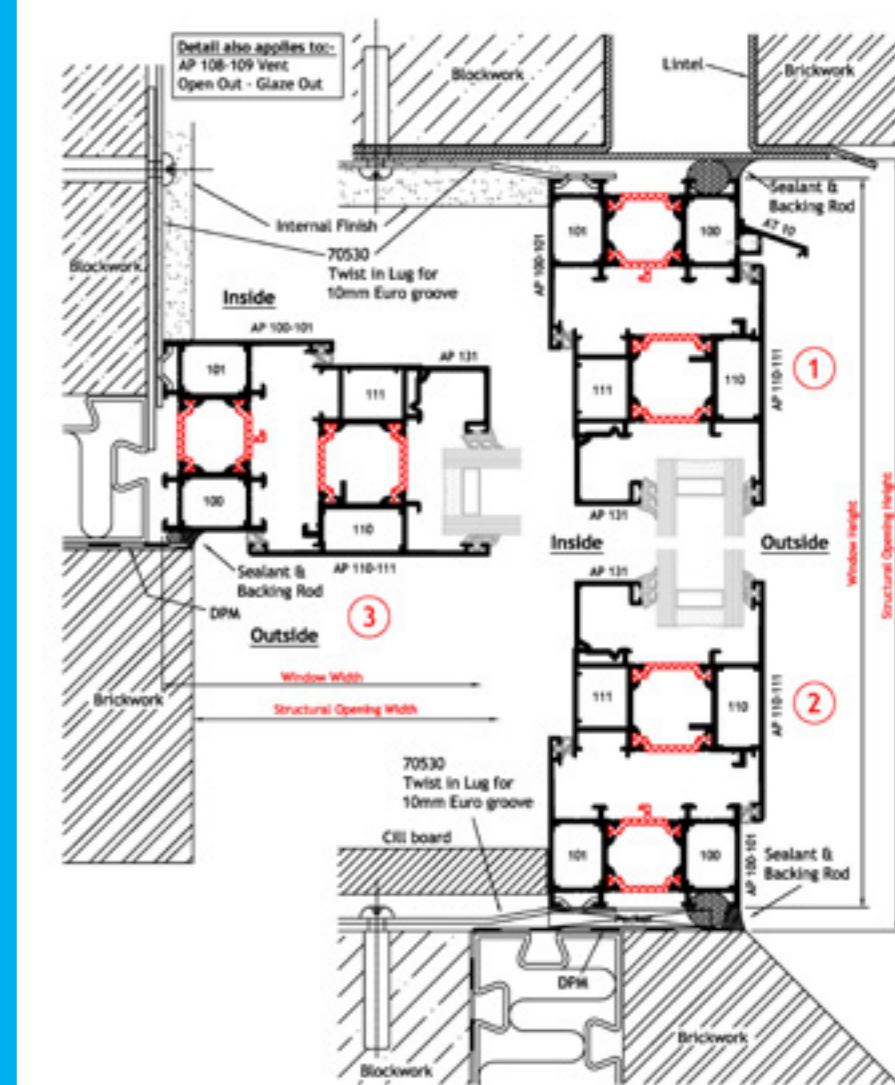
### Glass:

System can accommodate 28mm double glazing to 44mm triple glazed for maximum efficiency.

### Energy Performance:

The AP100 polyamide windows system has a 24mm polyamide thermal break as standard. With all maximum U-values at any point and combined overall U-values exceeding and complying with current Building Control regulations.

Illustration  
AP100



---

## Windows

Top hung - open out  
Bottom Hung - open in  
Side hung - open out  
Side hung - open in  
Tilt and turn  
Pivot windows  
Lockable cockspur handles  
Multi-point espangnolette lockable handles  
Tilt and turn gearing and handles  
Folding can openers  
Electrical actuators

## Doors

Multi point locking with Rhino bolts  
Emergency exit push bars + external access  
Emergency exit touch bar + external access  
Heavy duty restrictors  
Low rise threshold  
Concealed butt hinge or surface 2 part hinge

---



---

## Sustainability and Commitment

APS takes its environmental responsibility seriously. We believe in reducing our impact and carbon foot print, which applies to our suppliers and our clients. We are accredited with ISO14001 and operate an environmental management system.

**Material:**

In terms of sustainability, aluminium is one of the best materials available. Its natural strength, lightness and durability makes it the ideal material for meeting architectural glazing requirements.

For our own production, we use recyclable aluminium billet 100% of the time and all production waste is recycled. Our extrusions carry a life expectancy of over 50 years. Significantly higher than other materials and of course, it's 100% recyclable.



[www.aps-group.co.uk](http://www.aps-group.co.uk)

bespoke window  
systems created with  
intelligent technology



25-27 Enterprise Crescent, Ballinderry Road, Lisburn, County Antrim, BT28 2BP  
Telephone: 028 9266 0500 Fax: 028 9262 9491