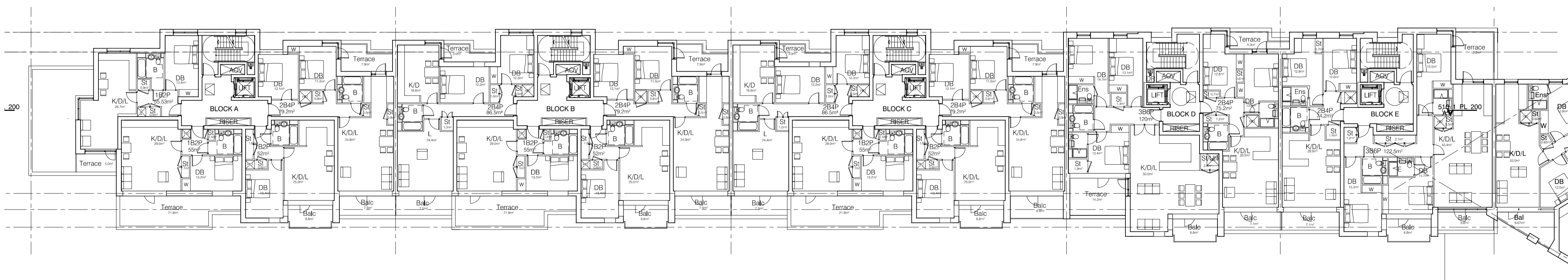




1 Bird box locations  
North West Elevation



2 Bat box locations  
South East Elevation



3 5th Floor Plan: Blocks A-D

GENERAL NOTES

This drawing is © 2015 PTE architects  
 Use figured dimensions only. DO NOT SCALE.  
 All dimensions are in millimetres unless noted otherwise  
 All levels are in metres above ordnance datum unless noted otherwise  
 This drawing must be read in conjunction with all other relevant drawings and specifications from the Architect and other consultants  
 If in doubt, ask

SPECIFICATION:

**3 no. Habi-Range Terraced Sparrow Nest Box, Habitat**  
 A terraced bird box with three chambers designed specifically for Sparrows.  
 Size: 440mm x 215mm x 100mm.  
 Openings: 3no. @ 35mm  
 Internal Divisions: As manufacturer's drawing  
 External Finish: Bonded brick slips to match the adjacent brick type.

**6 no. Habi-Range Swift Box, Habitat**  
 A bird box designed specifically for Swifts.  
 Size: 328mm x 200mm x 140mm.  
 Openings: 1no. @ 65 x 33mm.  
 Internal Divisions: As manufacturer's drawing.  
 External Finish: Bonded brick slips to match the adjacent brick type.

**5 no. Habitat Access Box 001.**  
 Habitat's Standard Bat Box featuring stack bond facing brick work  
 Size: 440mm x 215mm x 103mm.  
 Openings: 2no. @ 35 x 10mm  
 Internal Divisions: As manufacturer's drawing  
 External Finish: Bonded brick slips to match the adjacent brick type.

PLANNING CONDITION 19:

Phase 1: Biodiversity details - Prior to commencement of development of phase 1 other than site clearance & preparation, relocation of services, utilities and public infrastructure and demolition, details (including location, specification and design) of no fewer than 15 bird nesting boxes / bricks (to include both swift and house sparrow to north elevations) and 5 bat bricks (west, south or east elevations) shall be submitted to and approved in writing by the Local Planning Authority prior to any superstructure works commencing on site.  
 The boxes/bricks shall be installed with the development prior to the first occupation of the building to which they form part or the first use of the space in which they are contained.

no.	date	description	drawn	audited
A	09.11.15	Locations updated following LBC feedback. Issued to LBC for discharge of Planning Condition 19 Biodiversity Details	DPD	CC
V	21.08.15	Issued to LBC for discharge of Planning Condition 19 Biodiversity Details	DPD	CC

PLANNING

Design: **Wharf**  
 36 Gresham Street  
 London N1 8LX  
 020 7336 7777  
 forename.surname@ptea.co.uk  
 @ptearchitects  
 www.pollardthomasedwards.co.uk

**Pollard  
 Thomas  
 Edwards**

project	job no.	drawn	audited	scale	date
ABBEY AREA PHASE 1	15-029	DPDCC	1:200@A1	Aug'15	
drawing title	drawing number	revision			
BIRD AND BAT BOX LOCATIONS	029_PL(00)_003	A			