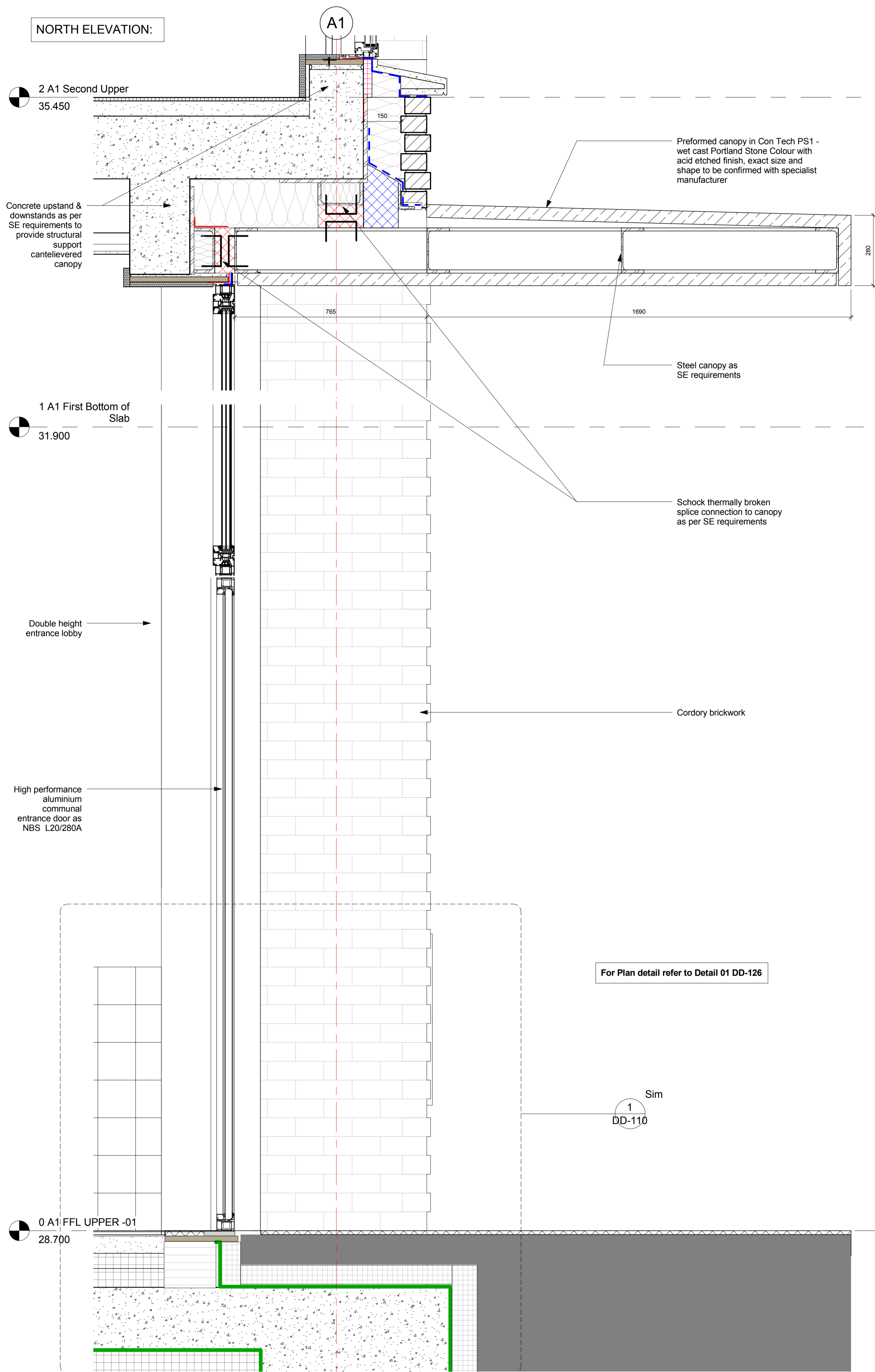
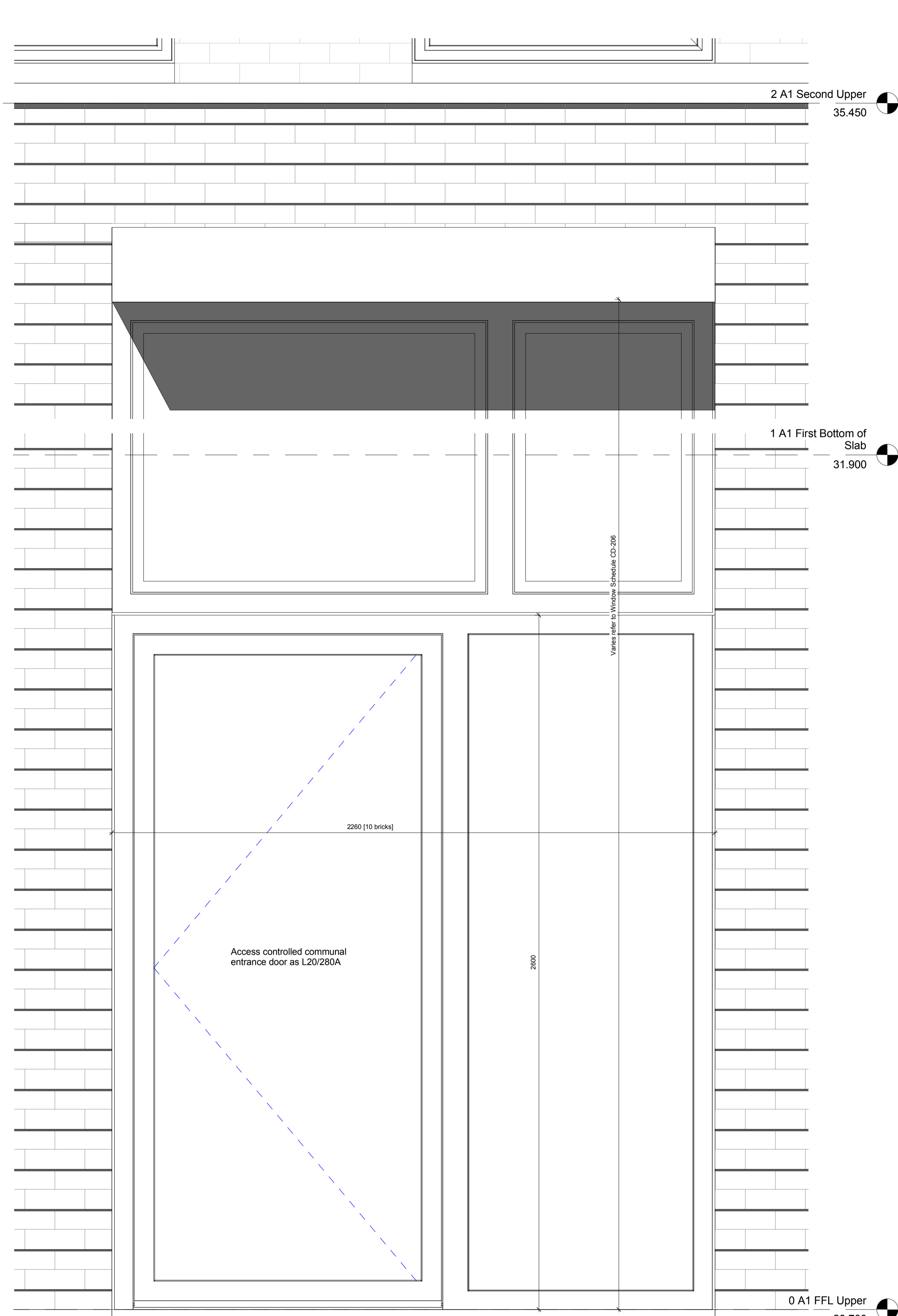


Notes
 This drawing is © Architype Ltd.
 Check this drawing is the latest revision.
 Do not scale from this drawing.
 Do not use the information on this drawing without checking all dimensions on site.
 Do not use any areas indicated for either valuation, purchase, sale or any other form of legally binding contract.
 Do not reproduce any part of this drawing without prior written consent.
 Report any discrepancies on this document to Architype.
 Read this drawing in conjunction with the associated models, specifications and related consultant's documents.
 Equivalent products / materials may be Approved where the Employer's Requirements, Thermal Performance, Airtightness and any other specified performance requirements are met. Subject to Architype "Acceptance".
 All materials to be certified to comply with BS 14001 or BES6001 or be able to provide a Chain of Custody certificate in order to comply Code for Sustainable Homes. All timber species and sources used in this development are not to be listed on the CITES appendices for endangered or threatened species (appendix I, II or III).

NORTH ELEVATION:



1 Communal Main Entrance Doors Section
 1 : 10



2 Communal Main Entrance Doors Elevation
 1 : 10

Rev	Date	Description	CD	RW
2	07.10.15	Further information for release of planning condition	CD	RW
1	10.09.15	Preliminary Issue	CD	EB

Revision Schedule



LONDON: 020 7403 2888 WWW.ARCHITYPE.CO.UK HEREFORD: 01881 542 111

Client: Hill Partnership Ltd for Camden Council
 Project: Agar Grove Block A
 Drawing Title: Window Detail - Front Entrance Doors
 Project: T14011 - ART - DR - A - 1a A 00 - DD-511
 Status: P5 Issued for Planning
 Revision: P2 Pre-Commencement Condition
 Scale: 1 : 10 @ A1 Date: 19 May 15
 Drawn by: CD Checked by: EB
 Internal Project Ref: 8090 Model Ref: AG-RAC2015-A-A