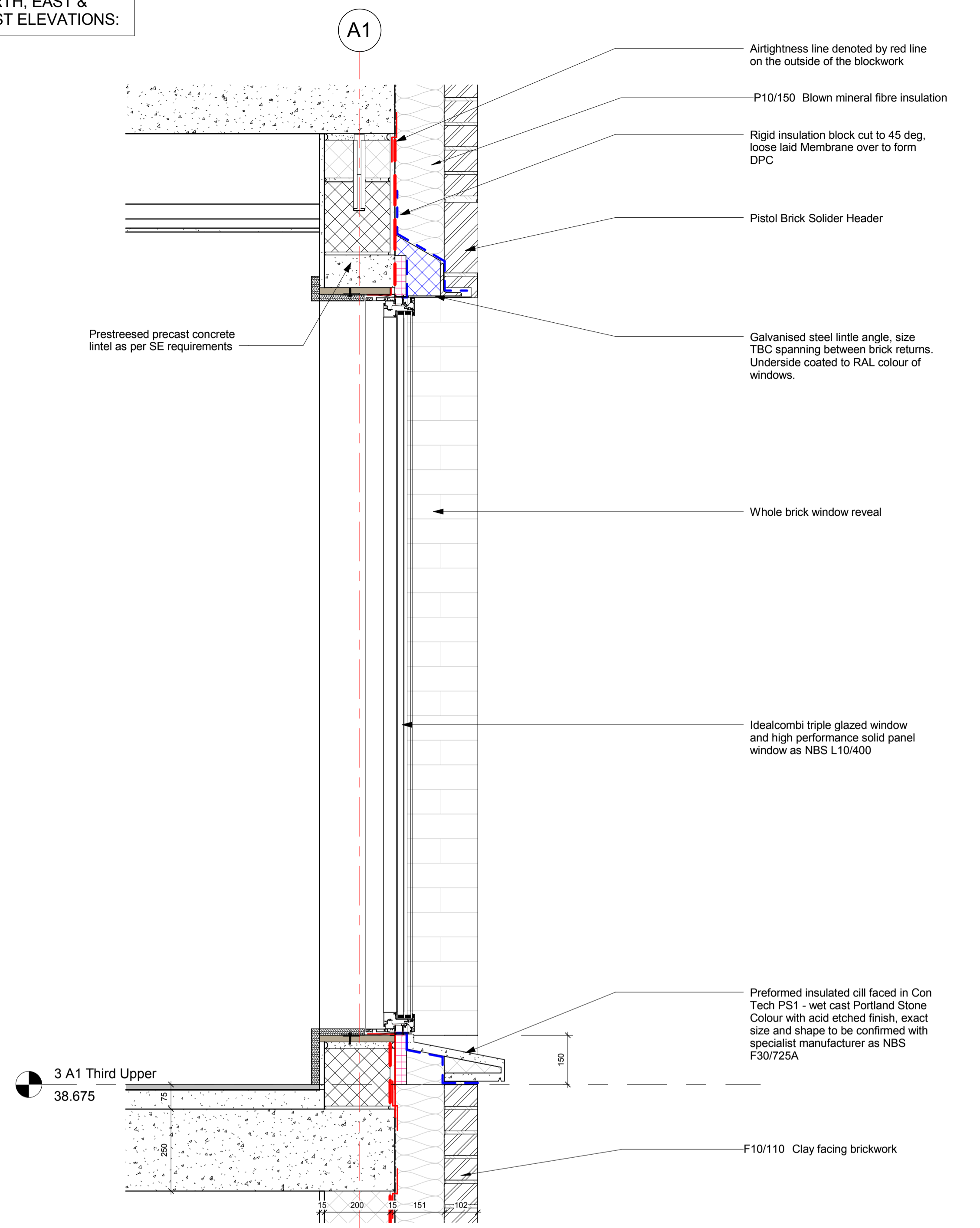
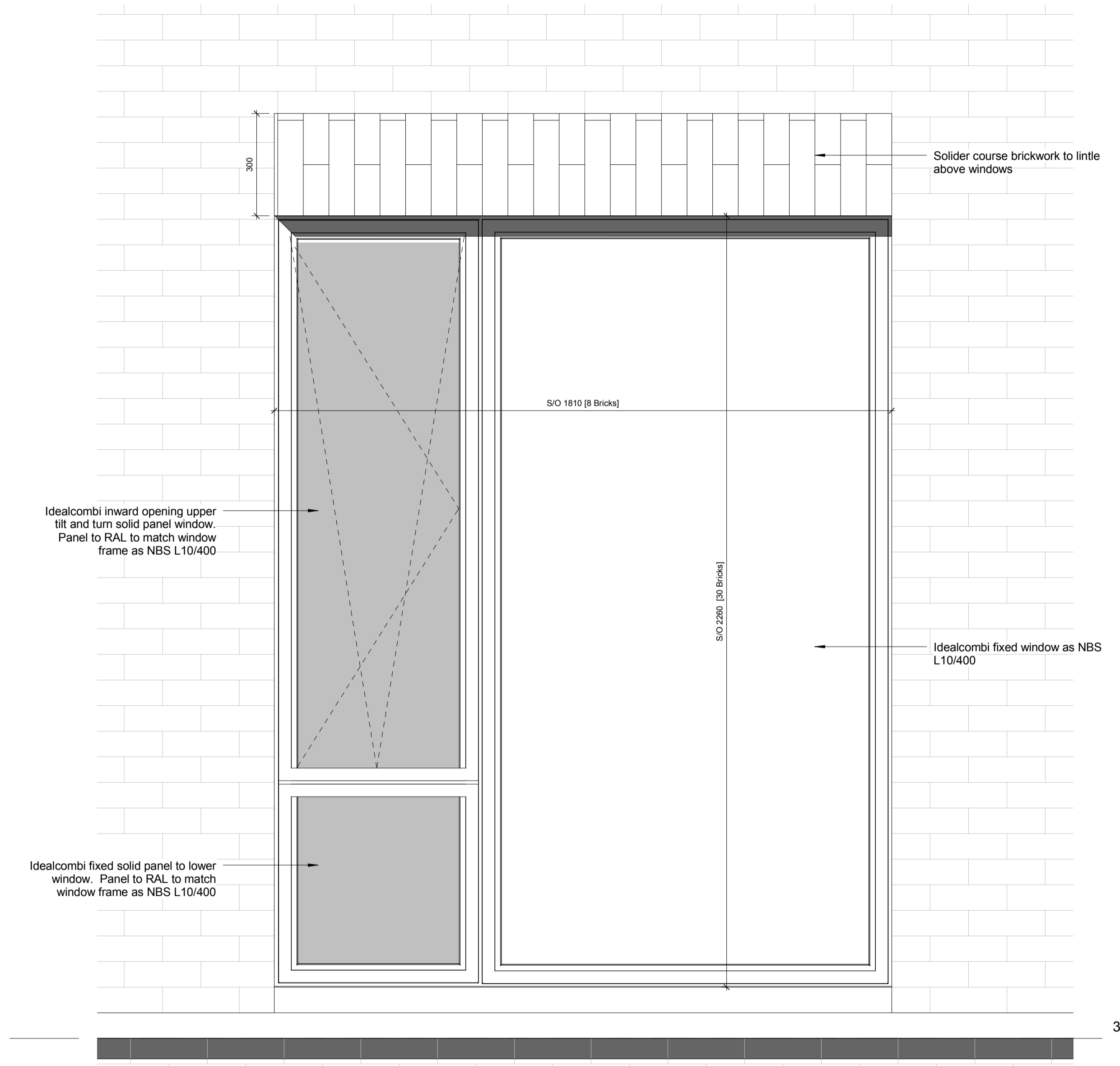


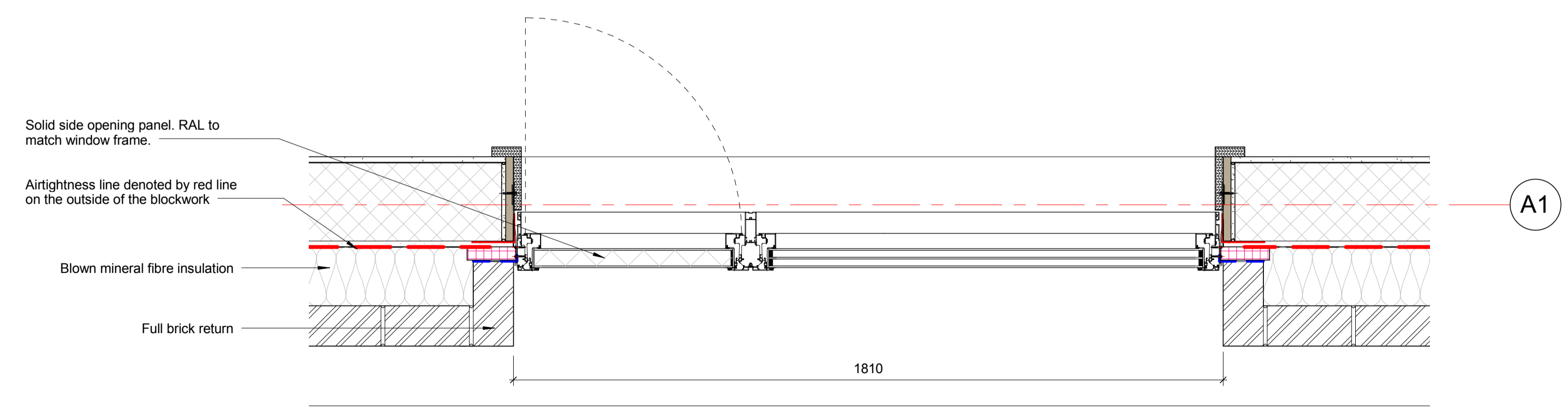
NORTH, EAST & WEST ELEVATIONS:



1 Typical Upper Floor Window Section Head & Sill  
1 : 10



2 Typical Upper Floor Window Elevation  
1 : 10

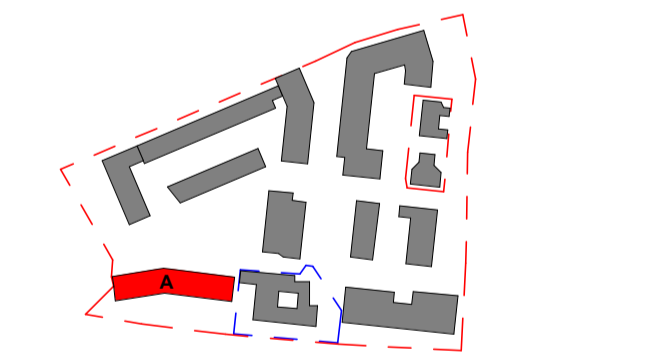


3 Typical Upper Floor Window Jamb  
1 : 10

**Notes**  
 This drawing is © Architype Ltd.  
 Check this drawing is the latest revision.  
 Do not scale from this drawing.  
 Do not use the information on this drawing without checking all dimensions on site.  
 Do not use any areas indicated for either valuation, purchase, sale or any other form of legally binding contract.  
 Do not reproduce any part of this drawing without prior written consent.  
 Report any discrepancies on this document to Architype.  
 Read this drawing in conjunction with the associated models, specifications and related consultant's documents.  
 Equivalent products / materials may be Approved where the Employer's Requirements, Thermal Performance, Airtightness and any other specified performance requirements are met. Subject to Architype "Acceptance".  
 All materials to be certified to comply with BS 14001 or BES6001 or be able to provide a Chain of Custody certificate in order to comply Code for Sustainable Homes. All timber species and sources used in this development are not to be listed on the CITES appendices for endangered or threatened species (appendix I, II or III).

Rev	Date	Description	Drawn	Checked
3	07.10.15	Further information for release of planning condition	CD	RW
2	10.09.15	Primary Issue	CD	ER
1	19.06.15	Pre-Commencement Condition	AP	CD

Revision Schedule



LONDON: 020 7403 2888 WWW.ARCHITYPE.CO.UK HEREFORD: 01981 542 111

Client: Hill Partnership Ltd for Camden Council  
 Project: Agar Grove Block A  
 Drawing Title: Window Detail - Typical  
 Project: T14011 - ART - DR - A - 1a A 00 - DD-507  
 Status: P5 Issued for Planning  
 Revision: P 3 Pre-Commencement Condition  
 Scale: 1 : 10 @ A1 Date: 19 Jun 15  
 Drawn by: AP Checked by: CD  
 Internal Project Ref: 8090 Model Ref: AG-RAC2015-A-A