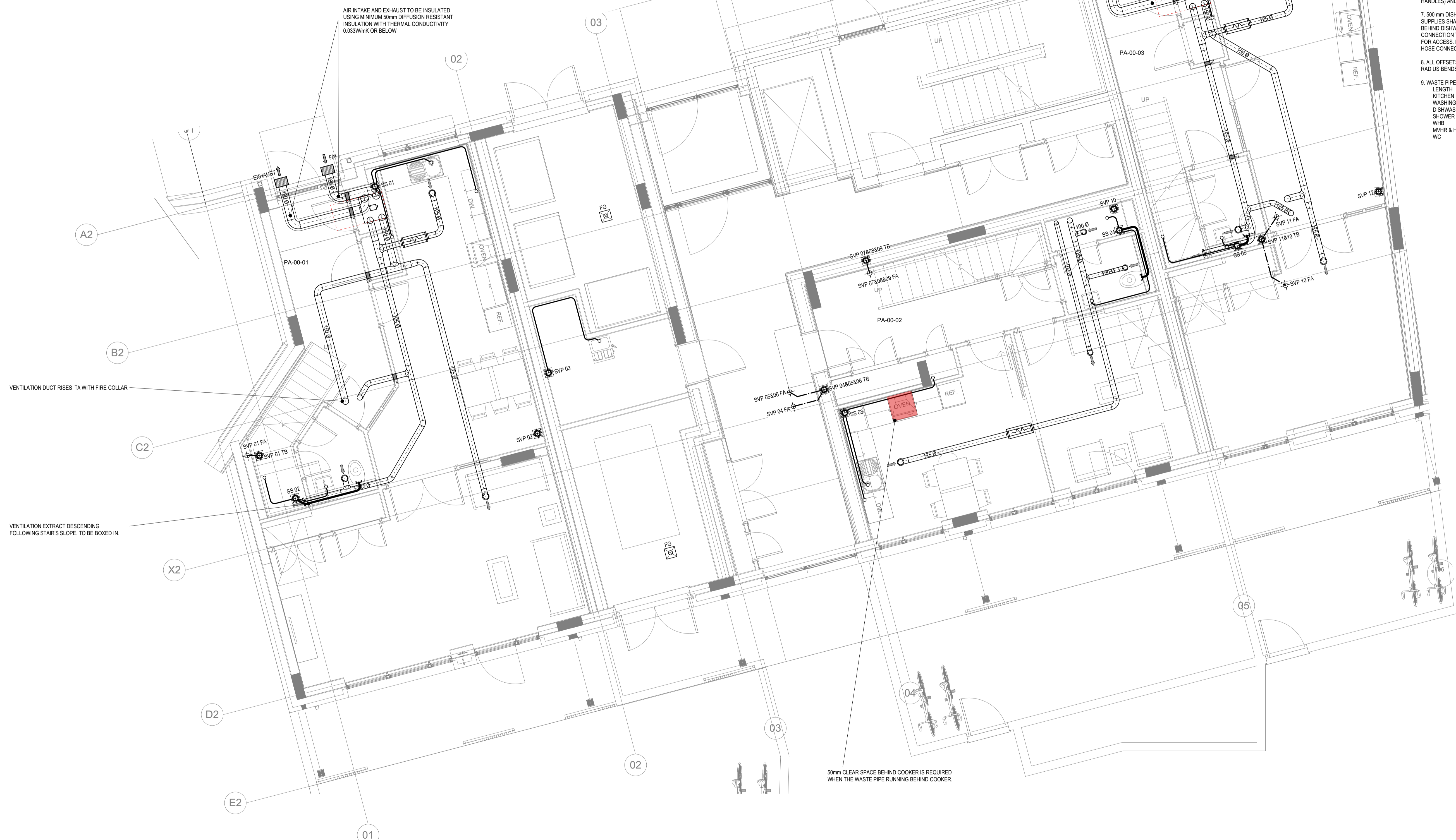


PA-00-01			BASIC 100 (m ³ /h)		
EXTRACT	STANDARD (m ³ /h)	MAXIMUM (m ³ /h)	EXTRACT	STANDARD (m ³ /h)	MAXIMUM (m ³ /h)
KITCHEN	68	89	KITCHEN	50	65
BATHROOM	35	45	BATHROOM	31	40
UTILITY STORE	15	20	UTILITY STORE	15	20
WC	24	31	WC	19	25
TOTAL	142	185	TOTAL	115	150
SUPPLY			SUPPLY		
LIVING / DINING ROOM	50	65	LIVING / DINING ROOM	35	46
BEDROOM 00-01-10	23	30	BEDROOM 00-02-09	31	40
BEDROOM 00-01-11	17	22	BEDROOM 00-02-10	18	24
BEDROOM 00-01-12	25	33	BEDROOM 00-02-11	31	40
BEDROOM 00-01-13	27	35	BEDROOM 00-02-13	17	22
TOTAL	142	185	TOTAL	138	180

PA-00-02			BASIC 81 (m ³ /h)		
EXTRACT	STANDARD (m ³ /h)	MAXIMUM (m ³ /h)	EXTRACT	STANDARD (m ³ /h)	MAXIMUM (m ³ /h)
KITCHEN	50	65	KITCHEN	35	45
BATHROOM	31	40	BATHROOM	20	25
UTILITY STORE	15	20	UTILITY STORE	15	20
WC	19	25	WC	15	20
TOTAL	115	150	TOTAL	115	150
SUPPLY			SUPPLY		
LIVING / DINING ROOM	35	46	LIVING / DINING ROOM	42	56
BEDROOM 00-02-09	31	40	BEDROOM 00-03-09	31	40
BEDROOM 00-02-10	18	24	BEDROOM 00-03-10	31	40
BEDROOM 00-02-11	31	40	BEDROOM 00-03-12	17	22
BEDROOM 00-02-13	17	22	BEDROOM 00-03-13	17	22
TOTAL	115	150	TOTAL	138	180

PA-00-03			BASIC 97 (m ³ /h)		
EXTRACT	STANDARD (m ³ /h)	MAXIMUM (m ³ /h)	EXTRACT	STANDARD (m ³ /h)	MAXIMUM (m ³ /h)
KITCHEN	65	85	KITCHEN	65	85
BATHROOM	35	45	BATHROOM	35	45
UTILITY STORE	15	20	UTILITY STORE	15	20
WC	23	30	WC	23	30
TOTAL	138	180	TOTAL	138	180
SUPPLY			SUPPLY		
LIVING / DINING ROOM	42	56	LIVING / DINING ROOM	42	56
BEDROOM 00-03-09	31	40	BEDROOM 00-03-09	31	40
BEDROOM 00-03-10	31	40	BEDROOM 00-03-10	31	40
BEDROOM 00-03-12	17	22	BEDROOM 00-03-12	17	22
BEDROOM 00-03-13	17	22	BEDROOM 00-03-13	17	22
TOTAL	138	180	TOTAL	138	180



AIR INTAKE AND EXHAUST TO BE INSULATED USING MINIMUM 50mm DIFFUSION RESISTANT INSULATION WITH THERMAL CONDUCTIVITY 0.033W/mK OR BELOW

AIR INTAKE AND EXHAUST TO BE INSULATED USING MINIMUM 50mm DIFFUSION RESISTANT INSULATION WITH THERMAL CONDUCTIVITY 0.033W/mK OR BELOW

50mm CLEAR SPACE BEHIND COOKER IS REQUIRED WHEN THE WASTE PIPE RUNNING BEHIND COOKER.

NOTES:

- ACCESS POINTS ON ALL SOIL AND WASTE PIPES TO BE PROVIDED AT ALL CHANGES OF DIRECTION. ALL SOIL AND WASTE CLEANING ACCESS POINTS ARE TO BE MADE PERMANENTLY ACCESSIBLE IN EVENT OF BLOCKAGES. ACCESS POINTS TO BE PROVIDED AT 1200mm ABOVE FFL ON ALL SVPS AT EVERY FLOOR.
- ALL SOIL AND WASTE PIPES ARE TO BE INSTALLED TO CONTINUOUS AND UNIFORM GRADIENT COMPLYING WITH BUILDING REGULATIONS PART H DRAINAGE AND WASTE DISPOSAL TABLE 3.

	MIN	MAX
110 SOIL PIPEWORK	18mm/m	90mm/m
40-54 WASTE PIPES	18mm/m	90mm/m
32 WASTE PIPES	20mm/m	50mm/m
KITCHEN WASTE		ACHIEVE MAXIMUM GRADIENT
- ALL INTERNAL SOIL STACKS TO BE NOISE INSULATED WITH DENSE MINERAL WOOL.
- ALL TRAPS (OTHER THAN TO WCS) TO BE 75mm DEEP SEAL 'P' TRAPS
- ALL SOIL AND VENT PIPES PASSING THROUGH THE FLOORS TO BE PROVIDED WITH A PROPRIETARY FIRE COLLAR.
- 500 mm WASHING MACHINE STANDPIPE, HOT & COLD WATER SUPPLIES SHALL BE LOCATED IN ADJACENT SPACE, NOT BEHIND WASHING MACHINE, WITH SEPARATE WASTE CONNECTION TO STACK & CUT-OUTS IN ADJACENT UNITS FOR ACCESS. WASHING MACHINE VALVES (BLUE HANDLES) AND HOSE CONNECTORS TO BE PROVIDED.
- 500 mm DISHWASHER STANDPIPE, HOT & COLD WATER SUPPLIES SHALL BE LOCATED IN ADJACENT SPACE, NOT BEHIND DISHWASHER, WITH SEPARATE WASTE CONNECTION TO STACK & CUT-OUTS IN ADJACENT UNITS FOR ACCESS. DISHWASHER VALVES (BLUE HANDLES) AND HOSE CONNECTORS TO BE PROVIDED.
- ALL OFFSETS IN ANY SVP STACK SHALL BE WITH LONG RADIUS BENDS - 200mm CENTRE LINE RADIUS.
- WASTE PIPE SIZES SHALL BE AS FOLLOWS:

LENGTH	3m MAX.	4m MAX.
KITCHEN SINK	40mm	50mm
WASHING MACHINE	40mm	50mm
DISHWASHER	40mm	50mm
SHOWER	40mm	50mm
WHB	40mm	50mm
MVHR & HIU	32mm	32mm
WC	100mm (6m MAX.)	

LEGEND:

- FB FROM BELOW
 - FA FROM ABOVE
 - TB TO BELOW
 - LL LOW LEVEL
 - HL HIGH LEVEL
 - SVP SOIL VENT PIPE
 - SS STUB STACK
 - FG FLOOR GULLY
 - RWP RAIN WATER PIPE
 - AAV AUTOMATIC AIR ADMITTANCE VALVE
 - RWO RAIN WATER OUTLET
- SPIRAL WOUND GALVANIZED STEEL LINDAB SR CIRCULAR DUCT
 - LINDAB CROSSTALK ATTENUATOR (600mm LENGTH)
 - LINDAB SUPPLY VALVE CEILING MOUNTED
 - LINDAB EXTRACT VALVE CEILING MOUNTED
 - LINDAB EXTRACT VALVE WALL MOUNTED
 - FD
 - LINDAB FIRE DAMPER
 - VENTILATION LINEAR DIFFUSER TERMINALS LOCATION IN SOFFIT MINIMUM FREE AREA REQUIRED 0.026 m²
 - ZEHNDER COMFOAIR 350 LUXE PH (LEFT VERSION) PASSIVHAUS COMPLIANT MECHANICAL VENTILATION HEAT RECOVERY UNIT. UNIT SUPPLIED WITH 2"150mm (SUPPLY) EXTRACT AND 2"180mm (EXHAUST) INLET SPIGOTS. 15 PLASTIC CONDENSATE DRAIN TO BE RUN INTO TUNDISH & HEF20 HYGIENE TRAP & CONNECT TO SVP. PRE HEATER BUILT IN.
 - ZEHNDER COMFOAIR 350 LUXE PH (RIGHT VERSION)

Rev	Description	Date	By
B	VENTILATION LAYOUT REVISED.	03/11/15	A.F.
A	VENTILATION LAYOUT REVISED DRAINAGE LAYOUT INCORPORATED.	20/10/15	A.F.
Rev	Amendment Details	Date	By



Job Name:
Agar Grove Block A

Title:
Ground Floor:

Ventilation & Drainage Services Layout (Sheet 1 of 2)

Scale:	Date:	Checked:	Drawn by:	Approved:
1:50 @ A1	Aug 15	M. R.	F. W.	M. R.
Drp. No:	RA5494/5701			Revision B

ROBINSON ASSOCIATES
 CHARTERED BUILDING SERVICES ENGINEERS
 www.robinsonassociates.co.uk
 Telephone: 0203 637 1122
 Unit 1, 6 Enterprise Way London SW18 1FZ