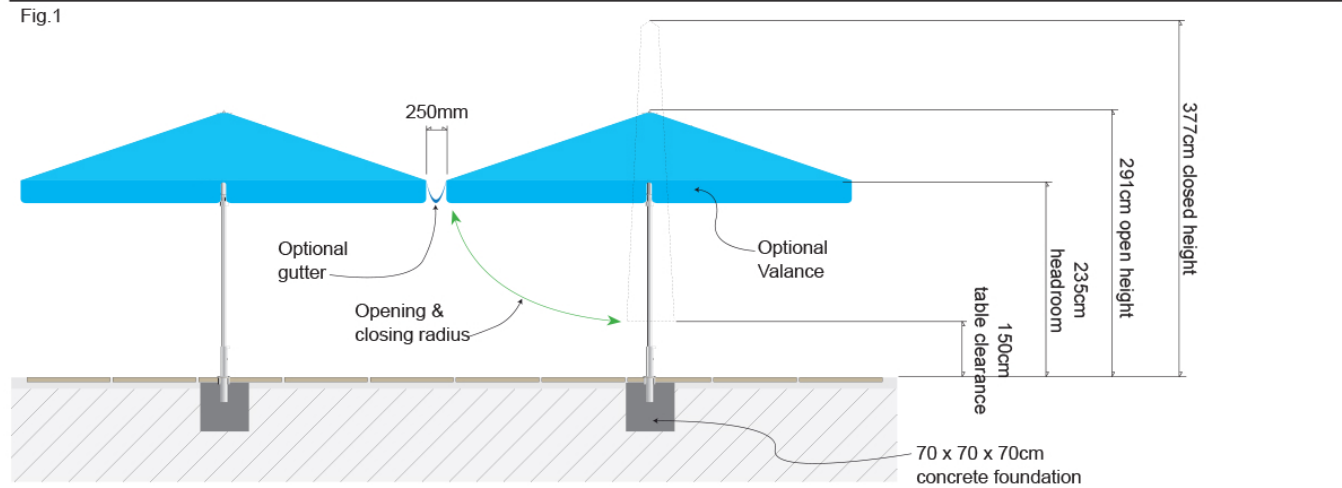


# TECHNICAL SPECIFICATIONS



## HEAVY CONTRACT 3.5M X 3M PARASOL



<b>Parasol size</b>	<b>3.5m x 3m</b>
<b>A Open height</b>	291cm
<b>B Table Clearance</b>	150cm
<b>C Closed height</b>	377cm
<b>D Headroom with valance</b>	207cm
<b>E Headroom without valance</b>	235cm
<b>Coverage</b>	10.5m <sup>2</sup>
<b>Mast Diameter</b>	8cm
<b>Weight</b>	29kg
<b>Height of upper socket</b>	42cm
<b>Height of lower socket</b>	45cm
<b>Minimum foundation</b>	70 x 70 x 70cm

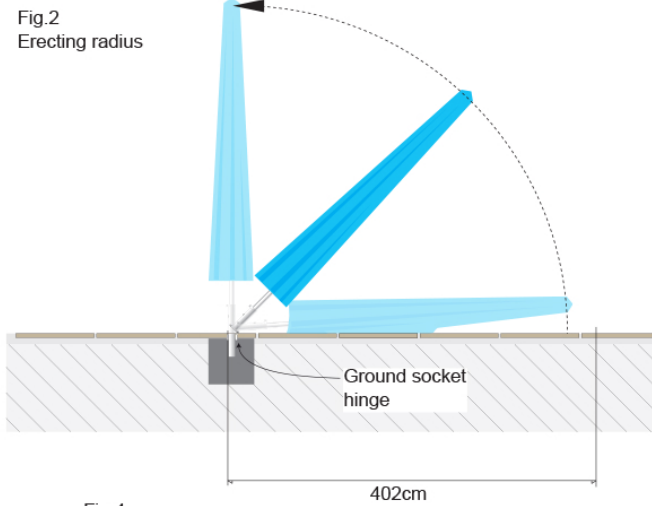


Fig.3

### Top view of upper socket

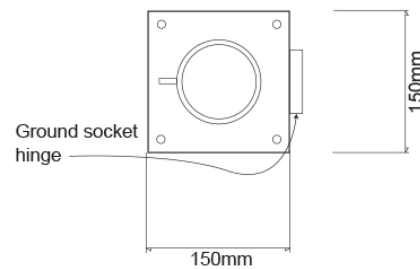
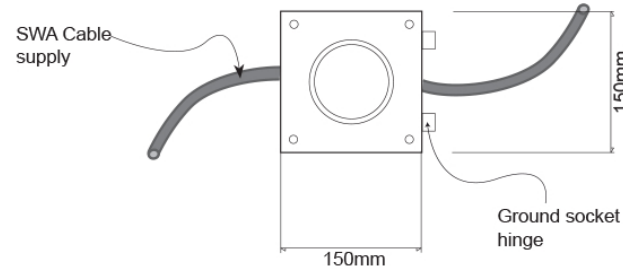


Fig.4

### Top view of lower socket



### IMPORTANT NOTES:

- When locating foundations beware of possible obstructions from trees, lampposts, signs, outward opening doors, French windows etc and that these do not interfere with the parasol opening and closing radii (Fig.1).
- Lower ground sockets must be installed 100% true & plumb level (Figs. 5 & 6).
- The top of the lower socket flange plate must be 6mm below finished ground level (Fig. 6).
- Ensure there is 402cm free space to allow the parasol to be erected from the ground using the hinge (Fig. 2 Erecting radius).
- Lower ground sockets must be allowed maximum penetration into the concrete foundation (Fig. 6).
- Maintain minimum 250mm gap between neighbouring open parasols and between open parasols and walls (Fig.1).

Breezefree Ltd. A102 Riverside Business Centre, Bendon Valley, London, SW18 4UQ  
Telephone: +44 (0)20 8877 3030 Facsimile: +44 (0)20 8870 6877 info@breezefree.com www.breezefree.com

# TECHNICAL SPECIFICATIONS

## HEAVY CONTRACT 3.5M X 3M PARASOL

Fig.5

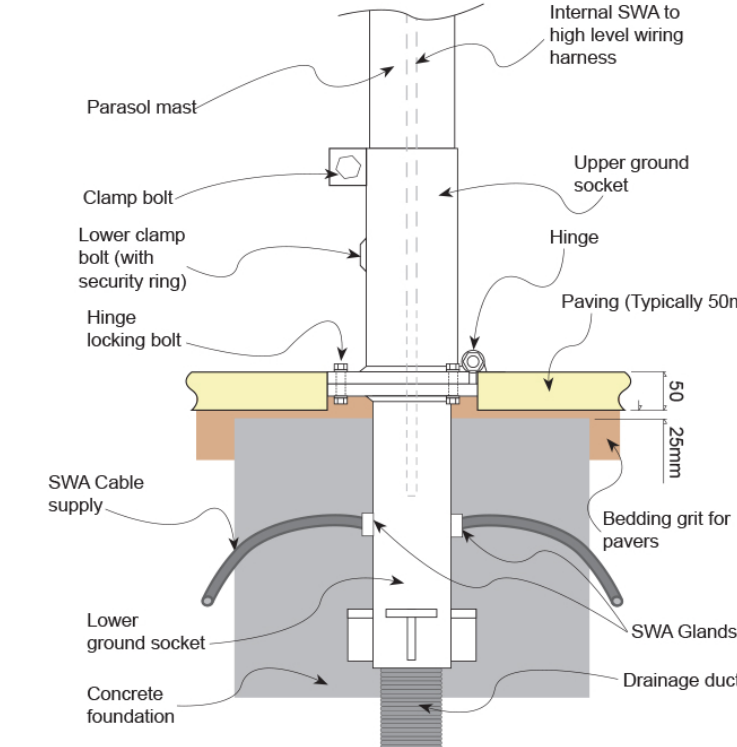
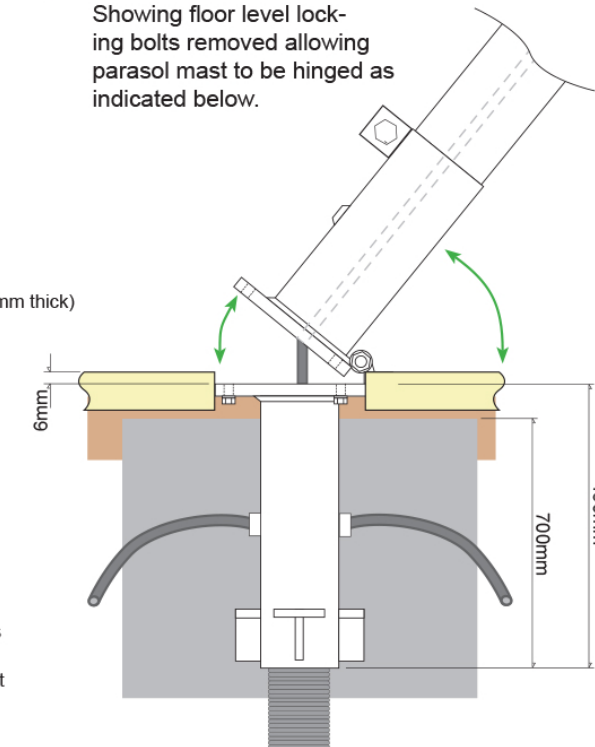


Fig.6

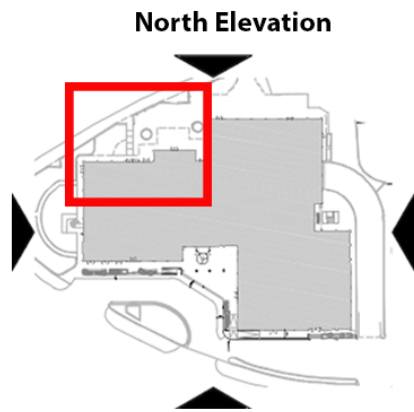


### IMPORTANT NOTES (CONTINUED):

- C30P concrete foundations recommended.
- The stated minimum foundation size is dependant upon subsurface conditions and assumes hard compacted ground.
- When looser ground is encountered, increase the foundation size accordingly and where concrete screeds are encountered the foundation size may be reduced accordingly.
- If any of the minimum foundation dimensions can not be met, contact Breezefree.
- Typical concrete curing times are 24hrs/10cm (subject to mix & season) and sufficient time must be allowed for foundations to fully cure prior to the parasols being erected.
- Adequate protection must be provided around the foundation to avoid the socket getting kicked or moved prior to curing.
- Before setting the lower ground socket into the concrete foundation:
  - SWA cables must be fully made-off at the brass stuffing glands (located on the side of the lower ground socket - Figs. 5 & 6)
  - CPC bonding made-off to the socket casing
  - Minimum 1m SWA inner cores must be left out of the upper socket for later connection to the 'bullet connector' within the parasol mast.
  - Lay suitable drainage ducting (minimum 50mm diameter recommended - Figs. 5 & 6)
- When lower ground sockets are to be left unattended for any time before parasol installation, a cover plate must be fitted to protect the cables and eliminate trip hazards (with exposed cables coiled up inside the socket). **Coverplates available to order.**
- Where raised decking exists or is proposed over foundations, Breezefree must be notified of heights and a minimum 60 x 60cm access trap would be required in the decking, centred over the ground socket, to facilitate fixing down & adjustment of the upper socket and making-off electrical connections.
- Where separate Heat/Light switching or Heater Controllers are required, use 2 separate SWA supplies (Figs. 5 & 6).
- Where separate switching or Heater Controllers are NOT required a single SWA supply may be used.
- Electrical specifications are supplied separately.
- It remains the General Contractor or nominated sub-contractor's responsibility to ensure that these specifications are carefully followed and pre-cured sockets are duly protected.
- Breezefree will not accept any responsibility for non-conformance to this specification.

### IF IN ANY DOUBT CONTACT BREEZEFREE FOR FURTHER GUIDANCE.

Breezefree Ltd. A102 Riverside Business Centre, Bendon Valley, London, SW18 4UQ  
Telephone: +44 (0)20 8877 3030 Facsimile: +44 (0)20 8870 6877 info@breezefree.com www.breezefree.com



Key

Merchant Exchange  
20 Bell Street  
Glasgow  
G1 1LG



+44(0)141 552 2194  
wearica.com

project title //  
LONDON MARRIOTT HOTEL  
Regents Park

drawing title //

Parasol Detail

issue stage //

PLANNING

date // drawn // scale @ A3 //  
JULY 15 KS

project // dwg number // revision //  
711 AL(00)213 -