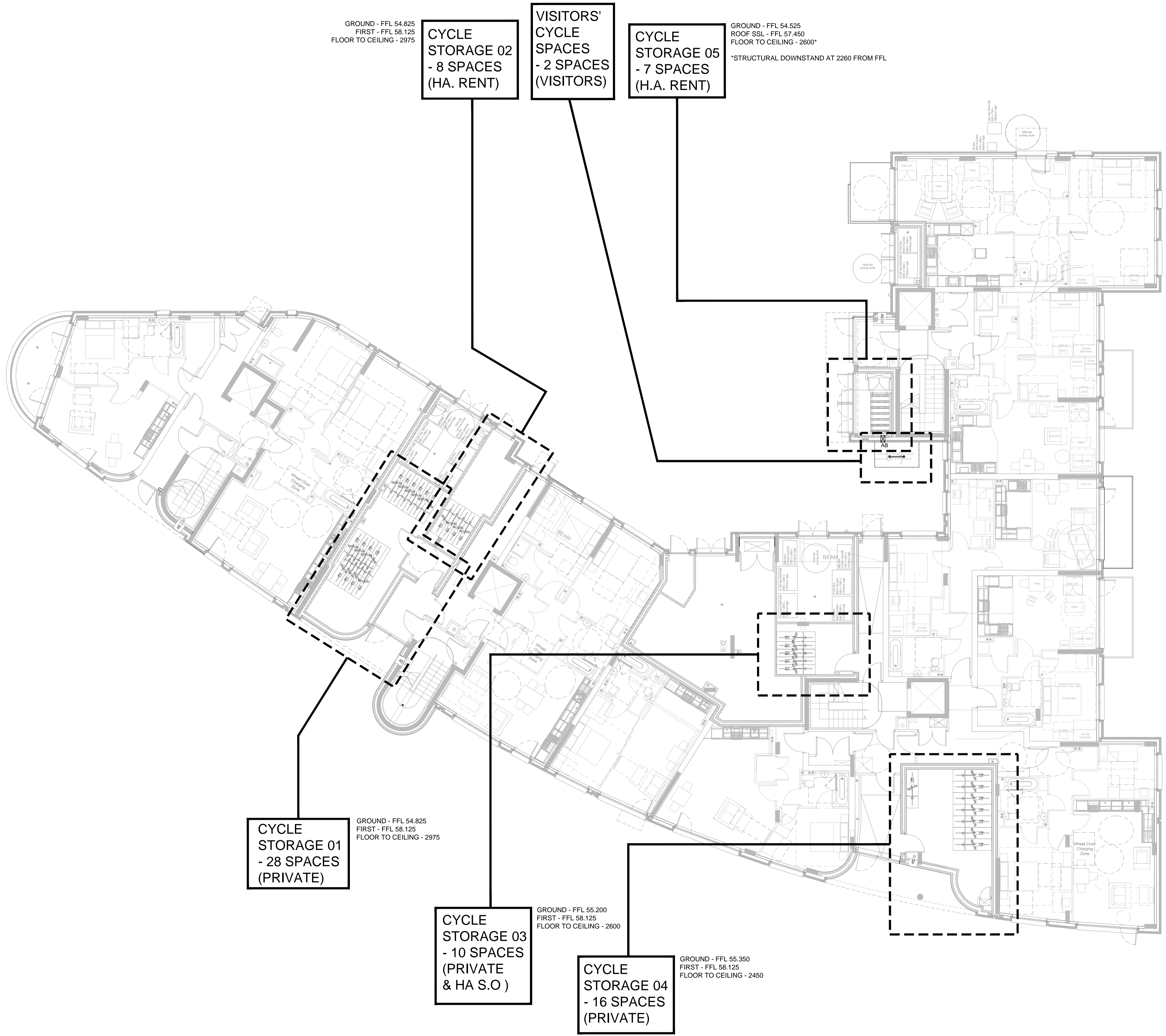


04/17/2015 14:16:32
 Ground - Level - 0.00
 Plan file path: X:\Drawings\141322 - Lawn Road\Drawings\Cycle & Visitor Management



GROUND - FFL 54.825
FIRST - FFL 58.125
FLOOR TO CEILING - 2975

CYCLE STORAGE 02
- 8 SPACES
(HA. RENT)

VISITORS' CYCLE SPACES
- 2 SPACES
(VISITORS)

CYCLE STORAGE 05
- 7 SPACES
(H.A. RENT)

GROUND - FFL 54.525
ROOF SSL - FFL 57.450
FLOOR TO CEILING - 2600*
*STRUCTURAL DOWNSTAND AT 2260 FROM FFL

CYCLE STORAGE 01
- 28 SPACES
(PRIVATE)

GROUND - FFL 54.825
FIRST - FFL 58.125
FLOOR TO CEILING - 2975

CYCLE STORAGE 03
- 10 SPACES
(PRIVATE & HA S.O)

GROUND - FFL 55.200
FIRST - FFL 58.125
FLOOR TO CEILING - 2600

CYCLE STORAGE 04
- 16 SPACES
(PRIVATE)

GROUND - FFL 55.350
FIRST - FFL 58.125
FLOOR TO CEILING - 2450

CONTRACT DOCUMENT

This drawing and any related notes are protected by copyright. To the extent that this is a design document it is, in addition, protected by design right. All rights in them are reserved. They are provided for your information only. No part of them or any design to which they relate may be reproduced in any form or any means without the prior written permission of Fairview New Homes Limited, except as expressly permitted by law. The doing of any unauthorised act in relation to them may result in both a civil claim and criminal prosecution.

NOTES:

- SITE BOUNDARY
- 1. 100mm insulation build up allowed for to soffits

B	Updated to planing comments	JJ	04.11.15
A	RFI 413 0007 Cycle Canopy	JJ	09.09.15
2A	Issued for Planning Discharge	JJ	27.07.15
2	Preliminary Issue	BG	19.06.15
P2	QA Issue	JJ	05.06.15
P1	For approval	AMP	14.05.15



Stanmore Business & Innovation Centre
Honeypot Lane | London | HA7 1BT
T: 0208 731 5210 | E: design@bm3.co.uk

Technical Department,
50 Lancaster Road, Enfield,
Middlesex EN2 0BY
Tel: 020-8366-1271
Fax: 020-8342-3861
E-mail: technical@fnhld.co.uk

Drawn:	AMP	Date:	17-04-2015	Scale:	1:100
Checked:	JJ	Approved:	JJ	Architectural	

Title: **LAWN ROAD,
GROUND FLOOR
CYCLE STORAGE
PLAN**

Project: **LAWN ROAD - BELSIZE PARK**

Drawing Number:	FNH413-22.100	Rev:	B
-----------------	----------------------	------	----------