

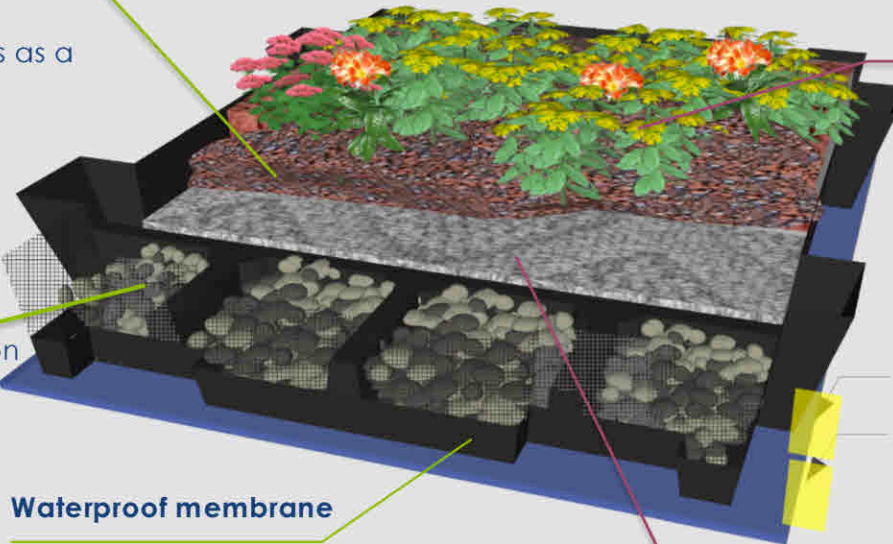
S-Pod Component

40mm Coarse Substrate

A specialised blend of recycled lightweight organic materials acts as a growing medium

Expanding Clay

Water retaining division chambers provide protection against drought



Vegetation

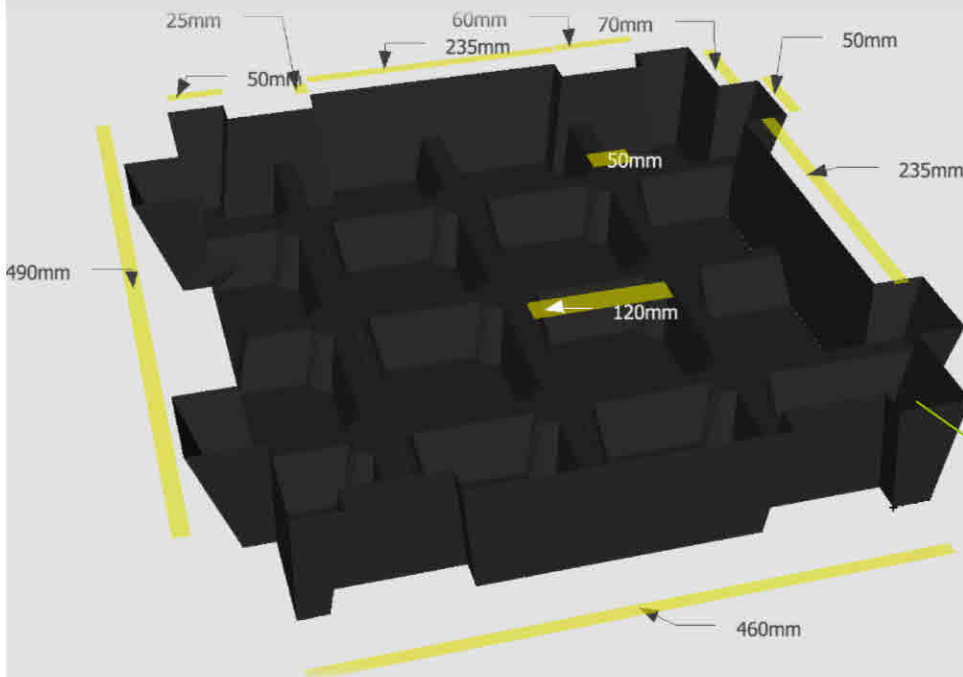
Up to 12 different sedum species ensures optimal round year performance

Waterproof membrane

Protects your roof from water damage and leaks

Filter Fleece

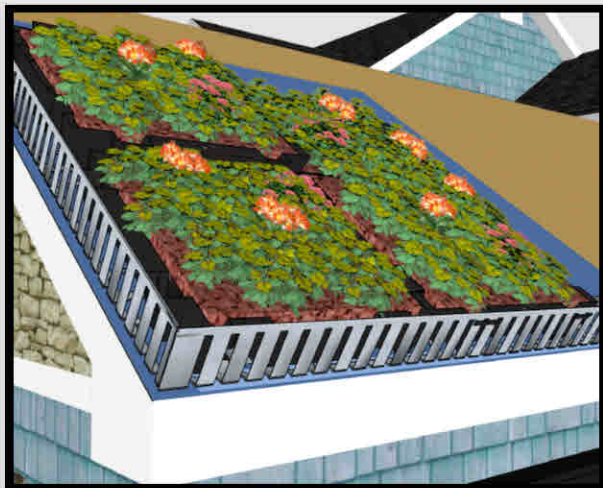
Ensures efficient water and nutrient distribution and retention, enhancing growth and root anchorage



S-Pod Tray

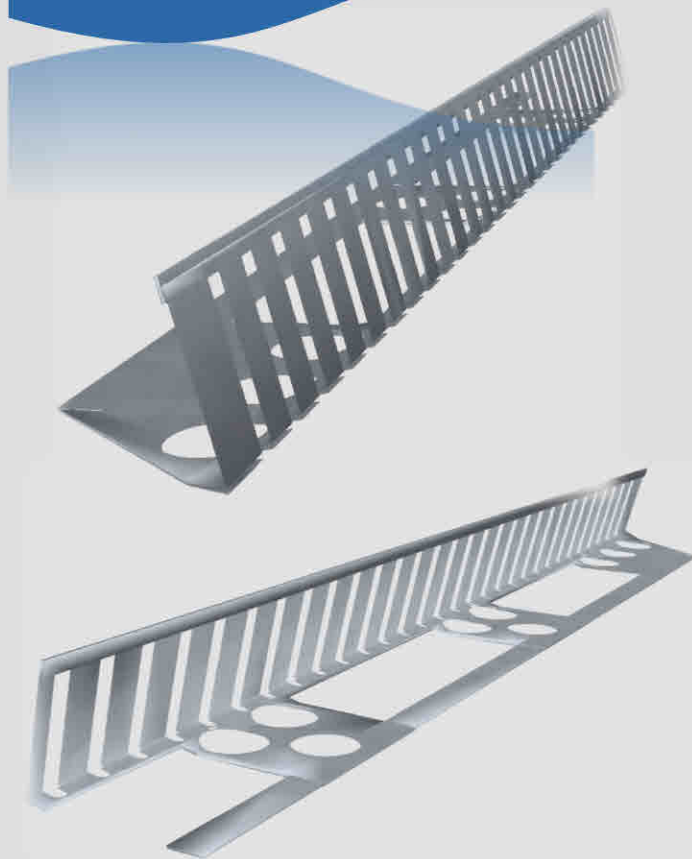
Designed to aid water drainage and quick installation with interlocking sides

Edge Guard

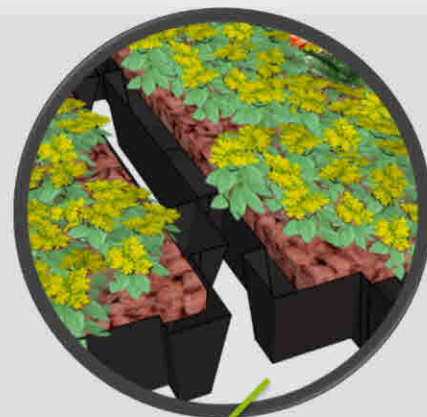
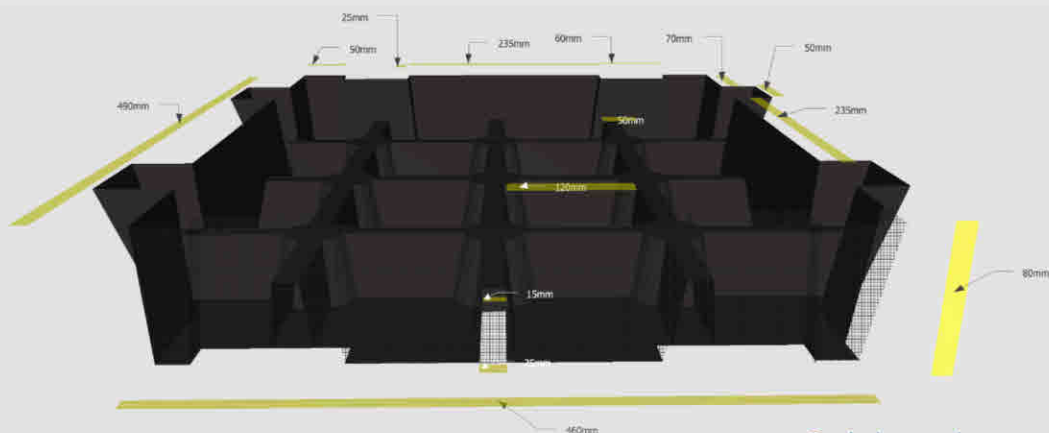


- Lightweight aluminium edge trim to retain green roof systems
- Option to powder coat to any colour
- Connections and corners available
- Suitable on pitched and flat roofs

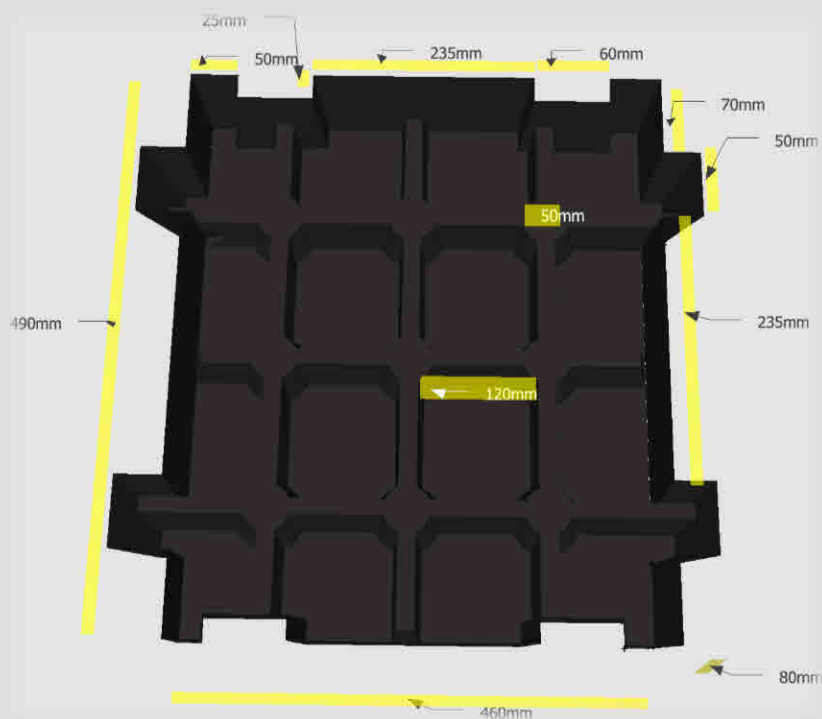
- Supplied standard size
 - Height – 50mm
 - Base – 100mm
 - Length – 2400mm
- Up to 300mm height available



S-Pod Design



Quick and easy
interlocking side assembly



- Saturated Weight – 48Kg/m²
- 490x460x80mm size
- 100% recycled plastic
- UV resistant

