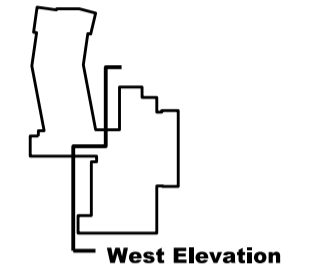
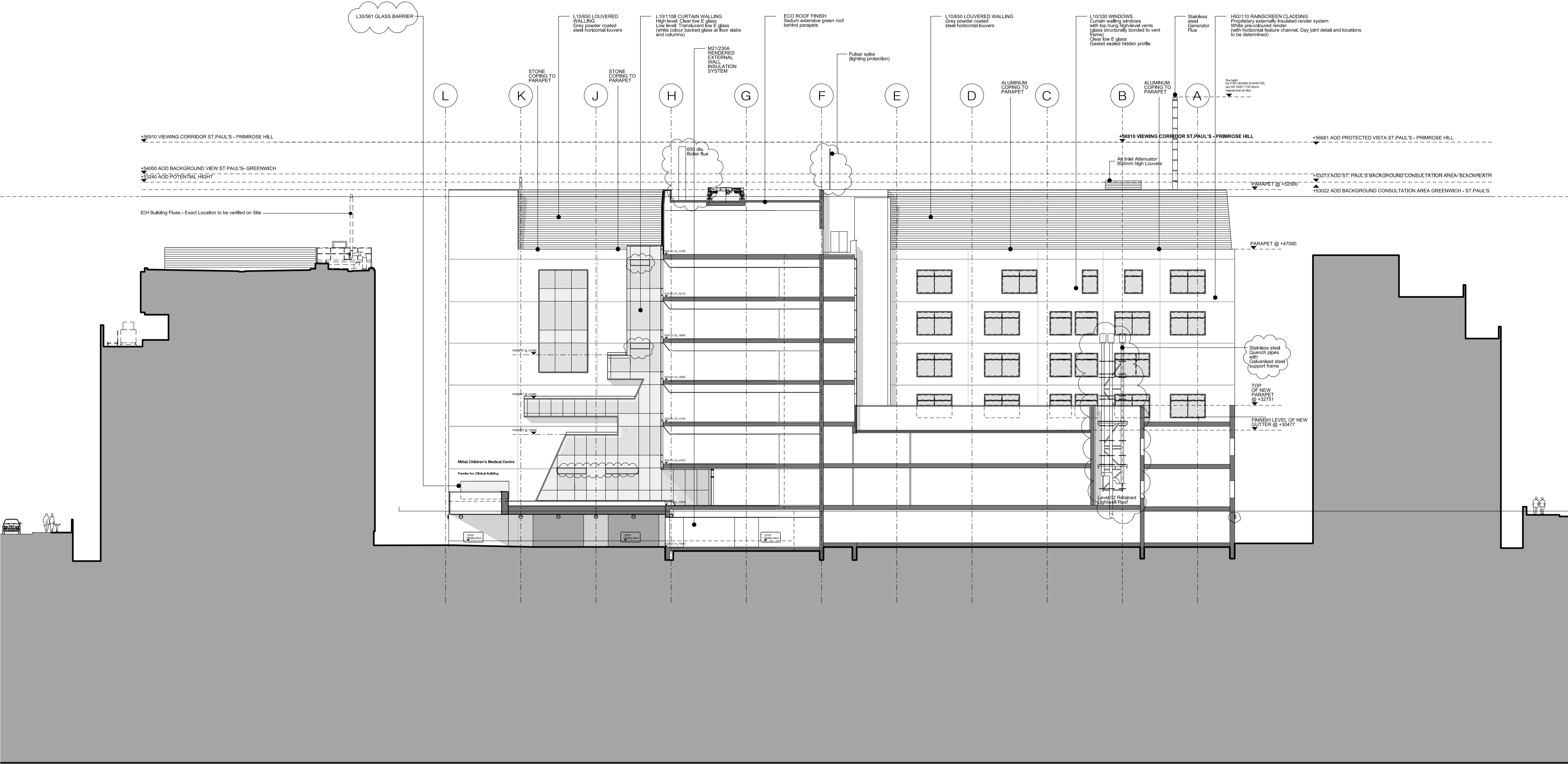


- All dimensions to be checked on site
- Do not scale off this drawing
- All dimensions are shown in mm unless otherwise stated
- Refer to drawing issue sheet for purpose of issue
- If in doubt ask
- © Lewelyn Davies Weeks Ltd.

Notes
 Read in conjunction with original approved drawing number: E_2AB_E2
 Original planning application: 2007/4116/P

refer to plans and sections for details of balustrades and BMU tracking arrangements



C9	Issued under DCR A-125 for approval	05.11.15	NR
C8	Issued under DCR A-076 for approval. Issued for concurrent planning approval of details of plant etc. (discharge of Condition 8) and Non Material Amendments (minor changes to elevations)	08.07.15	NR
C7	Issued under DCR A-072 for approval	18.06.15	NR
C6	Issued under DCR A-071 for approval	16.06.15	NR
C5	Issued under DCR A-069 for approval	15.06.15	NR
C4	Changes from original planning application highlighted with clouds for RACP 0019 approval	13.05.15	NR
The following changes are listed below -minor adjustments to mullion position between grids K & H -notes added			
C3	Louvers added; Pre-Application review	20.11.14	JD
C2	Amended Mullion positions in accordance with internal room changes Updated Level 2 Courtyard terrace in accordance to RFI B/40 Updated Quench pipes in accordance with RFI F/45	28.07.14	MN
C1	Added Generator Flue in accordance to RFI F/45 (Subject to planning permission approval) Construction Issue	26.05.14	MN
T4	Updated for Disney imaginaires	09.04.14	ZL
T3	Glass Specification Update	23.01.14	AMA
T2	Glass NBS Refs Added	05.09.13	AMA
T1	Updated for Tender Issue Drawing Updated to GOSH Comments	17.01.13	AA
04	Drg no changed and road level raised	19.09.12	MG
03	drawing updated to GOSH comments	07.09.11	AA
02	Elevation updated	26.05.11	AA
01	Windows and Parapet revised	12.05.11	AA
A	Windows Revised	29/03/11	GH
No.	Description	Date	By
Revisions			

Structural Consultant	Services Consultant
WSP	WSP
Project Manager	Cost Consultant
CT	CT
Project Title	

Great Ormond Street Hospital
 Phase 2 B

Client
 Great Ormond Street Hospital for Children

Drawing Title
 WEST ELEVATION
 2015 update

Drawing Number 00_2B_E_W
 Revision C9

Scale @ A1
 A1_1:200 - A3_1:400
 Date

Architects