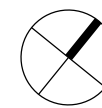


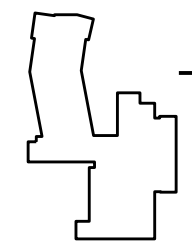
North



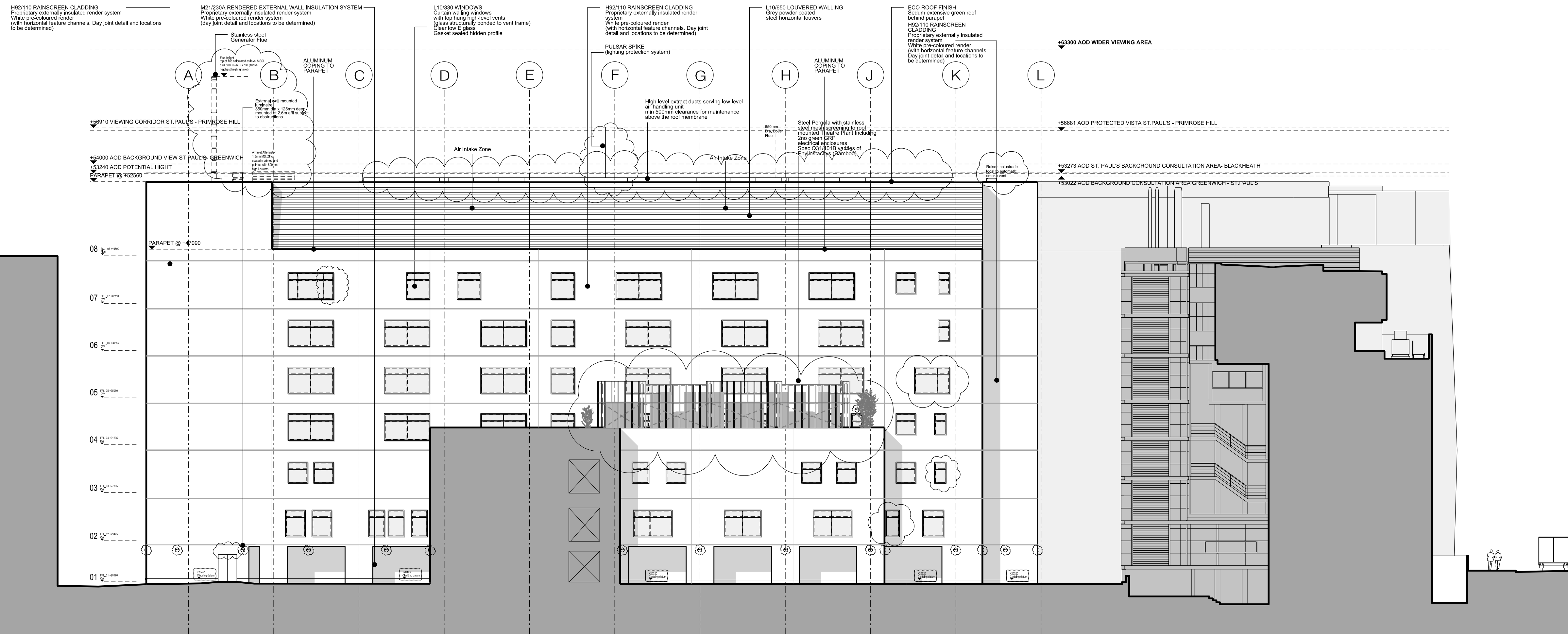
- All dimensions to be checked on site
- Do not scale off this drawing
- All dimensions are shown in mm unless otherwise stated
- Refer to drawing issue sheet for purpose of issue
- If in doubt ask
- © Llewelyn Davies Weeks Ltd.

Notes

Refer to plans and sections for details of balustrades and BMU tracking arrangements



East Elevation



C7	Issued under DCR A-125 for approval	05.11.15	NR
C6	Issued under DCR A-076 for approval. Issued for concurrent planning approval of details of plant etc (discharge of Condition 8) and Non Material Amendments (minor changes to elevations)	06.07.15	NR
C5	Issued under DCR A-071 for approval	16.05.15	NR
C4	Issued under DCR A-069 for approval	15.06.15	NR
C3	Changes from original planning application highlighted with clouds for RACP 0019 approval	13.05.15	NR
The following changes are listed below -horizontal feature channels added to echo Phase 2A -notes added			
C2	Pre-Application Review	20.11.14	JD
C1	Added Generator Flue in accordance to RFI F/45 (Subject to planning permission approval) Construction Issue	26.05.14	MN
T2	Glass NBS Refs and Change IDT18 Added	05.09.13	AMA
T1	Updated for Tender Issue Drawing Updated to GOSH Comments	17.01.13	AA
04	Drg no changed from E_2B_E	19.09.12	MG
03	drawing updated to WSP comments	14.05.12	AA
02	drawing updated to GOSH comments	07.09.11	AA
01	Windows, Parapets revised	12.05.11	AA
A	Windows revised	29/03/11	GH
No.	Description	Date	By
Revisions			

Structural Consultant Services Consultant



Project Manager



Project Title



Cost Consultant



Great Ormond Street Hospital
Phase 2 B

Client

Great Ormond Street
Hospital for Children
NHS Trust

Drawing Title

EAST ELEVATION
2015 Update

Drawing Number Revision
00_2B_E_E C7

Scale @ A1
A1_1:200 - A3_1:400

Date

Architects

LLEWELYN
DAVIES

Architects | Planners | Designers
www.ldavies.com