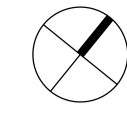


North

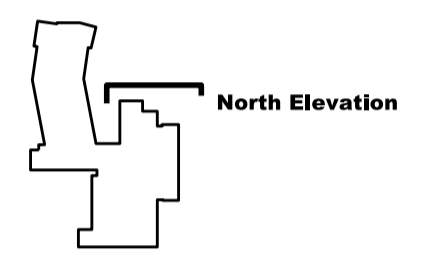
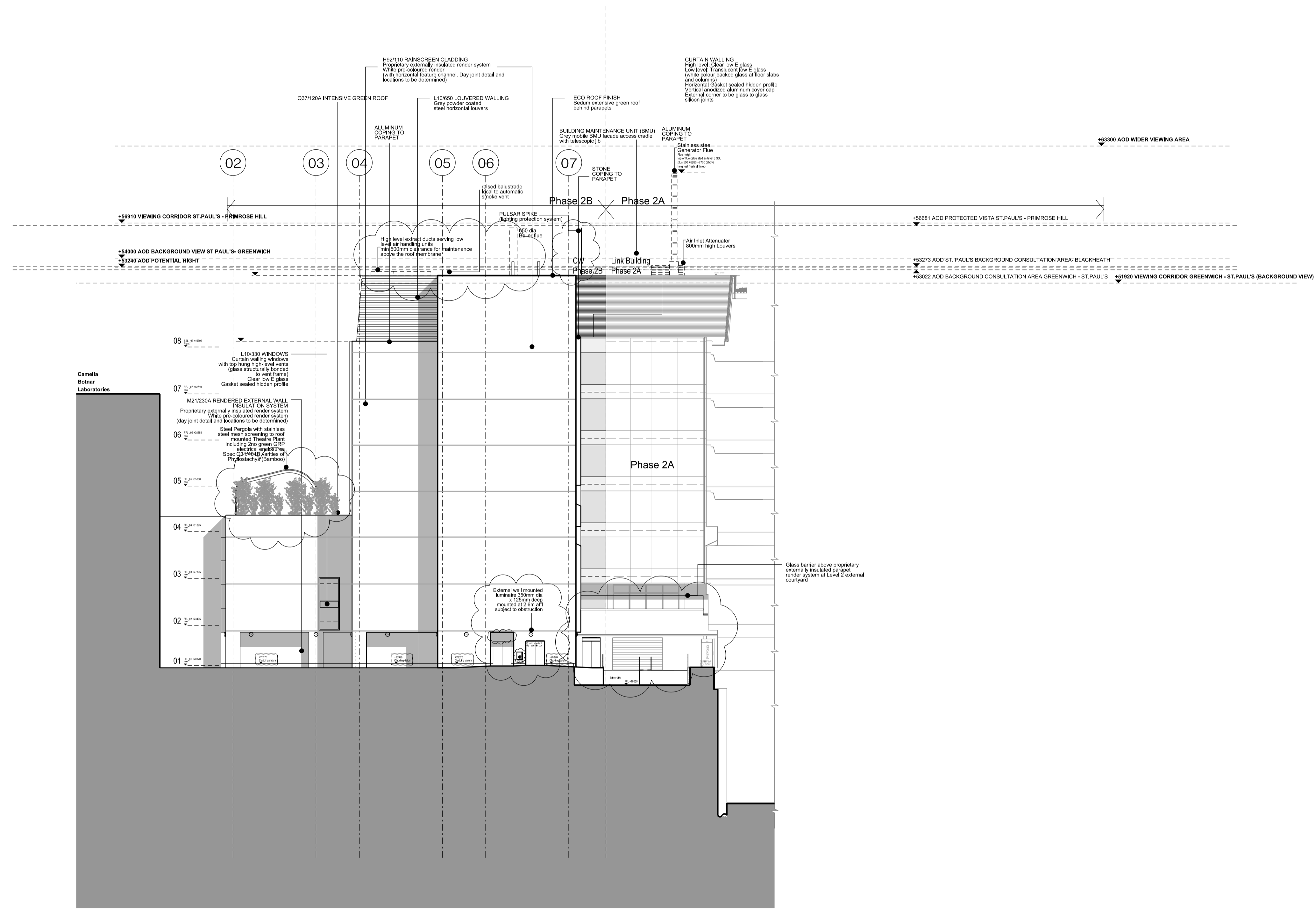


- All dimensions to be checked on site
- Do not scale off this drawing
- All dimensions are shown in mm unless otherwise stated
- Refer to drawing issue sheet for purpose of issue
- If in doubt ask
- © Lewelyn Davies Weeks Ltd.

Notes

Read in conjunction with original approved drawing number: E\_2AB\_N3  
Original planning application : 2007/4116/P

refer to plans and sections for details of balustrades and BMU tracking arrangements



C8	Issued under DCR A-125 for approval	05.11.15	NR
C7	Issued under DCR A-119 for approval	26.10.15	NR
C6	Issued under DCR A-076 for approval. Issued for concurrent planning approval of details of plant etc (discharge of Condition 8) and Non Material Amendments (minor changes to elevations)	06.07.15	NR
C5	Issued under DCR A-071 for approval	16.06.15	NR
C4	Issued under DCR A-069 for approval	15.06.15	NR
C3	Changes from original planning application highlighted with clouds for RACP 0019 approval	13.05.15	NR
The following changes are listed below			
-horizontal feature channels added to echo Phase 2A			
-notes added			
C2	Louvers amended for Pre-Application review	20.11.14	JD
C1	Added Generator Flue in accordance to RFI F/45 (Subject to planning permission approval)	26.05.14	MN
T4	Updated for Disney imaginars	10.04.14	ZL
T3	Glass Specification Updated	23.01.14	AMA
T2	Glass NBS Refs Added	05.09.13	AMA
T1	Updated for Tender Issue	17.01.13	AA
02	Drg no updated	16.08.12	MG
01	drawing updated to GOSH comments	07.09.11	AA

No.	Description	Date	By
-----	-------------	------	----

Structural Consultant	Services Consultant
WSP	WSP
Project Manager	Cost Consultant
CT	CT
Project Title	

Great Ormond Street Hospital  
Phase 2 B

Client  
Great Ormond Street Hospital for Children

Drawing Title  
NORTH ELEVATION  
2015 update

Drawing Number	Revision
00_2B_E_N	C8

Scale @ A1  
A1\_1:200 - A3\_1:400  
Date

Architects



Architects | Planners | Designers  
www.ldavies.com