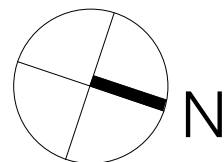
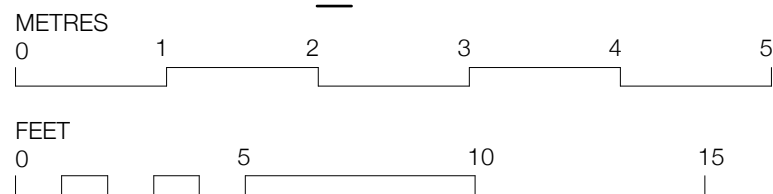
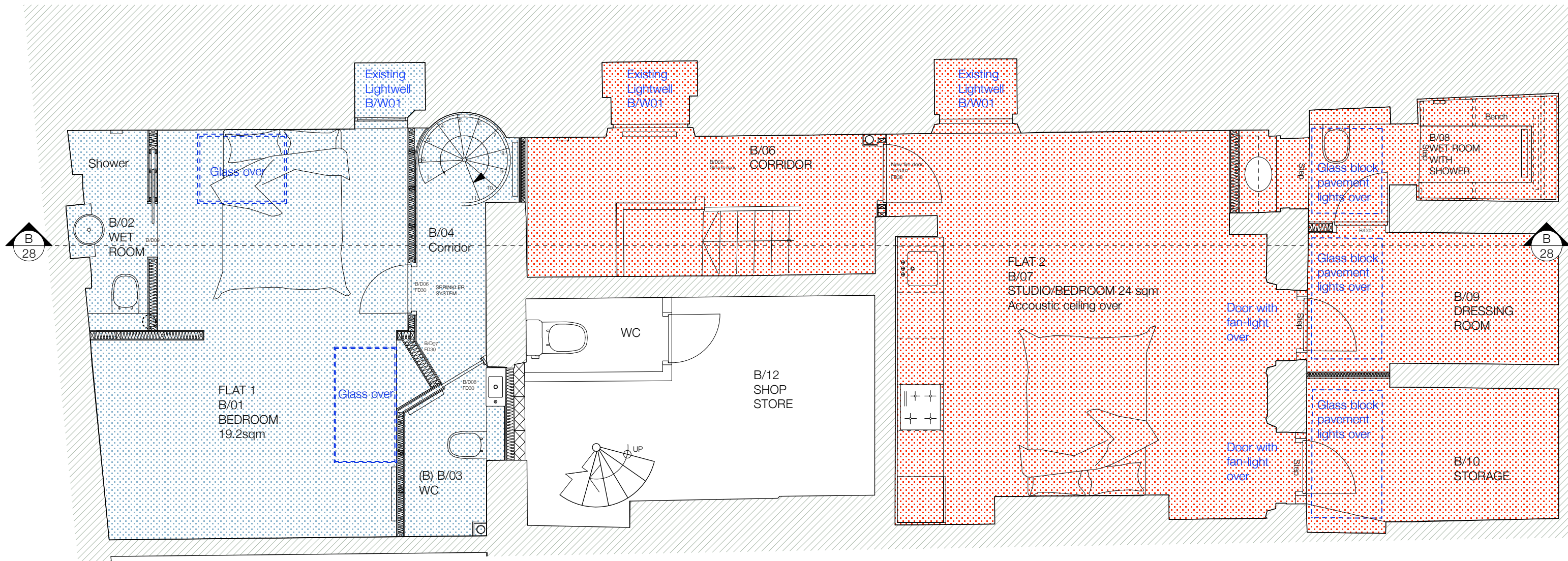


BASEMENT AS PROPOSED  
1:50 A3



PLANNING

Status

39 GREAT RUSSELL STREET

Mowbray Crawshaw Architects LLP

Studio 105, Curtain House, 134-146 Curtain Rd, London, EC2A 3AR  
tel: +44 (0)20 7033 3484

Title

BASEMENT AS PROPOSED

Drawing Number

055 SKD 21

Drawn	Checked	Scale	Date	Revision
AC		1:50 at A3	07.10.15	A