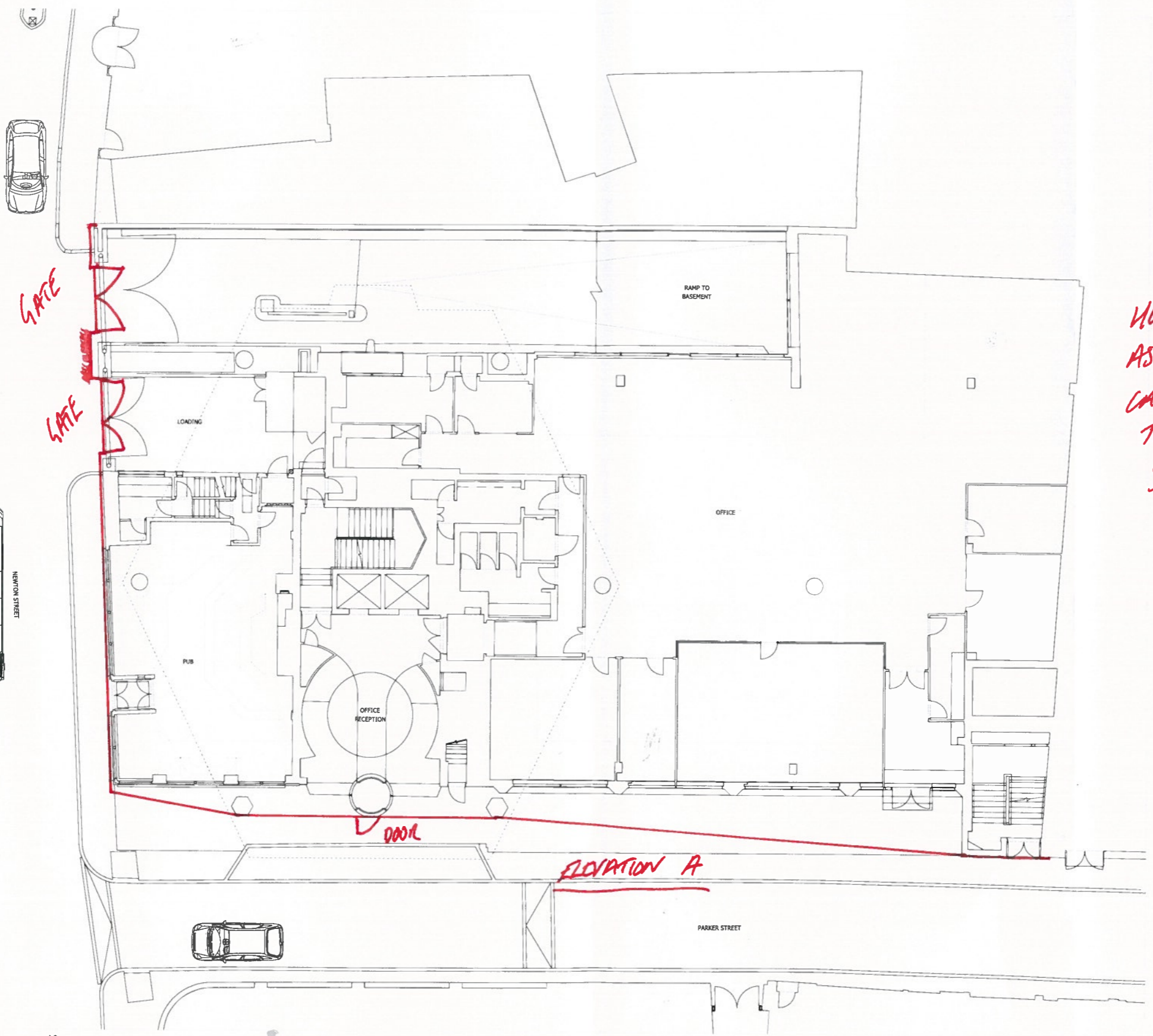


NOTES:
 DO NOT SCALE FROM THIS DRAWING.
 ALL DIMENSIONS TO BE CHECKED ON SITE.
 ALL OMISSIONS AND DISCREPANCIES TO BE REPORTED TO THE ARCHITECT IMMEDIATELY.
 ALL RIGHTS RESERVED. THIS WORK IS COPYRIGHT AND CANNOT BE REPRODUCED OR COPIED OR MODIFIED IN ANY FORM OR BY ANY MEANS, GRAPHIC ELECTRONIC OR MECHANICAL, INCLUDING PHOTOCOPYING WITHOUT THE WRITTEN PERMISSION OF SQUIRE AND PARTNERS ARCHITECTS.

ELEVATION B



HOARDING LINE
 AS APPROVED BY
 CAMDEN HIGHWAYS
 TEAM.
 SEPTEMBER 2015.

Issued For Planning	19/12/13	JD	-
Revision description	Date	Check	Rev

Squire and Partners

77 Wicklow Street London WC1X 9JY
 T: 020 7278 5555 F: 020 7239 0495

info@squireandpartners.com
 www.squireandpartners.com

Project
 Parker Tower

Drawing
 Existing Site
 Ground Floor

Drawn	Date	Scale
DK	10/10/2013	1: 100@A1 1: 200@A3
Job number	Drawing number	Revision
11055	P_00_JA12_001	-

Approximate dimensions

A DEVELOPMENT BY  **BNP PARIBAS** 438mm

146mm

423mm **COMING SOON**

675mm **ICONIC COVENT GARDEN LIVING**

196mm **HEXAGONAPARTMENTS.COM** +44 (0) 207 484 8190

 **BNP PARIBAS REAL ESTATE**
(UK and Europe only)

AGENTS  **savills** 655mm
(Worldwide)

ELEVATION A



ELEVATION B



Signcraft
Assessing. Building. Brands.

Specification sheet

Customer: Heritage Agency
 Item: Signage
 Date: 01.10.18
 Job Code: 1801
 Our Contact: sales@signcraft.co.uk

11/18

This sheet is a guide only. It is not intended to be used as a contract. It is the responsibility of the client to ensure that the signage is suitable for the intended use and that it complies with all relevant regulations. Signcraft is not responsible for any damage to property or injury to persons caused by the use of the signage.