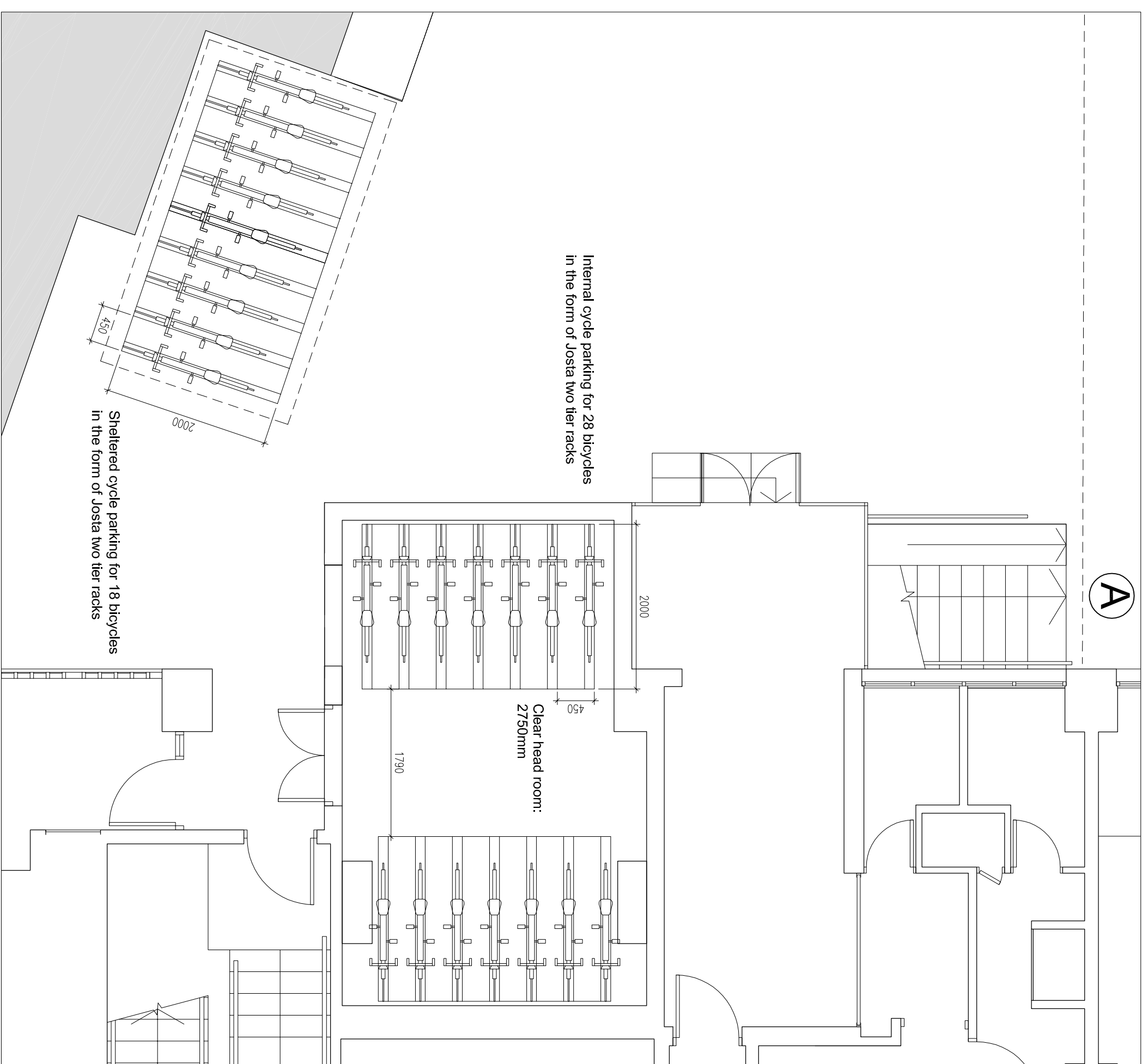
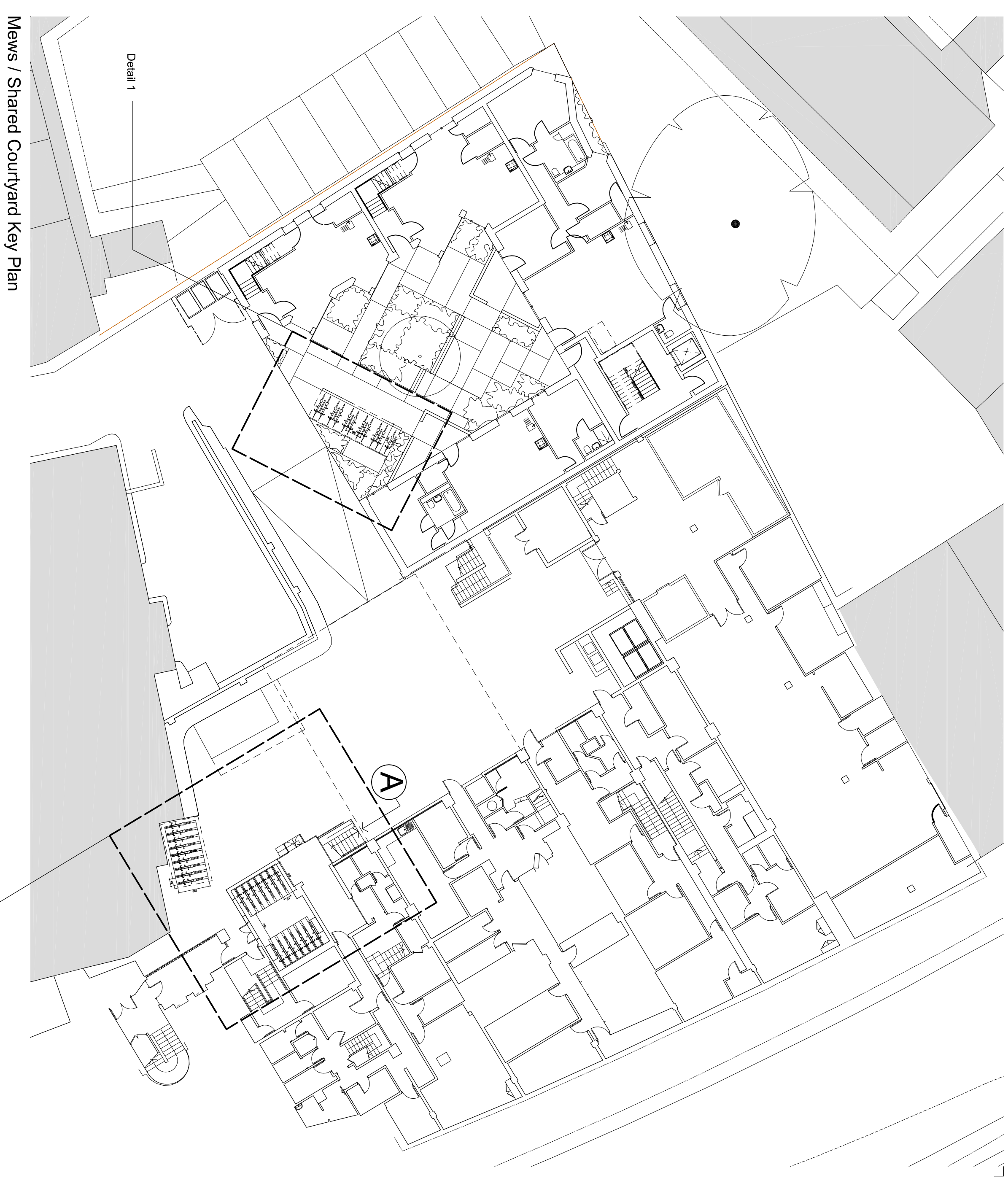


Detail 1 - Cycle Parking in Mews Courtyard

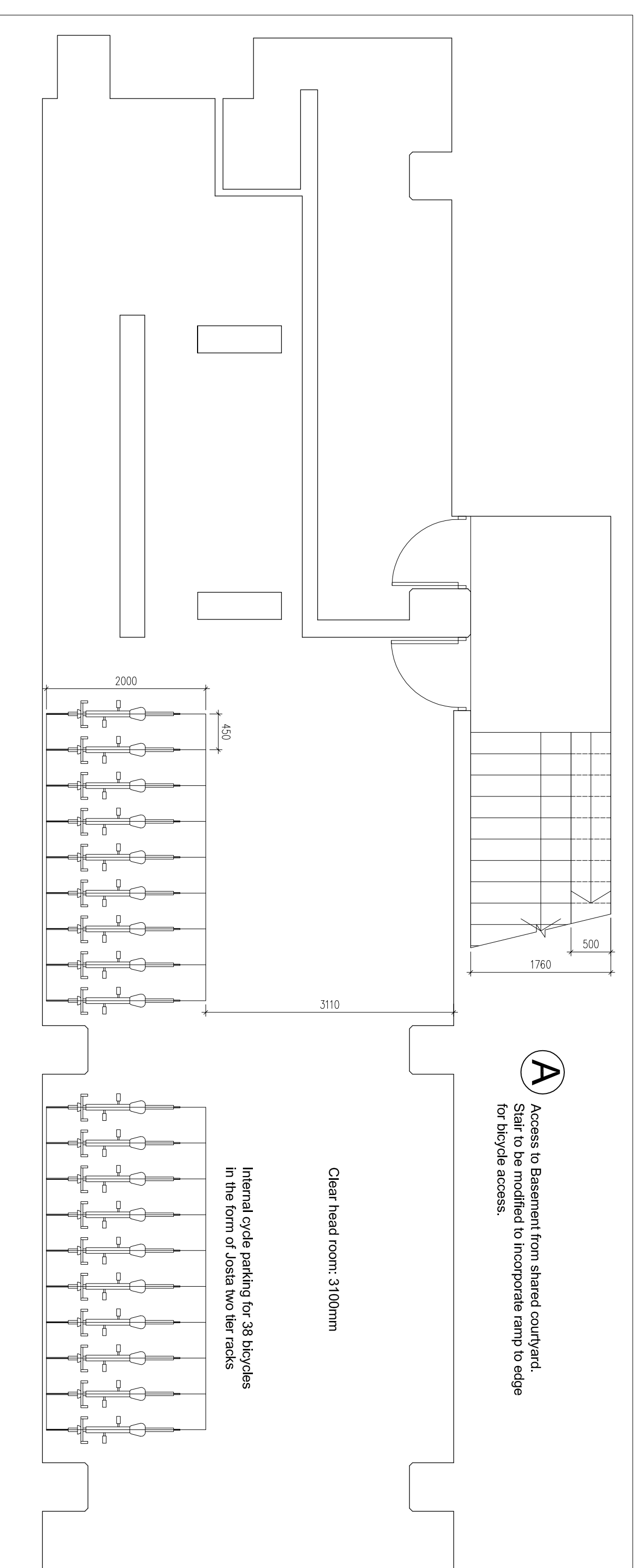
Access to Basement from shared courtyard. Stair to be modified to incorporate ramp to edge for bicycle access.



Detail 2 - Cycle Parking in Lower Ground Floor



Mews / Shared Courtyard Key Plan



Detail 3 - Cycle Parking in Basement

# Centre Heights

## Finchley Road

**standard notes**

1. Do not scale this drawing.
2. All dimensions must be checked on site and any discrepancies verified with the architect.
3. Unless stated otherwise, all dimensions are to structural surfaces.

THIS IS NOT A CONSTRUCTION DRAWING. IT IS UNSUITABLE FOR THE PURPOSE OF CONSTRUCTION AND MUST ON NO ACCOUNT BE USED AS SUCH.

**drawing notes**

**revisions**

P1	08.09.2015	ISSUED FOR PLANNING
----	------------	---------------------

<b>date</b>	08/09/15	<b>client</b>	Anaspel Ltd
<b>scale</b>	1:200/1:50@A1	<b>drawing</b>	Proposed Cycle Parking Provision
<b>drawn</b>	JC	<b>checked</b>	NJ
<b>drawing number</b>	3073 - L - 0400	<b>rev</b>	P1

Levitt Bernstein  
1 Kingsland Passage  
London  
E8 2BS  
t: 020 7273 7678  
m: 07793 826146  
e: post@levittbernstein.co.uk

Levitt Bernstein