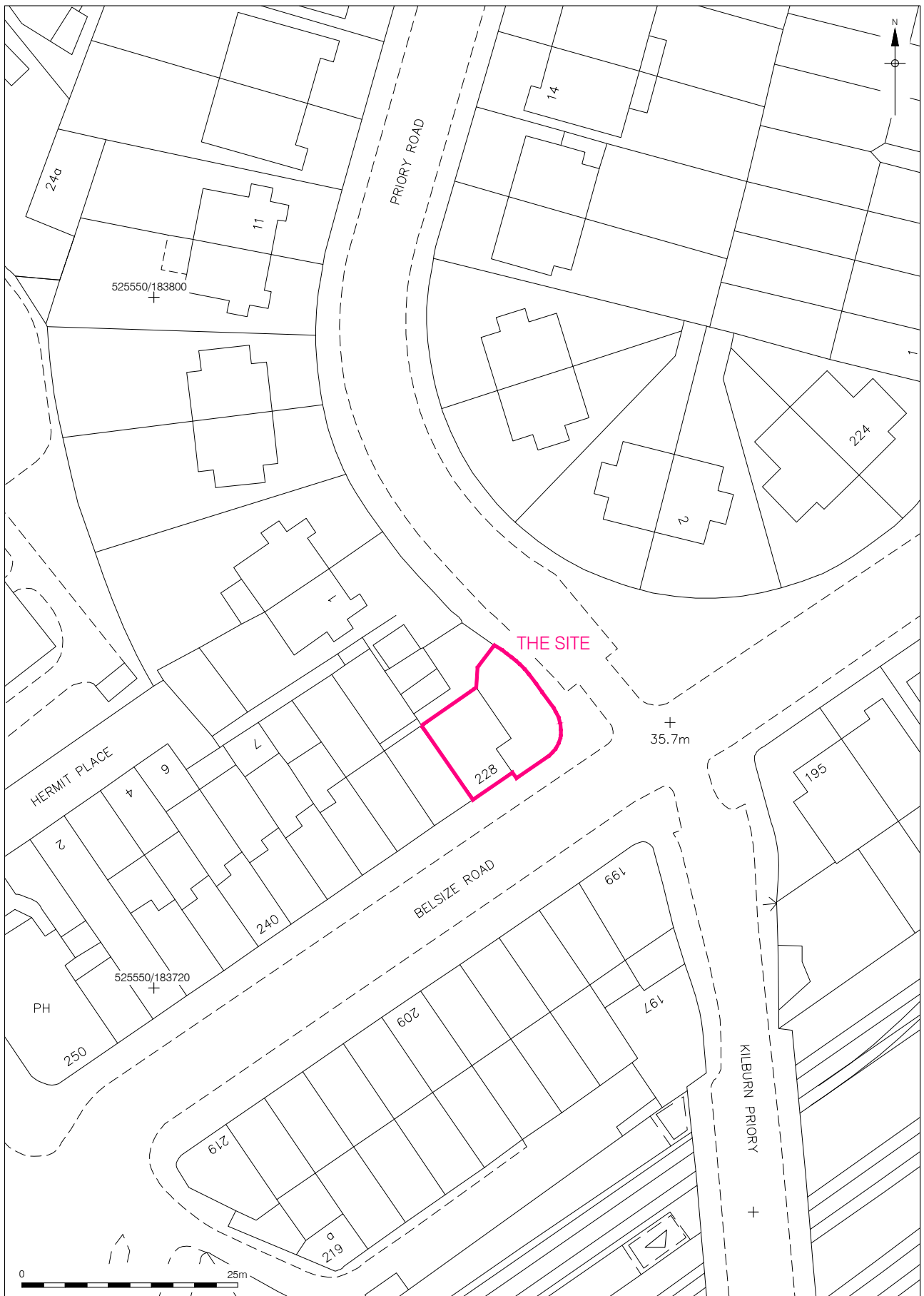


© Crown copyright 2006. All rights reserved. License number 36110309

© Pre-Construct Archaeology Ltd 2015

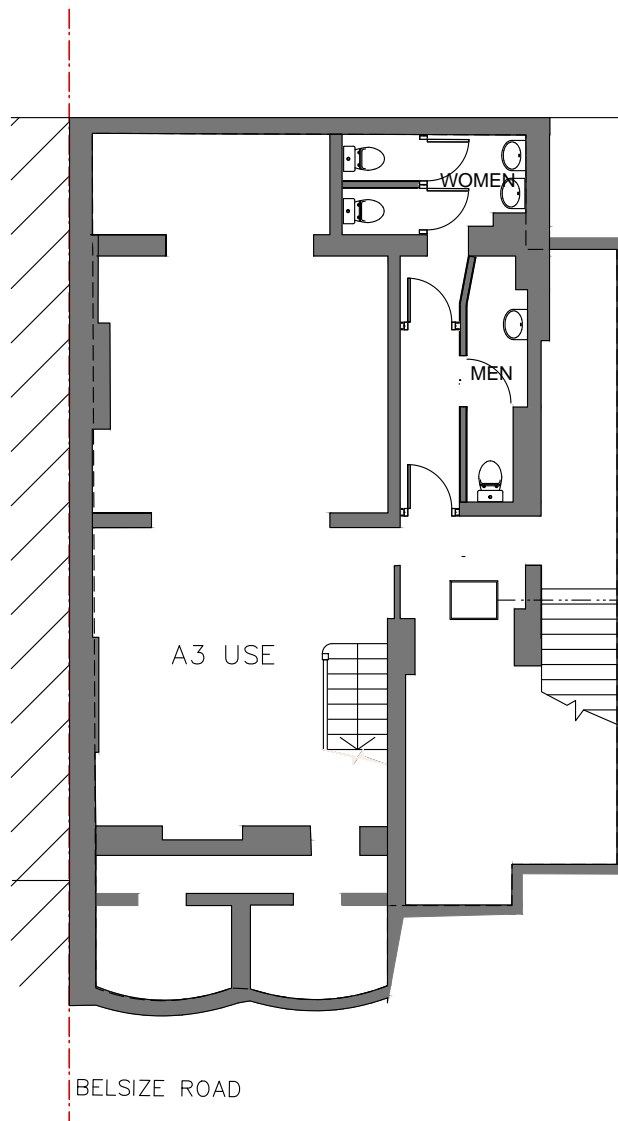
24/03/15 HB

Figure 1
Site Location
1:20,000 at A4



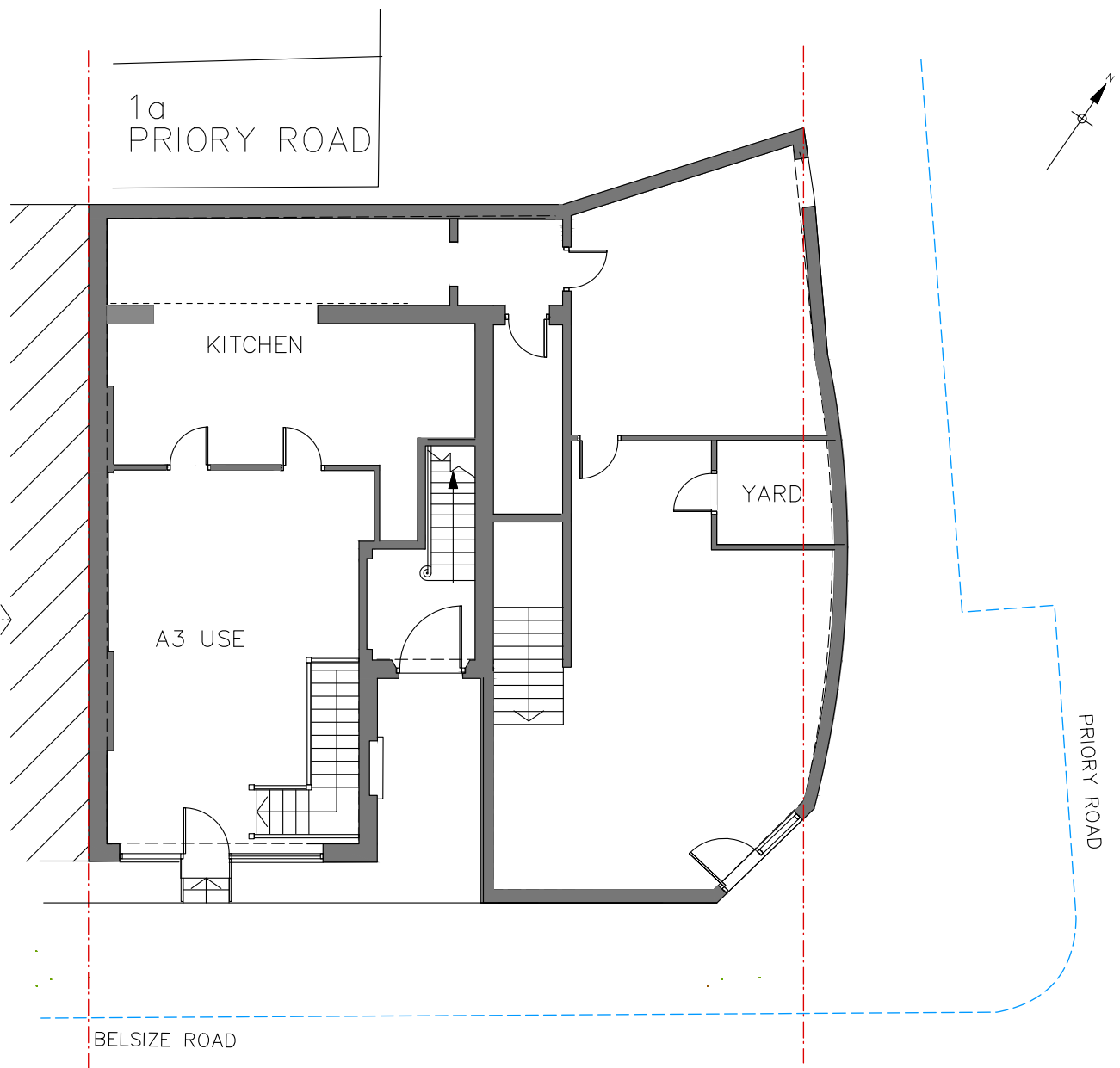
© Crown copyright 2015. All rights reserved. License number PMP36110309
 © Pre-Construct Archaeology Ltd 2015
 24/03/15 HB

Figure 2
 Detailed Site Location
 1:625 at A4



BASEMENT FLOOR PLAN

113.42 sq.m. gross floor area



GROUND FLOOR PLAN

162.44 sq.m. gross floor area

0 5m

Based on drawing no. 2014/228BP/E1 supplied by Joseph Rogic, 2015

© Pre-Construct Archaeology Ltd 2015

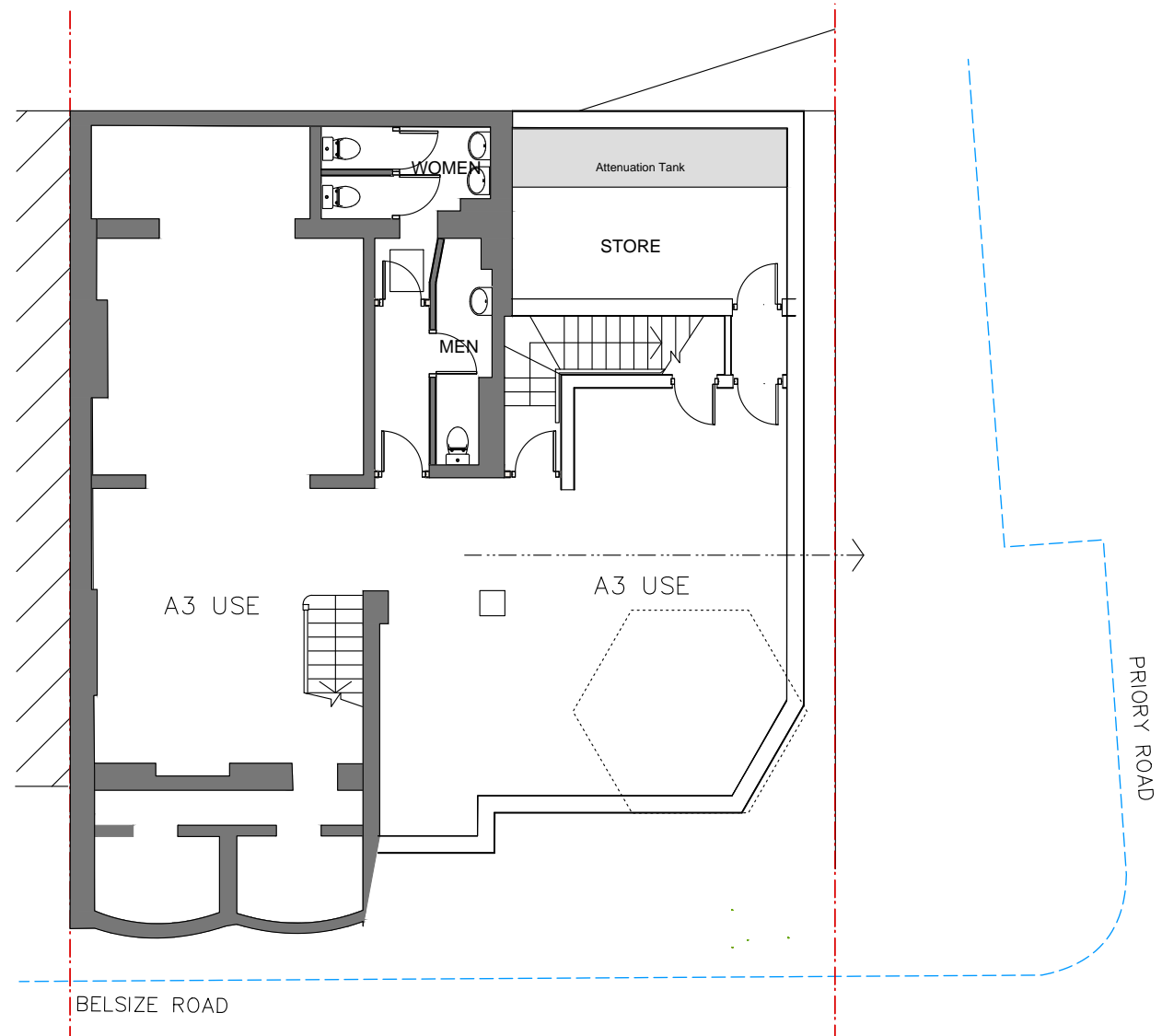
25/03/15 HB

Figure 3
Existing Basement & Ground Floor Plan
1:125 at A4

LEGEND

- Existing retained
- New work

ALL GIVEN FLOOR AREAS INCLUDE
INTERNAL PARTITIONS AND CHIMNEY
BREAST, BUT EXCLUDE EXTERNAL
WALLS.



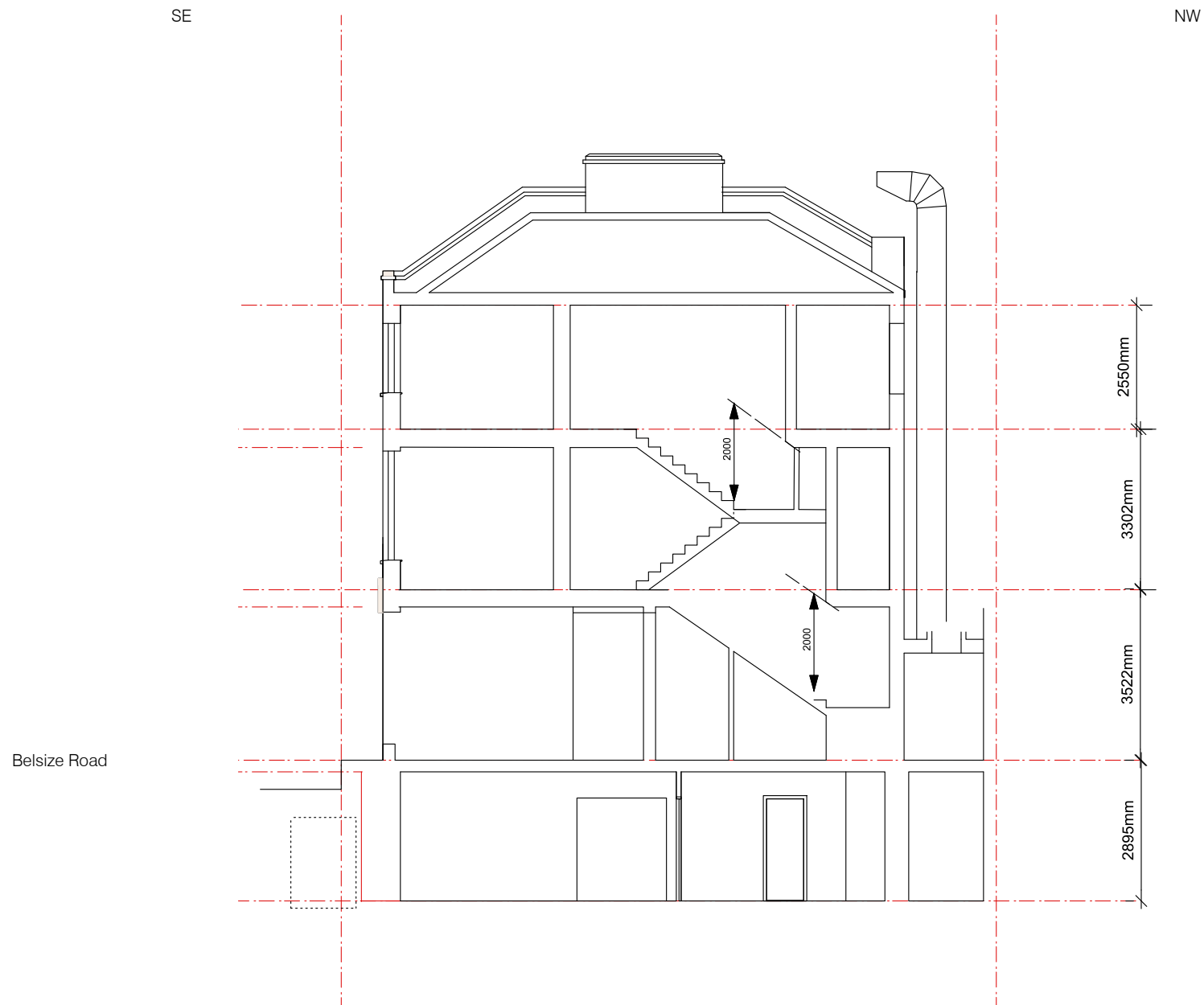
BASEMENT FLOOR PLAN

158.73 sq.m. gross floor area

0 5m

Based on drawing no. 2014/228BP/P1 supplied by Joseph Rogic, 2015
© Pre-Construct Archaeology Ltd 2015
25/03/15 HB

Figure 4
Proposed Basement Floor Plan
1:125 at A4



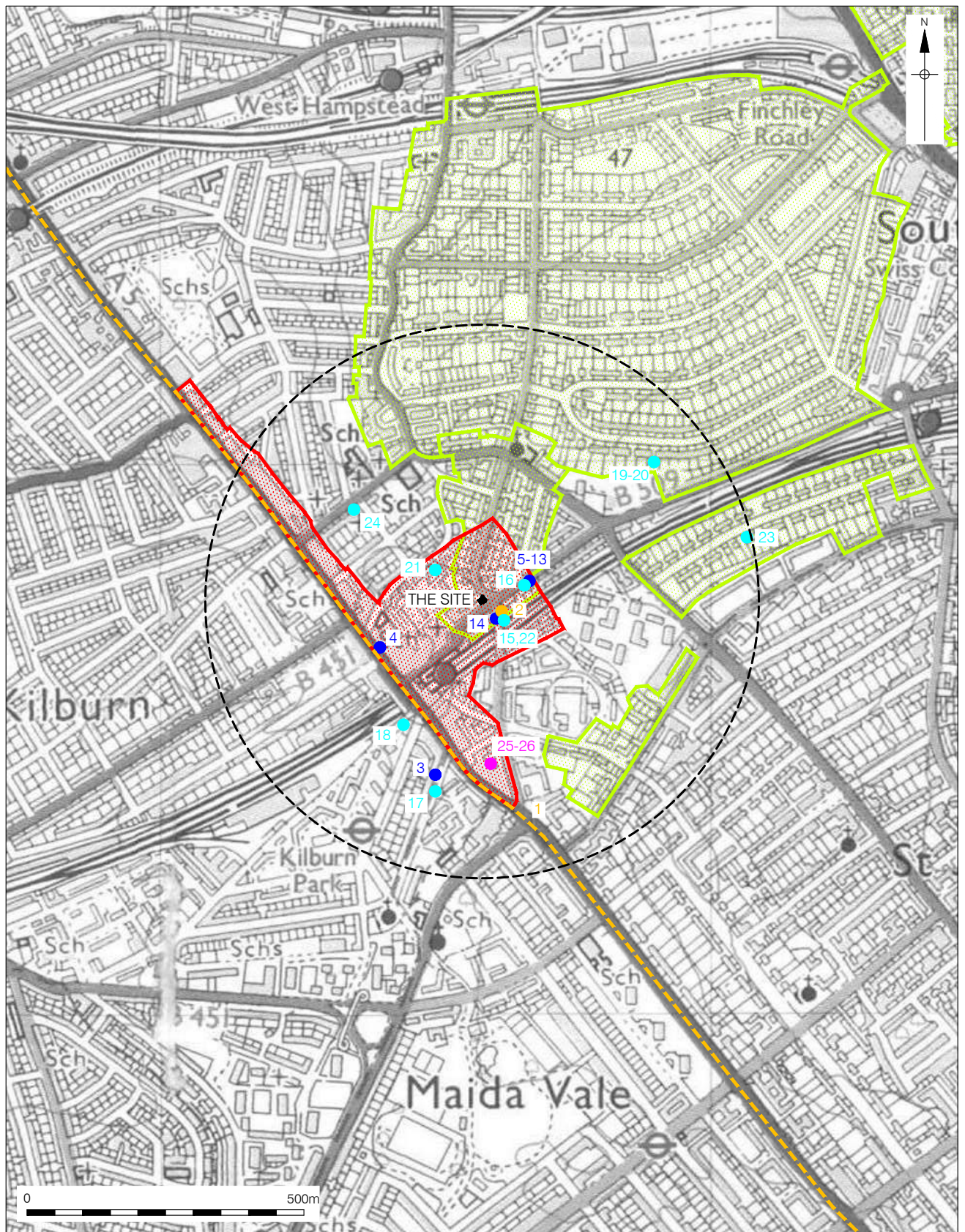
0 5m

Based on drawing no. 2014/228BP/P6 supplied by Joseph Rogic, 2015

© Pre-Construct Archaeology Ltd 2015

25/03/15 HB

Figure 5
Proposed Elevation
1:125 at A4



© Crown copyright 2006. All rights reserved. License number 36110309

© Pre-Construct Archaeology Ltd 2015

25/03/15 HB

- Roman Road (1)
- 500m Search Radius
- Roman (2)
- Medieval (3-14)
- Post-Medieval (15-24)
- Unknown Date (25-26)
- Archaeological Priority Area
- Conservation Area

Figure 6
GLHER Locations
1:10,000 at A4

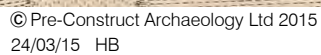


Figure 7
Rocque, 1746
approx 1:20,000 at A4

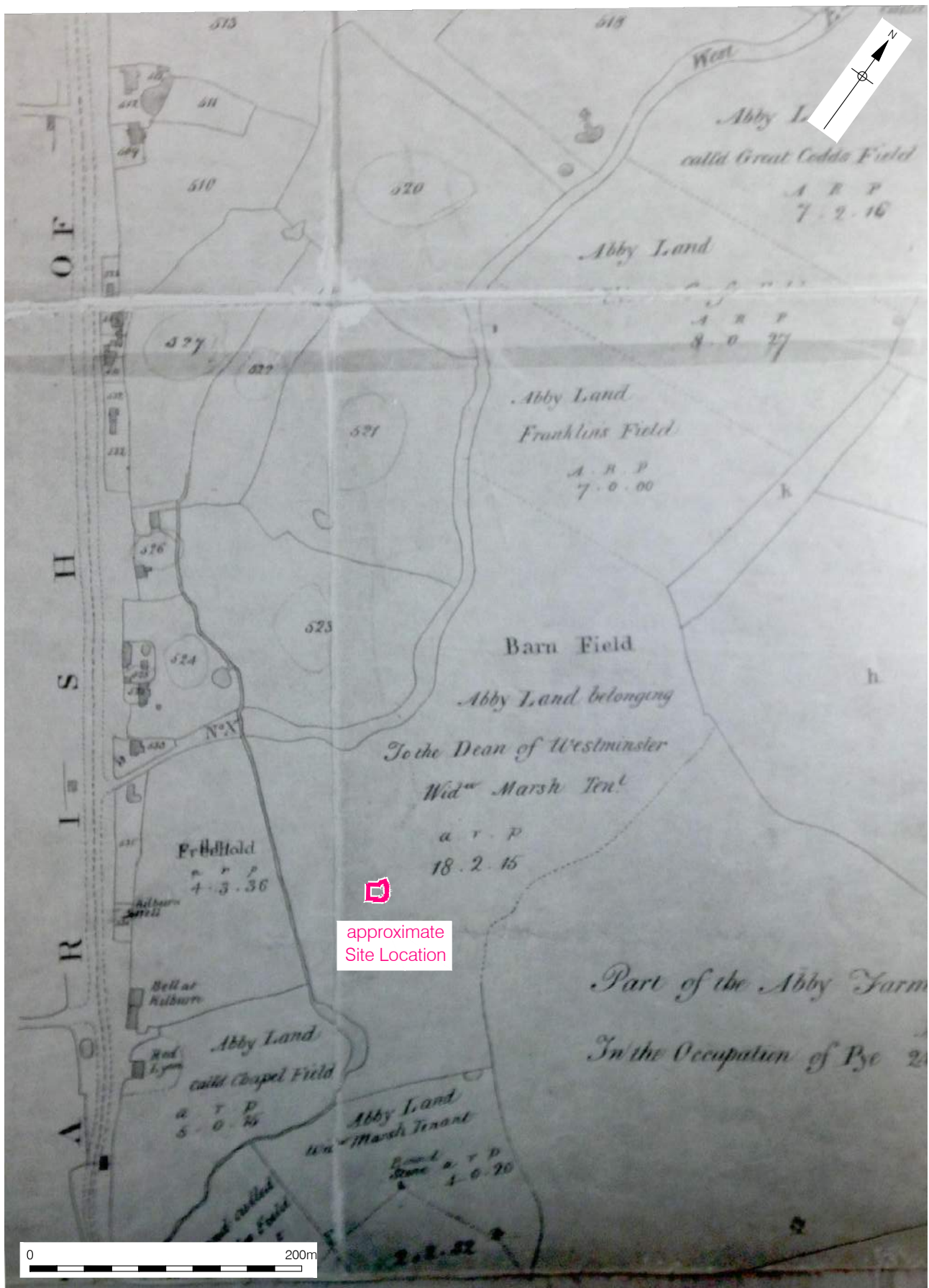


Figure 8
Hampstead Manor Map, 1762
approx 1:4,000 at A4



© Pre-Construct Archaeology Ltd 2015
24/03/15 HB

Figure 9
Cary, 1786
approx 1:20,000 at A4