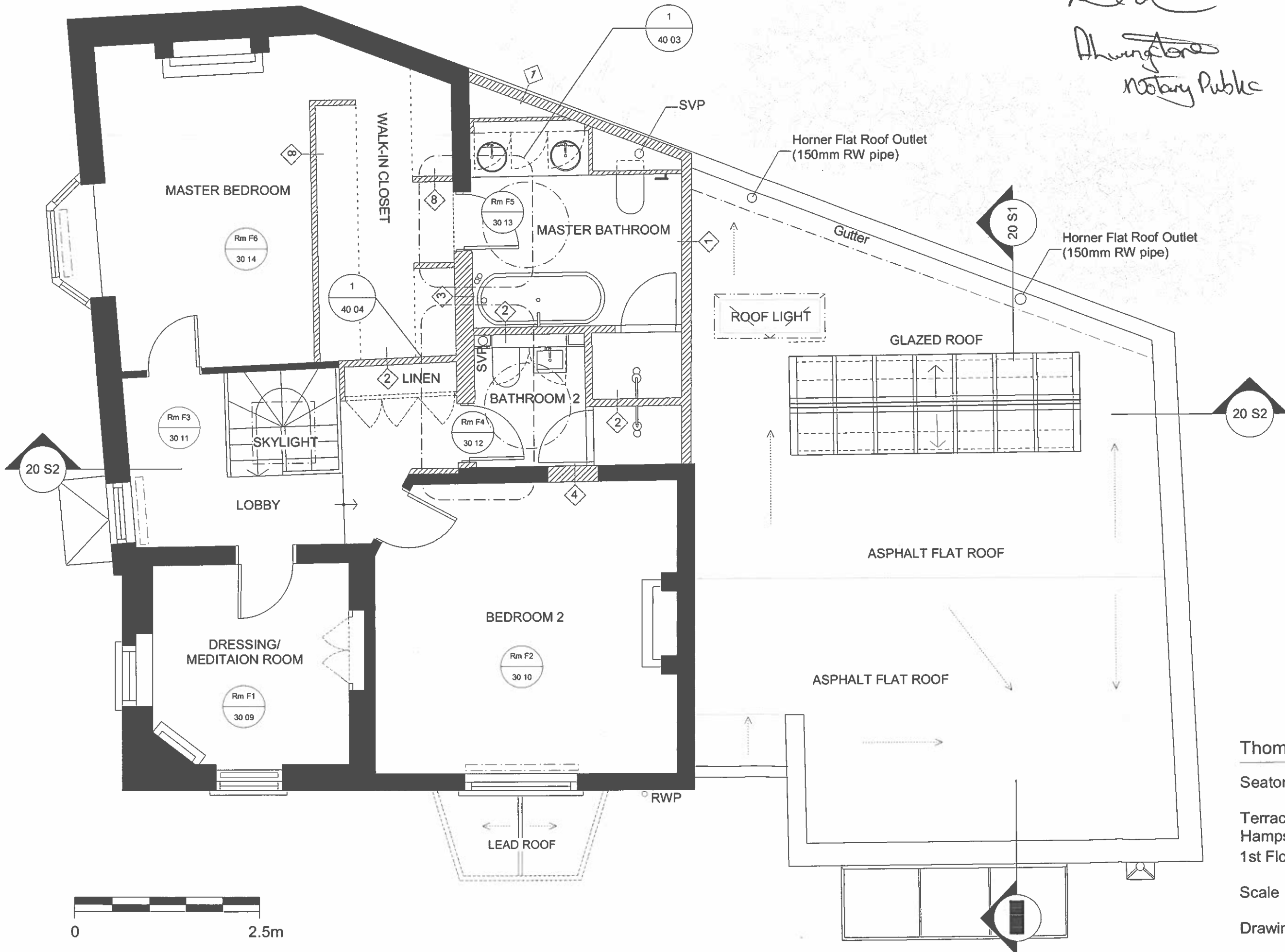


- DO NOT MEASURE FROM DRAWING
- IF IN DOUBT ASK

*ABT*  
*Anthony Brent*  
 Notary Public

Notes

- 2 Wall build up - see 40 xx



Thomas Brent Associates Ltd.

Seaton House

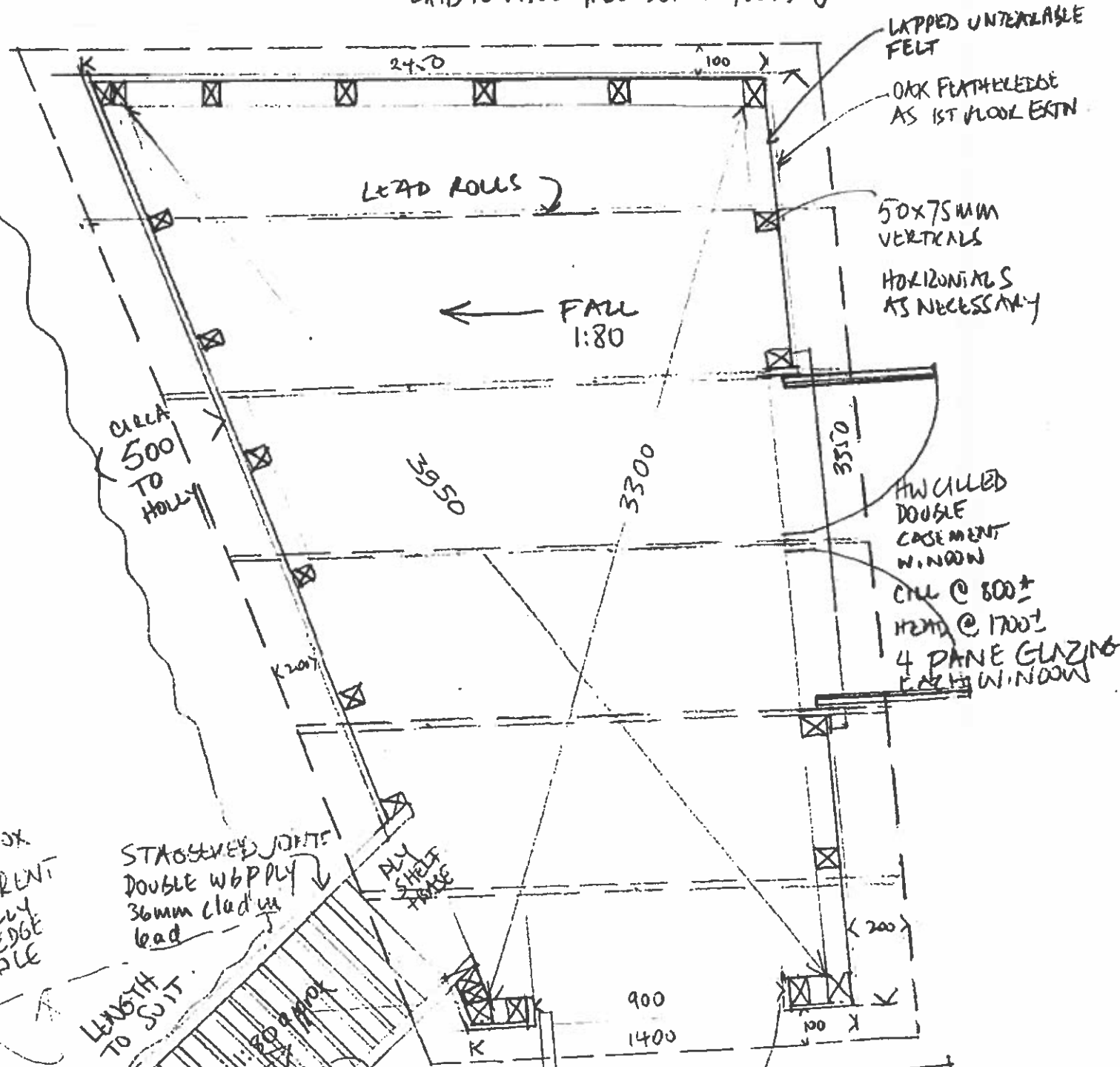
Terrace Lodge, Admirals Walk,  
 Hampstead, NW3  
 1st Floor - EXISTING / AS BUILT

Scale 1:50 @ A3

Drawing Number 20 03A

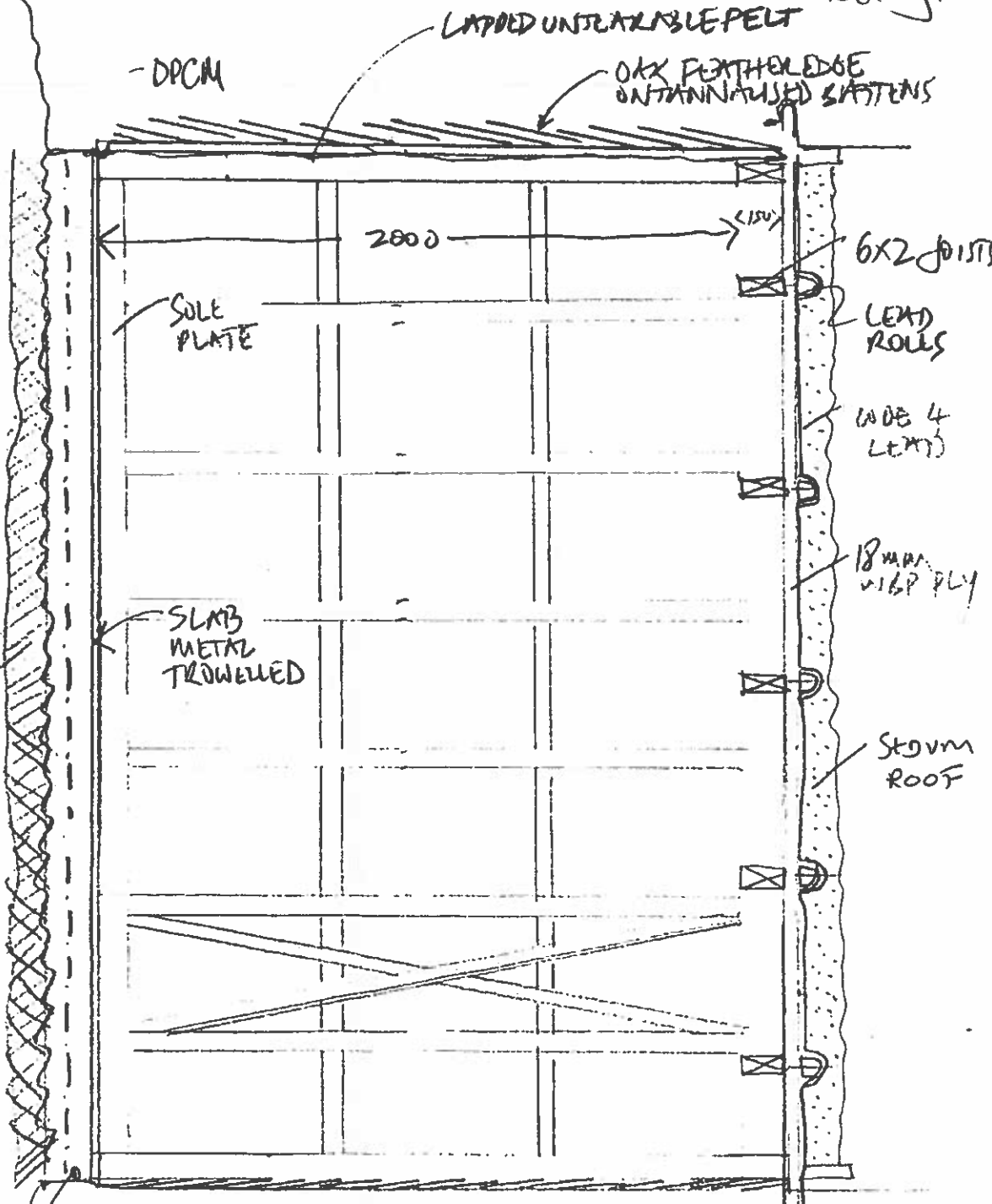
Arch.  
 Alhewstone  
 Notary Public

COVE 4 LEAD Laid OVER WBP PLY 18MM  
 Laid TO FALL 1:80 SET ON 150x50 JOISTS @ 600 C/C



PLAN

INTERNAL SECTION



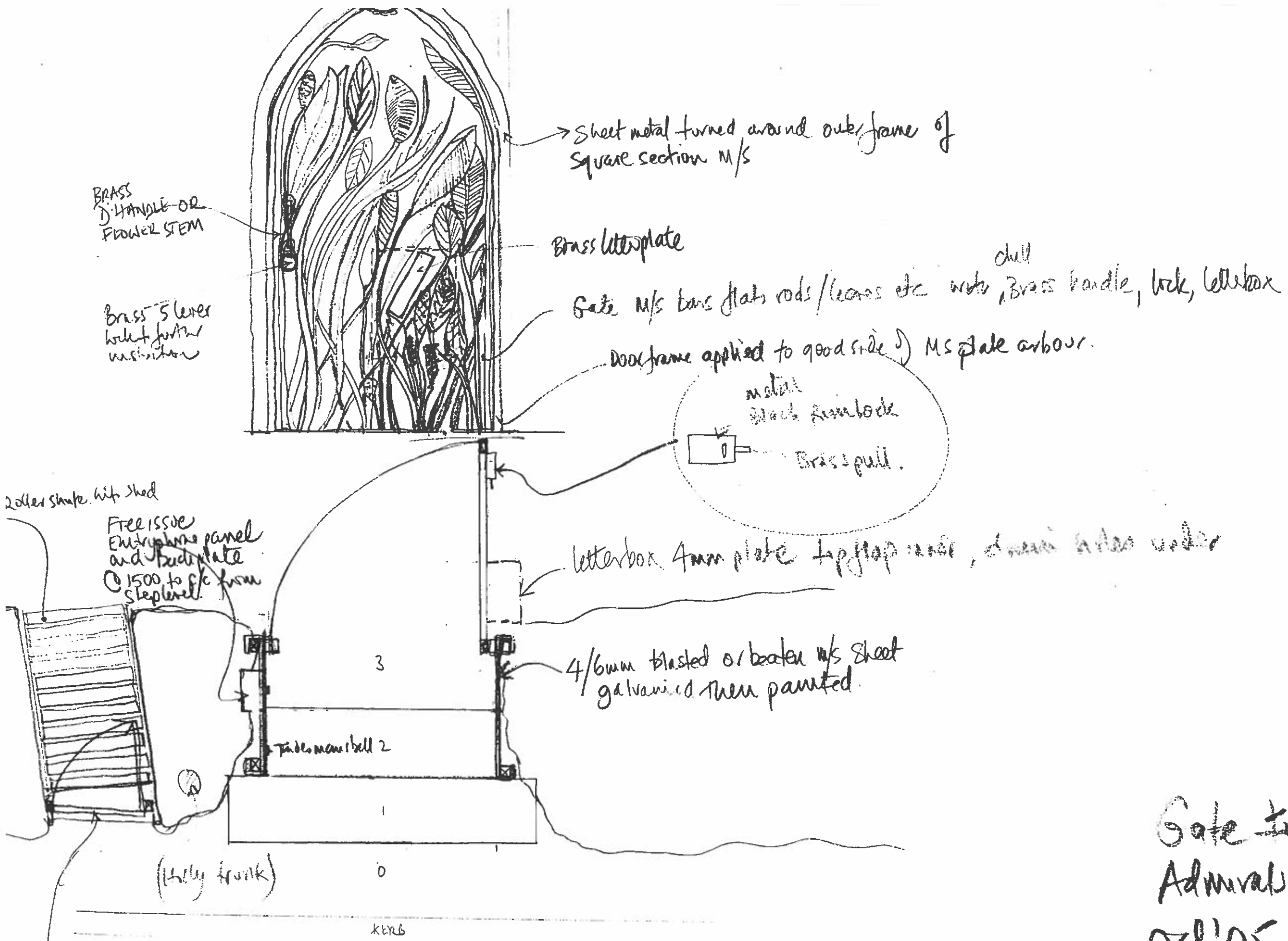
150mm conc slab F/FLOOR LEVEL AT  
 BASIC R1 MESH STEP 4 FINISH INTERNAL  
 Laid ON SAND BLINDING ON  
 BED OF HARD CORE

SCALE 1:20

TERRACE LODGE  
 SHED OCT'05  
 TRAC 02074358545  
 DWG NO 90:51

ISSUED FOR  
 info:

At  
 Alhambra  
 Notary Public



BRASS D HANDLE OR FLOWER STEM

BRASS 5 LAYER WOOD FURNER VASISTION

Sheet metal turned around outer frame of square section M/S

BRASS LETTERPLATE

Gate M/S bars flat rods / leaves etc with Brass handle, lock, letterbox

Door frame applied to good side of M/S plate arbour.

metal block handle  
BRASS pull.

Roller shutter with shed  
FREE ISSUE ENTIRE PANEL AND LETTERPLATE @ 1500 TO G/C FROM STEPLEVEL

letterbox 4mm plate top flap with door sides with

4/6mm blasted or beater M/S sheet galvanized then painted.

TRADSMAN BELL 2

(Lilly trunk)

kerb

metal flap for delivery truck, opened via tradesman bell set high over step 2

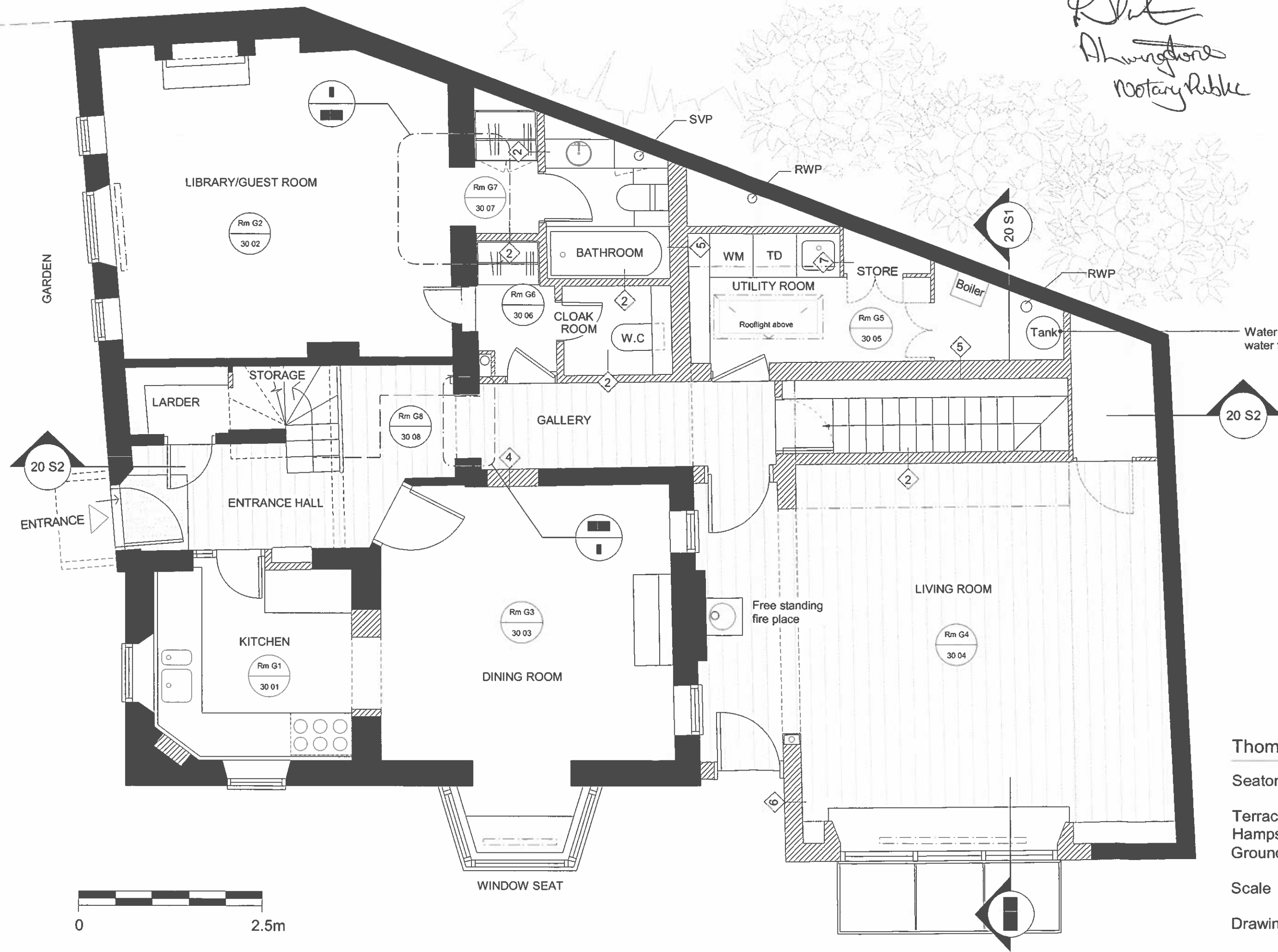
Gate to Terrace Lodge  
 Admirals Walk NW3  
 Oct '05  
 1:20

- DO NOT MEASURE FROM DRAWING
- IF IN DOUBT ASK

*Paul  
 Alvingstone  
 Rotary Club*

Notes

2 Wall build up - see 40 xx



Thomas Brent Associates Ltd.

Seaton House

Terrace Lodge, Admirals Walk,  
 Hampstead, NW3  
 Ground Floor - EXISTING / BUILT

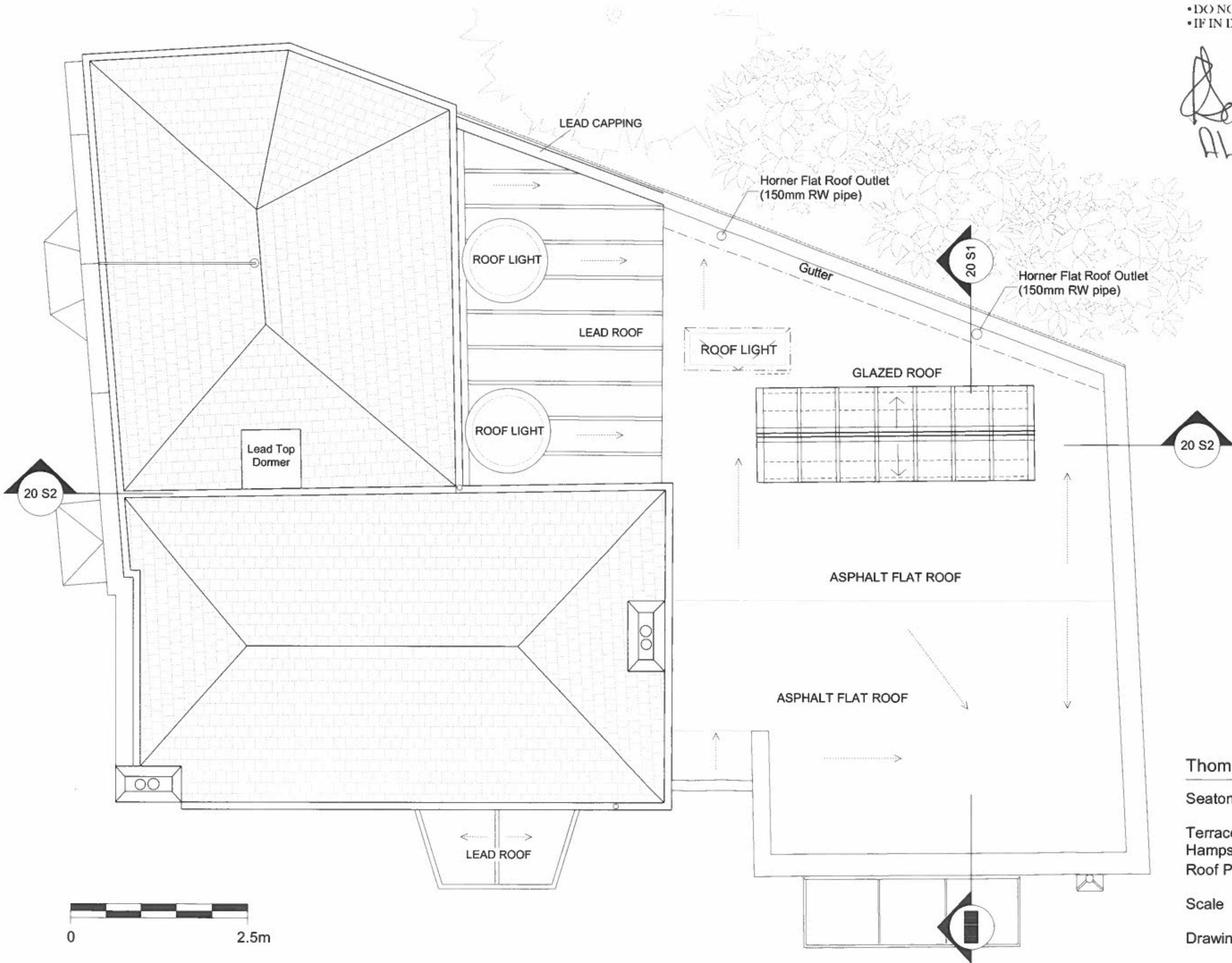
Scale 1:50 @ A3

Drawing Number 20 02A

- DO NOT MEASURE FROM DRAWING
- IF IN DOUBT ASK

Notes

*Bob*  
*A. Houghton*  
 Notary Public



Thomas Brent Associates Ltd.

Seaton House

Terrace Lodge, Admirals Walk,  
 Hampstead, NW3  
 Roof Plan - CONSTRUCTION

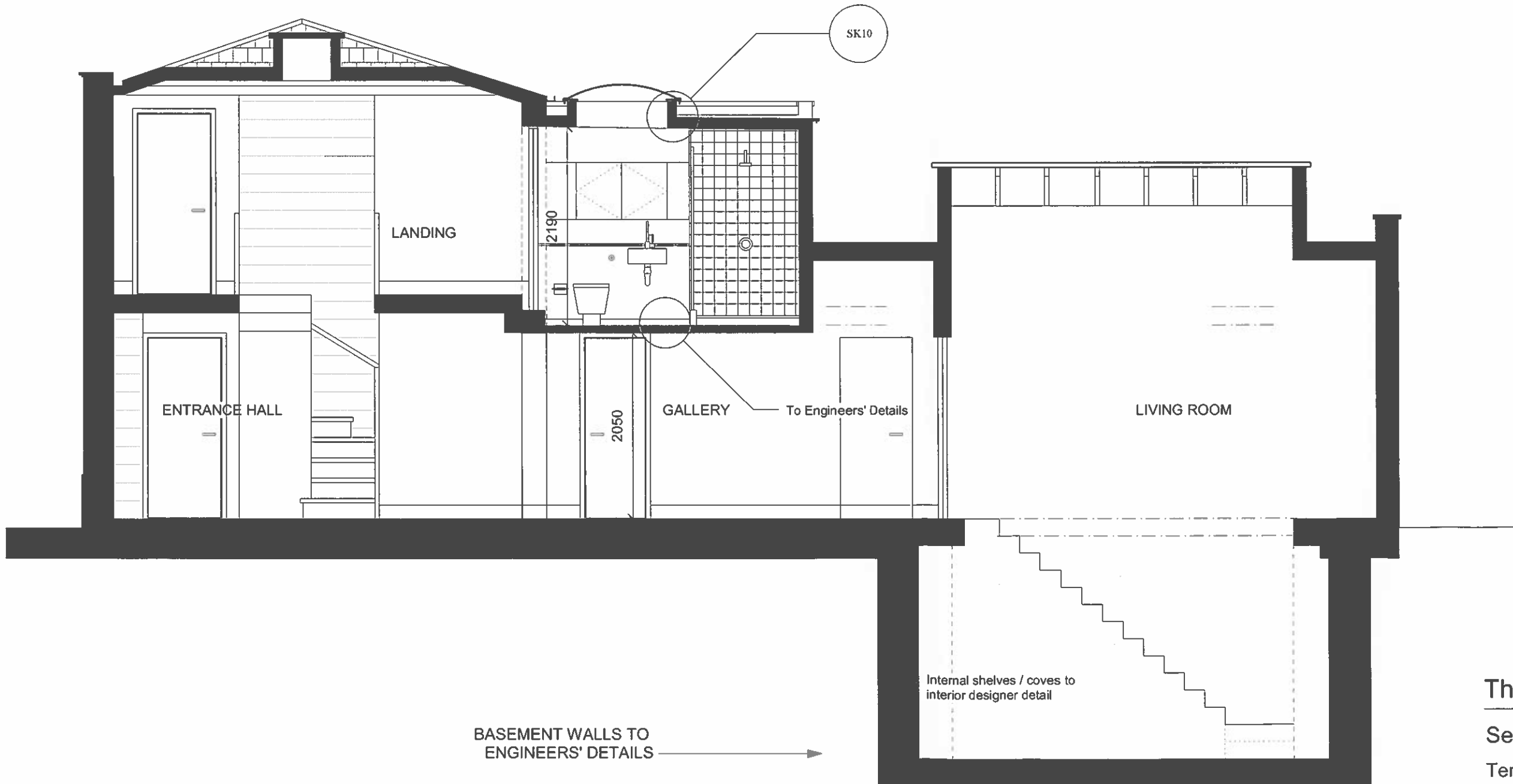
Scale 1:50 @ A3

Drawing Number 20 04A

• DO NOT MEASURE FROM DRAWING  
• IF IN DOUBT ASK

KEY

*Bob  
Ahwington  
Notary Public*



Thomas Brent & Associates Ltd.

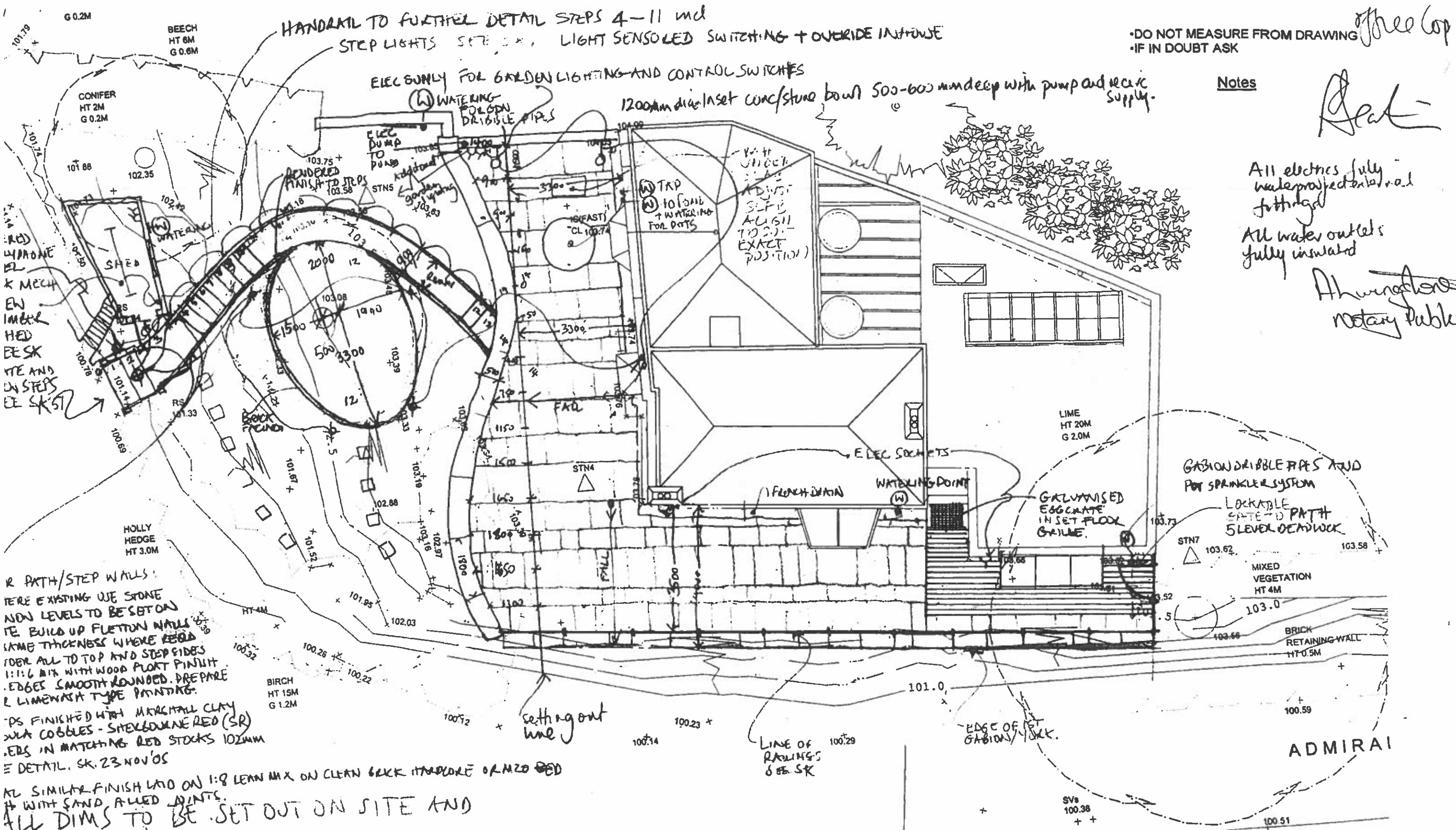
Seaton House

Terrace Lodge, Admirals Walk,  
Hampstead, NW3

Section - EXISTING / AS BUILT

Scale 1:50 @ A3

Drawing Number 20 S2A



HANDRAIL TO FURTHER DETAIL STEPS 4-11 incl  
STEP LIGHTS SEE 9002, LIGHT SENSORED SWITCHING + OVERRIDE INSTANT

• DO NOT MEASURE FROM DRAWING  
• IF IN DOUBT ASK

Free Cop

ELEC ONLY FOR GARDEN LIGHTING AND CONTROL SWITCHES

1200mm dia inset conc/stone bowl 500-600mm deep with pump and electric supply.

Notes

Seat

All electrics fully waterproofed and fully fitted  
All water outlets fully insulated

All windows & notary publes

RED WOODEN  
K MECH  
EN  
IMBR  
HED  
EESK  
TE AND  
ON STEPS  
EE SK 57

R PATH/STEP WALLS  
IF EXISTING USE STONE  
NEW LEVELS TO BE SET ON  
IF BUILD UP FLUTON WALLS  
SAME THICKNESS WHERE REQD  
FOR ALL TO TOP AND STEP SIDES  
1:1:6 MIX WITH WOOD PLOTT FINISH  
EDGES SMOOTH ROUNDED. PREPARE  
LIMEWASH TYPE PAINTING.  
TOPS FINISHED WITH MARSHALL CLAY  
OR COBBLES - SHELLSOME RED (SR)  
EDGES IN MATCHING RED STICKS 102MM  
E DETAIL. SK. 23 NOV '05

ALL SIMILAR FINISH Laid ON 1:8 LEARN MAX ON CLEAN GRK HADDORE OR M20 BED  
WITH SAND FILLLED Joints.  
ALL DIMS TO BE SET OUT ON SITE AND  
ALIGNMENTS / HEIGHTS

Thomas Brent Associates Ltd.

Seaton House

Terrace Lodge, Admirals Walk,  
Hampstead, NW3

Scale 1:100 @ A3

Drawing Number 90 01 D

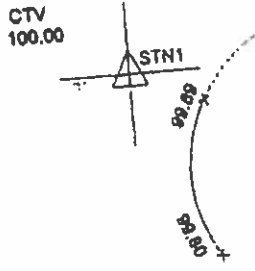
REVISION F  
23/11/05.  
PATH + LIGHTS

BB  
90 02

REVISION E  
20/10/05.  
STEPS UNDER  
MASONRY + LIGHTS  
ALTERED

GENERAL GARDEN SETTING OUT

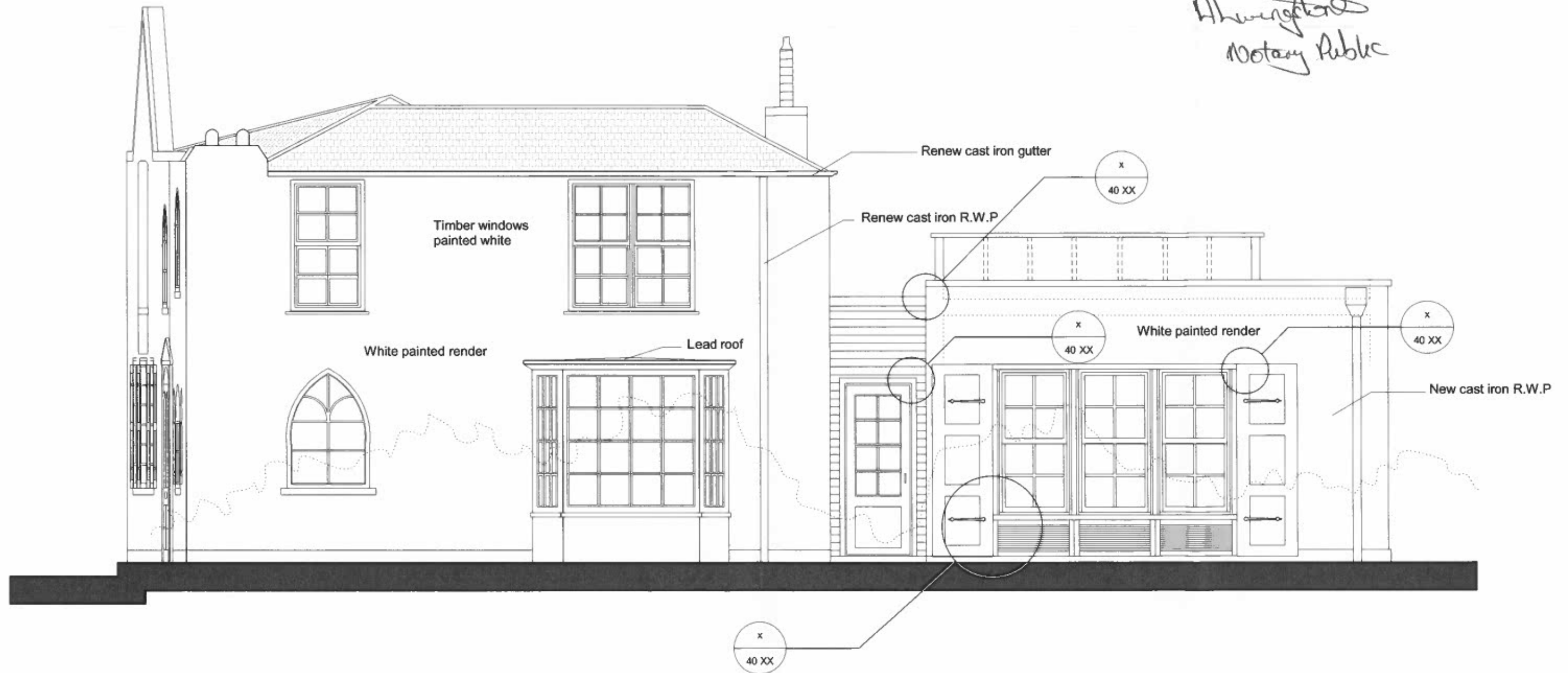
ISSUED TO SITE  
10/11/05



• DO NOT MEASURE FROM DRAWING  
• IF IN DOUBT ASK

KEY

*David  
Abington  
Notary Public*



Thomas Brent Associates Ltd.

Seaton House

Terrace Lodge, Admirals Walk,  
Hampstead, NW3

South Elevation - EXISTING / AS BUILT

Scale 1:50 @ A3

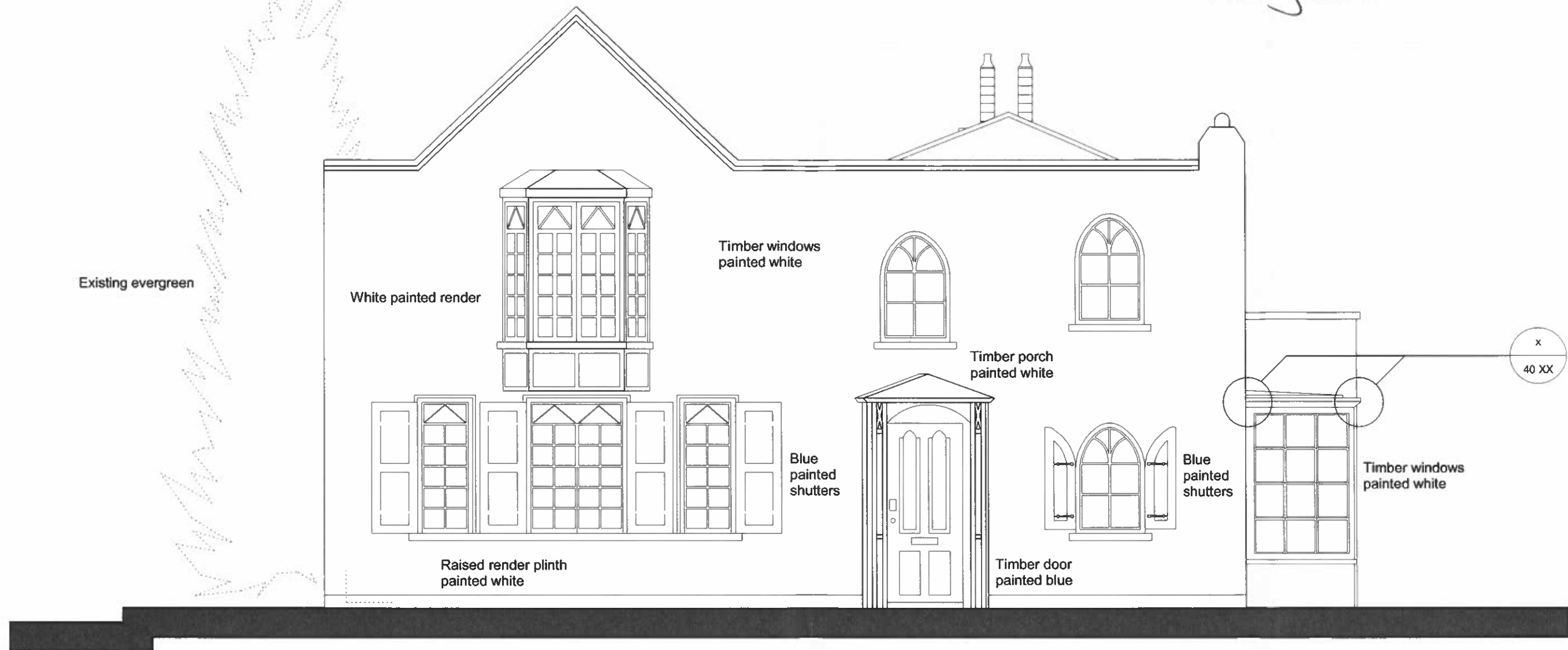
Drawing Number 20 E3 A



• DO NOT MEASURE FROM DRAWING  
• IF IN DOUBT ASK

*Seaton*  
*A Hewitson*  
*Notary Public*

KEY



**Thomas Brent Associates Ltd.**

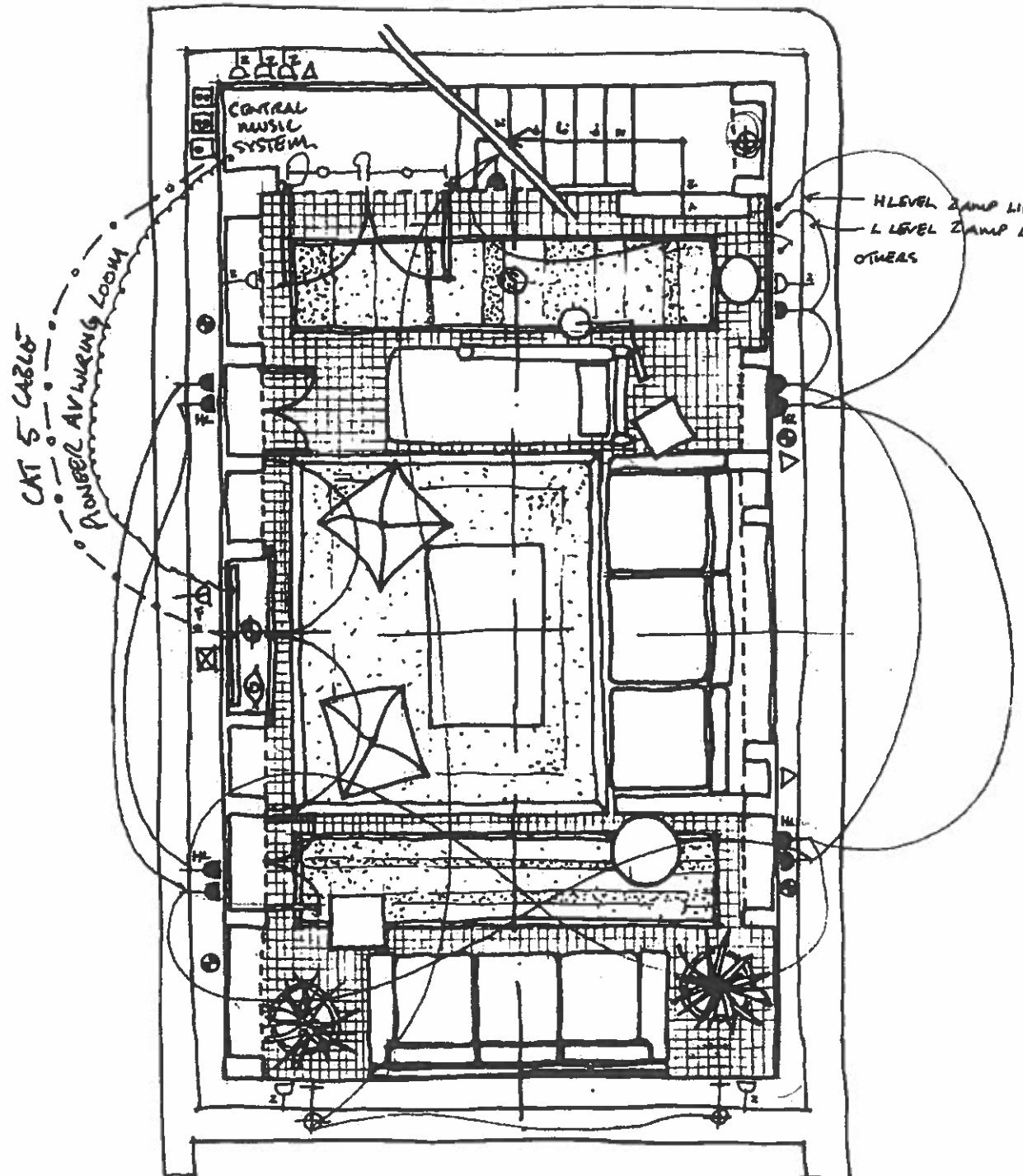
Seaton House

Terrace Lodge, Admirals Walk,  
Hampstead, NW3  
West Elevation - CONSTRUCTION

Scale 1:50 @ A3

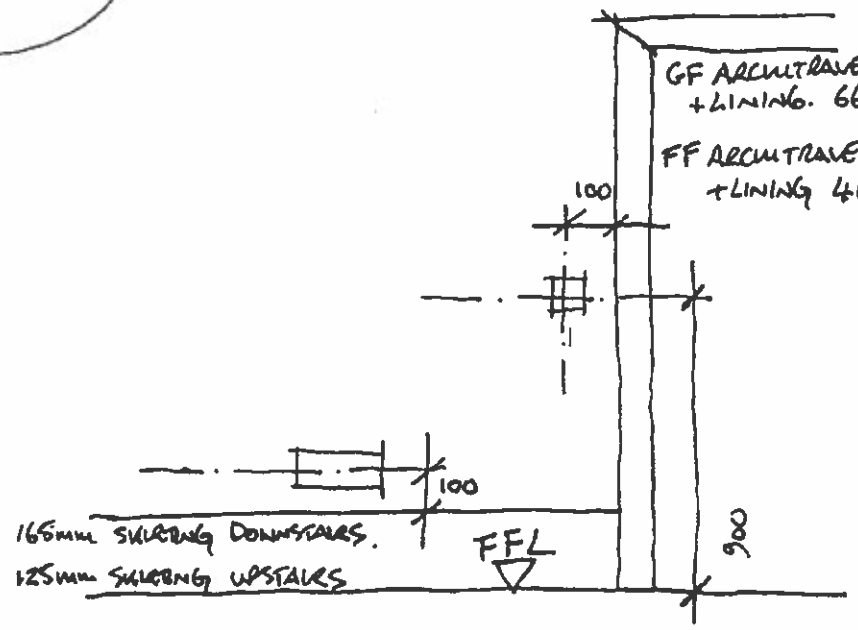
Drawing Number 20 E2

*Del*  
 Huntington  
 Notary Public



LEGEND

- ⊙ EMERGENCY LIGHT
- ⓧ TELEVISION AERIAL.
- ⊕ SPEAKER OUTLET.
- ⓧ<sup>2</sup> DOUBLE 13 AMP SWITCHED SOCKET
- ⓧ<sup>F</sup> FUSED SPUR
- ⓧ FM AERIAL/SINGLE/DOUBLE
- ▣ DISTRIBUTION BOARD.
- ▣ OPEN FUSED SPUR
- ⊕ WALL LIGHT
- ⓧ EXTRACT FAN.
- ⊕ PEDIMENT LIGHT
- ⊕ FLUORESCENT LUMINAIRE
- ⊕ LOW VOLTAGE RELEASED DOWNLIGHT
- ⓧ 2 AMP LIGHTING SOCKET
- ⓧ<sup>H</sup> 2 AMP LIGHTING SOCKET AT HIGH LEVEL
- ✓ LIGHT SWITCH.
- ⓧ 2 WAY LIGHT SWITCH.
- ⓧ DIMMER LIGHT SWITCH
- △ TELEPHONE
- ⓧ SA SLAVE AMP
- ⓧ SINGLE 13 AMP SWITCHED SOCKET.
- ⓧ A AUDIO CABLE TERMINATION
- ⊕<sup>SHLF</sup> SHLF SPEAKER OUTLET
- ⓧ 45MM DEEP SINGLE-FACE BOX.
- ⓧ SMOKE DETECTOR.
- ⓧ DIGITAL EYE



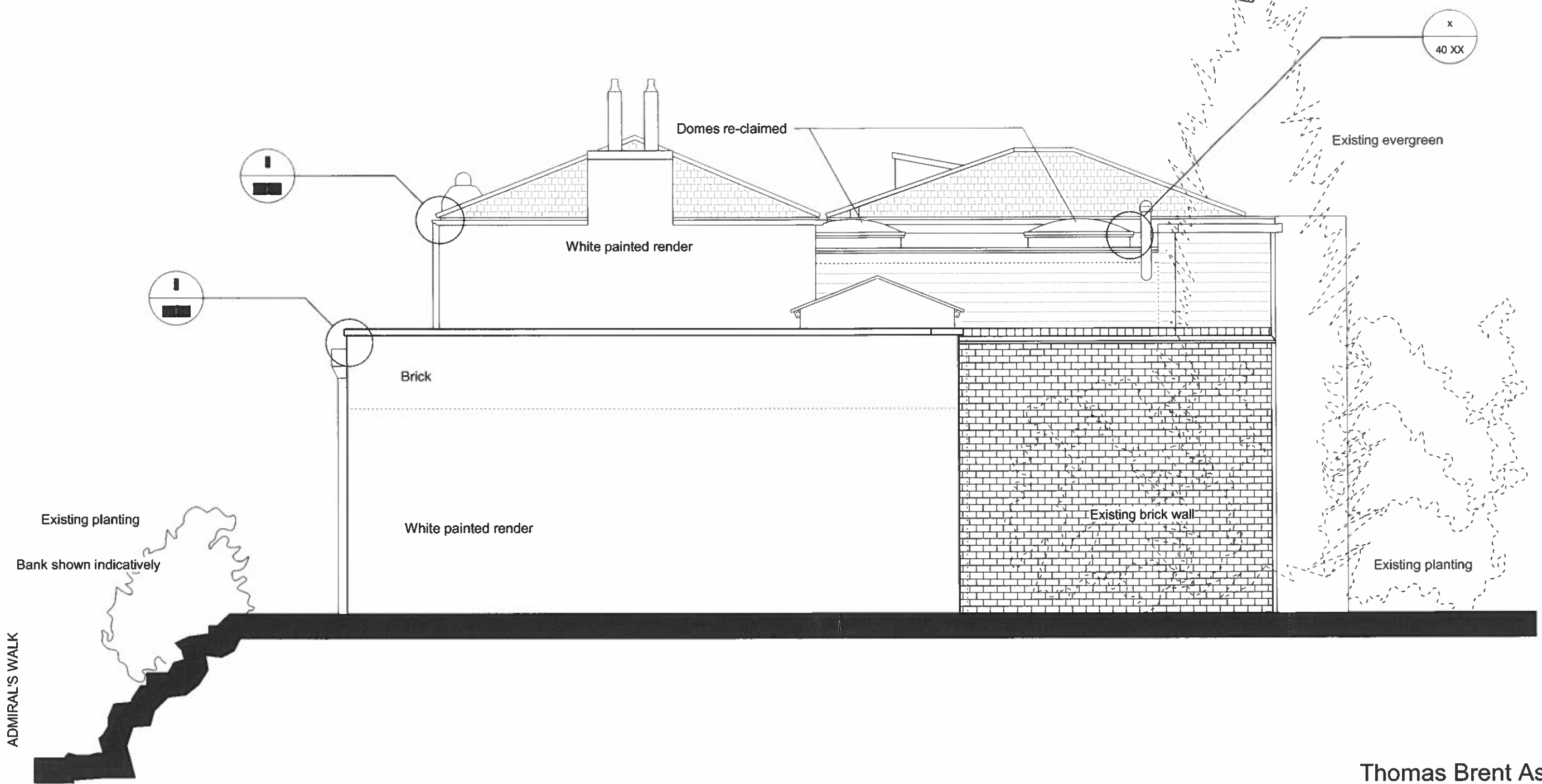
TYPICAL SOCKET AND SWITCHING POSITIONS.

Thomas Brent Associates Ltd  
 Seaton House  
 Terrace Lodge, Admirals Walk,  
 Hampstead NW3  
 Basement: Furniture &  
 Electrical Layout Revision A  
 1:50 @ A3  
 8.07.05

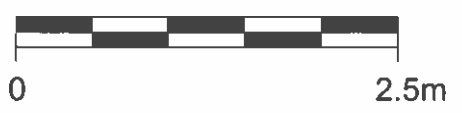
• DO NOT MEASURE FROM DRAWING  
• IF IN DOUBT ASK

*Bent*  
*Alvington*  
*Notary Public*

KEY



ADMIRAL'S WALK



Thomas Brent Associates Ltd.

Seaton House

Terrace Lodge, Admirals Walk,  
Hampstead, NW3  
East Elevation - EXISTING / AS BUILT

Scale 1:50 @ A3

Drawing Number 20 E1 A