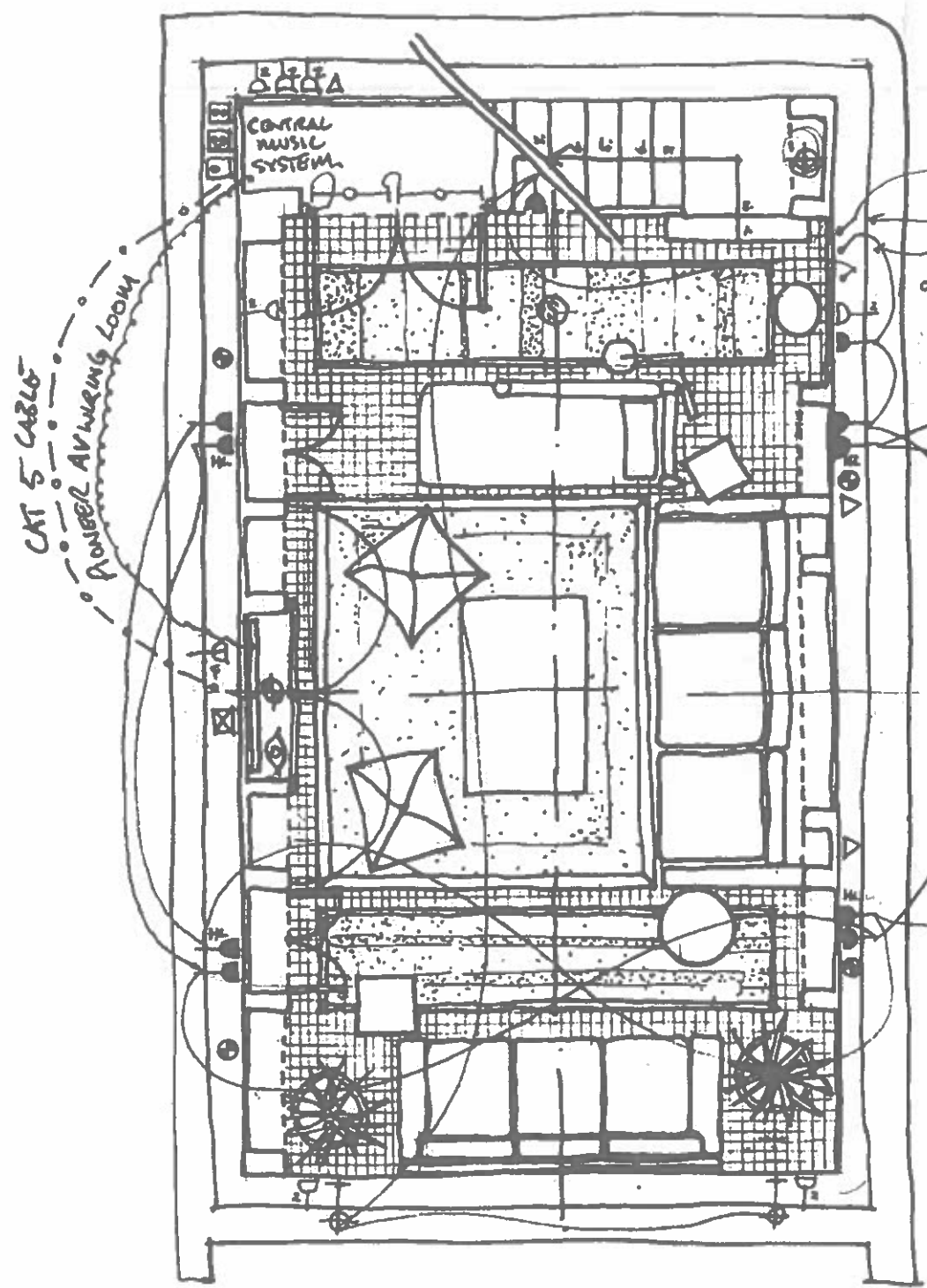


LEGEND

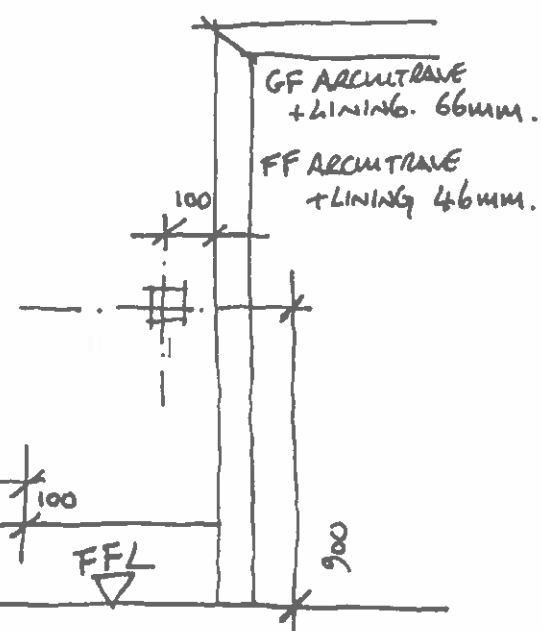
- ⊙ EMERGENCY LIGHT
- ⓧ TELEVISION AERIAL.
- ⊕ SPEAKER OUTLET.
- ⓧ² DOUBLE 13AMP SWITCHED SOCKET
- ⓧ^F FUSED SPUR
- ⓧ^{FM} FM AERIAL/SINGLE/DOUBLE
- ▭ DISTRIBUTION BOARD.
- ▭ OPEN FUSED SPUR
- ⊕ WALL LIGHT
- ⓧ EXTRACT FAN.
- ⊕ RESIDENT LIGHT
- ⊕ FLUORESCENT LUMINAIRE
- ⊕ LOW VOLTAGE RELEASED DOWNLIGHT
- ⓧ 2 AMP LIGHTING SOCKET.
- ⓧ^H 2 AMP LIGHTING SOCKET AT HIGH LEVEL
- ✓ LIGHT SWITCH.
- ⓧ 2 WAY LIGHT SWITCH.
- ⓧ DIMMER LIGHT SWITCH
- △ TELEPHONE
- ⓧ^{SA} SLAVE AMP
- ⓧ SINGLE 13AMP SWITCHED SOCKET.
- ⓧ^A AUDIO CABLE TERMINATION
- ⊕^{SHLF} SHELF SPEAKER OUTLET
- ⓧ 45MM DEEP SINGLE-BACK BOX.
- ⓧ SMOKE DETECTOR.
- ⓧ DIGITAL EYE



H LEVEL 2 AMP LIGHTING - LANTERNS IN NICHE
 L LEVEL 2 AMP LIGHTING - TABLE & FLOOR OTHERS

CAT 5 CABLE
 POWER AVAILING LOOM

165mm SWITCHEG DOWNSTAIRS.
 125mm SWITCHEG UPSTAIRS



TYPICAL SOCKET AND SWITCHING POSITIONS.

Thomas Brent Associates Ltd

Seaton House
 Terrace Lodge, Admirals Walk,
 Hampstead NW3

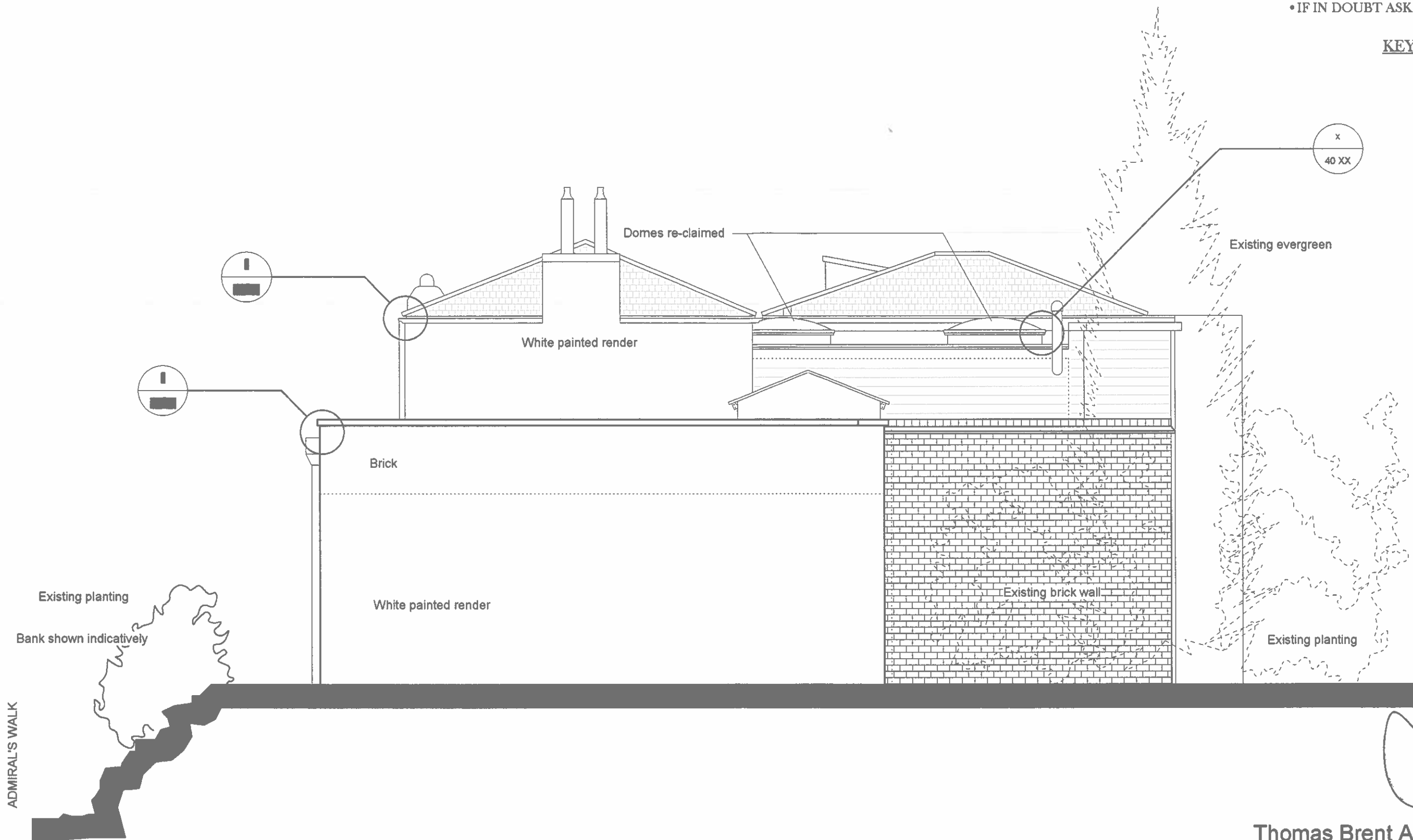
Basement: Furniture &
 Electrical Layout Revision A

1:50 @ A3

8.07.05

• DO NOT MEASURE FROM DRAWING
• IF IN DOUBT ASK

KEY



ADMIRAL'S WALK



Thomas Brent Associates Ltd.

Seaton House

Terrace Lodge, Admirals Walk,
Hampstead, NW3
East Elevation - EXISTING / AS BUILT

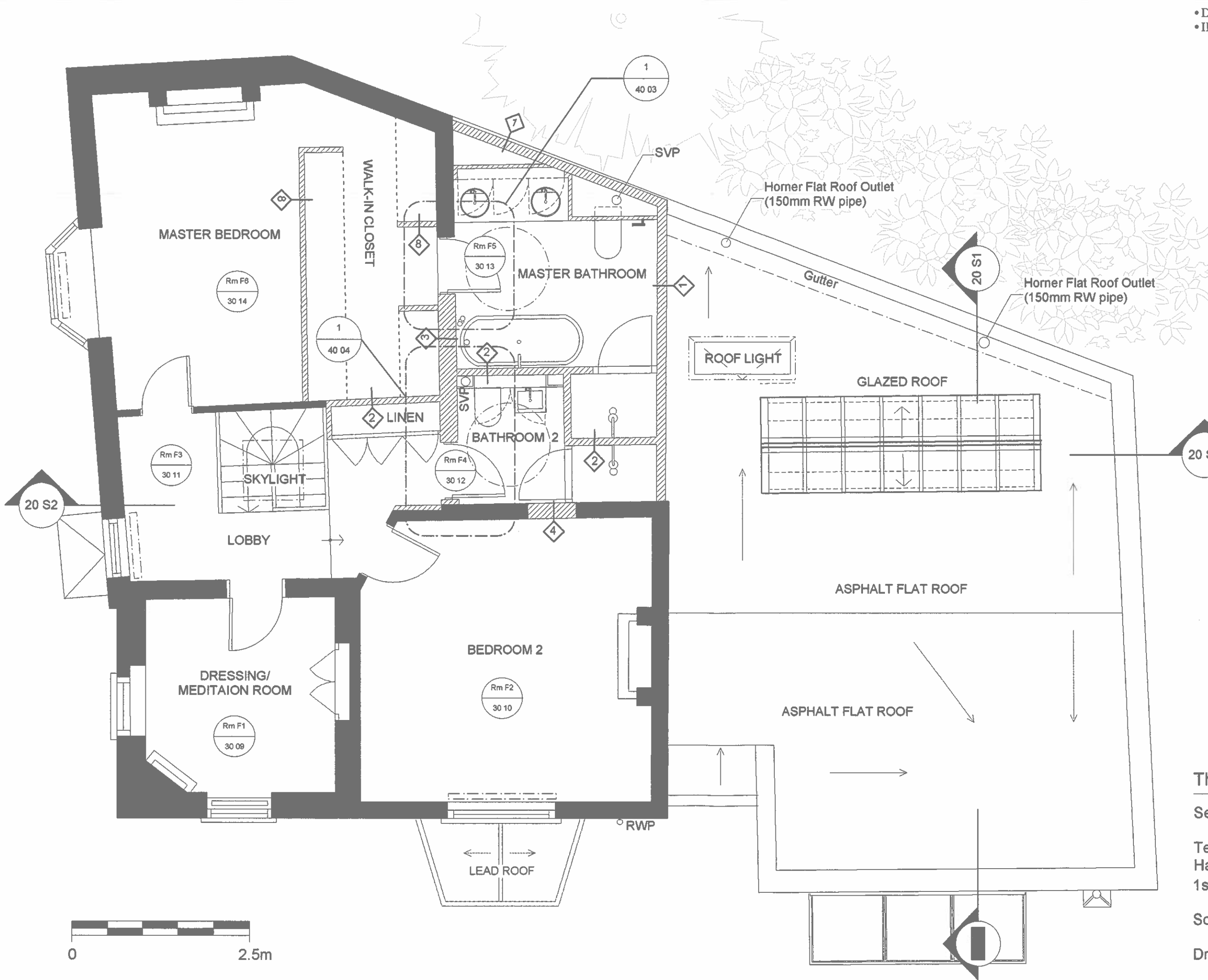
Scale 1:50 @ A3

Drawing Number 20 E1 A

• DO NOT MEASURE FROM DRAWING
 • IF IN DOUBT ASK

Notes

2 Wall build up - see 40 xx



Thomas Brent Associates Ltd.

Thomas Brent Associates Ltd.

Seaton House

Terrace Lodge, Admirals Walk,
 Hampstead, NW3
 1st Floor - EXISTING / AS BUILT

Scale 1:50 @ A3

Drawing Number 20 03A

COPE 4 LEAD LAYED OVER WBP PLY 18MM
LAYED TO FALL 1:80 SET ON 150x50 JOISTS @ 600 C/C

LAPPED UNTEARABLE FELT

OAK FEATHEREDGE AS 1ST FLOOR EXTN.

50x75MM VERTICALS

HORIZONTALS AS NECESSARY

HW CALLED DOUBLE CASEMENT WINDOW

CILL @ 800±
HEAD @ 1700±
4 PANE GLAZING EARLY WINDOW

CIRCA 500 TO HOLLY

FALL 1:80

LEAD ROLLS

STAGGERED JOINTS DOUBLE WBP PLY 36mm clad w lead

LENGTH TO SUIT

CONVEYOR ROLLERS TRAY TO SQUARE

LEDGE AND BRAZED BEAD BUTT EXTERNAL DOOR FOR PAINT. HW CILL 5 LEVEL DEADLOCK AND RIM LATCH

PLAN

REMOTE BUTTON ELECTRIC OPENING LATCH. SELF CLOSING TO BE FITTED

APPROX WARENTH HOLLY FEATHER EDGE ASBLE

LAPPED UNTEARABLE FELT
- DPCM
OAK FEATHEREDGE ON TERMINATED SYSTEMS

SOLE PLATE

SLAB METAL TROWELLED

COPE 4 LEAD

18MM WBP PLY

STEAM ROOF

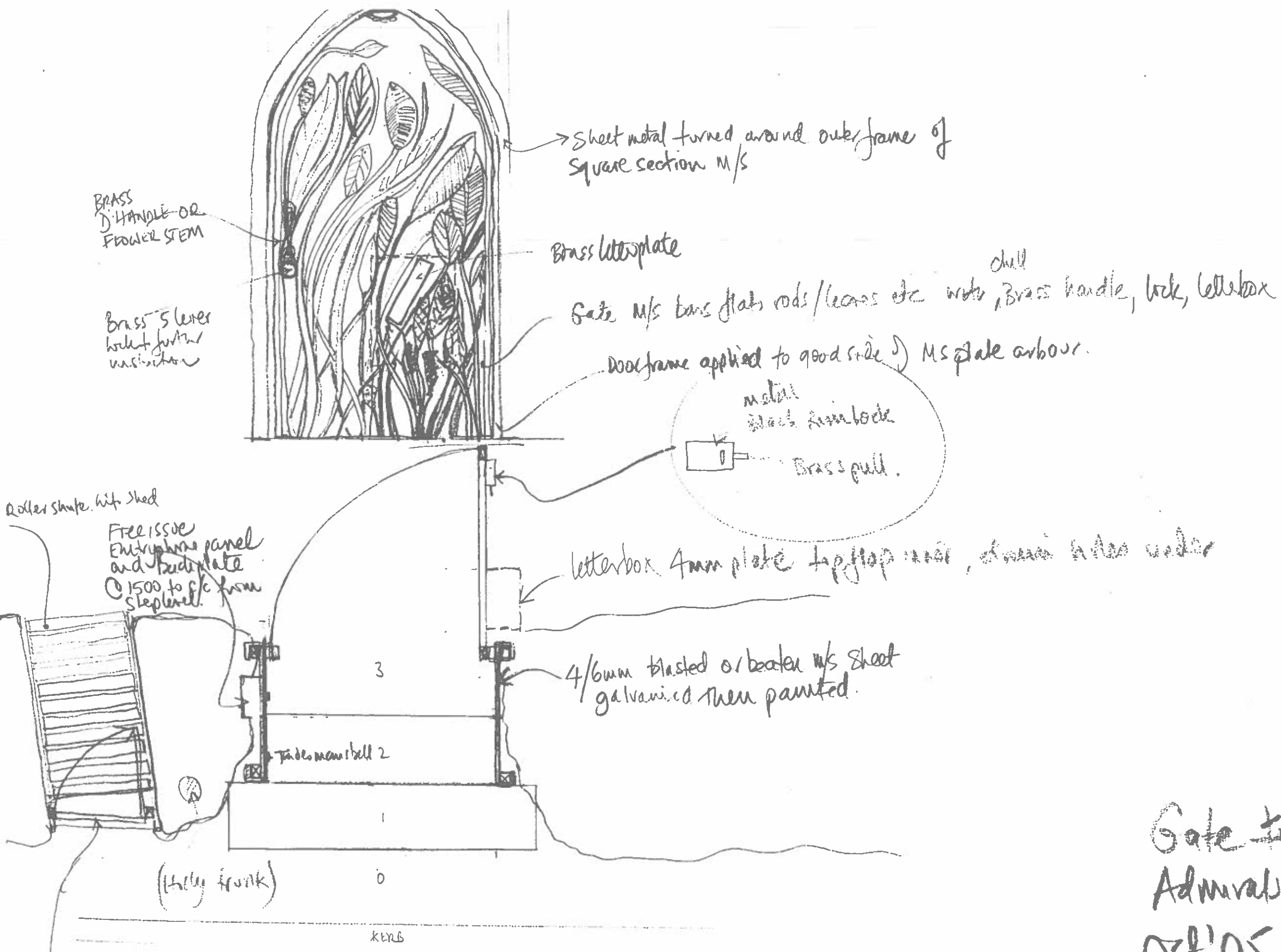
INTERNAL SECTION

150mm conc slab F/FLOOR LEVEL AT STEP 4 FINISH INTERNAL
BASIC R1 MESH LAYED ON SAND BLINDING ON BED OF HARD CORE

SCALE 1:20

TERRACE LODGE SHED OCT'05
TRAV 02074358545
DWG NO 90:51

ISSUED 10/10



Handwritten signature

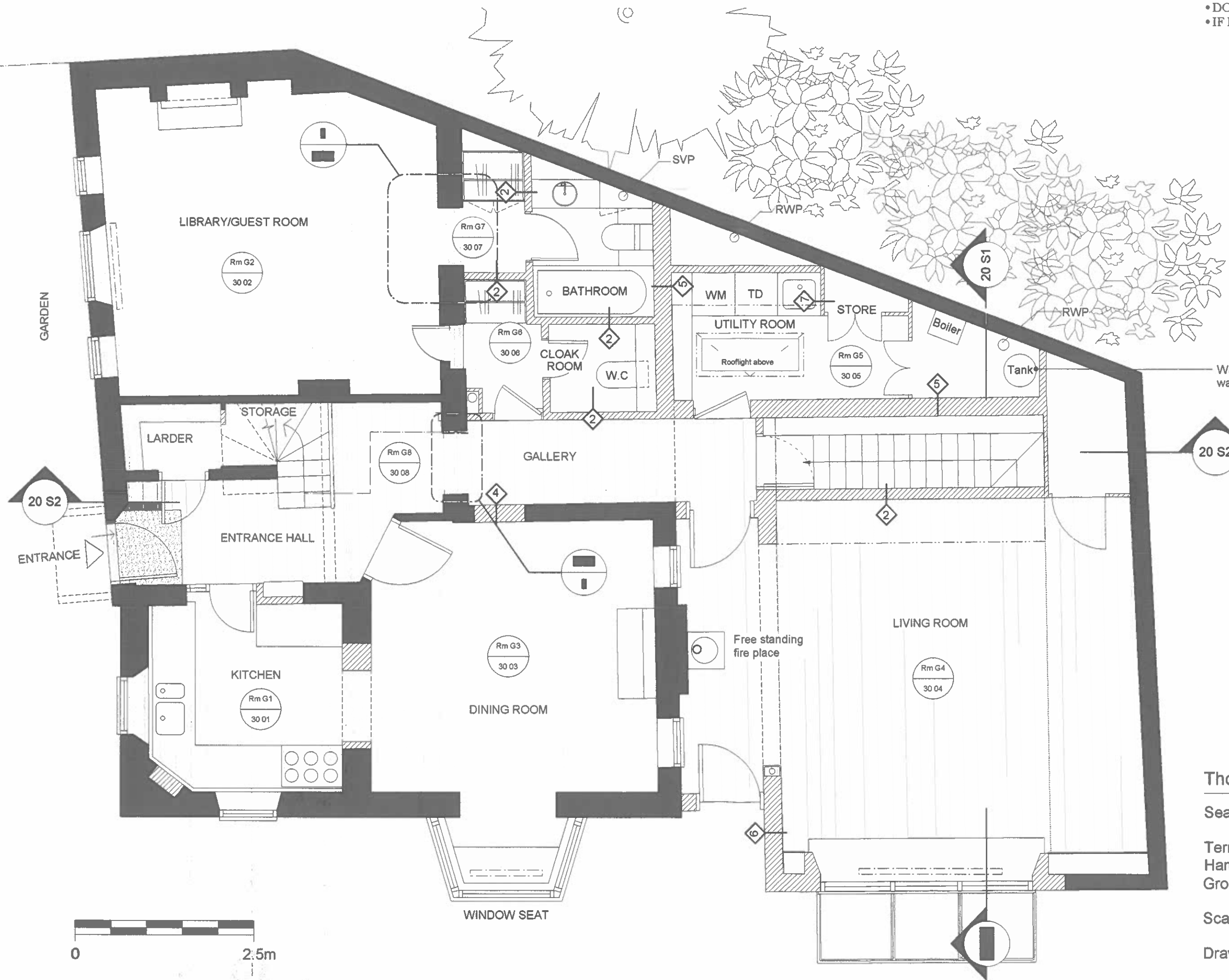
Gate to Terrace Lodge
 Admirals Walk NW3
 Oct '05
 1:20

metal flap for delivery table, opened via trade man's bell set high over step 2

• DO NOT MEASURE FROM DRAWING
• IF IN DOUBT ASK

Notes

2 Wall build up - see 40 xx



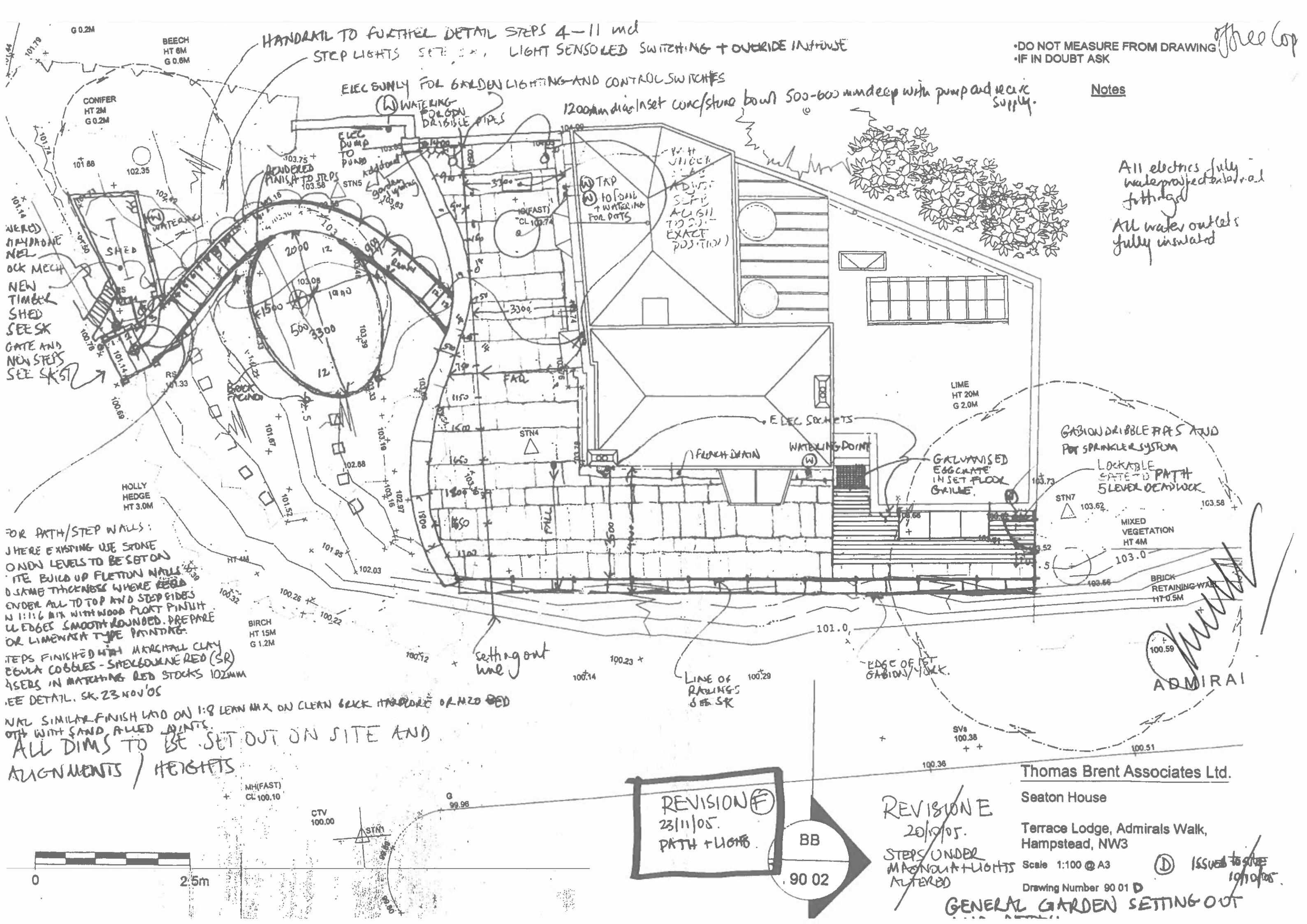
Thomas Brent Associates Ltd.

Seaton House

Terrace Lodge, Admirals Walk,
Hampstead, NW3
Ground Floor - EXISTING / BUILT

Scale 1:50 @ A3

Drawing Number 20 02A



Office Cop

DO NOT MEASURE FROM DRAWING
IF IN DOUBT ASK

Notes

All electrics fully waterproofed and rated for the job
All water outlets fully insulated

HANDRAIL TO FURTHER DETAIL STEPS 4-11 incl
STEP LIGHTS SEE SK 23 NOV '05 LIGHT SENSORED SWITCHING + OVERRIDE IN HOUSE

ELEC ONLY FOR GARDEN LIGHTING AND CONTROL SWITCHES
WATERING FOR GDN DRAINABLE PIPES
1200mm dia inset concrete bowl 500-600mm deep with pump and electric supply.

NEW CONIFER
NEW BEECH
NEW HEDGES
NEW MECH
NEW SHED
SEE SK
GATE AND
NEW STEPS
SEE SK 5/05

FOR PATH/STEP WALLS:
WHERE EXISTING USE STONE
ON NEW LEVELS TO BE SET ON
SITE BUILD UP FLETTON WALLS
TO SAME THICKNESS WHERE REQD
UNDER ALL TO TOP AND STEP SIDES
IN 1:1.5 MIX WITH WOOD PLOTT FINISH
ALL EDGES SMOOTH ROUNDED. PREPARE
OR LIMEWASH TYPE PAINTING.

STEPS FINISHED WITH MARSHALL CLAY
COBBLER COBBLES - SHELLOWNER RED (SR)
LAYS IN MATCHING RED STOCKS 102MM
SEE DETAIL. SK. 23 NOV '05
NAIL SIMILAR FINISH LAY ON 1:8 LEAN MAX ON CLEAN BRICK AND POLISH OR H2O RED
OFF WITH SAND FLETTON PAINTS.
ALL DIMS TO BE SET OUT ON SITE AND
ALIGNMENTS / HEIGHTS

GARDEN DRAINABLE PIPES AND
POT SPRINKLER SYSTEM
LOCKABLE GATE TO PATH
5 LEVEL DEADLOCK

GALVANISED
EGGcrate
IN SET FLOOR
GRILLE

BRICK
RETAINING WALL
HT 0.5M

ADMIRAL

REVISION F
23/11/05
PATH + LIGHTS

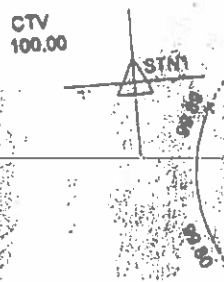
BB
90 02

REVISION E
20/10/05
STEPS UNDER
MAGNOLIA + LIGHTS
ALTERED

Thomas Brent Associates Ltd.
Seaton House
Terrace Lodge, Admirals Walk,
Hampstead, NW3
Scale 1:100 @ A3
Drawing Number 90 01 D

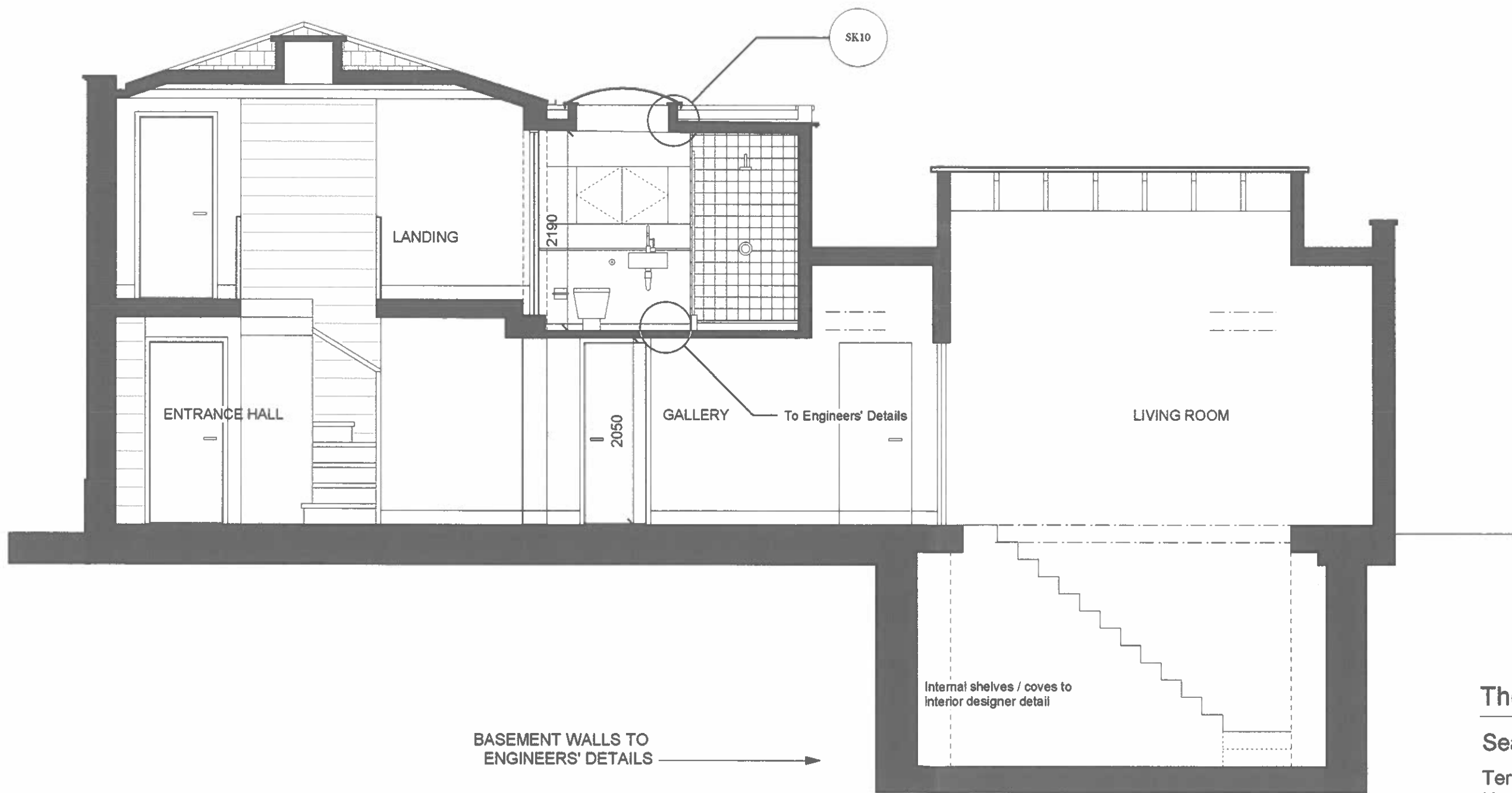
GENERAL GARDEN SETTING OUT

ISSUED TO SITE
10/10/05



• DO NOT MEASURE FROM DRAWING
• IF IN DOUBT ASK

KEY



Thomas Brent & Associates Ltd.

Seaton House

Terrace Lodge, Admirals Walk,
Hampstead, NW3

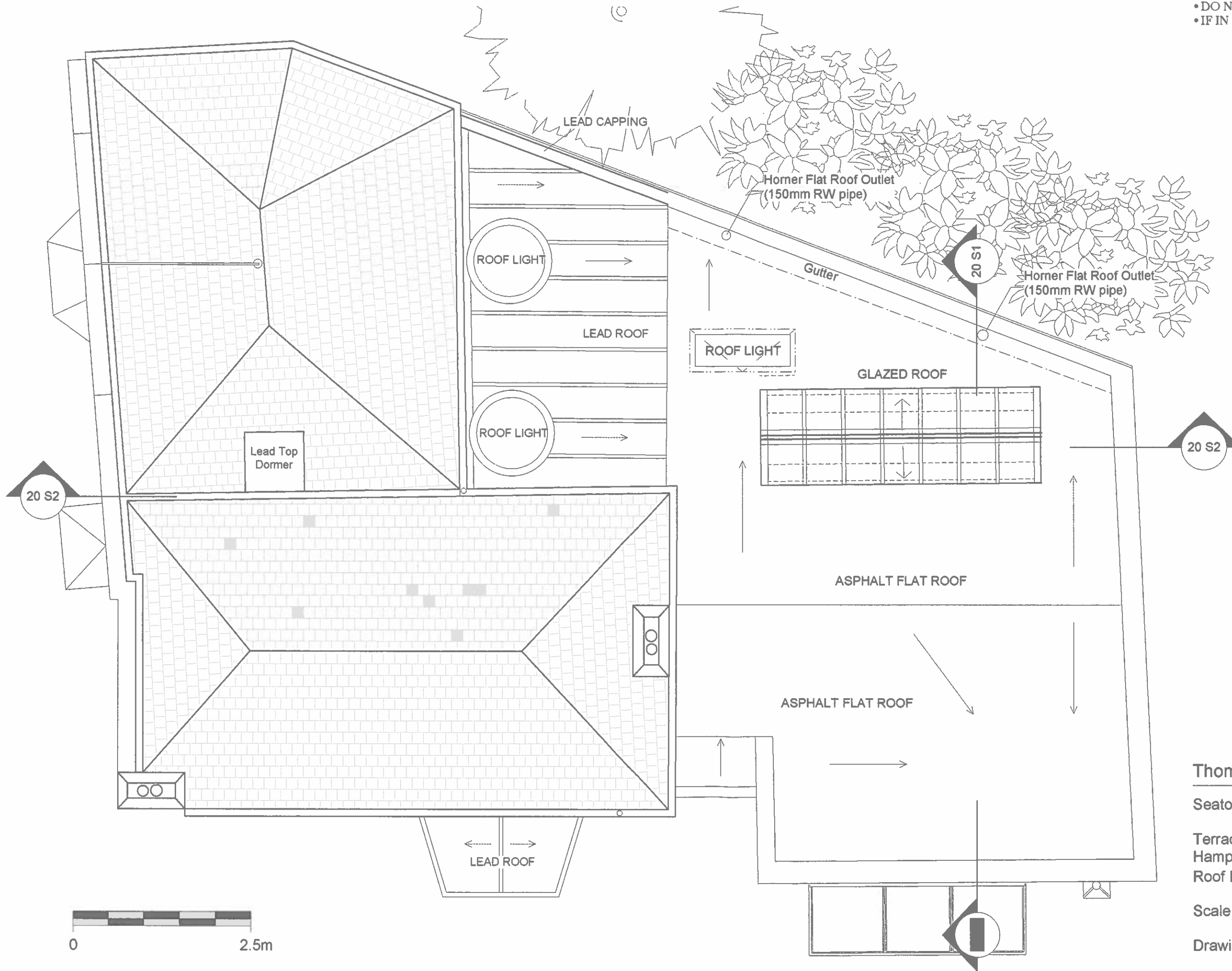
Section - EXISTING / AS BUILT

Scale 1:50 @ A3

Drawing Number 20 S2A

• DO NOT MEASURE FROM DRAWING
• IF IN DOUBT ASK

Notes



Thomas Brent Associates Ltd.

Seaton House

Terrace Lodge, Admirals Walk,
Hampstead, NW3
Roof Plan - CONSTRUCTION

Scale 1:50 @ A3

Drawing Number 20 04A



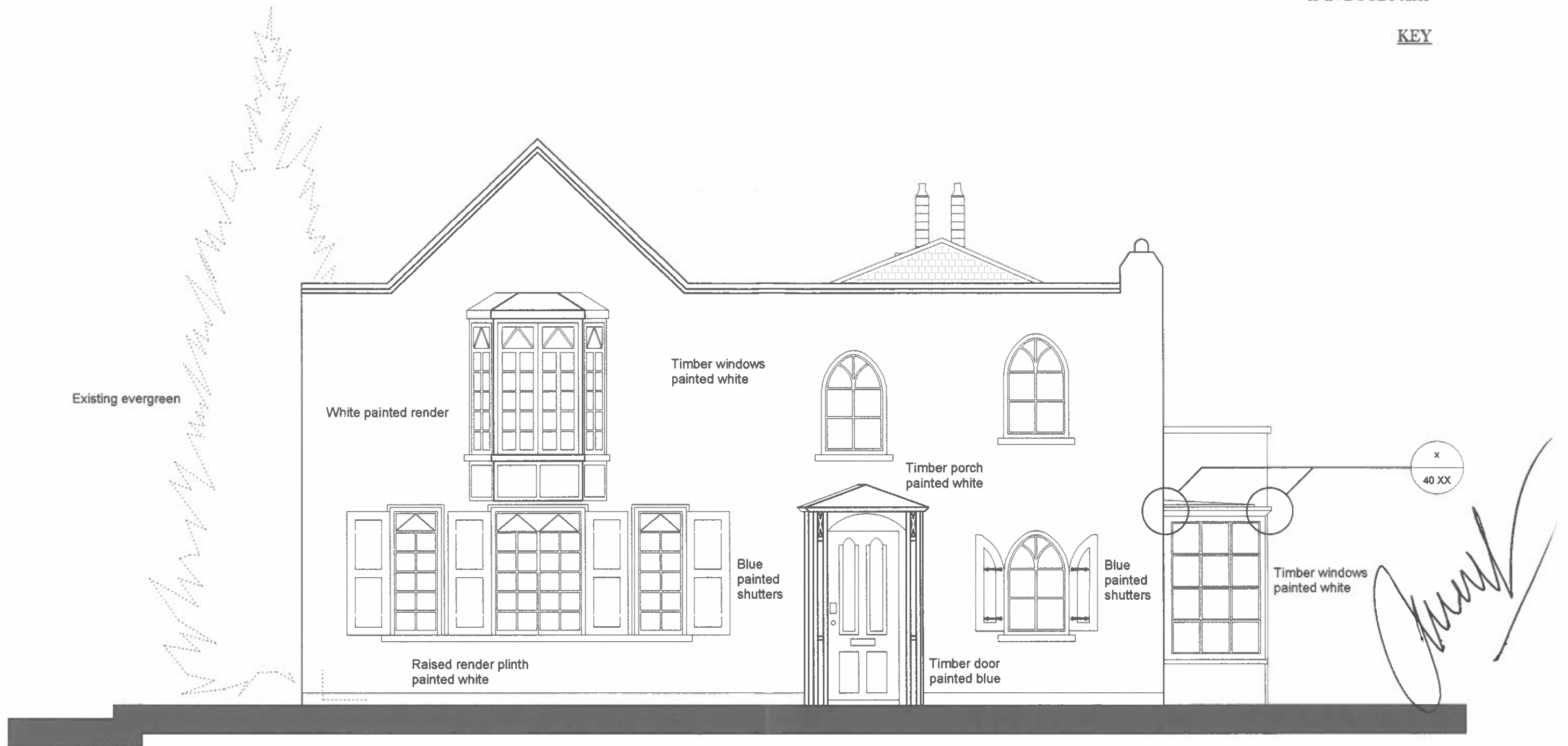
Terrace Lodge, Admiral's Walk,
London NW3 6RS

Site location plan
1:1250 @ A4

A handwritten signature in black ink, appearing to read 'Mum'.

• DO NOT MEASURE FROM DRAWING
• IF IN DOUBT ASK

KEY



Thomas Brent Associates Ltd.

Seaton House

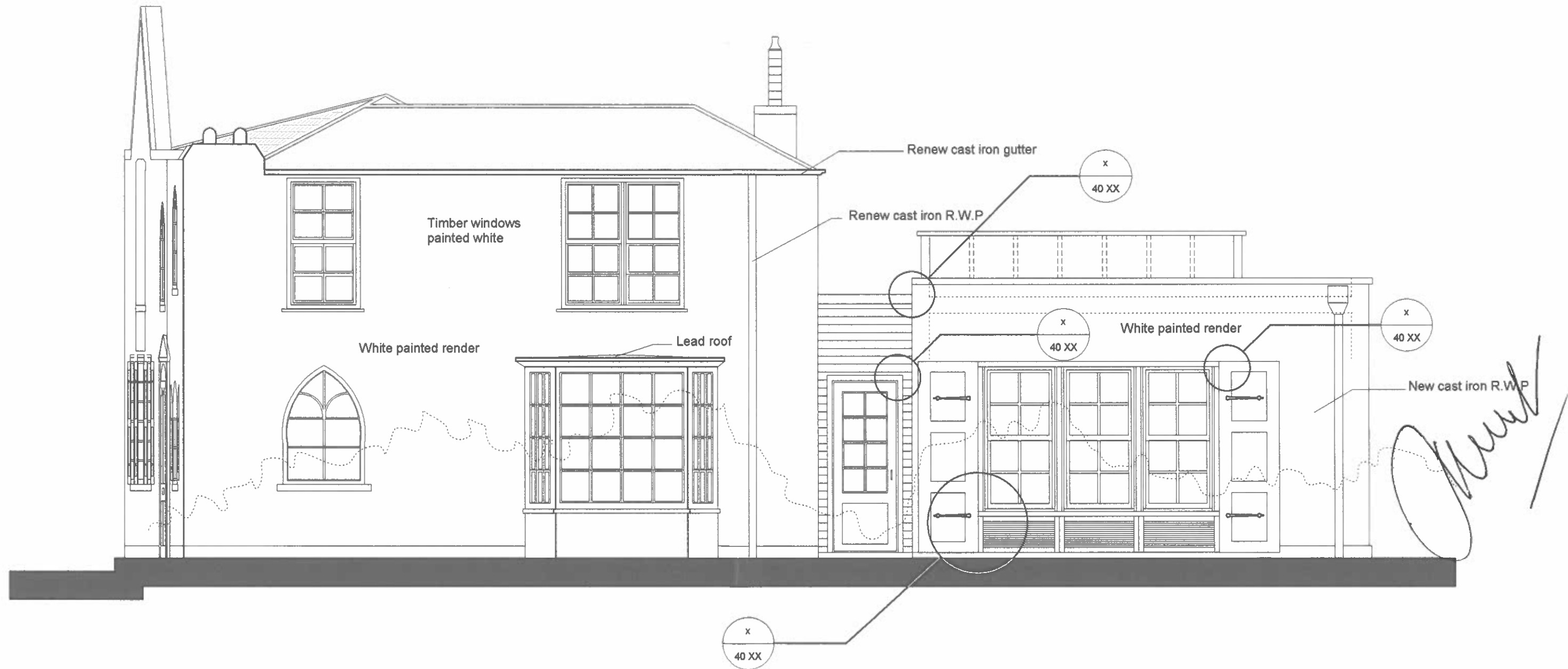
Terrace Lodge, Admirals Walk,
Hampstead, NW3
West Elevation - CONSTRUCTION

Scale 1:50 @ A3

Drawing Number 20 E2

• DO NOT MEASURE FROM DRAWING
• IF IN DOUBT ASK

KEY



Thomas Brent Associates Ltd.

Seaton House

Terrace Lodge, Admirals Walk,
Hampstead, NW3

South Elevation - EXISTING / AS BUILT

Scale 1:50 @ A3

Drawing Number 20 E3 A