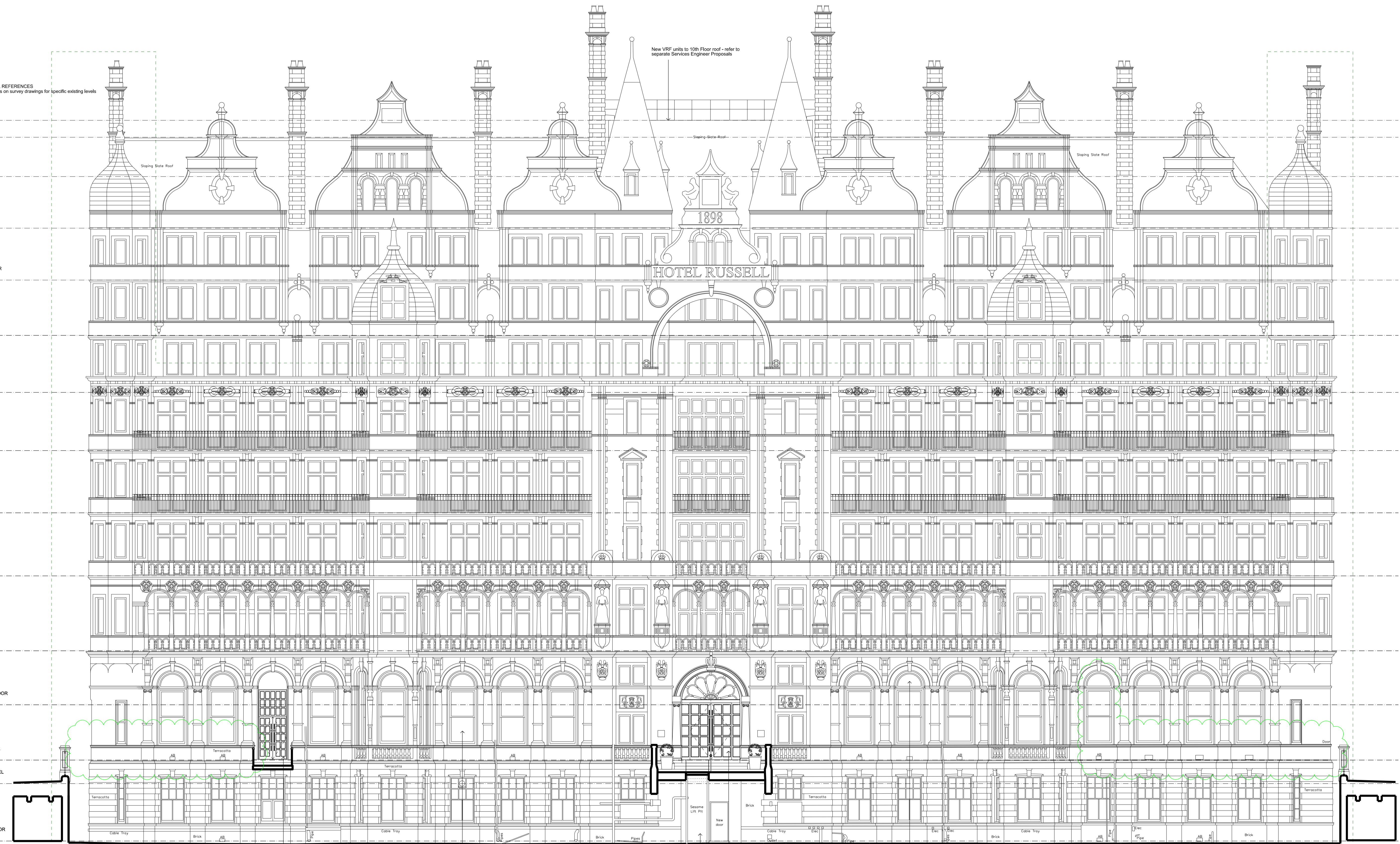


GENERAL LEVEL REFERENCES
Refer to spot levels on survey drawings for specific existing levels

- FLAT ROOF +56.300 FFL
- RIDGE +57.400 FFL
- NINTH FLOOR +55.310 FFL
- EIGHTH FLOOR +52.570 FFL
- SEVENTH FLOOR +49.810 FFL
- SIXTH FLOOR +46.870 FFL
- FIFTH FLOOR +43.940 FFL
- FOURTH FLOOR +40.750 FFL
- THIRD FLOOR +37.440 FFL
- SECOND FLOOR +34.000 FFL
- FIRST FLOOR +30.110 FFL
- MEZZANINE FLOOR +27.240 FFL
- GROUND FLOOR +24.300 FFL
- PAVEMENT LEVEL +23.060 FFL
- BASEMENT FLOOR +20.000 FFL



Elevation 1 - Russell Square

New timber framed glass door to cafe with steps reconfigured

Redundant entrance infilled & replaced with new window to match adjacent. Pedestals reconfigured with new balustrading to suit.

New external wall, door & ramp to allow for new 'Sesame' lift pit. Existing services (inc. incoming electrical supply to main switchboards) to be re-routed - refer to Services Engineer for details. Steelwork design to be confirmed by Structural Engineer & Lift sub-contractor. All lift works and support to be in accordance with structural engineer's requirements.

Main Entrance New contemporary bronze framed glass doors and fanlight in design reflective of original historic entrance. Marble steps reconfigured to incorporate new accessible lift & new plinths for planters.

Window Overpanels Generally existing window blanking panels to be replaced with clear glass to match existing

Note: For street elevations showing perimeter fencing and Ground Floor External Strip-out details, refer to Epr drawing 10089-T-01-9000-Z00.

Refer to separate Elementa elevations for Services proposals.

Refer to separate LDI for external lighting proposals.

Green clouds represent changes since original application in March

--- Focus Areas for External Restoration Works - refer to separate Harrison Goldman report for details

Keyplan

North

Notes:
1. Do not scale
2. Contractor to Check all dimensions and report omissions and errors to the Architect

02 REVISED & ISSUED FOR PLANNING	01.10.15	MG
01 ISSUED FOR PLANNING	03.03.15	MG TN
No Revision	Date	Initial Chkd

EPR
architects

30 Millbank
London SW1P 4DU
+44 (0) 20 7932 7600
www.epr.co.uk

Russell Hotel
Camden
Proposed West Elevation, Russell Square

PLANNING	1: 100 @ A1	03.02.15
Project No	Type	Rev
10089 - T - 01 - 0420 - ZWE	02	