

drawing. **Isometric - System build up**

date. **February 2013**

revision. -

drawn by. **RC**

scale. **nts**

drawing no. **MASONRY-EWI-SILICONE-01**

drawing set. **04**

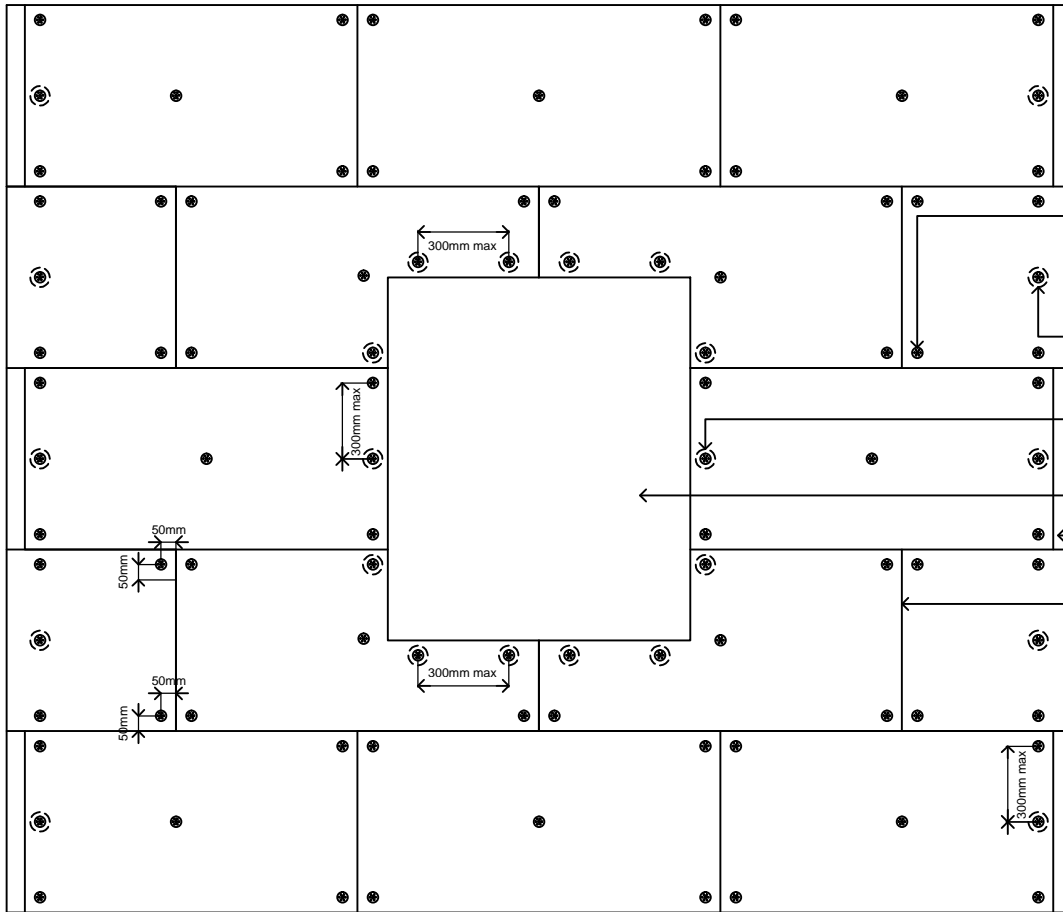


1 Kid Glove Road, Golborne Enterprise Park,  
Golborne, Greater Manchester, WA3 3GS

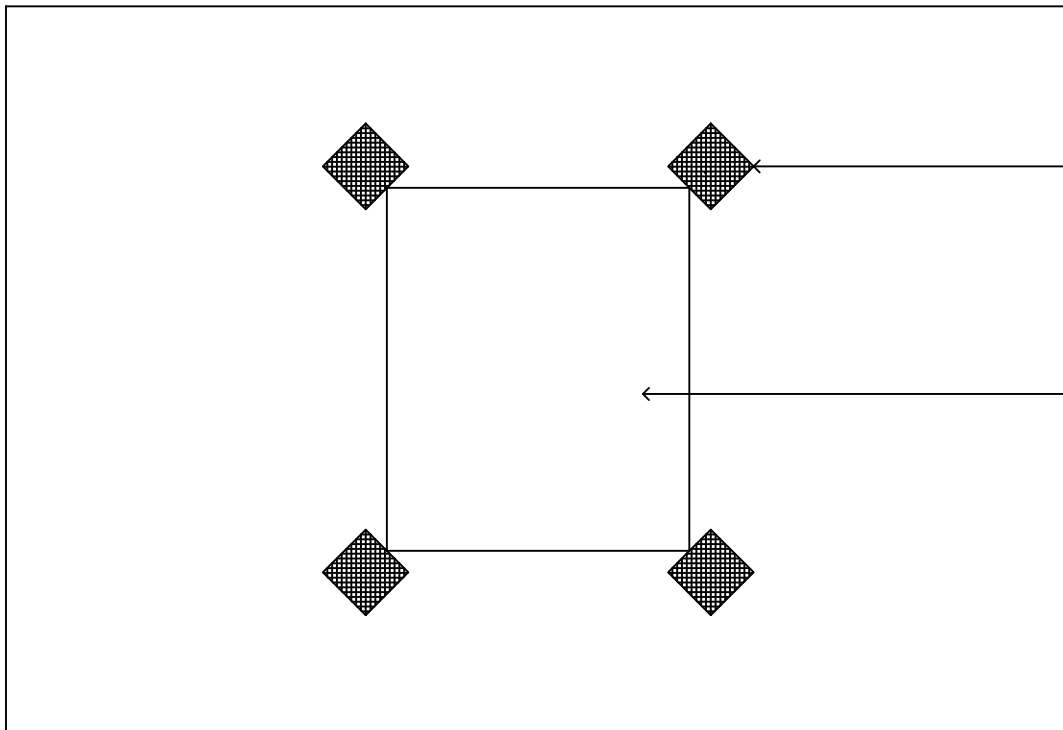
Tel: 01942 717100 Fax: 01942 717101

Web: [www.wbs-ltd.co.uk](http://www.wbs-ltd.co.uk)

E-mail: [technical@wbs-ltd.co.uk](mailto:technical@wbs-ltd.co.uk)



- WBS approved insulation fixings  
1 in each corner of the board set  
in 50mm in each direction and 1  
in the centre of each board
- Fixings at a maximum of 300mm  
centres at building corner
- Fixings at a maximum of 300mm  
centres around all openings
- Window / door opening
- Staggered insulation board  
joints at building corner
- 1200x600mm WBS 90mm  
Epsitherm insulation  
boards  
N.B. 1 fixing per m<sup>2</sup> must be installed  
through the glass fibre mesh where  
mineral fibre is the chosen insulant.  
100 x 100mm scrim patch to be  
applied over fixing head
- Stainless steel secondary fixings are  
required on all buildings 4 storeys  
and above



- 200x200mm glass fibre reinforcing  
mesh scrim bedded in adhesive to  
all window/door corners on top of  
main reinforcing coat
- Window / door opening

drawing. **Fixing arrangement**

date. February 2013

revision. -

drawn by. RC

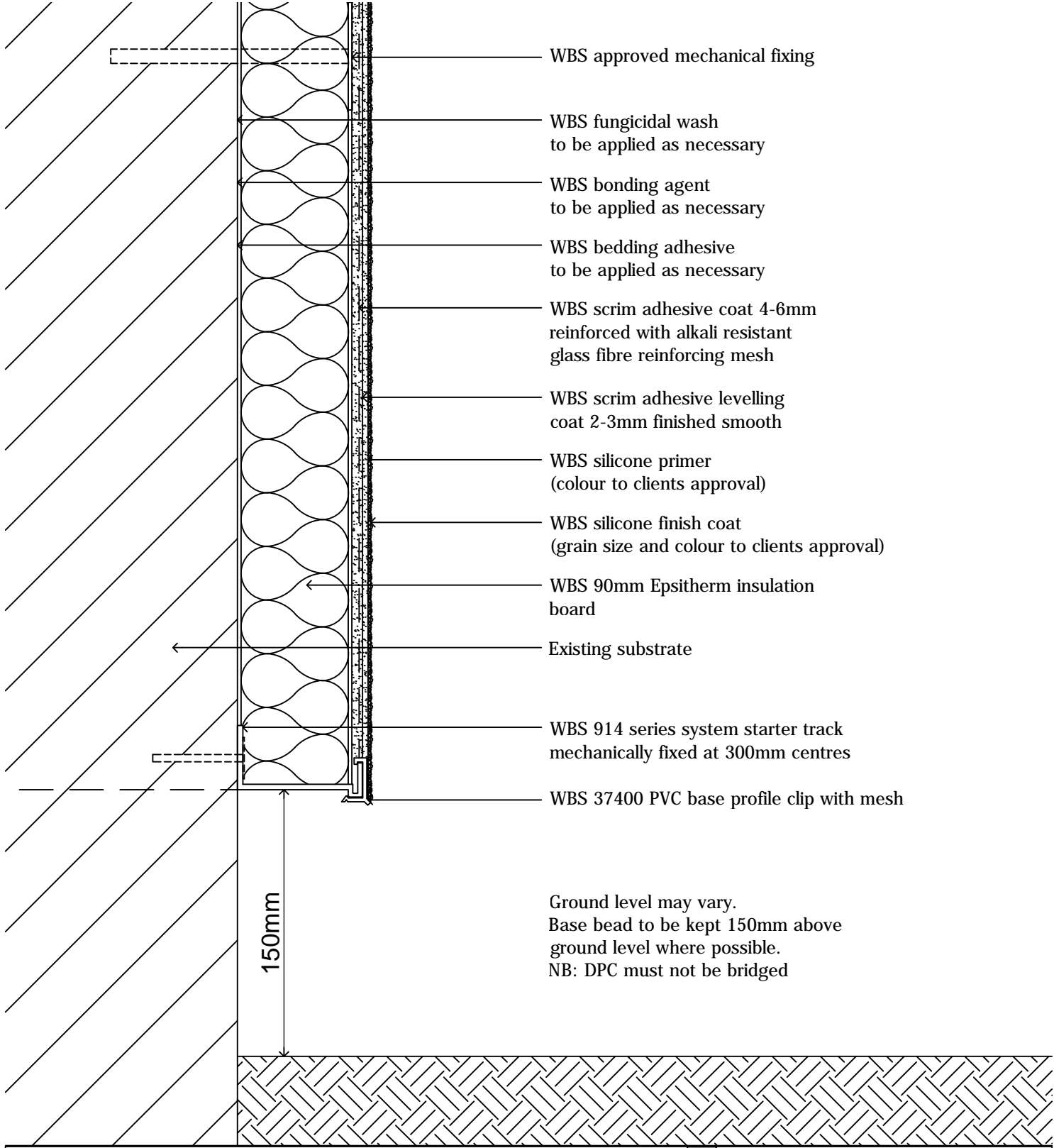
scale. nts

drawing no. **MASONRY-EWI-SILICONE-02**

drawing set. 04



1 Kid Glove Road, Golborne Enterprise Park,  
Golborne, Greater Manchester, WA3 3GS  
Tel: 01942 717100 Fax: 01942 717101  
Web: www.wbs-ltd.co.uk  
E-mail: technical@wbs-ltd.co.uk



- WBS approved mechanical fixing
- WBS fungicidal wash to be applied as necessary
- WBS bonding agent to be applied as necessary
- WBS bedding adhesive to be applied as necessary
- WBS scrim adhesive coat 4-6mm reinforced with alkali resistant glass fibre reinforcing mesh
- WBS scrim adhesive levelling coat 2-3mm finished smooth
- WBS silicone primer (colour to clients approval)
- WBS silicone finish coat (grain size and colour to clients approval)
- WBS 90mm Epsitherm insulation board
- Existing substrate
- WBS 914 series system starter track mechanically fixed at 300mm centres
- WBS 37400 PVC base profile clip with mesh

Ground level may vary.  
 Base bead to be kept 150mm above ground level where possible.  
 NB: DPC must not be bridged

150mm

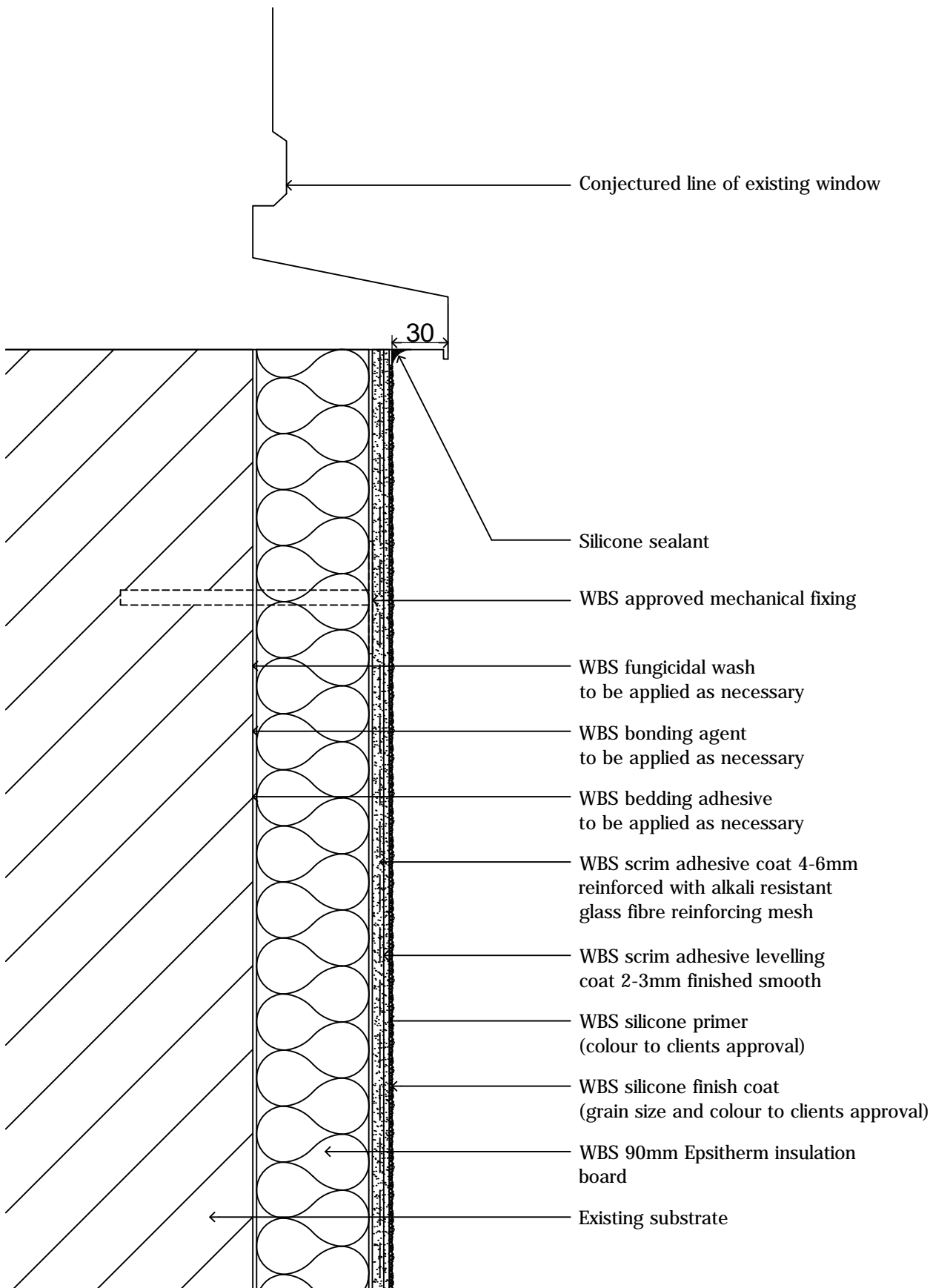
drawing. **Base bead detail**

date. February 2013      revision. -      drawn by. RC      scale. nts

drawing no. **MASONRY-EWI-SILICONE-03**      drawing set. 04

**wetherby**  
 creating a greener future

1 Kid Glove Road, Golborne Enterprise Park,  
 Golborne, Greater Manchester, WA3 3GS  
 Tel: 01942 717100 Fax: 01942 717101  
 Web: www.wbs-ltd.co.uk  
 E-mail: technical@wbs-ltd.co.uk



drawing. **Window cill detail**

date. February 2013

revision. -

drawn by. RC

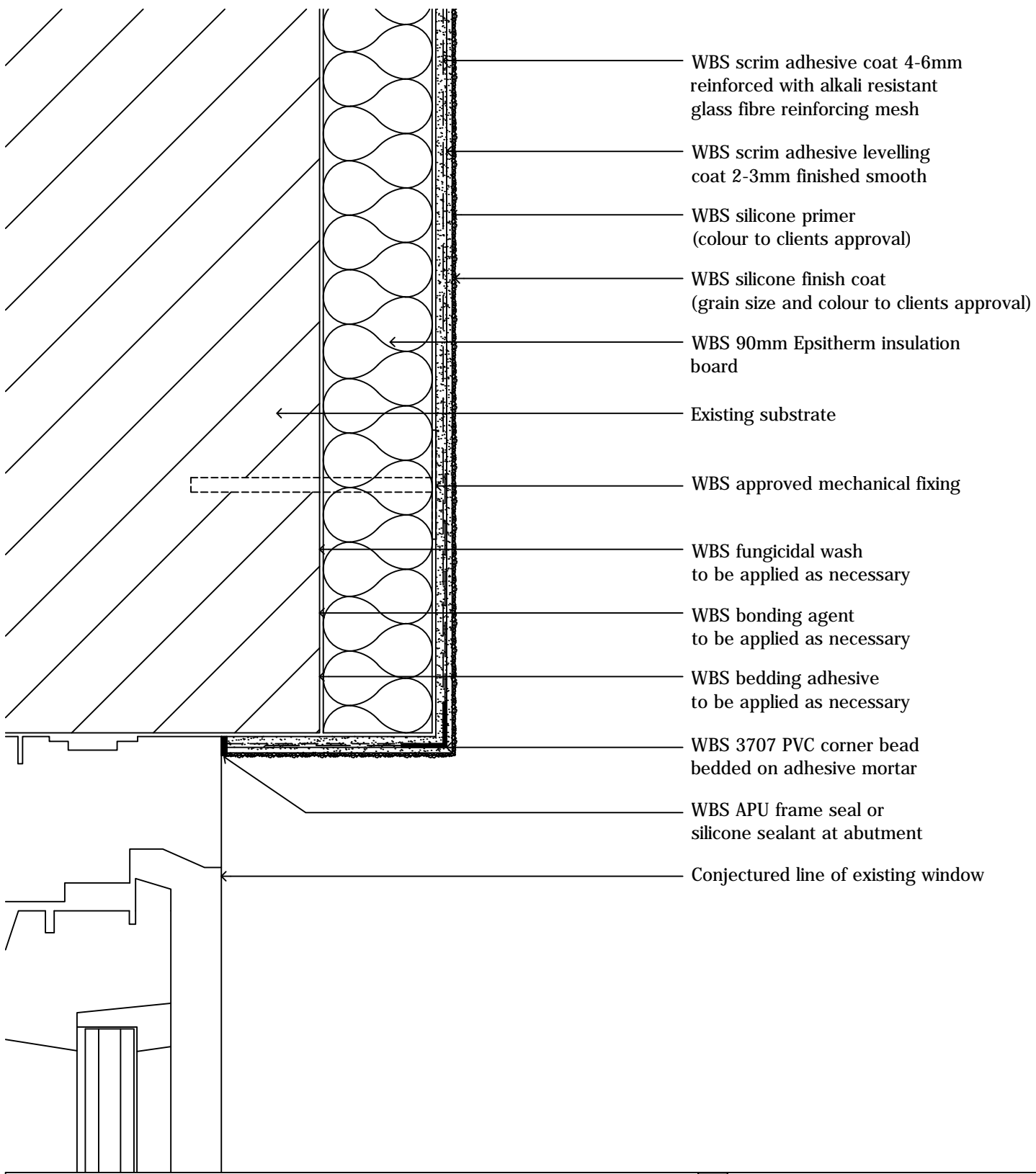
scale. nts

drawing no. **MASONRY-EWI-SILICONE-04**

drawing set. 04



1 Kid Glove Road, Golborne Enterprise Park,  
Golborne, Greater Manchester, WA3 3GS  
Tel: 01942 717100 Fax: 01942 717101  
Web: [www.wbs-ltd.co.uk](http://www.wbs-ltd.co.uk)  
E-mail: [technical@wbs-ltd.co.uk](mailto:technical@wbs-ltd.co.uk)



- WBS scrim adhesive coat 4-6mm reinforced with alkali resistant glass fibre reinforcing mesh
- WBS scrim adhesive levelling coat 2-3mm finished smooth
- WBS silicone primer (colour to clients approval)
- WBS silicone finish coat (grain size and colour to clients approval)
- WBS 90mm Epsitherm insulation board
- Existing substrate
- WBS approved mechanical fixing
- WBS fungicidal wash to be applied as necessary
- WBS bonding agent to be applied as necessary
- WBS bedding adhesive to be applied as necessary
- WBS 3707 PVC corner bead bedded on adhesive mortar
- WBS APU frame seal or silicone sealant at abutment
- Conjectured line of existing window

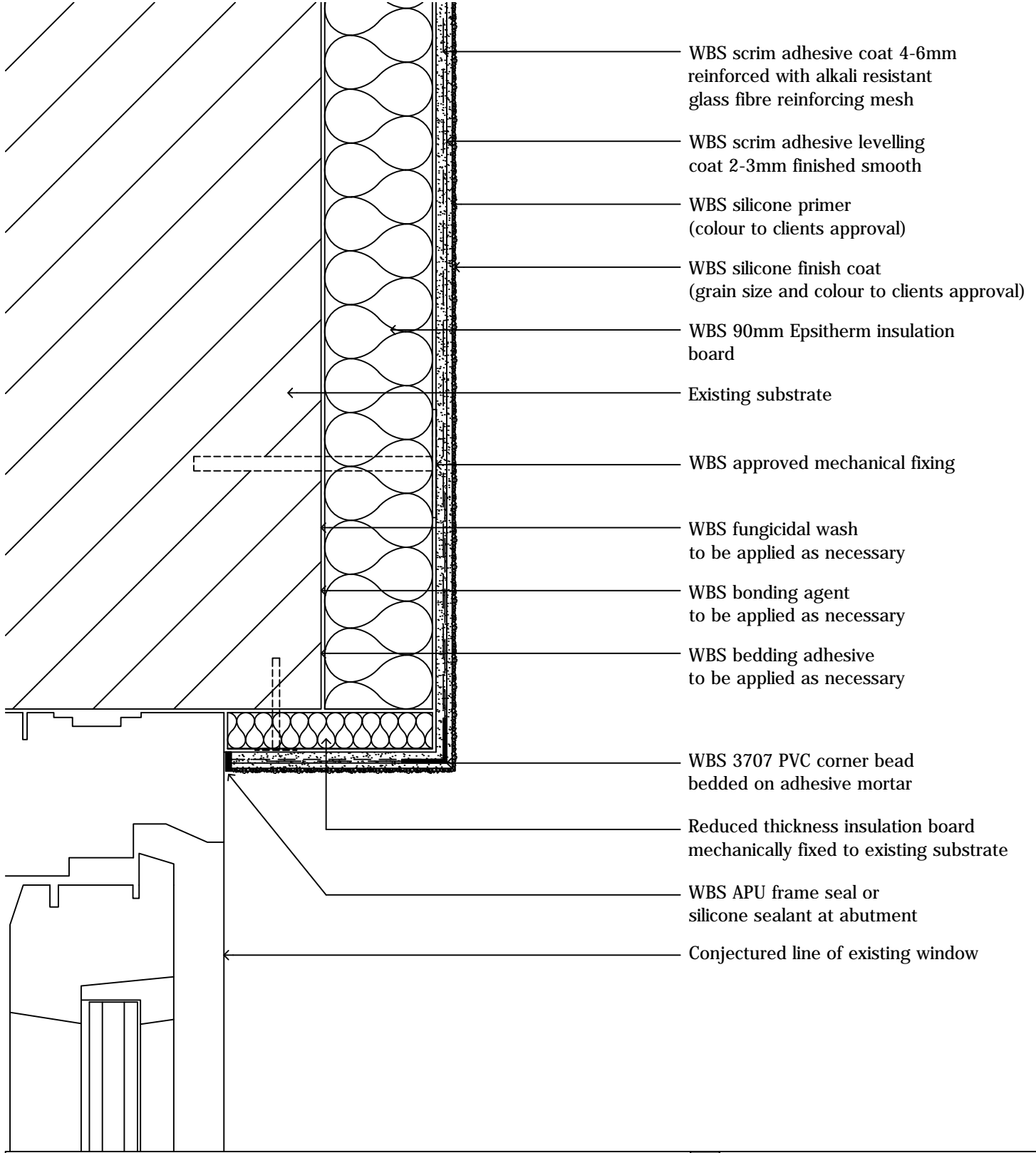
drawing. **Window head detail 1 of 2**

date. February 2013      revision. -      drawn by. RC      scale. nts

drawing no. **MASONRY-EWI-SILICONE-05A** drawing set. 04

**wetherby**  
creating a greener future

1 Kid Glove Road, Golborne Enterprise Park,  
Golborne, Greater Manchester, WA3 3GS  
Tel: 01942 717100 Fax: 01942 717101  
Web: [www.wbs-ltd.co.uk](http://www.wbs-ltd.co.uk)  
E-mail: [technical@wbs-ltd.co.uk](mailto:technical@wbs-ltd.co.uk)



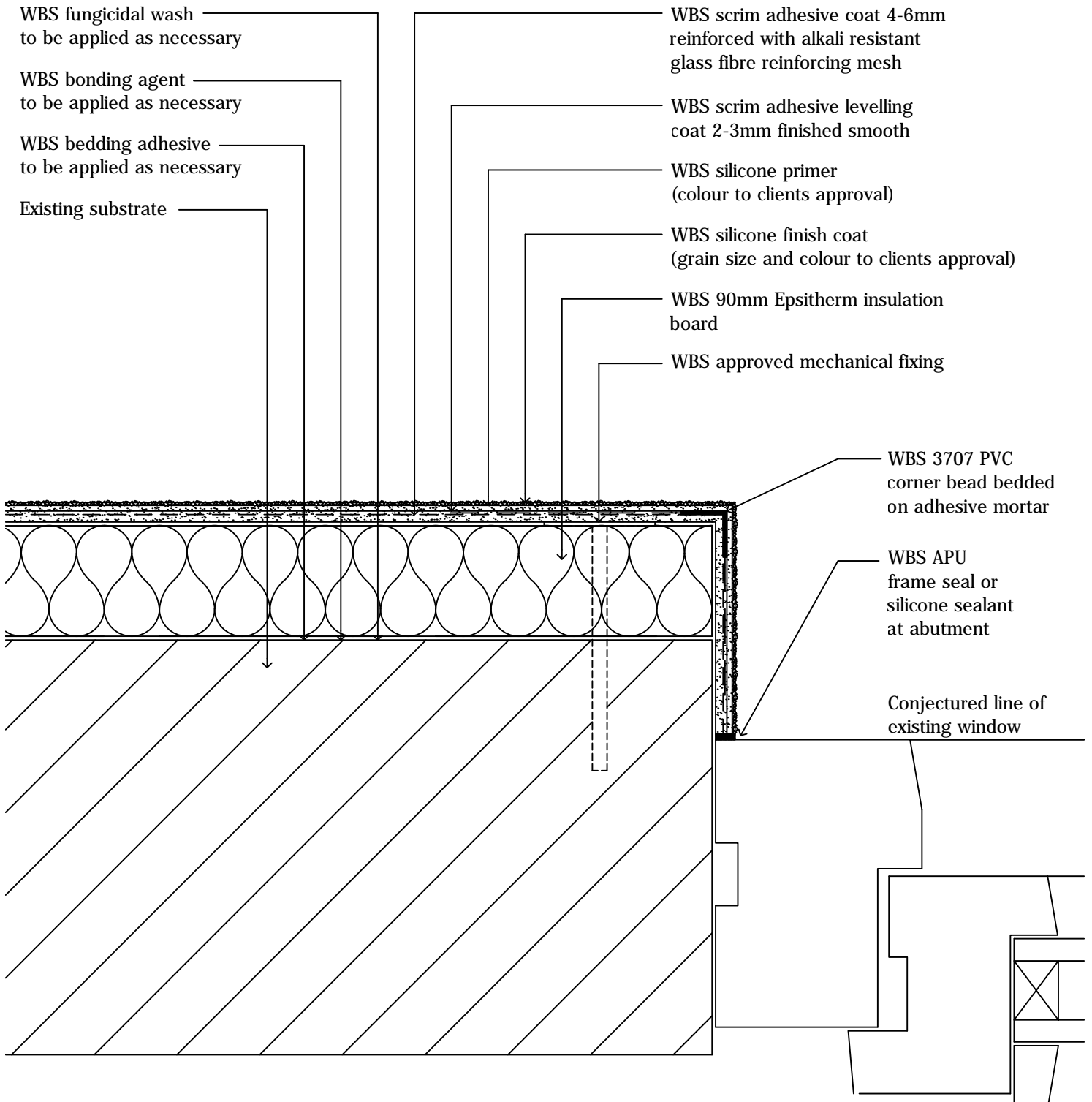
- WBS scrim adhesive coat 4-6mm reinforced with alkali resistant glass fibre reinforcing mesh
- WBS scrim adhesive levelling coat 2-3mm finished smooth
- WBS silicone primer (colour to clients approval)
- WBS silicone finish coat (grain size and colour to clients approval)
- WBS 90mm Epsitherm insulation board
- Existing substrate
- WBS approved mechanical fixing
- WBS fungicidal wash to be applied as necessary
- WBS bonding agent to be applied as necessary
- WBS bedding adhesive to be applied as necessary
- WBS 3707 PVC corner bead bedded on adhesive mortar
- Reduced thickness insulation board mechanically fixed to existing substrate
- WBS APU frame seal or silicone sealant at abutment
- Conjectured line of existing window

drawing. **Window head detail 2 of 2**

date. February 2013      revision. -      drawn by. RC      scale. nts

drawing no. **MASONRY-EWI-SILICONE-05B** drawing set. 04

1 Kid Glove Road, Golborne Enterprise Park,  
 Golborne, Greater Manchester, WA3 3GS  
 Tel: 01942 717100 Fax: 01942 717101  
 Web: www.wbs-ltd.co.uk  
 E-mail: technical@wbs-ltd.co.uk



drawing. **Window jamb detail 1 of 2**

date. **February 2013**

revision. -

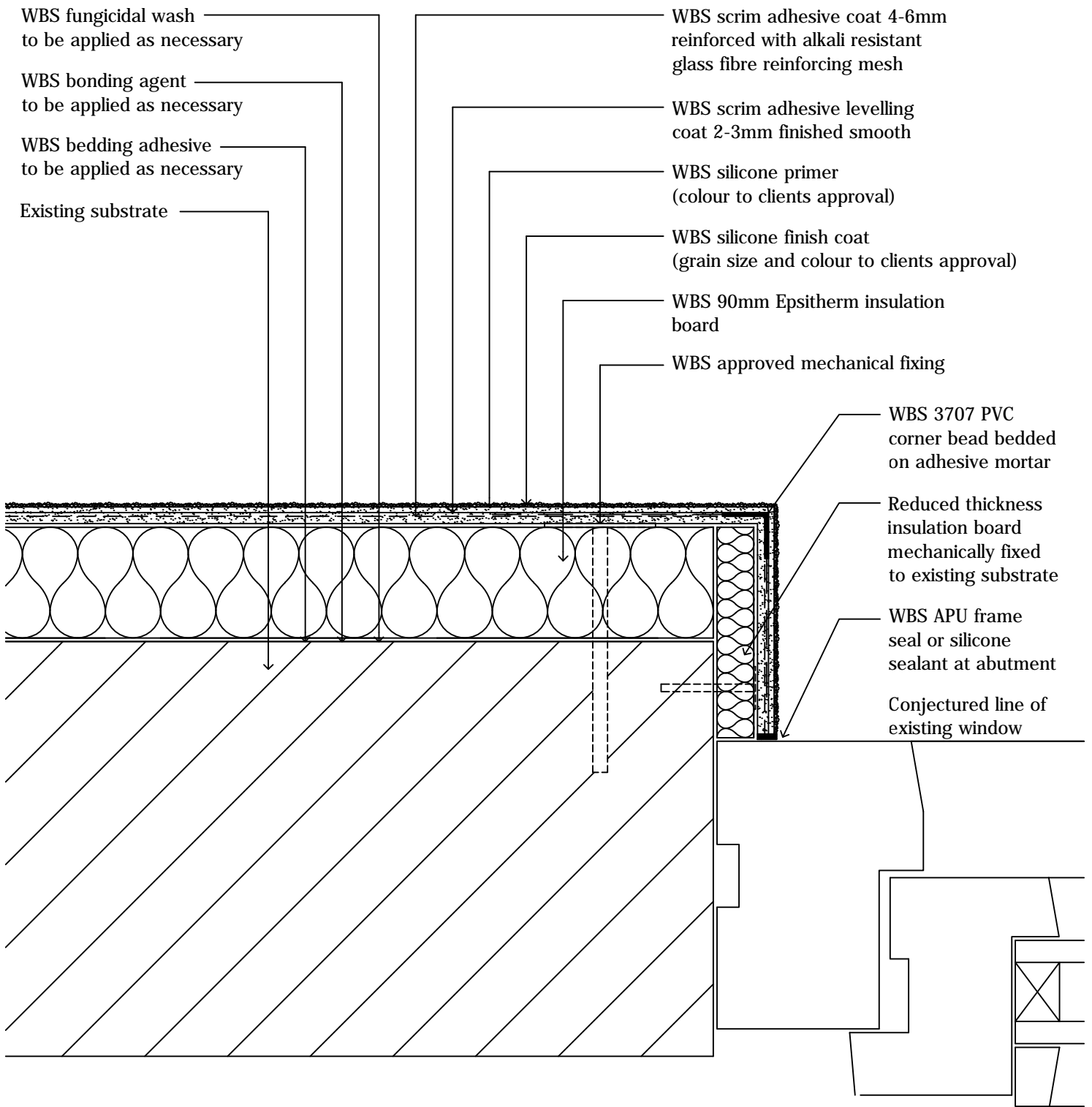
drawn by. **RC**

scale. **nts**

drawing no. **MASONRY-EWI-SILICONE-06A** drawing set. **04**



1 Kid Glove Road, Golborne Enterprise Park,  
 Golborne, Greater Manchester, WA3 3GS  
 Tel: 01942 717100 Fax: 01942 717101  
 Web: [www.wbs-ltd.co.uk](http://www.wbs-ltd.co.uk)  
 E-mail: [technical@wbs-ltd.co.uk](mailto:technical@wbs-ltd.co.uk)



drawing. **Window jamb detail 2 of 2**

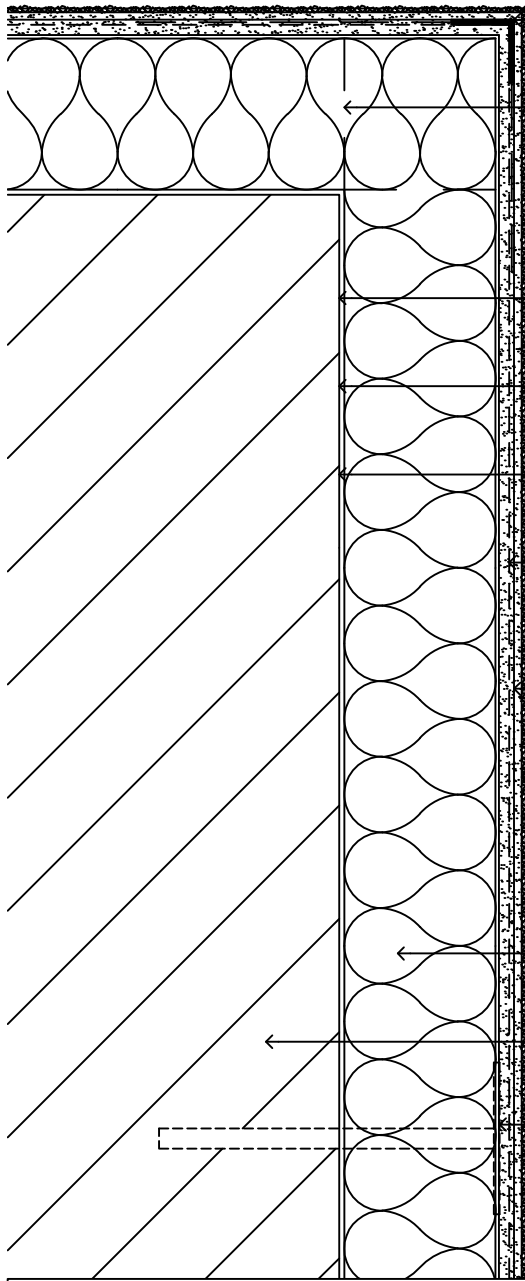
date. February 2013      revision. -      drawn by. RC      scale. nts

drawing no. **MASONRY-EWI-SILICONE-06B** drawing set. 04



1 Kid Glove Road, Golborne Enterprise Park,  
 Golborne, Greater Manchester, WA3 3GS  
 Tel: 01942 717100 Fax: 01942 717101  
 Web: www.wbs-ltd.co.uk  
 E-mail: technical@wbs-ltd.co.uk





- WBS 3707 PVC corner bead bedded on adhesive mortar
- Staggered insulation board joints at building corner
- WBS fungicidal wash to be applied as necessary
- WBS bonding agent to be applied as necessary
- WBS bedding adhesive to be applied as necessary
- WBS scrim adhesive coat 4-6mm reinforced with alkali resistant glass fibre reinforcing mesh
- WBS scrim adhesive levelling coat 2-3mm finished smooth
- WBS silicone primer (colour to clients approval)
- WBS silicone finish coat (grain size and colour to clients approval)
- WBS 90mm Epsitherm insulation board
- Existing substrate
- WBS approved mechanical fixing

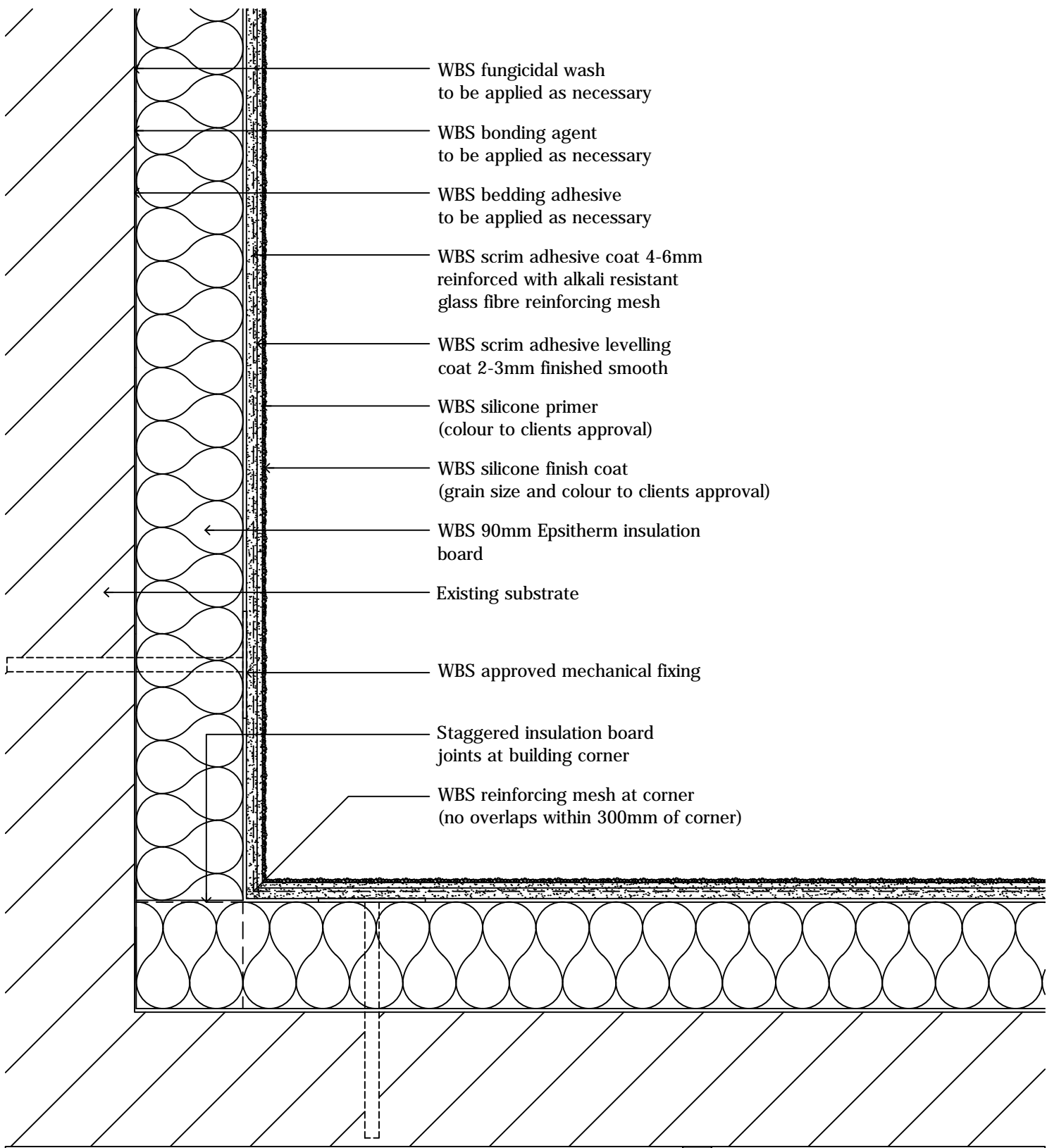
drawing. **Building corner detail**

date. February 2013      revision. -      drawn by. RC      scale. nts

drawing no. **MASONRY-EWI-SILICONE-07A** drawing set. 04



1 Kid Glove Road, Golborne Enterprise Park,  
 Golborne, Greater Manchester, WA3 3GS  
 Tel: 01942 717100 Fax: 01942 717101  
 Web: www.wbs-ltd.co.uk  
 E-mail: technical@wbs-ltd.co.uk



- WBS fungicidal wash  
to be applied as necessary
- WBS bonding agent  
to be applied as necessary
- WBS bedding adhesive  
to be applied as necessary
- WBS scrim adhesive coat 4-6mm  
reinforced with alkali resistant  
glass fibre reinforcing mesh
- WBS scrim adhesive levelling  
coat 2-3mm finished smooth
- WBS silicone primer  
(colour to clients approval)
- WBS silicone finish coat  
(grain size and colour to clients approval)
- WBS 90mm Epsitherm insulation  
board
- Existing substrate
- WBS approved mechanical fixing
- Staggered insulation board  
joints at building corner
- WBS reinforcing mesh at corner  
(no overlaps within 300mm of corner)

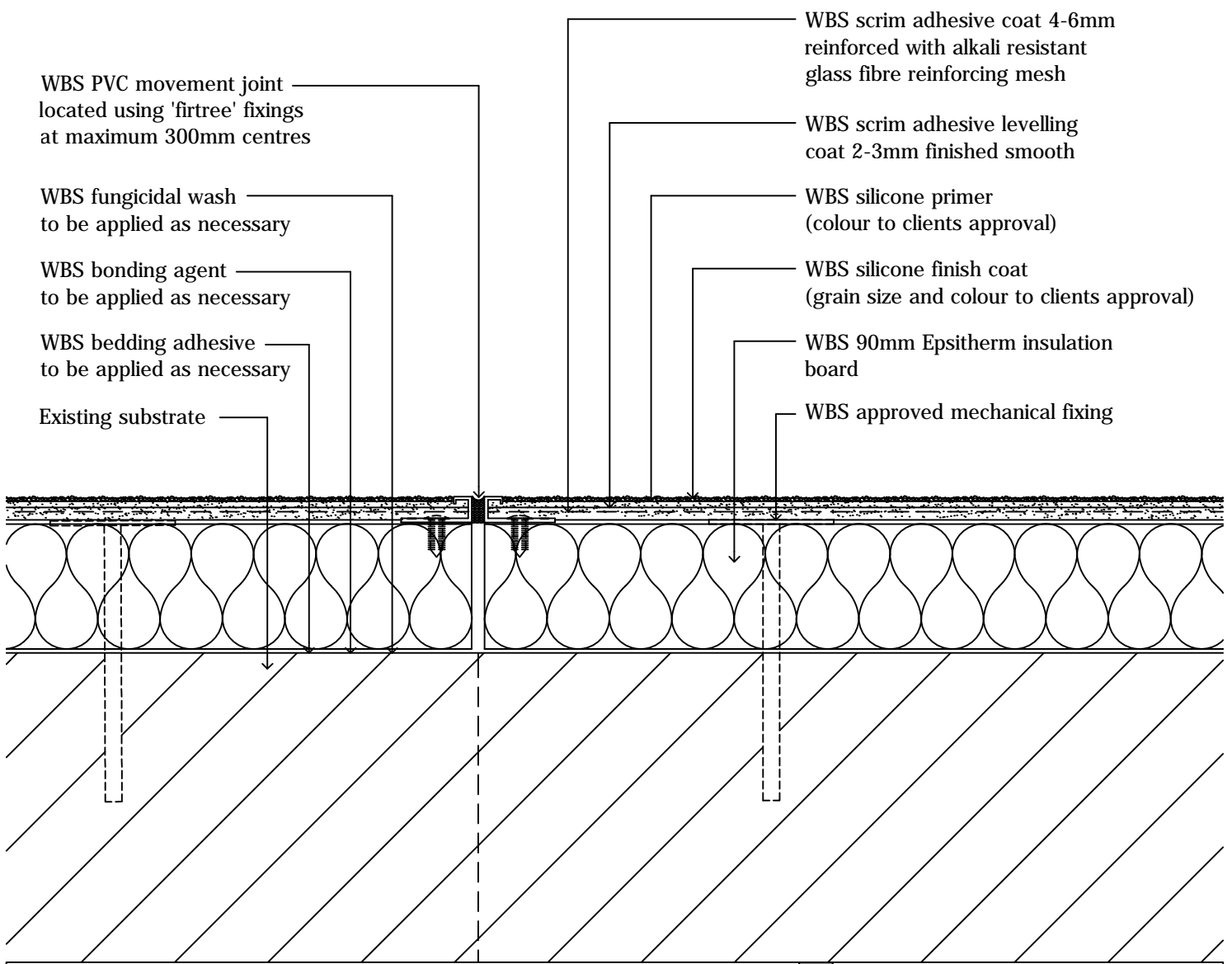
drawing. **Internal building corner detail**

date. February 2013      revision. -      drawn by. RC      scale. nts

drawing no. **MASONRY-EWI-SILICONE-07B** drawing set. 04



1 Kid Glove Road, Golborne Enterprise Park,  
Golborne, Greater Manchester, WA3 3GS  
Tel: 01942 717100 Fax: 01942 717101  
Web: www.wbs-ltd.co.uk  
E-mail: technical@wbs-ltd.co.uk



WBS PVC movement joint  
located using 'firtree' fixings  
at maximum 300mm centres

WBS fungicidal wash  
to be applied as necessary

WBS bonding agent  
to be applied as necessary

WBS bedding adhesive  
to be applied as necessary

Existing substrate

WBS scrim adhesive coat 4-6mm  
reinforced with alkali resistant  
glass fibre reinforcing mesh

WBS scrim adhesive levelling  
coat 2-3mm finished smooth

WBS silicone primer  
(colour to clients approval)

WBS silicone finish coat  
(grain size and colour to clients approval)

WBS 90mm Epsitherm insulation  
board

WBS approved mechanical fixing

drawing. **Movement joint detail**

date. **February 2013**

revision. -

drawn by. **RC**

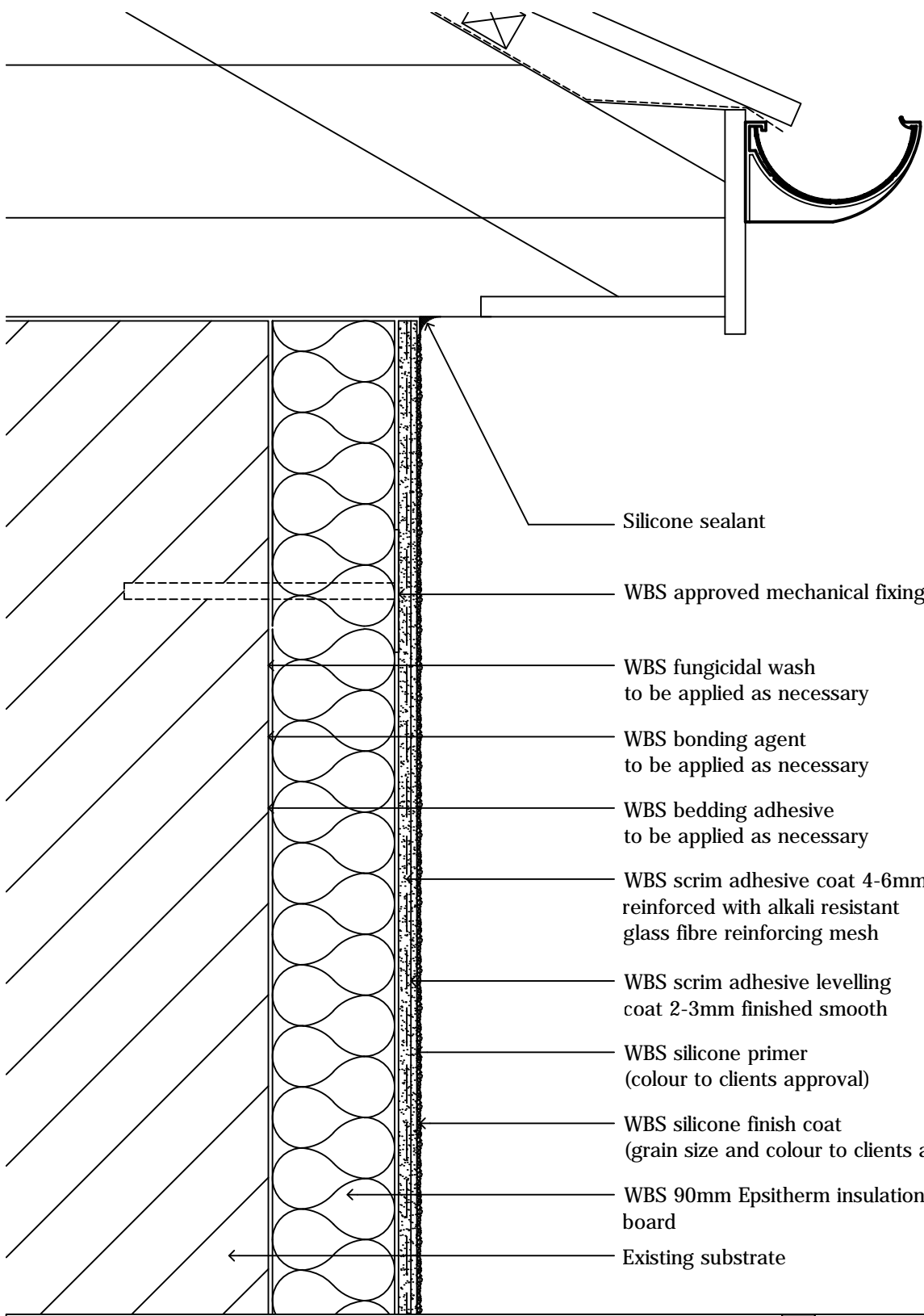
scale. **nts**

drawing no. **MASONRY-EWI-SILICONE-08**

drawing set. **04**



1 Kid Glove Road, Golborne Enterprise Park,  
Golborne, Greater Manchester, WA3 3GS  
Tel: 01942 717100 Fax: 01942 717101  
Web: [www.wbs-ltd.co.uk](http://www.wbs-ltd.co.uk)  
E-mail: [technical@wbs-ltd.co.uk](mailto:technical@wbs-ltd.co.uk)



Silicone sealant

WBS approved mechanical fixing

WBS fungicidal wash  
to be applied as necessary

WBS bonding agent  
to be applied as necessary

WBS bedding adhesive  
to be applied as necessary

WBS scrim adhesive coat 4-6mm  
reinforced with alkali resistant  
glass fibre reinforcing mesh

WBS scrim adhesive levelling  
coat 2-3mm finished smooth

WBS silicone primer  
(colour to clients approval)

WBS silicone finish coat  
(grain size and colour to clients approval)

WBS 90mm Epsitherm insulation  
board

Existing substrate

drawing. **Roof abutment detail**

date. February 2013

revision. -

drawn by. RC

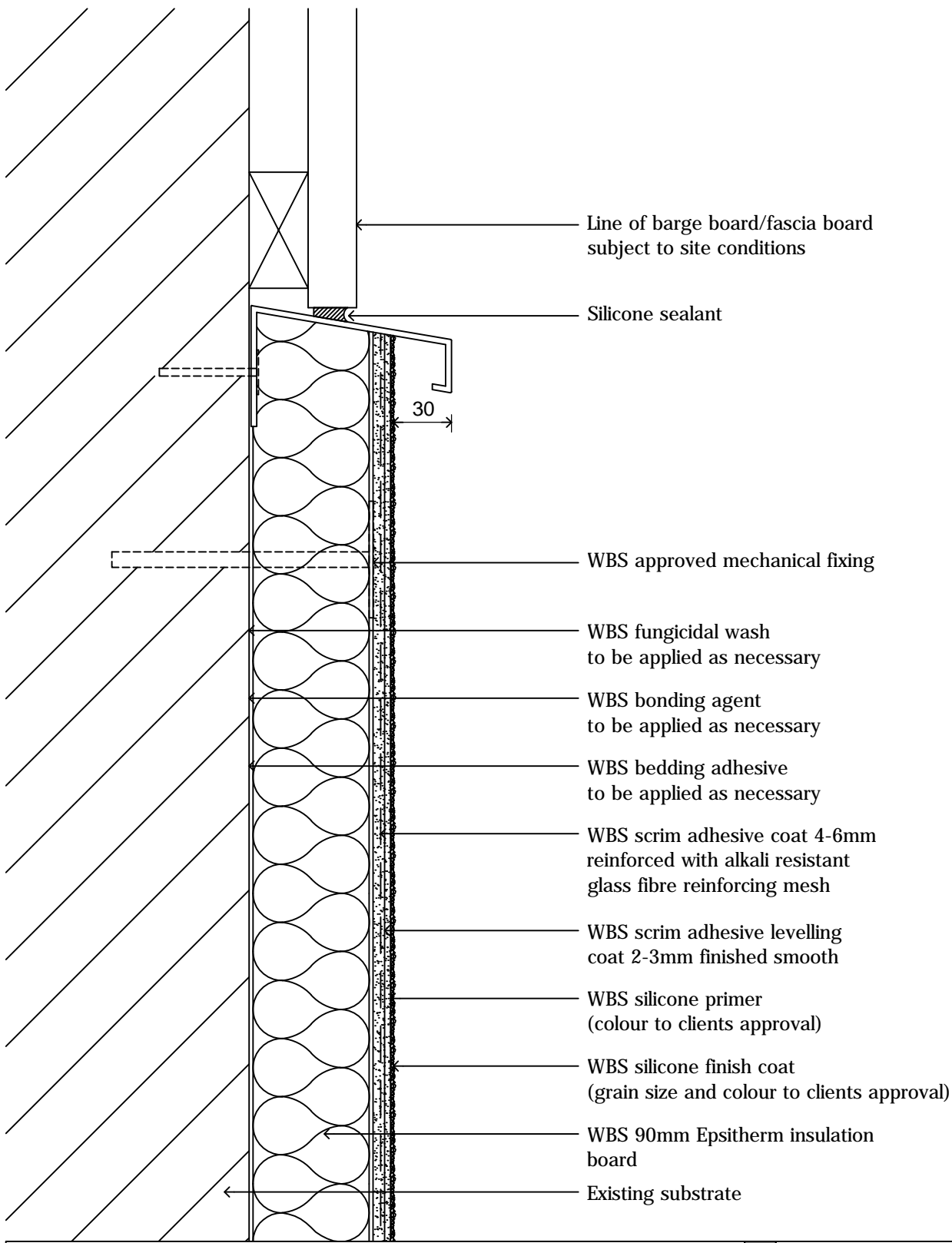
scale. nts

drawing no. **MASONRY-EWI-SILICONE-09**

drawing set. 04



1 Kid Glove Road, Golborne Enterprise Park,  
Golborne, Greater Manchester, WA3 3GS  
Tel: 01942 717100 Fax: 01942 717101  
Web: www.wbs-ltd.co.uk  
E-mail: technical@wbs-ltd.co.uk



drawing. **Verge trim detail**

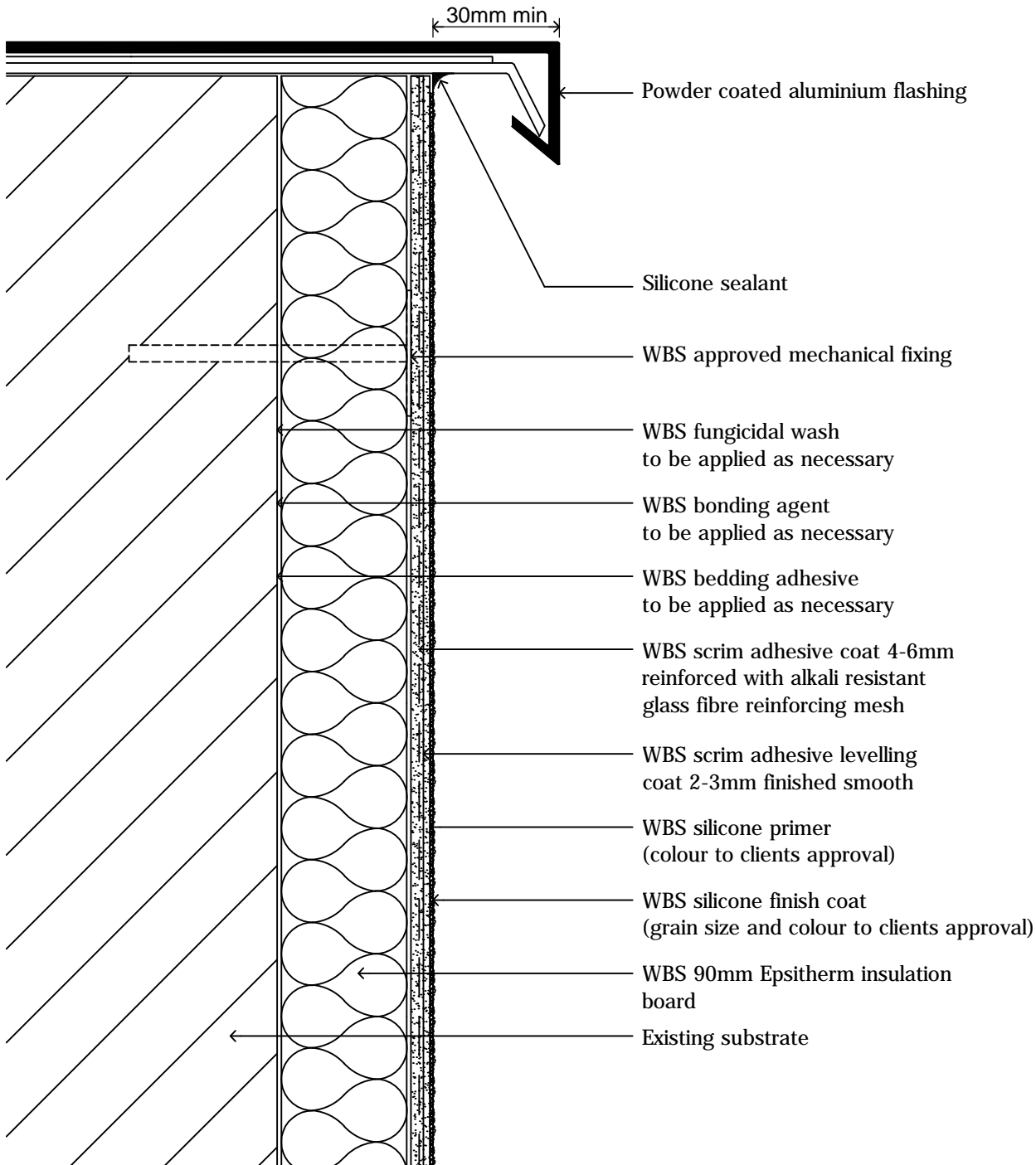
date. **February 2013**      revision. -      drawn by. **RC**      scale. **nts**

drawing no. **MASONRY-EWI-SILICONE-10**      drawing set. **04**



**wetherby**  
creating a greener future

1 Kid Glove Road, Golborne Enterprise Park,  
Golborne, Greater Manchester, WA3 3GS  
Tel: 01942 717100 Fax: 01942 717101  
Web: [www.wbs-ltd.co.uk](http://www.wbs-ltd.co.uk)  
E-mail: [technical@wbs-ltd.co.uk](mailto:technical@wbs-ltd.co.uk)



drawing. **Parapet detail**

date. **February 2013**

revision. -

drawn by. **RC**

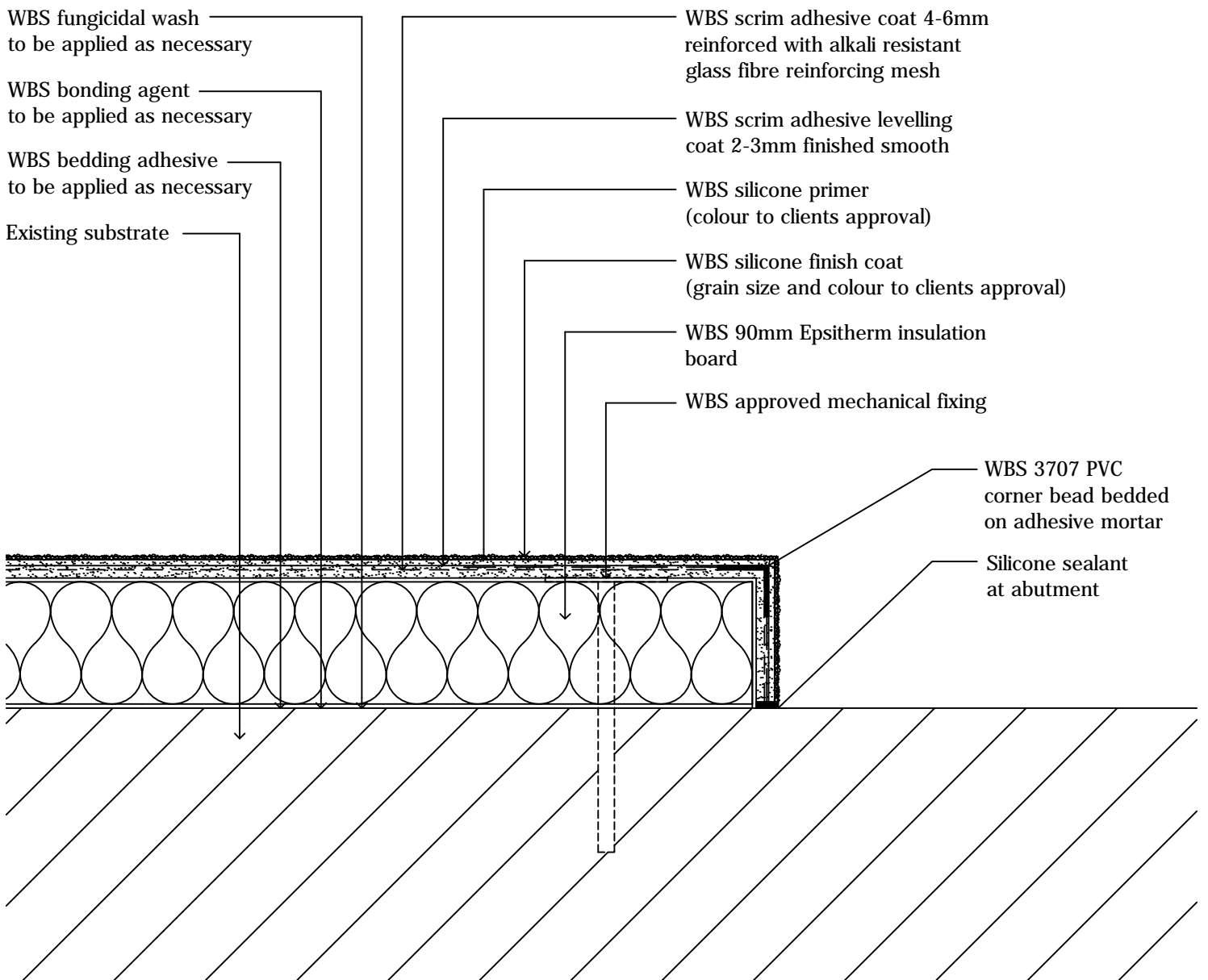
scale. **nts**

drawing no. **MASONRY-EWI-SILICONE- 1 1**

drawing set. **04**



1 Kid Glove Road, Golborne Enterprise Park,  
 Golborne, Greater Manchester, WA3 3GS  
 Tel: 01942 717100 Fax: 01942 717101  
 Web: [www.wbs-ltd.co.uk](http://www.wbs-ltd.co.uk)  
 E-mail: [technical@wbs-ltd.co.uk](mailto:technical@wbs-ltd.co.uk)



drawing. **Party wall detail 1 of 2**

date. **February 2013**

revision. -

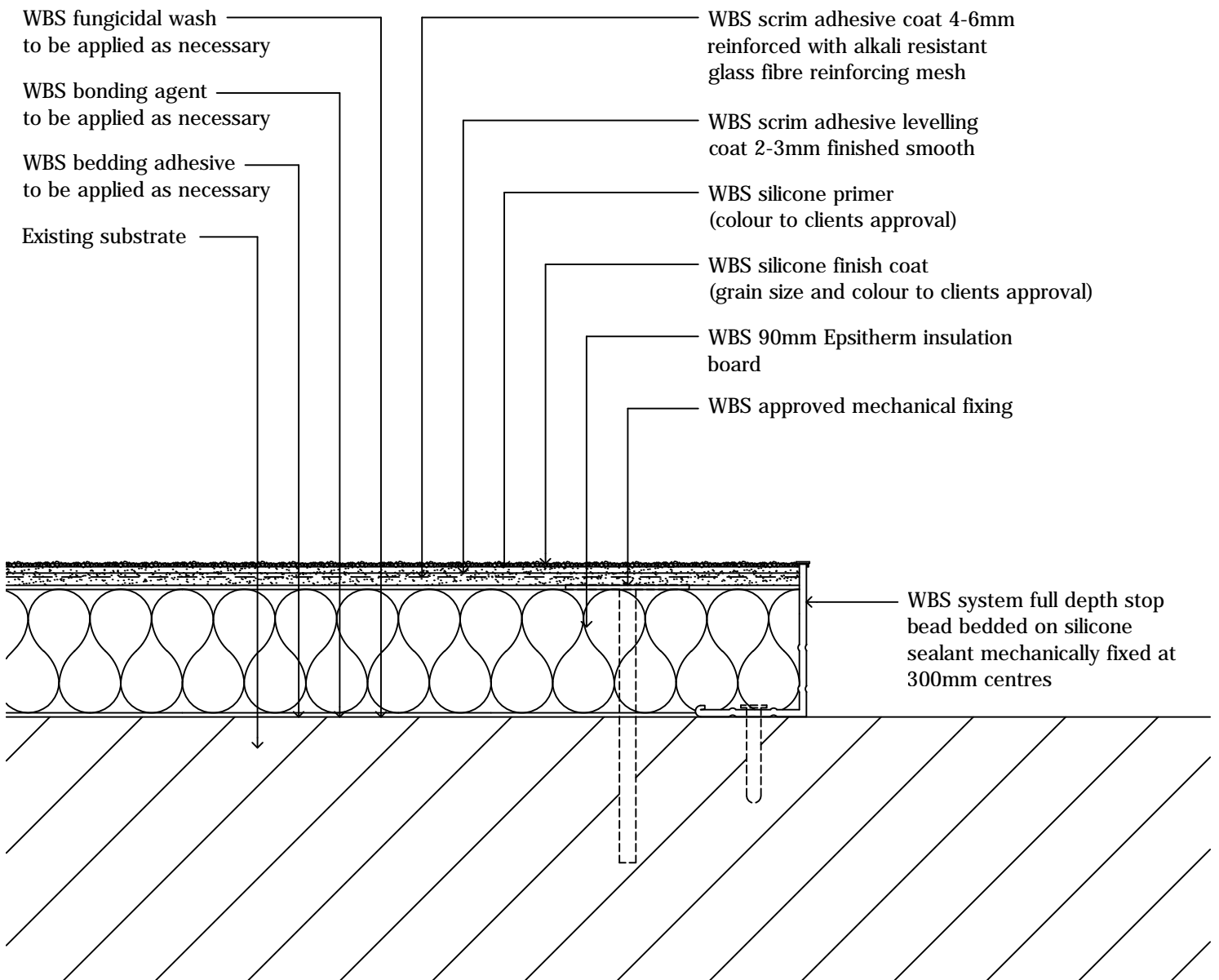
drawn by. **RC**

scale. **nts**

drawing no. **MASONRY-EWI-SILICONE-12A** drawing set. **04**



1 Kid Glove Road, Golborne Enterprise Park,  
Golborne, Greater Manchester, WA3 3GS  
Tel: 01942 717100 Fax: 01942 717101  
Web: [www.wbs-ltd.co.uk](http://www.wbs-ltd.co.uk)  
E-mail: [technical@wbs-ltd.co.uk](mailto:technical@wbs-ltd.co.uk)



drawing. **Party wall detail 2 of 2**

date. **February 2013**

revision. -

drawn by. **RC**

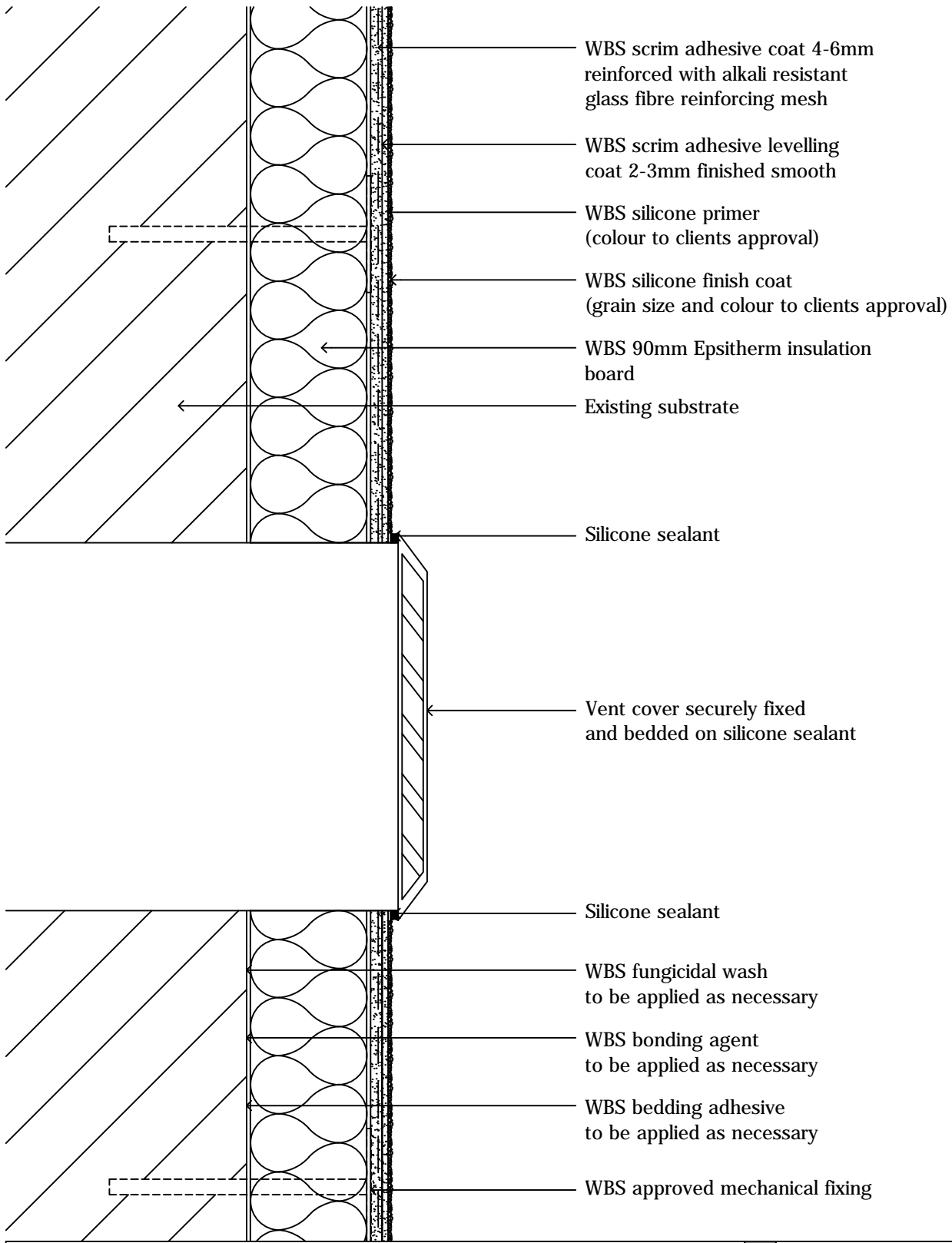
scale. **nts**

drawing no. **MASONRY-EWI-SILICONE-12B** drawing set. **04**



1 Kid Glove Road, Golborne Enterprise Park,  
Golborne, Greater Manchester, WA3 3GS  
Tel: 01942 717100 Fax: 01942 717101  
Web: [www.wbs-ltd.co.uk](http://www.wbs-ltd.co.uk)  
E-mail: [technical@wbs-ltd.co.uk](mailto:technical@wbs-ltd.co.uk)





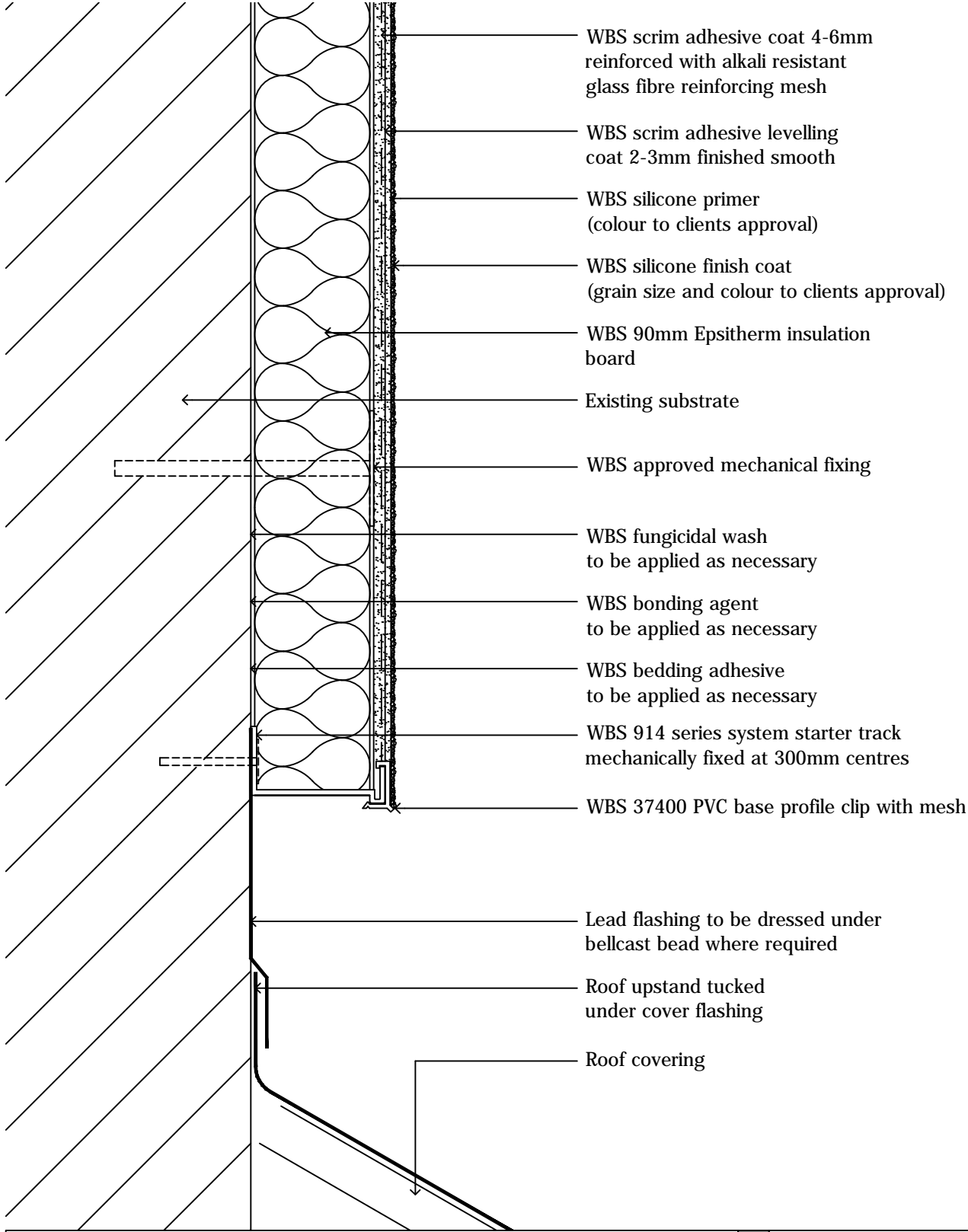
drawing. **Air vent detail**

date. February 2013      revision. -      drawn by. RC      scale. nts

drawing no. **MASONRY-EWI-SILICONE-13**      drawing set. 04



1 Kid Glove Road, Golborne Enterprise Park,  
 Golborne, Greater Manchester, WA3 3GS  
 Tel: 01942 717100 Fax: 01942 717101  
 Web: www.wbs-ltd.co.uk  
 E-mail: technical@wbs-ltd.co.uk



- WBS scrim adhesive coat 4-6mm reinforced with alkali resistant glass fibre reinforcing mesh
- WBS scrim adhesive levelling coat 2-3mm finished smooth
- WBS silicone primer (colour to clients approval)
- WBS silicone finish coat (grain size and colour to clients approval)
- WBS 90mm Epsitherm insulation board
- Existing substrate
- WBS approved mechanical fixing
- WBS fungicidal wash to be applied as necessary
- WBS bonding agent to be applied as necessary
- WBS bedding adhesive to be applied as necessary
- WBS 914 series system starter track mechanically fixed at 300mm centres
- WBS 37400 PVC base profile clip with mesh
- Lead flashing to be dressed under bellcast bead where required
- Roof upstand tucked under cover flashing
- Roof covering

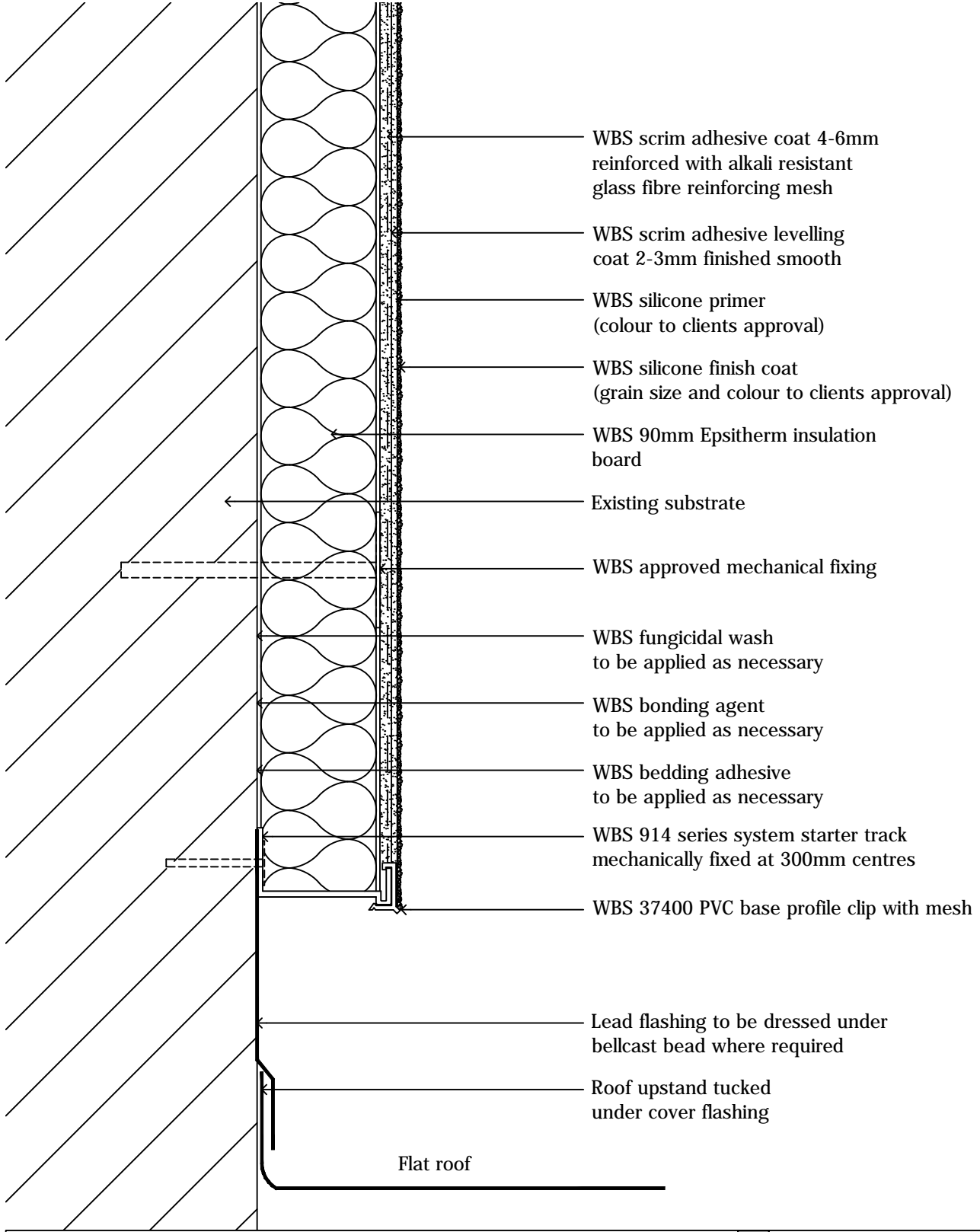
drawing. **Roof junction detail 1 of 2**

date. February 2013      revision. -      drawn by. RC      scale. nts

drawing no. **MASONRY-EWI-SILICONE-14A** drawing set. 04



1 Kid Glove Road, Golborne Enterprise Park,  
 Golborne, Greater Manchester, WA3 3GS  
 Tel: 01942 717100 Fax: 01942 717101  
 Web: www.wbs-ltd.co.uk  
 E-mail: technical@wbs-ltd.co.uk



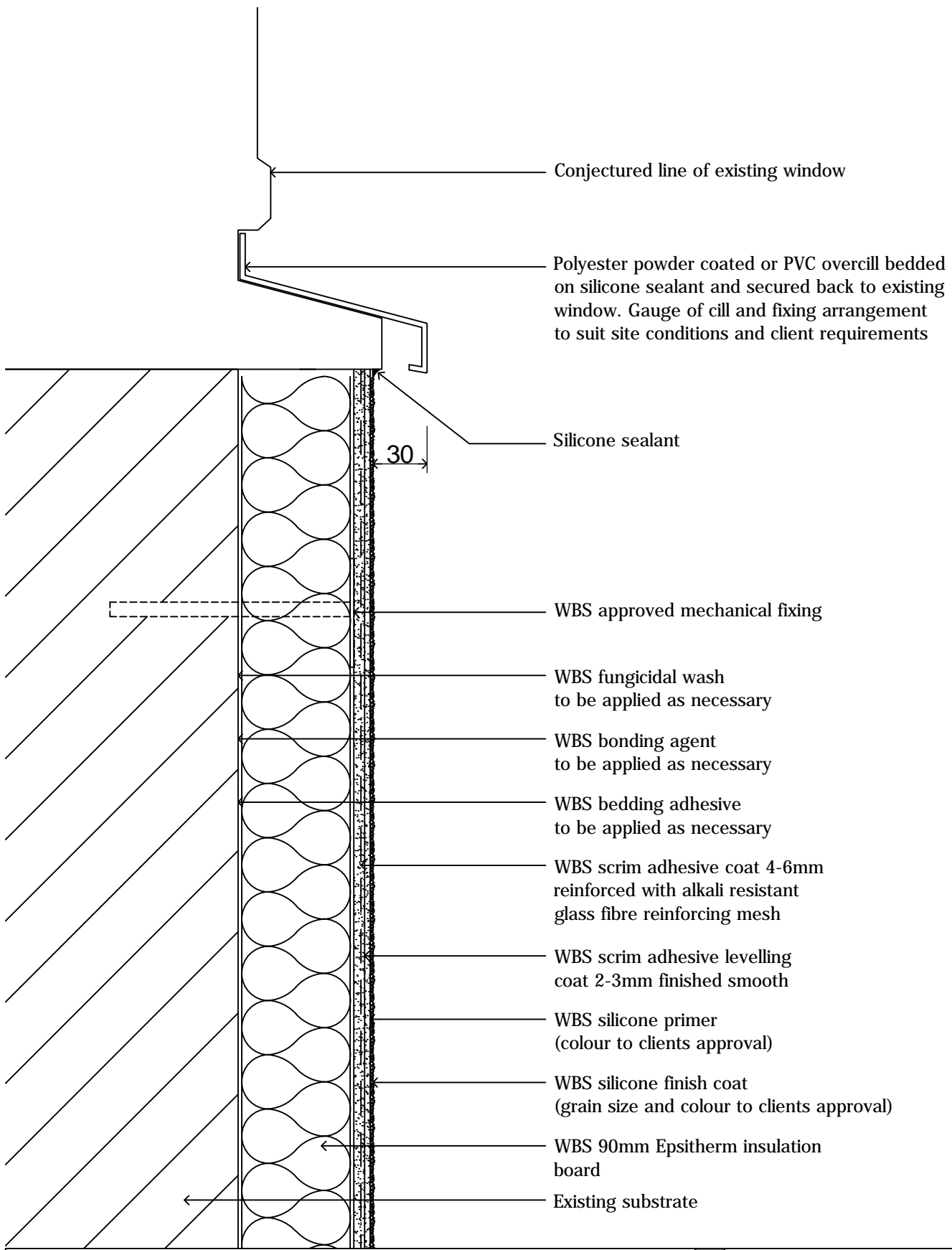
drawing. **Roof junction detail 2 of 2**

date. February 2013      revision. -      drawn by. RC      scale. nts

drawing no. **MASONRY-EWI-SILICONE-14B** drawing set. 04



1 Kid Glove Road, Golborne Enterprise Park,  
 Golborne, Greater Manchester, WA3 3GS  
 Tel: 01942 717100 Fax: 01942 717101  
 Web: www.wbs-ltd.co.uk  
 E-mail: technical@wbs-ltd.co.uk



Conjectured line of existing window

Polyester powder coated or PVC overcill bedded on silicone sealant and secured back to existing window. Gauge of cill and fixing arrangement to suit site conditions and client requirements

Silicone sealant

30

WBS approved mechanical fixing

WBS fungicidal wash to be applied as necessary

WBS bonding agent to be applied as necessary

WBS bedding adhesive to be applied as necessary

WBS scrim adhesive coat 4-6mm reinforced with alkali resistant glass fibre reinforcing mesh

WBS scrim adhesive levelling coat 2-3mm finished smooth

WBS silicone primer (colour to clients approval)

WBS silicone finish coat (grain size and colour to clients approval)

WBS 90mm Epsitherm insulation board

Existing substrate

drawing. **Overcill detail**

date. February 2013

revision. -

drawn by. RC

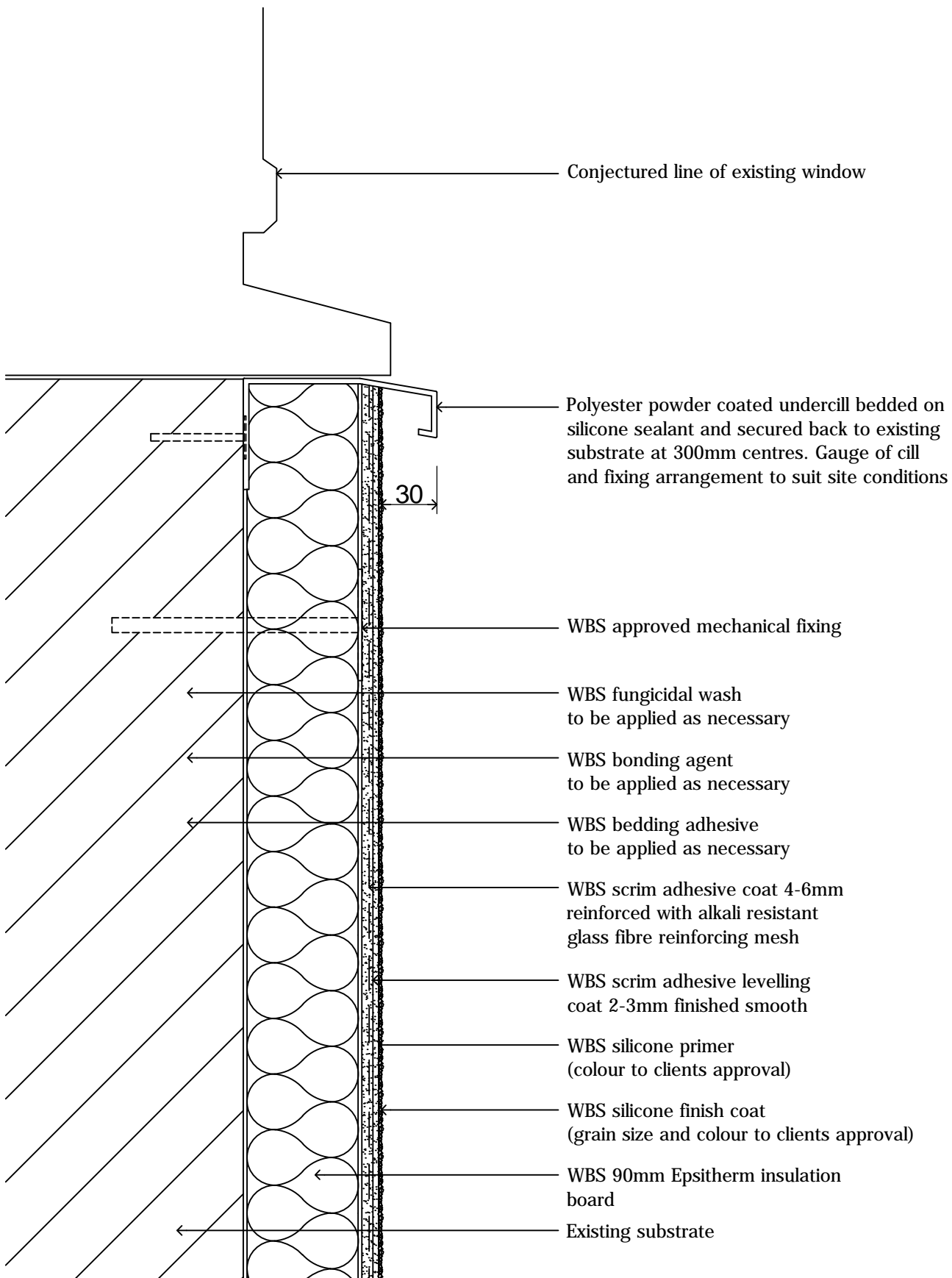
scale. nts

drawing no. **MASONRY-EWI-SILICONE-15**

drawing set. 04



1 Kid Glove Road, Golborne Enterprise Park,  
 Golborne, Greater Manchester, WA3 3GS  
 Tel: 01942 717100 Fax: 01942 717101  
 Web: www.wbs-ltd.co.uk  
 E-mail: technical@wbs-ltd.co.uk



drawing. **Undercill detail**

date. February 2013

revision. -

drawn by. RC

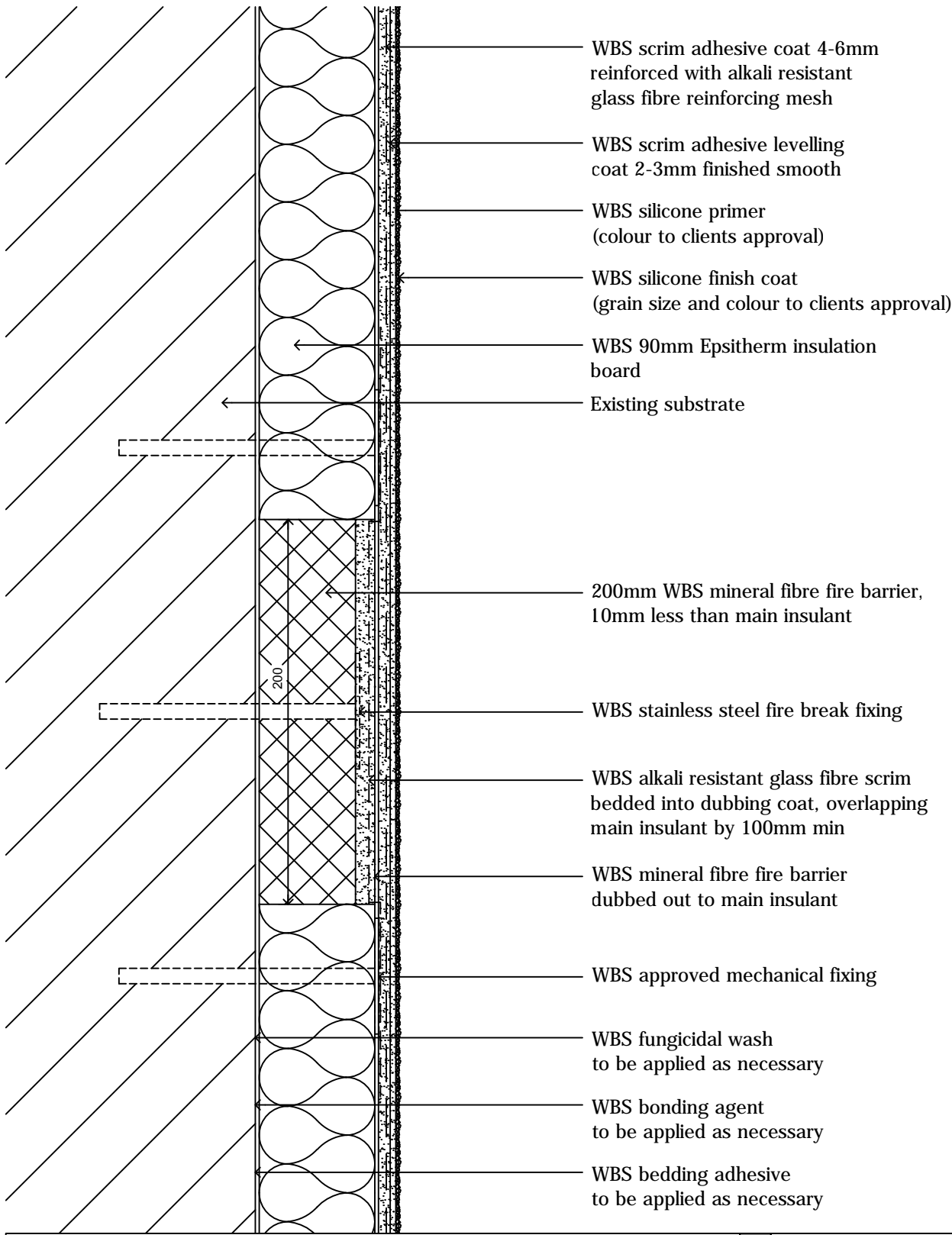
scale. nts

drawing no. **MASONRY-EWI-SILICONE-16**

drawing set. 04



1 Kid Glove Road, Golborne Enterprise Park,  
Golborne, Greater Manchester, WA3 3GS  
Tel: 01942 717100 Fax: 01942 717101  
Web: www.wbs-ltd.co.uk  
E-mail: technical@wbs-ltd.co.uk



- WBS scrim adhesive coat 4-6mm reinforced with alkali resistant glass fibre reinforcing mesh
- WBS scrim adhesive levelling coat 2-3mm finished smooth
- WBS silicone primer (colour to clients approval)
- WBS silicone finish coat (grain size and colour to clients approval)
- WBS 90mm Epsitherm insulation board
- Existing substrate
- 200mm WBS mineral fibre fire barrier, 10mm less than main insulant
- WBS stainless steel fire break fixing
- WBS alkali resistant glass fibre scrim bedded into dubbing coat, overlapping main insulant by 100mm min
- WBS mineral fibre fire barrier dubbed out to main insulant
- WBS approved mechanical fixing
- WBS fungicidal wash to be applied as necessary
- WBS bonding agent to be applied as necessary
- WBS bedding adhesive to be applied as necessary

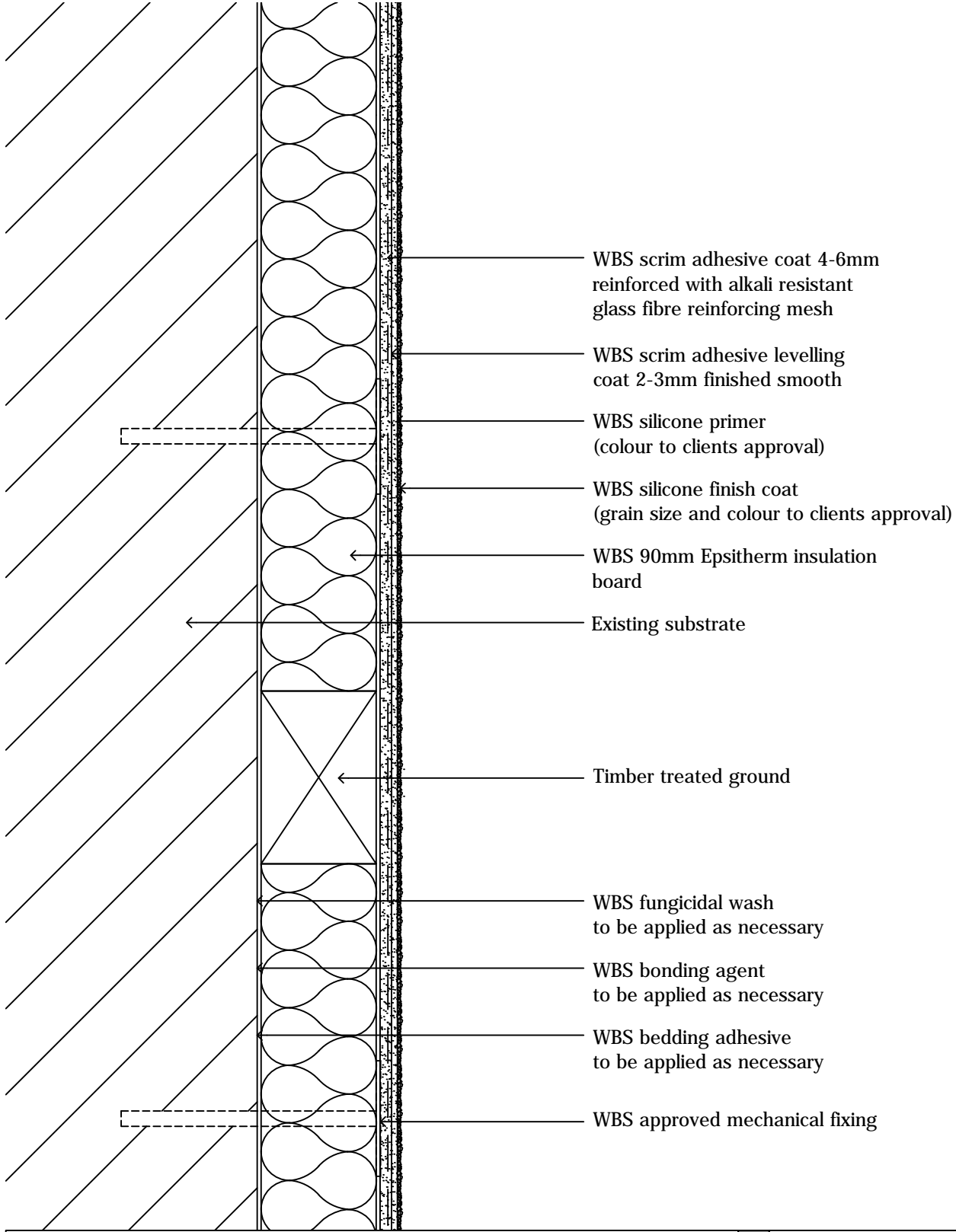
drawing. **Fire barrier detail**

date. February 2013      revision. -      drawn by. RC      scale. nts

drawing no. **MASONRY-EWI-SILICONE-17**      drawing set. 04



1 Kid Glove Road, Golborne Enterprise Park,  
 Golborne, Greater Manchester, WA3 3GS  
 Tel: 01942 717100 Fax: 01942 717101  
 Web: www.wbs-ltd.co.uk  
 E-mail: technical@wbs-ltd.co.uk



- WBS scrim adhesive coat 4-6mm reinforced with alkali resistant glass fibre reinforcing mesh
- WBS scrim adhesive levelling coat 2-3mm finished smooth
- WBS silicone primer (colour to clients approval)
- WBS silicone finish coat (grain size and colour to clients approval)
- WBS 90mm Epsitherm insulation board
- Existing substrate
- Timber treated ground
- WBS fungicidal wash to be applied as necessary
- WBS bonding agent to be applied as necessary
- WBS bedding adhesive to be applied as necessary
- WBS approved mechanical fixing

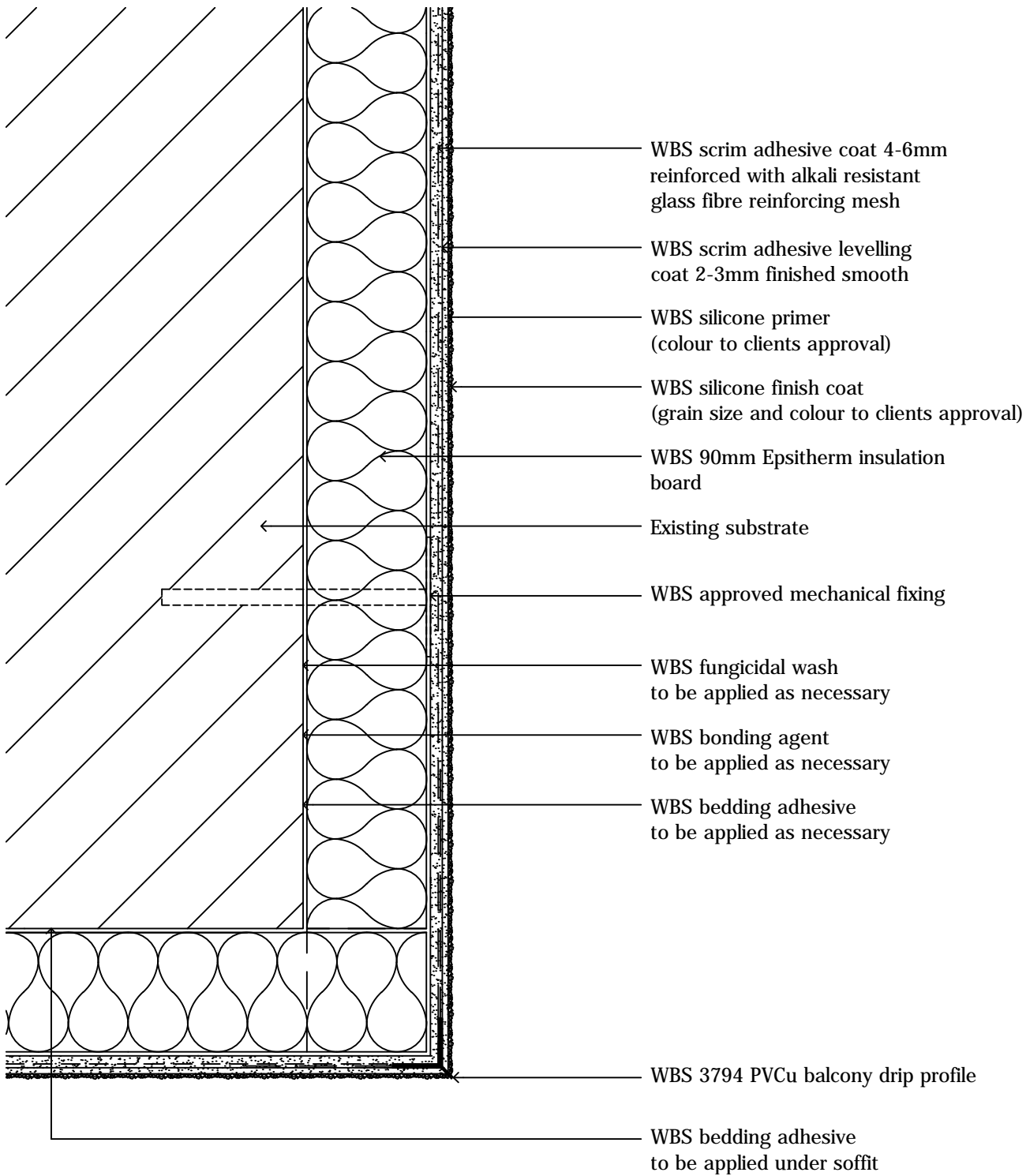
drawing. **Timber parrass detail**

date. February 2013      revision. -      drawn by. RC      scale. nts

drawing no. **MASONRY-EWI-SILICONE-18**      drawing set. 04

**wetherby**  
creating a greener future

1 Kid Glove Road, Golborne Enterprise Park,  
Golborne, Greater Manchester, WA3 3GS  
Tel: 01942 717100 Fax: 01942 717101  
Web: [www.wbs-ltd.co.uk](http://www.wbs-ltd.co.uk)  
E-mail: [technical@wbs-ltd.co.uk](mailto:technical@wbs-ltd.co.uk)



drawing. **Soffit detail**

date. **February 2013**

revision. -

drawn by. **RC**

scale. **nts**

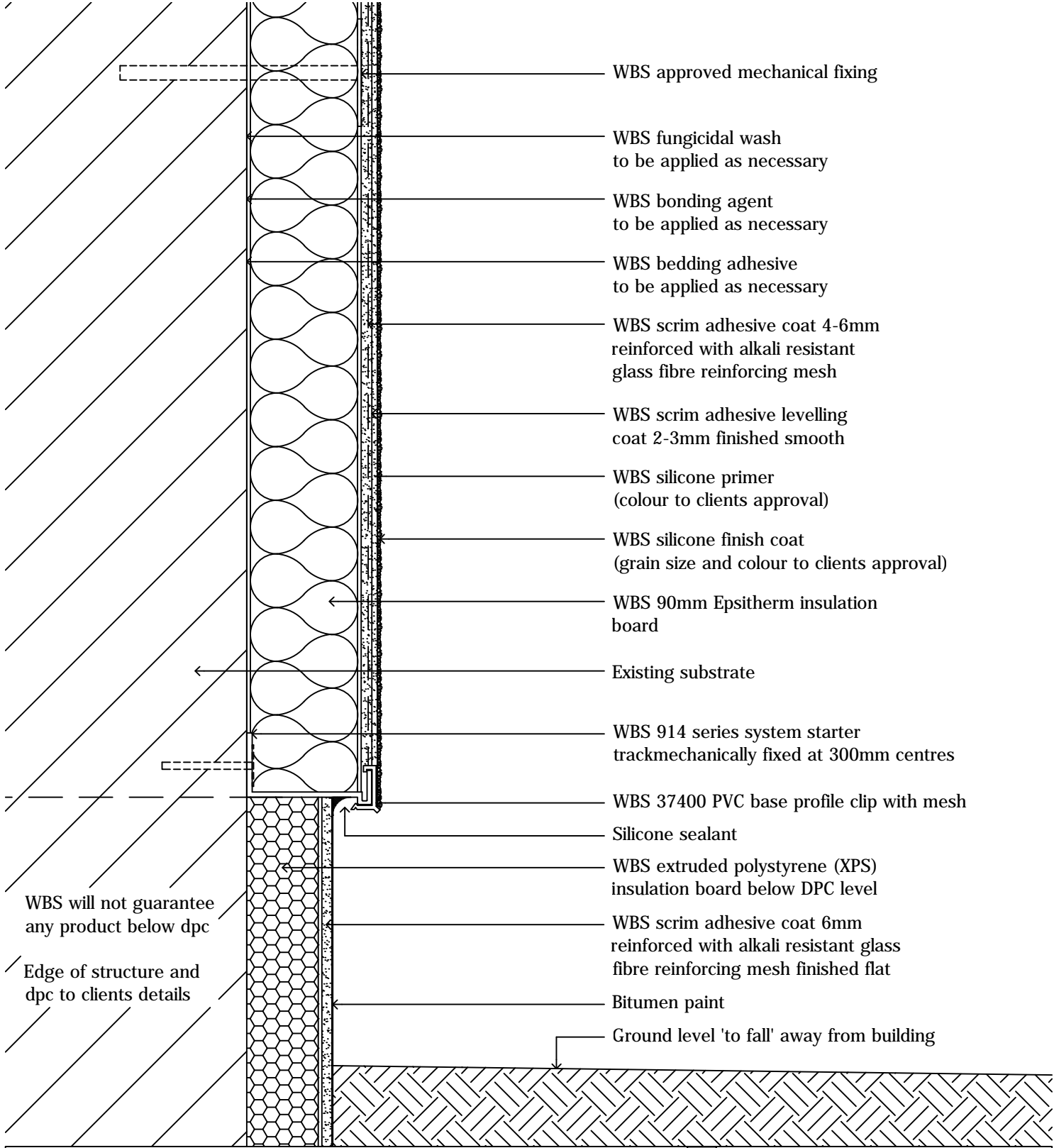
drawing no. **MASONRY-EWI-SILICONE-19**

drawing set. **04**



1 Kid Glove Road, Golborne Enterprise Park,  
 Golborne, Greater Manchester, WA3 3GS  
 Tel: 01942 717100 Fax: 01942 717101  
 Web: [www.wbs-ltd.co.uk](http://www.wbs-ltd.co.uk)  
 E-mail: [technical@wbs-ltd.co.uk](mailto:technical@wbs-ltd.co.uk)





- WBS approved mechanical fixing
- WBS fungicidal wash to be applied as necessary
- WBS bonding agent to be applied as necessary
- WBS bedding adhesive to be applied as necessary
- WBS scrim adhesive coat 4-6mm reinforced with alkali resistant glass fibre reinforcing mesh
- WBS scrim adhesive levelling coat 2-3mm finished smooth
- WBS silicone primer (colour to clients approval)
- WBS silicone finish coat (grain size and colour to clients approval)
- WBS 90mm Epsitherm insulation board
- Existing substrate
- WBS 914 series system starter track mechanically fixed at 300mm centres
- WBS 37400 PVC base profile clip with mesh
- Silicone sealant
- WBS extruded polystyrene (XPS) insulation board below DPC level
- WBS scrim adhesive coat 6mm reinforced with alkali resistant glass fibre reinforcing mesh finished flat
- Bitumen paint
- Ground level 'to fall' away from building

WBS will not guarantee any product below dpc

Edge of structure and dpc to clients details

drawing. **DPC detail**

date. February 2013      revision. -      drawn by. RC      scale. nts

drawing no. **MASONRY-EWI-SILICONE-20**      drawing set. 04



1 Kid Glove Road, Golborne Enterprise Park,  
 Golborne, Greater Manchester, WA3 3GS  
 Tel: 01942 717100 Fax: 01942 717101  
 Web: www.wbs-ltd.co.uk  
 E-mail: technical@wbs-ltd.co.uk