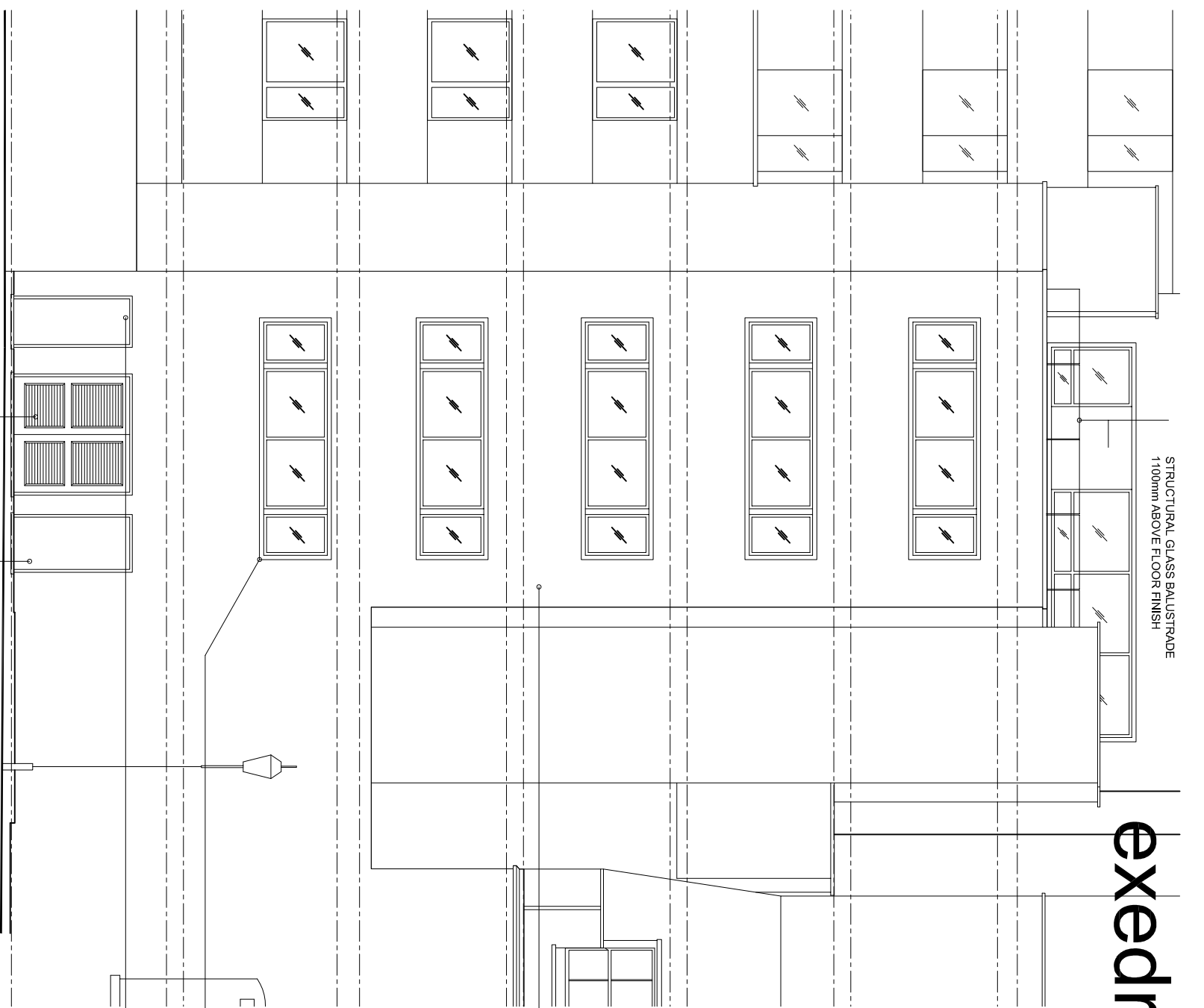


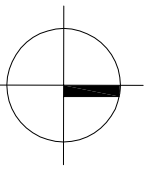
STRUCTURAL GLASS BALUSTRADE  
1100mm ABOVE FLOOR FINISH

# exedra architects



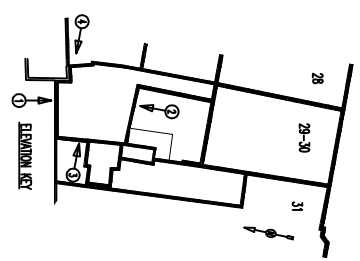
1. PROPOSED FRONT ELEVATION (NORTH)

NEW LOUVERED DOORS TO REFUSE STORE  
NEW TIMBER DOOR TO MATCH EXISTING



canbury park studio 116 canbury park road kingston KT2 6JZ  
te | 0 20 8 546 2 11 5  
www.exedra-architects.co.uk

this drawing is to be read in conjunction with all other consultants drawings and specifications. do not scale drawings, use figure 1 as a reference. drawings are the property of exedra architects limited. this drawing and design remains the copyright of exedra architects limited.



CLEAR GLASS TO SMALL UPPER WINDOW LIGHT.  
OBSCURE GLASS TO LARGE LOWER WINDOW LIGHT (1700mm FROM FFL)

CLEAR GLASS TO SMALL UPPER WINDOW LIGHT.  
OBSCURE GLASS TO LARGE LOWER WINDOW LIGHT (1700mm FROM FFL)

CLEAR GLASS TO SMALL UPPER WINDOW LIGHT.  
OBSCURE GLASS TO LARGE LOWER WINDOW LIGHT (1700mm FROM FFL)

CLEAR GLASS TO SMALL UPPER WINDOW LIGHT.  
OBSCURE GLASS TO LARGE LOWER WINDOW LIGHT (1700mm FROM FFL)

EXTERNAL WALLS TO BE FACING BRICK TO MATCH EXISTING

CLEAR GLASS TO SMALL UPPER WINDOW LIGHT.  
OBSCURE GLASS TO LARGE LOWER WINDOW LIGHT (1700mm FROM FFL)

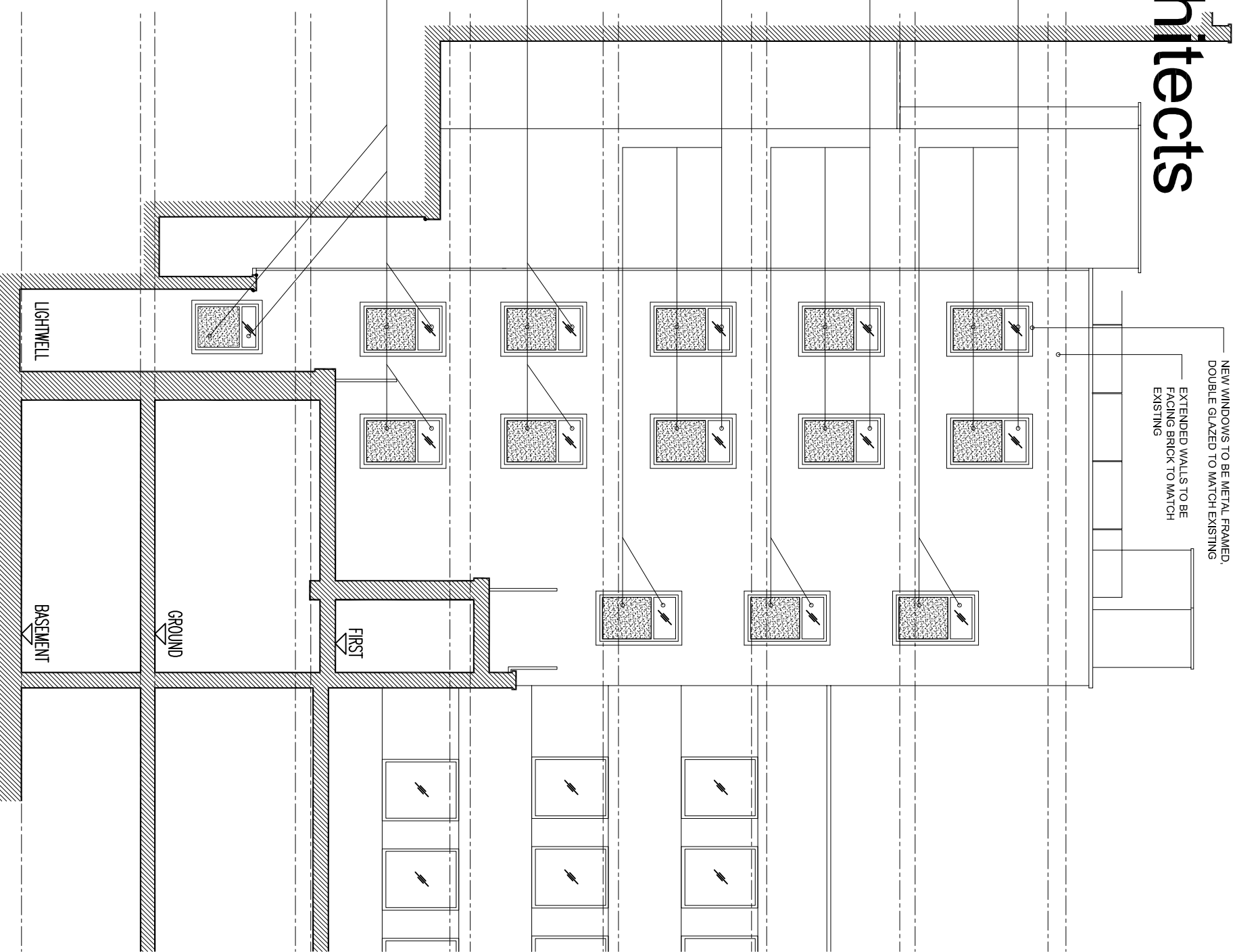
CLEAR GLASS TO SMALL UPPER WINDOW LIGHT.  
OBSCURE GLASS TO LARGE LOWER WINDOW LIGHT (1700mm FROM FFL)

CLEAR GLASS TO SMALL UPPER WINDOW LIGHT.  
OBSCURE GLASS TO LARGE LOWER WINDOW LIGHT (1700mm FROM FFL)

CLEAR GLASS TO SMALL UPPER WINDOW LIGHT.  
OBSCURE GLASS TO LARGE LOWER WINDOW LIGHT (1700mm FROM FFL)

NEW WINDOWS TO BE METAL FRAMED, DOUBLE GLAZED TO MATCH EXISTING

TIMBER DOOR



2. PROPOSED REAR ELEVATION (SOUTH)

NEW WINDOWS TO BE METAL FRAMED, DOUBLE GLAZED TO MATCH EXISTING  
EXTENDED WALLS TO BE FACING BRICK TO MATCH EXISTING

client: WESTCOMBE GROUP  
project: 29-30 HIGH HOLBORN  
drawing title: PROPOSED ELEVATION

project number: 514  
drawing number: PL201

scale: 1:100  
at: A3  
date: OCT 2015  
author: OH  
drawing status: PLANNING