

SPECIFICATION NOTES

- Plant Material and Workmanship to be in accordance with MCA Landscape Specification and the following British Standards.
- BS 8545:2014 Trees: from nursery to independence in the landscape. Recommendations:
 - a) All trees, shrubs and hedge plants supplied shall comply with the requirements of British Standard 3936: Specification for Nursery Stock.
 - b) All pre-planting site preparation, planting and post-planting maintenance works shall be carried out in accordance with the requirements of British Standard 4428(1989) Code of Practice for General Landscape Operations (excluding hard surfacing).
 - c) The use of chemicals (herbicides, insecticides, fungicides and slug pellets etc) is discouraged and all substances used should be biodegradable and non-residual.
 - d) The use of chemical fertilisers is discouraged and preference should be for well-rotted manure to be used instead.
 - e) Soil conditioners, mulches etc. shall be peat free.

Tree Pits
Semi-Mature Trees 20-25cm 200L
 Tree to be underground guyed with a plastic coil watering pipe. 2m x 2m x 600mm deep pit backfilled with topsoil to BS3882 lined on all four sides with a root barrier to a depth of 600mm. Tree in grass areas to have a neatly cut 1m diameter circle of clear soil around the trunk mulched with bark.
 Grass around tree pits to be cut in a neat circle 0.5m in radius from the tree stem and finished with 80mm depth of bark mulch.

12-14cm 45L Heavy Standards
 Grass around tree pits to be cut in a neat circle 0.5m in radius from the tree stem and finished with 80mm depth of bark mulch.
 Pits to be 600mm diameter x 600mm deep. The base of the pit shall be broken up to a depth of 300mm. Toppsoil excavated from the pit shall be set aside for re-use but any sub-soil or debris excavated shall be removed from the site. The pit shall be prevented from freezing in cold weather.

Root Director/Root Barrier
 Each pit to be lined around all sides with Greenleaf Ferroc 600.

Watering Tube
 Each tree to be planted with a 60mm diameter x 3m flexible perforated watering pipe wrapped around the root-ball at 1/3 of the pit depth with the pipe end supported above ground with a short stake and bar.

Planting
 The tree shall be planted at the correct nursery depth backfilling the pit with topsoil and firming down in 150mm layers as filling proceeds and finally heeling in firmly around root collar. The roots of bare-root trees are to be soaked in water for at least one hour prior to planting.

Backfilling Material
 Backfilling material to be topsoil to BS3882 which 170g of bonemeal and 9L of Tree and Shrub Planting Compost has been incorporated per m³.

Staking
 Trees to be double-staked with two pointed untreated 75-100mm diameter softwood 1.8m long timber stakes driven-in to 1/3 length and a 100x25mm softwood timber cross bar with proprietary recycled PVC buckle strap and spacer fixed with large hand galvanised nails. Stakes to be driven vertically into pit base either side of root-ball leaving approx. 1200mm of the stake above ground level after backfilling.

Grass
 Roll-in 'Medallion' or equivalent quality turf, consistent, clean and free from perennial weeds.

Mulch
 All planted areas to mulched with 50mm consolidated depth of Ornamental Grade Natural Pine Bark.

MANAGEMENT OF WILDFLOWER AREAS
 New meadows: To encourage perennial flowers and grasses to make good root development, mow the meadow in the first year after sowing. Cut to a height of 50mm (2in) four times during the year.

Established spring-flowering meadows: Cut in July and for the remainder of the summer to reduce the vigour of coarse grasses and to encourage flowers such as Cowslips, Lady's smock, Selfheal and Bugle to prosper. Leave un-mown from February to July.

Established summer-flowering meadows: mow in late August or September, after wildflowers such as Knapweed, Devil's Bit Scabious and Lady's Bedstraw have set seed. Use this summer-flowering meadow regime for meadows with plants flowering at various times, including spring and summer species.

For meadows at all stages:
 Leave the initial mowings in situ for a few days to allow seed to drop to the ground but then collect mowings to reduce soil fertility. Aim for the first cut to be 5-7.5cm (2-3in) high. Subsequent cuts can be lower.

SEED MIX FOR WILDFLOWER AREAS
REB Farmland Mixture (MG6 Grassland) supplied by Germinal Seeds Amenity

- Mixture Breakdown
- Cynosurus cristatus Crested Dogtail 25%
 - Festuca rubra ssp. litoralis Slender Creeping Red F 25%
 - Poa trivialis Rough Stalked Meadow Grass 12.5%
 - Trisetum flavescens Golden Oat-Grass 5.5%
 - Holcus lanatus Yorkshire Red Fescue 5%
 - Plantago lanceolata Ribwort Plantain 3%
 - Agrostis capillaris Browntop Bent 2.5%
 - Poa pratensis Smooth Stalked Meadow Grass 2.5%
 - Anthoxanthum odoratum Sweet Vernal 2%
 - Medicago lupulina Black Medick 2%
 - Ranunculus acris Meadow Buttercup 2%
 - Trifolium pratense Red Clover 2%
 - Trifolium repens White Clover 2%
 - Centaurea ngra Common Knapsweed 1.5%
 - Rhinanthus minor Yellow Rattle 1.25%
 - Achillea millefolium Yarrow 1%
 - Isis pseudocaulis Yellow Flag Iris 1%
 - Prunella vulgaris Self-Heal 1%
 - Rumex acetosa Common Sorrel 1%
 - Taraxacum officinale Dandelion 1%
 - Lathyrus pratensis Meadow Vetching 0.5%
 - Leontodon autumnale Autumn Hawkbit 0.5%
 - Cerastium fontanum Common Mouse-ear 0.25%
 - Sowing rate: 5.0 gm/m²

SEED MIX FOR MOWN GRASS AREAS
WFG20 Species Rich Lawn

- Mixture Breakdown
- Festuca rubra ssp. litoralis Slender Creeping Red Fescue 15%
 - Festuca ovina Sheeps Fescue 10%
 - Agrostis capillaris Browntop Bent 5%
 - Poa trivialis Rough Stalked Meadow Grass 5%
 - Agrostis stolonifera Creeping Bent 2.5%
 - Lolium perenne 2.5%
 - Pleium bertolonii Teno 2.5%
 - Centaurea ngra Common Knapsweed 2%
 - Ranunculus acris Meadow Buttercup 2%
 - Trifolium pratense Red Clover 2%
 - Trifolium repens White Clover 2%
 - Ranunculus repens Creeping Buttercup 1.3%
 - Galium verum Lady's Bedstraw 1%
 - Linum usitatissimum Flax 1%
 - Lolium columbianum Small scabious 1%
 - Medicago lupulina Black Medick 1%
 - Plantago lanceolata Ribwort Plantain 1%
 - Plantago media Hoary Plantain 1%
 - Achillea millefolium Yarrow 0.5%
 - Leontodon autumnalis Autumn Hawkbit 0.5%
 - Leontodon hispidus Rough Hawkbit 0.5%
 - Prunella vulgaris Self Heel 0.5%
 - Rumex acetosa Common Sorrel 0.5%
 - Teucrium scorodonia Wood Sage 0.5%
 - Taraxacum officinale Dandelion 0.45%
 - Daucus carota Wild Carrot 0.25%
 - Cerastium fontanum Common Mouse-ear 0.2%
 - Hypochaeris radicata Cats-Ear 0.2%
 - Primula veris Cowslip 0.2%
 - Rhinanthus minor Yellow Rattle 0.2%
 - Scabiosa columbiana Small scabious 0.2%
 - Sowing rate: 10.00 gm/m²
 - Cutting height no lower than 50mm

HARD LANDSCAPE DETAILS & LEVELS

Refer to FNH 28 Series External Finishes Details plan.

REVISIONS

- Rev A: 02/07/15 Roof terrace planting boxes added. Tree added to Lawn Road 4m².
- Rev B: 10/07/15 Roof terrace details amended.
- Rev C: 20/07/15 Roof details amended.
- Rev D: 24/07/15 Specification notes amended.

CONDOC

- Rev 0: 07/08/2015 Issued for Construction
- Rev 1: 09/10/2015 Semi-Mature tree group re-spaced.
- Rev 2: 12/10/2015 Semi-Mature tree group re-spaced.

MCA
 Landscape Architects

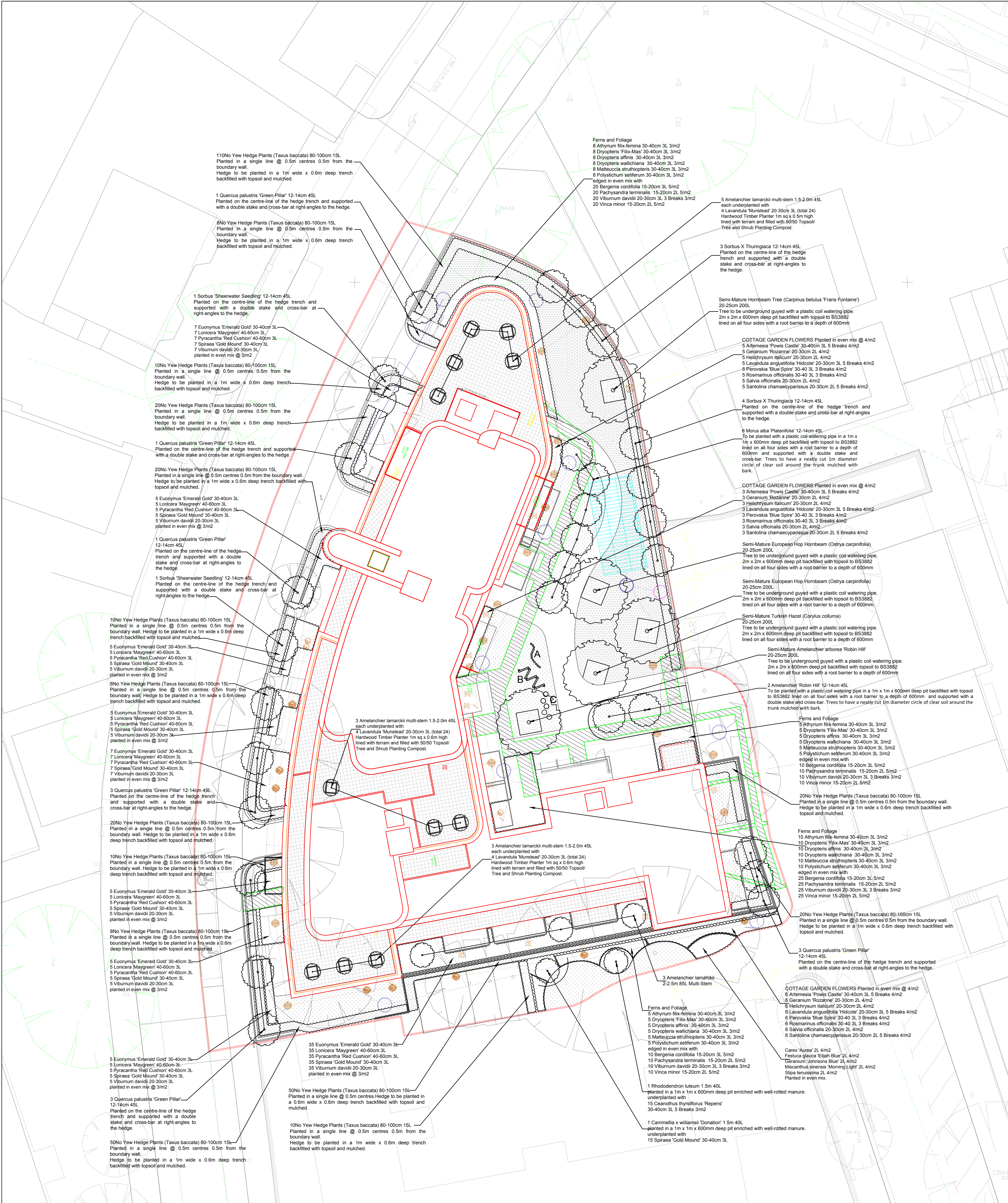
www.mcalandscape.co.uk
 Tel: (01993) 811888 Mob: 07831 248130

Fairview
 Estates (Housing) Ltd
 LAWN ROAD
 CAMDEN

LANDSCAPE DETAILS
PLANTING PLAN &
DOORSTEP PLAY

1:200/A1 22/06/15 MCA

FNH413/04 Rev 2



LANDSCAPE DETAILS PLAN 1:200/A1

LEGEND

- Proposed Semi-Mature Tree**
 20-25cm 200L
 Tree to be underground guyed with a plastic coil watering pipe. 2m x 2m x 600mm deep pit backfilled with topsoil to BS3882 lined on all four sides with a root barrier to a depth of 600mm. Tree in grass areas to have a neatly cut 1m diameter circle of clear soil around the trunk mulched with bark.
- Proposed Heavy Standard Tree**
 12-14cm 45L
 Planted in a 1m x 1m x 600mm deep pit backfilled with topsoil to BS3882 lined on all four sides with a root barrier to a depth of 600mm supported with a double stake and cross-bar. Tree in grass areas to have a neatly cut 1m diameter circle of clear soil around the trunk mulched with bark.
- Tree to be retained**
- Tree to be removed**
- Proposed Hedge**
- Proposed Shrubs**
- Proposed Turf**
 Rollawn Medallion mown turf with bulbs planted in drifts:
 Wild Daffodil Bluebell
 Snowdrop Crocus Winter Aconite
- Proposed Species Rich Turf**
 Mown to a minimum height of 50mm.
- Wildflower Grass**
 Allowed to grow long and set seed.
- Doorstep Play Space**
 A - Log Wall B - Zig Zag Log Walk
 C - Stepping Logs

