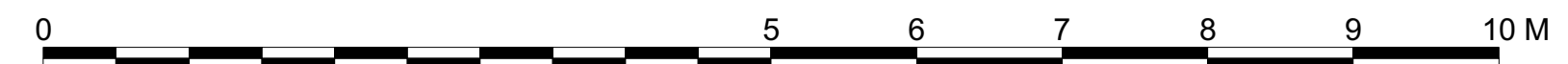




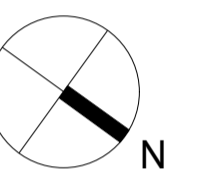
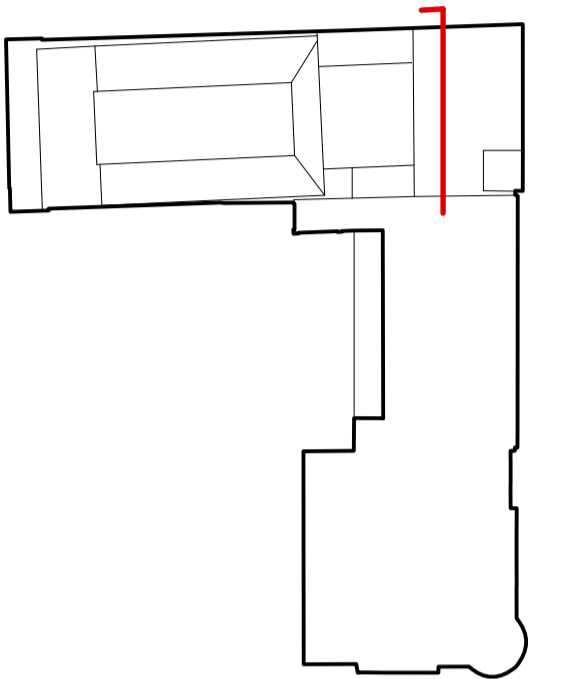
16 CHENIES STREET

22.00m ABOVE ORDNANCE DATUM



GENERAL NOTES

1. This drawing is the copyright of Haines Phillips Architects.
2. Do not scale from this drawing. Use figured dimensions only.
3. This drawing must not be used for land transfer purposes, or for construction purposes unless accompanied by an Architect's Instruction.



DRAWING ISSUE STATUS

ISSUE	STATUS	COMMENT
SK	SKETCH	
P	PRELIMINARY	
PL	PLANNING	For comment and review Planning/ Listed Building Application
T	TENDER	For pricing purposes only
C	CONSTRUCTION	For procurement & construction Record drawings on completion
AB	AS-BUILT	Record drawings on completion
L	LEGAL	Conveyancing or other legal purposes

REVISIONS

REV	DATE	NOTES
1	08/15	First Issue
2	30/9/15	General Revisions

HAINES PHILLIPS
ARCHITECTS

Tankerton Works
12 Argyle Walk
London WC1H 8HA
020 7833 9324
020 7837 2864
office@hainesphillips.co.uk

JOB TITLE
The Richard Attenborough Theatre and Associated Development for RADA
16-18 Chenies Street WC1
DRAWING TITLE
Demolition
Section D-D (b)

DRAWN DATE
SM 09/2015
SCALE
1:50 @ A1, 1:100 @ A3
JOB NR DRAWING NR ISSUE REV
3769 DM 024 PL 2