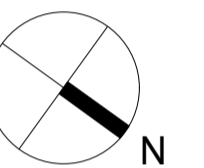
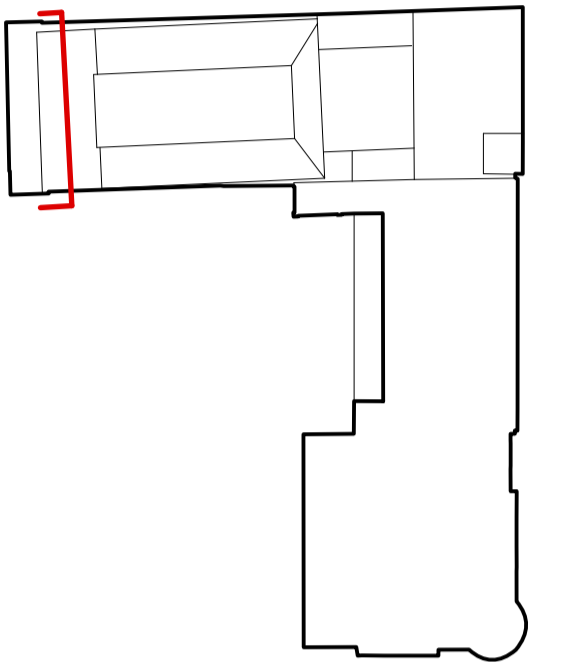


GENERAL NOTES

1. This drawing is the copyright of Haines Phillips Architects.
2. Do not scale from this drawing. Use figured dimensions only.
3. This drawing must not be used for land transfer purposes, or for construction purposes unless accompanied by an Architect's Instruction.



DRAWING ISSUE STATUS

ISSUE	STATUS	COMMENT
SK	SKETCH	
P	PRELIMINARY	
PL	PLANNING	For comment and review Planning/ Listed Building Application
T	TENDER	For pricing purposes only
C	CONSTRUCTION	For procurement & construction Record drawings on completion
AB	AS-BUILT	Record drawings on completion
L	LEGAL	Conveyancing or other legal purposes

REVISIONS

REV	DATE	NOTES
1	08/15	First Issue
2	30/9/15	General Revisions

**HAINES PHILLIPS**  
ARCHITECTS

Tankerton Works  
12 Argyle Walk  
London WC1H 8HA  
020 7833 9324  
020 7837 2864  
office@hainesphillips.co.uk

JOB TITLE  
**The Richard Attenborough Theatre and Associated Development for RADA**  
16-18 Chenies Street WC1

DRAWING TITLE  
**Demolition Section A-A**

DRAWN DATE  
SM 09/2015

SCALE  
1:50 @ A1, 1:100 @ A3

JOB NR DRAWING NR ISSUE REV  
**3769 DM 020 PL 2**

