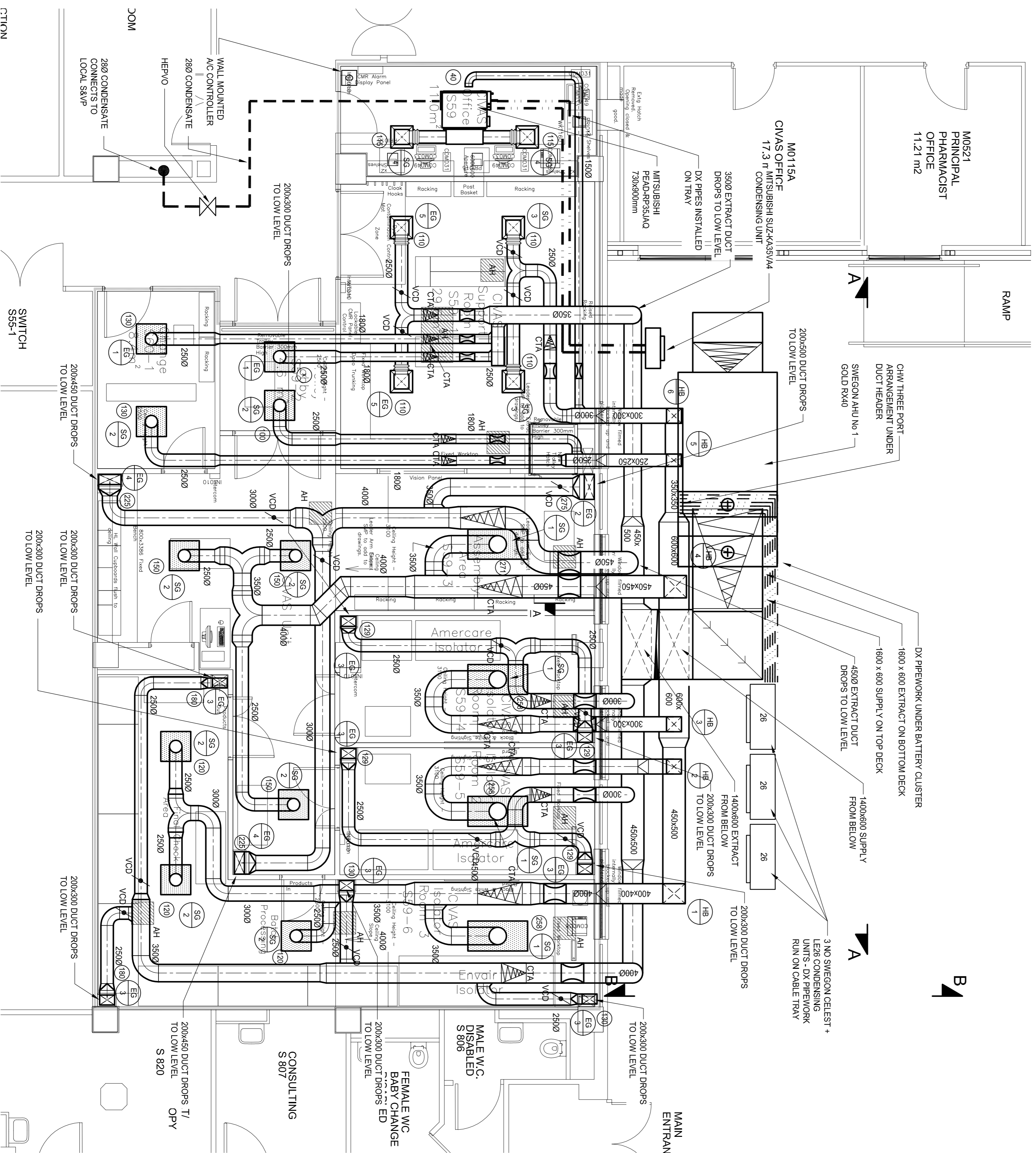


REF No.	MAKE	MODEL	SIZE	FILTER	COMMENTS
SG1	TRGX	FB31	1 (800 x 1200)	H14	GW FILTER, DIFFERENTIAL MEASURING POINTS, SEALING INTEGRITY TEST FACILITY AND DOP PORTS
SG2	TRGX	FB31	2 (800 x 800)	H14	GW FILTER, DIFFERENTIAL MEASURING POINTS, SEALING INTEGRITY TEST FACILITY AND DOP PORTS
SG3	GILBERTS	DG4D	300x300	N/A	GW MANUFACTURERS SIDE ENTRY FLEUMS
SG4	GILBERTS	DG4D	225x225	N/A	GW MANUFACTURERS SIDE ENTRY FLEUMS
EG1	TRGX	FB31	1 (600 x 600)	NO FILTER	NO FILTER TEST REQUIRED
EG2	GILBERTS	GECA RC	350x450		SEE DETAIL 1
EG3	GILBERTS	GECA RC	250x350		SEE DETAIL 1
EG4	GILBERTS	GECA RC	300x400		SEE DETAIL 1
EG5	GILBERTS	DG4D	300x300		GW MANUFACTURERS SIDE ENTRY FLEUMS

REF No.	AREA	DUTY REHEAT	KW	AR VOLUME m ³ s	DUCT SIZE	BATTERY SIZE	SUPPLYING
AHU	CVAS	22 OFF-AHU	33 kW	27	1400x600	1400x600	SWEGON
HB1	ISOLATOR 3		4.8 kW	0.618	400x400	400x400	SPC
HB2	ISOLATOR 2		1.9 kW	0.258	300x300	300x300	SPC
HB3	ISOLATOR 1		1.9 kW	0.258	300x300	300x300	SPC
HB4	ASSEMBLY		5.4 kW	0.721	450x450	490x400	SPC
HB5	CHANGE LOBBY		1.42 kW	0.230	250x250	300x300	SPC
HB6	SUPPORT		3.3 kW	0.220	300x300	300x300	SPC

SCHEDULE OF GRILLE TYPES

SCHEDULE OF HEATER BATTERIES



Notes

- THE DAMPERS SHALL BE INSTALLED WITH THE REQUIRED STRAIGHT DUCT LENGTHS BETWEEN THE EXTRACT GRILLE, THE DAMPER AND THE INLET SIDE OF THE SUPPLY GRILLE, IN ACCORDANCE WITH THE MANUFACTURERS RECOMMENDATIONS

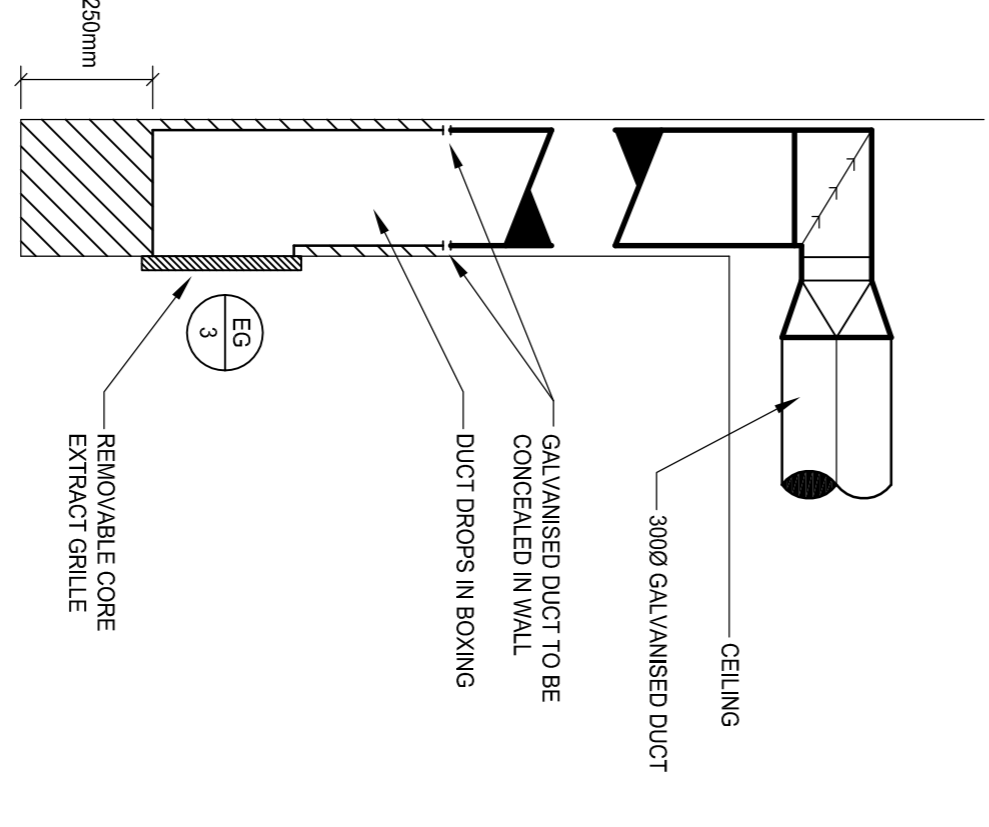
Legend

- SG SUPPLY GRILLE AND REFERENCE
- EG EXTRACT GRILLE AND REFERENCE
- EG FLOW RATE REFERENCE
- X ACCESS HATCH
- Volume Control Damper
- Cross Talk Attenuator
- CTA

HEPA TERMINAL

DOP FILTER TEST PORT

NOTE: FLEUMS TO BE SEALED TO CEILING



Notes

THE CONTRACTOR SHALL NOTE THESE DRAWINGS ARE DESIGN DRAWINGS. THE CONTRACTOR SHALL VERIFY ALL DIMENSIONS AND SPECIFICATIONS IN COOPERATION WITH ALL ARCHITECTS, STRUCTURAL & SERVICES DRAWINGS AND SPECIFICATIONS. THE CONTRACTORS WORKING DRAWINGS SHALL BE USED AS THE BASE DRAWINGS FOR THE INSTALLATION. THESE DRAWINGS SHALL BE SUBMITTED TO THE ENGINEER & ARCHITECT FOR THEIR COMMENTS/APPROVAL PRIOR TO INSTALLATION.

FAILURE TO ADHERE TO THE ABOVE MAY RESULT IN THE CONTRACTOR HAVING TO REMOVE AND REINSTALL THE EQUIPMENT AT THEIR OWN COST.

revision date designed drawn checked signed

A 14.08.15 SPS LV SLS

B 01.10.15 SPS MSA SLS

A TENDER ISSUE

B REVISED TENDER ISSUE

The drawings are copyright © Stuart McCurry & Partners Limited. No part of this drawing may be reproduced without the written permission of Stuart McCurry & Partners Limited. Verify all dimensions & structural details on site. If in doubt, ask before acting. Read the drawings in conjunction with the appropriate Specifications. The purpose of this drawing, when issued as a Tender Drawing, is to enable contractors to interpret correctly the design and to submit competitive tenders for the works. It is not intended to be used as a construction drawing and is not to be used as a basis for any other drawings, unless otherwise stated under the terms contained in the conditions of Tender.

Stuart McCurry & Partners Limited
SMP House
South Street
Wandsworth, Aylesbury,
Buckinghamshire HP22 8EF
Email: engineers@stuart-mccurry-partners.co.uk
Web: www.stuart-mccurry-partners.co.uk
Tel: 01296 850789 Fax: 01296 852647

SM&P
Consulting Engineers - Building Services

job title: ROYAL FREE HOSPITAL MANUFACTURING PHARMACY

drawing title: Mechanical Services CVAS UNIT VENTILATION LAYOUT

job no.: 15029 scale: 1:50@A1 drawing no.: M30 edition: B

status: TENDER