

New gate proposal

To be made in the style of existing gate

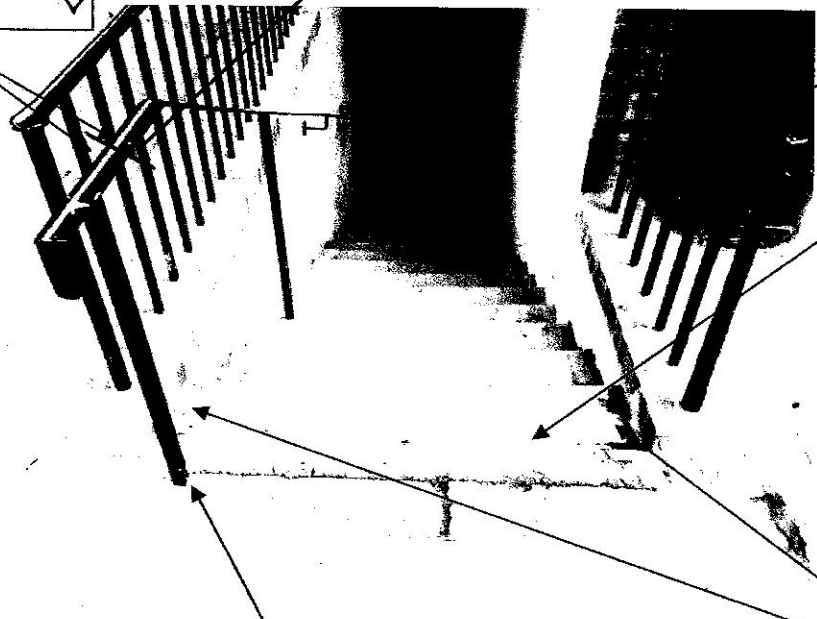


Please below guide to position of gate

Gate to attach to existing rail with metal strut ✓

HANDRAIL TO BE CUT AND WELDED TO NEW GATE POST

Gate to attach to existing rail with metal strut ✓



Gate will need to open outwards and have gap at base to swing out over top step ✓

Railings to be removed and moved back. ✓

New gate to be positioned on this sep in line with existing railings. Can it be fitted in railings? ✓