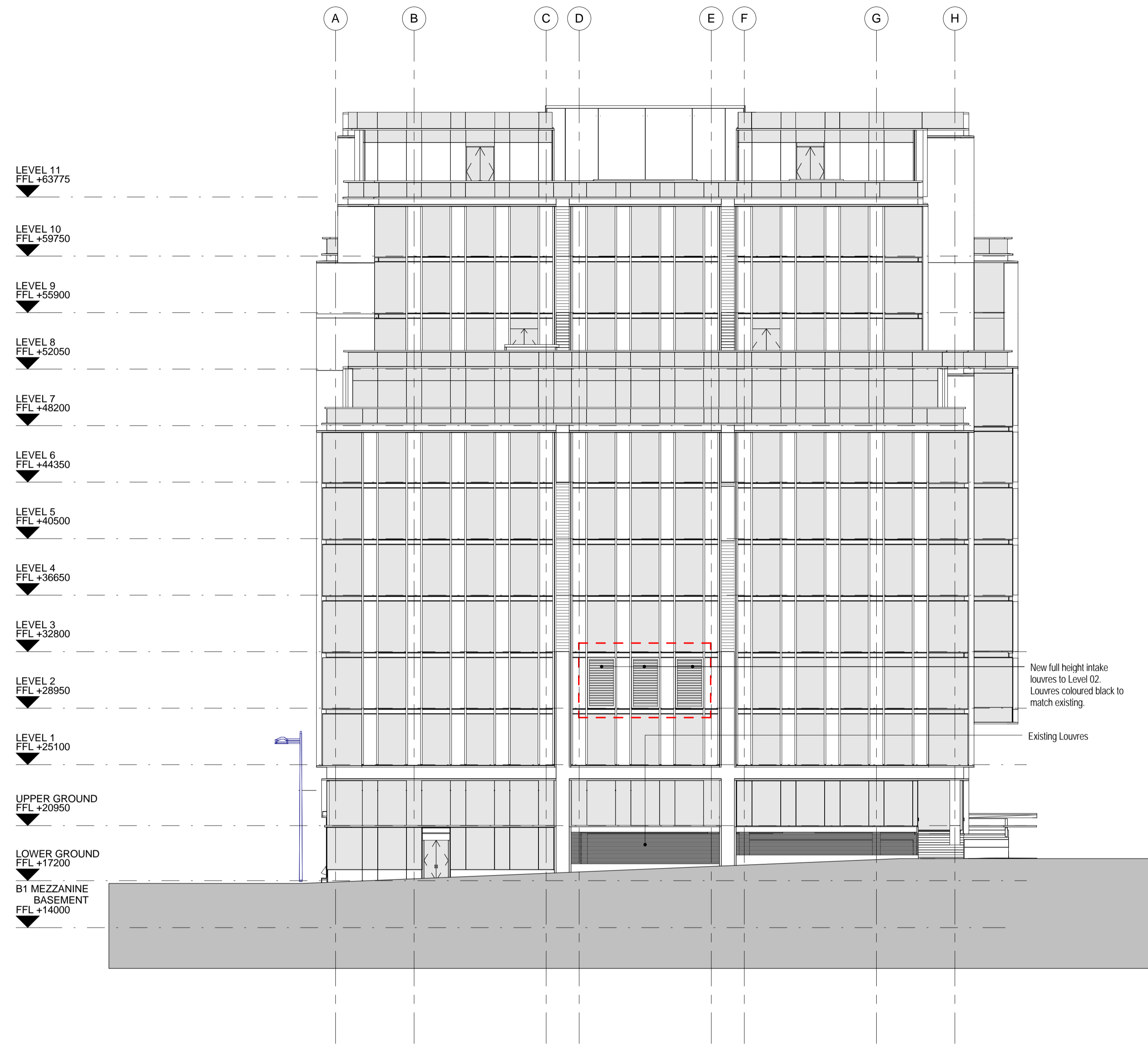
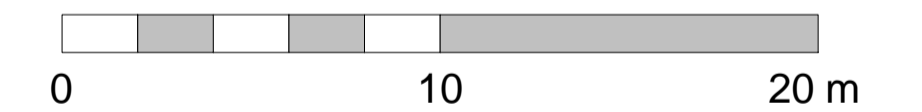


1 Existing South Elevation, 1:200 @A1



2 Proposed South Elevation, 1:200 @A1



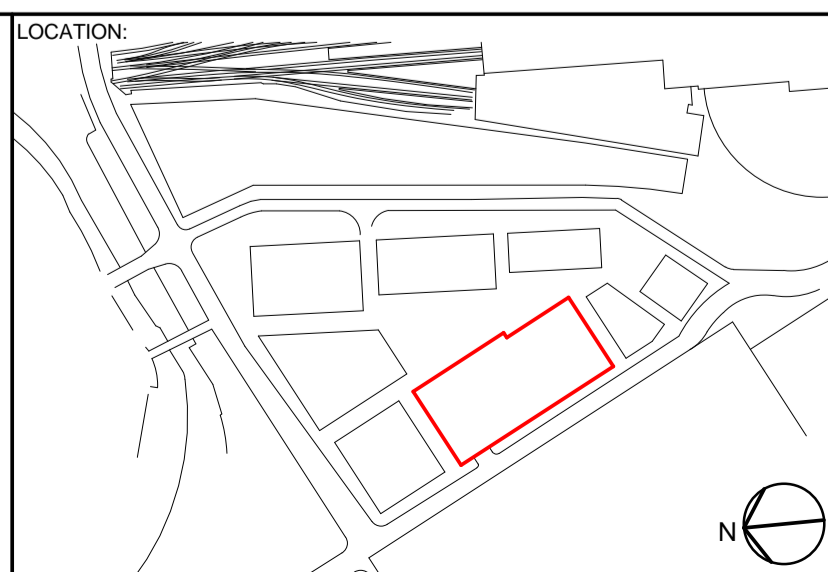
KEY	REV	DATE	DESCRIPTION

NOTE

CONSULTANTS
CLIENT: Google UK
STRUCTURAL ENGINEER: Waterman's
MECHANICAL ENGINEER: Cundall
COST CONSULTANT: CBRE
PROJECT MANAGER: CBRE
ACOUSTIC CONSULTANT: Sandy Brown Associates
CATERING CONSULTANT: Humble Arnold Associates

NOTE
1. Do not scale from this drawing.
2. All dimensions to be checked on site by the contractor and such dimensions to be his responsibility.
3. Report all drawing errors, omissions and discrepancies to the architect.
4. This document may be issued in an uncontrolled CAD format to enable others to use it as background information to make alterations and/or additions. In that instance the file will be accompanied by a PDF version. It is for those making such alterations and additions to ensure that they make use of current background information. AHMM Ltd accepts no liability for any such alterations or additions to the background information or arising out of changes to background information which occur prior to alterations of additions being made.

LOCATION:



ALFORD HALL MONAGHAN MORRIS
 ARCHITECTS Ltd
 MORELANDS, 5-23 OLD STREET LONDON EC1V 9HL
 TEL 020 7251 5261 FAX 020 7251 5123 WEB WWW.AHMM.CO.UK

job title
Google Pancras Square
 drawing title / location
South Elevation Additional Louvre Locations

drawn by JL	checked PS	scale 1 : 200 @ A1	status Planning Issue
project 14207	drawing no. (PL) 205	revision A	