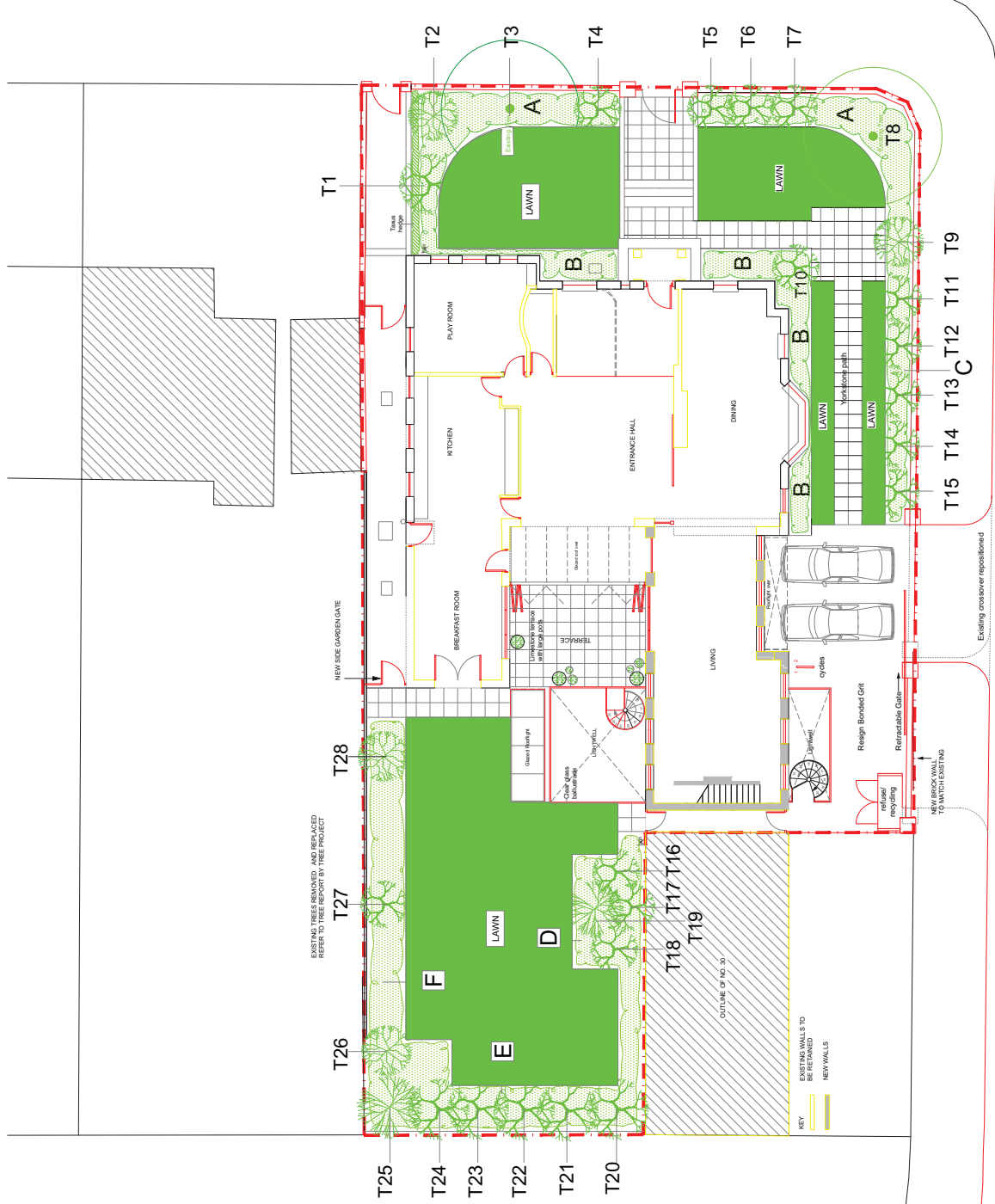


KEY

TREES

- T1 Prunus subhirtella 'Autumnalis Rosea'
- T2 Gleditsia tr. 'Sunburst'
- T3 existing Prunus 'Pissardii'
- T4 Cydonia oblonga
- T5 Amelanchier lamarkii
- T6 Sorbus aria 'Lutescens'
- T7 Crataegus oxyacantha
- T8 existing Robinia pseudoacacia 'Frisia'
- T9 Acer pensylvanicum
- T10 Arbutus unedo (specimen)
- T11 - T15 Betula utilis (multi-stemmed)
- T16 - T18 Sorbus aucuparia
- T19 Pinus nigra (multi-stemmed)
- T20 - T24 Quercus ilex
- T25 Pinus sylvestris
- T26 Acer palmatum 'Senkaki'
- T27 Malus x robusta
- T28 Cercis siliquastrum

Beds A - F - Refer to planting schedule



48 Queens Grove, London, NW8



Outside Rooms Ltd
55 Hazzehville Road
Hornsey Rise
London, N19 5ND
0207 261 2468

| | | | |
|----------|------------------------------|----------|------------------------------------|
| client | Citi Bank International | | |
| project | 48 Queens Grove, London, NW8 | | |
| drawing | Landscape Plan | | |
| date | 16th Sept 2011 | scale | 1:100 @ A1 |
| file no. | CG001 | drawn by | F S Landscape & Garden Design - FW |

do not scale - check all dimensions on site