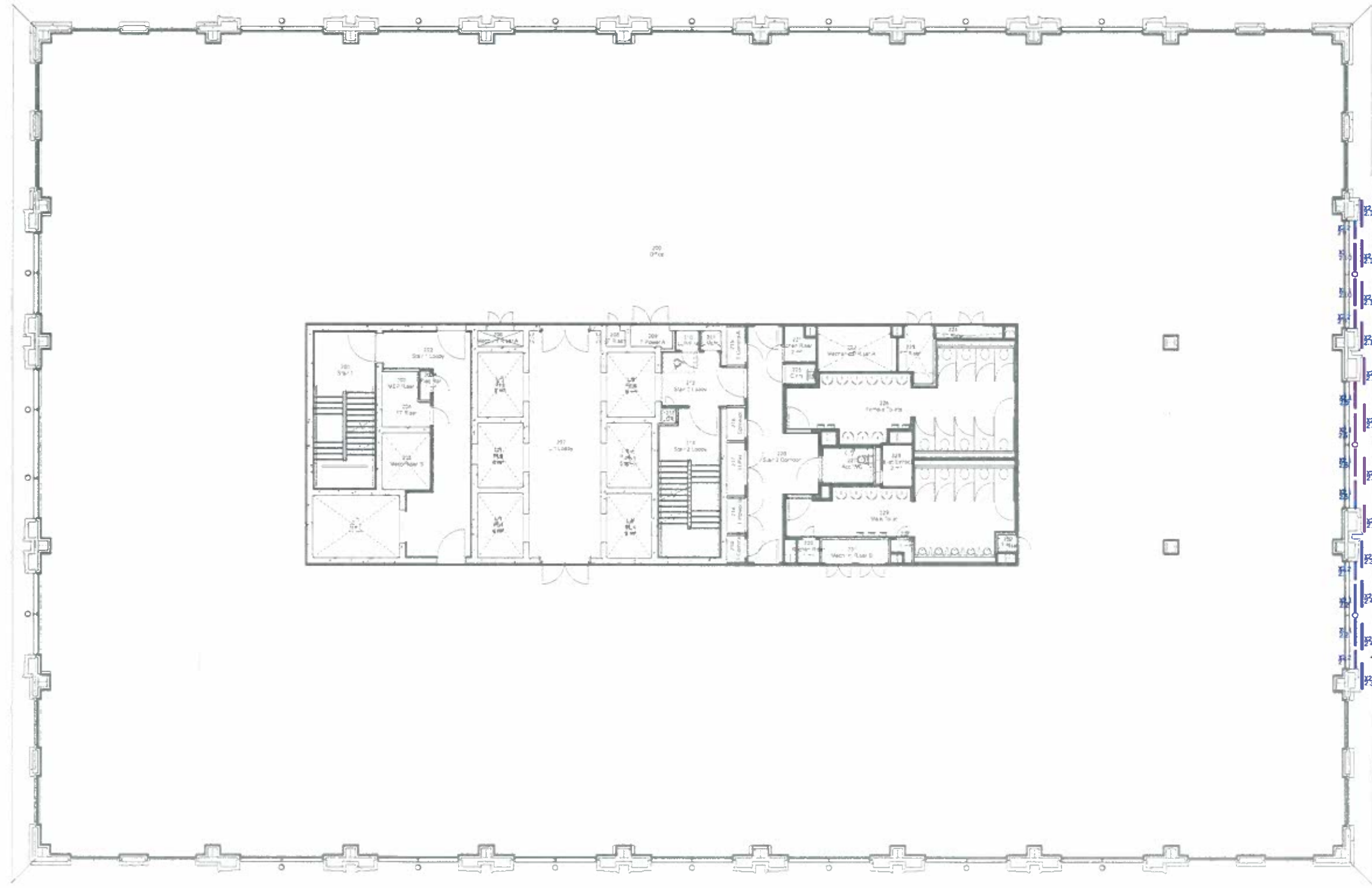


Electrolight
 london@electrolight.com
 www.electrolight.com
 13 Christopher Street
 London
 EC2A 2BS

NOTES
 1. All dimensions shown are approximate and based on the information provided. Dimensions to be based on the actual site and not on this drawing.
 2. During the design process, it is possible that the design will be amended. The design is not based on the electrical design and should be confirmed with the electrical design team.
 3. The design is based on the information provided and is not a guarantee of performance. The design is based on the information provided and is not a guarantee of performance.
 4. The design is based on the information provided and is not a guarantee of performance. The design is based on the information provided and is not a guarantee of performance.
 5. The design is based on the information provided and is not a guarantee of performance. The design is based on the information provided and is not a guarantee of performance.



Twin row of narrow beam linear LED up light. Surface mounted. Exact setting out to be confirmed on site at focusing.

CK/EL/02 D

REV	DATE	ISSUE	DESN
D	17.02.15	Update To Final Design	CK
C	12.12.14	Value Engineering Update	CK
B	03.08.14	Update to revised architecture	CK
A	16.05.14	Update to revised architecture	CK
CLIENT			
Argent LLP			
ARCHITECT			
Porphyros Associates			
PROJECT TITLE			
3 Pancras Square, King's Cross, London, UK			
DRAWING TITLE			
2nd Floor Exterior Lighting Plan			
REVISION	DATE		
D	28.04.2016		
JOB No	DRAWING No		
0059	EL_0059_100		
SCALE @A1	DATE		
1:100@A1	C Knowlton		
DRAWING			

Electrolight
 london@electrolight.com
 www.electrolight.com

13 Christopher Street
 London
 EC2A 2BS



NOTES
 1. All lighting symbols shown are for information only. Construction to be based on the architect's and manufacturer's details.
 2. Control gear should be provided for all lighting symbols shown. Control gear to be based on the manufacturer's details.
 3. All lighting symbols shown are for information only. Construction to be based on the architect's and manufacturer's details.
 4. All lighting symbols shown are for information only. Construction to be based on the architect's and manufacturer's details.
 5. All lighting symbols shown are for information only. Construction to be based on the architect's and manufacturer's details.

Legend:
 [Symbol] Luminaire Symbol
 X1 Luminaire Reference
 1.1 Control Group Reference



X3.1 - Floor recessed linear up lights integrated into terrace flooring.

X5.1 - Exterior rated medium beam adjustable projector to wash light up columns. Protective housing to be developed with architect.

Small narrow beam spot light integrated into facade. To architect's detail.

EXTERNAL TERRACE AREA

REV	DATE	ISSUE	CHK	DRW
D	17.02.15	Update to Final Design	CK	
C	12.12.14	Value Engineering Update	CK	
B	03.08.14	Update to revised architecture	CK	
A	16.05.14	Update to revised architecture	CK	

CLIENT
 Argent LLP

ARCHITECT
 Porphyrios Associates

PROJECT TITLE
 3 Pancras Square, King's Cross, London, UK

DRAWING TITLE
 7th Floor Exterior Lighting Plan

REVISION	DATE	DRAWING NO.	SCALE
D	28.04.2014	EL_003B_100	1:100@A1
003B			

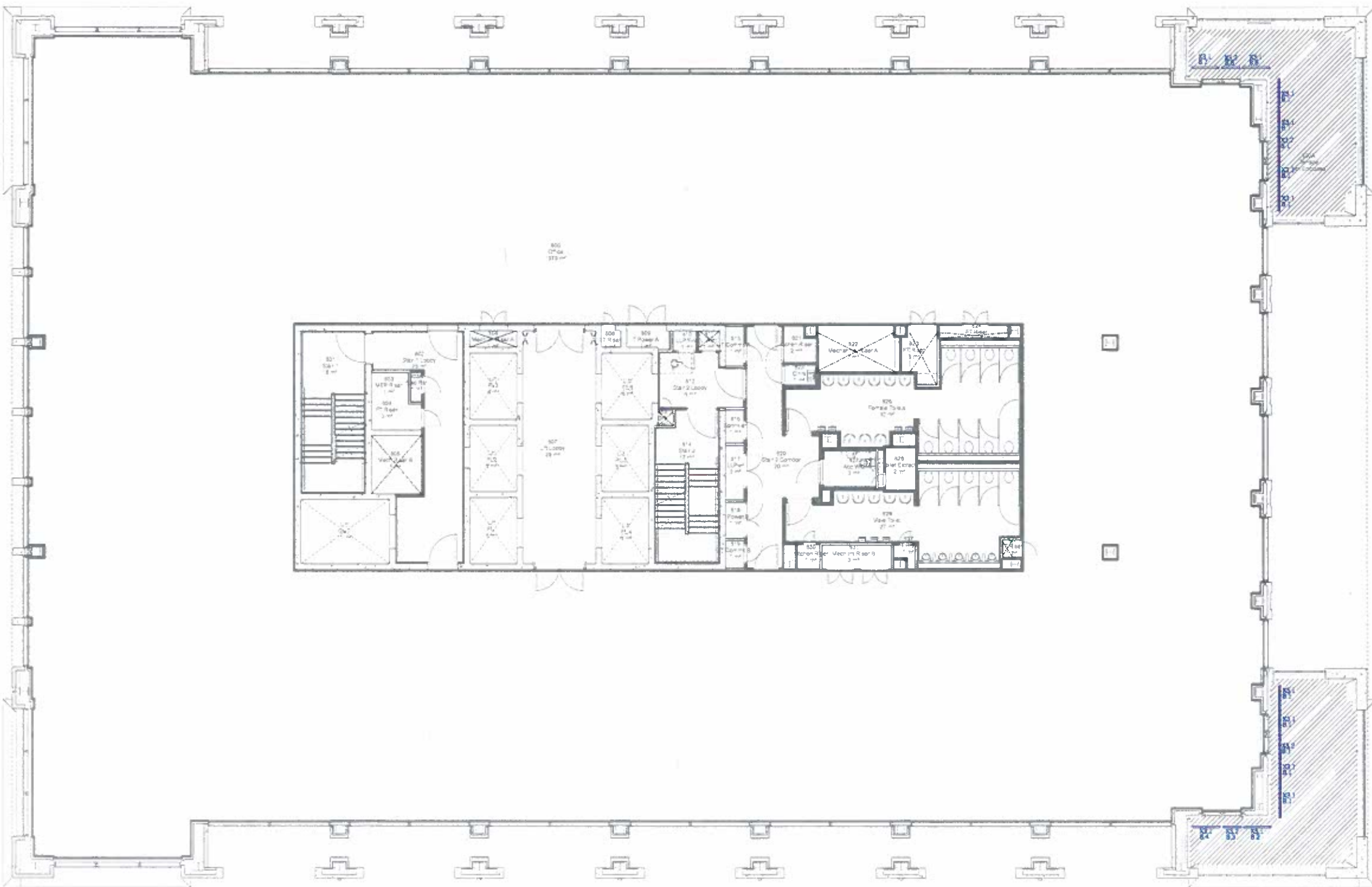
DESIGNED BY: C Knowlton
 DRAWN BY: C Knowlton

CK/EL/03D

Electrolight
 london@electrolight.com
 www.electrolight.com
 13 Christopher Street
 London
 EC2A 2BS

NOTES
 Lights are shown from possible locations of luminaires only. Contractor to be selected by client and lighting layout to be agreed with client.
 Control references indicate groups to which luminaires are to be connected in operation. These groups are not based on the electrical design and should be confirmed by the contractor. For control group details, refer to the Electrical Schedule and the luminaire specification as set out in the Electrical Schedule of Drawings.
 These drawings show design intent only and are not for construction. Design is subject to change during construction.
 Check with client on any omissions.

-  Luminaire Symbol
-  Luminaire Reference
-  Control Group Reference



 EXTERNAL TERRACE AREA

CK/EL/04D

D	17.02.15	Update To Final Design	CK
C	12.12.14	Value Engineering Update	CK
B	03.08.14	Update to revised architecture	CK
A	18.05.14	Update to revised architecture	CK
REV	DATE	ISSUE	CHK
CLIENT			
Argent LLP			
ARCHITECT			
Porphyrios Associates			
PROJECT TITLE			
3 Pancras Square, King's Cross, London, UK			
DRAWING TITLE			
8th Floor Exterior Lighting Plan			
REVISION	DATE		
D	28.04.2014		
JOB No	DRAWING No		
0059	EL_0059_100		
SCALE @A1	DRAWN		
1:100@A1	C Knowlton		
SCOPED/REVISED			

Electrigh
 london@electrigh.com
 www.electrigh.com
 13 Christopher Street
 London
 EC2A 2BS



NOTES
 - All lighting symbols are to be placed on the floor plan and not on the elevation drawing.
 - Control groups are to be based on the electrical load of the area.
 - The lighting layout is based on the electrical load of the area.
 - The lighting layout is based on the electrical load of the area.
 - The lighting layout is based on the electrical load of the area.
 - The lighting layout is based on the electrical load of the area.



Wall mounted semi-recessed LED wall light to illuminate terrace floor

Exterior rated in ground narrow beam linear LED up lights

EXTERNAL TERRACE AREA

CK/EL/05D

0	17.02.15	Update To Final Design	CK
C	12.12.14	Value Engineering Update	CK
B	03.08.14	Update to revised architecture	CK
A	16.05.14	Update to revised architecture	CK
REV	DATE	ISSUE	OWN
CLIENT Argent LLP			
ARCHITECT Porphyrios Associates			
PROJECT TITLE 3 Pancras Square, King's Cross, London, UK			
DRAWING TITLE 9th Floor Exterior Lighting Plan			
REVISION	DATE		
D	28.04.2014		
JOB NO	0059	DRAWING NO	EL_0059_100
SCALE (A1)	1:100@A1	DRAWN	C Knowlton
CHECKED			