



PHOTO A

(Existing front elevation showing Leylandii to basement wall showing the gaps in between, this is a hazard for young children)



PHOTO B

(Existing basement wall offering minimal safety to young children and showing the high drop)

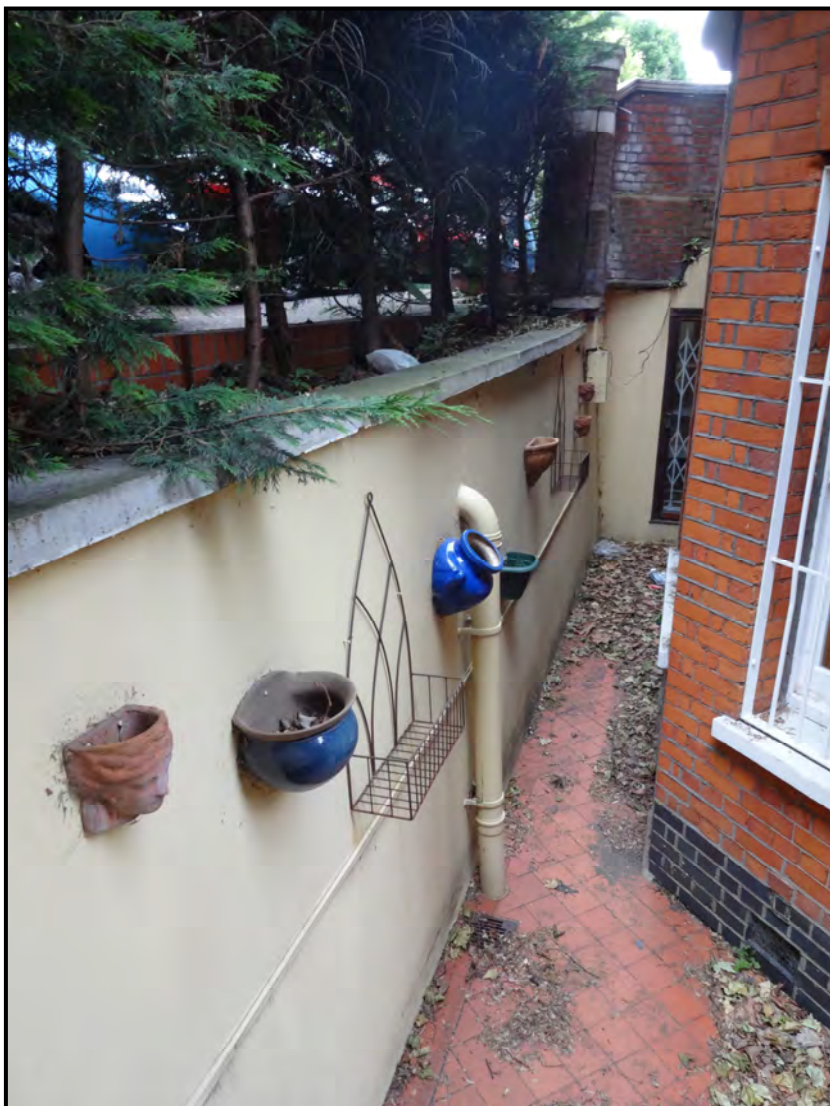


PHOTO C

(Existing low level wall showing trip hazard for young children)

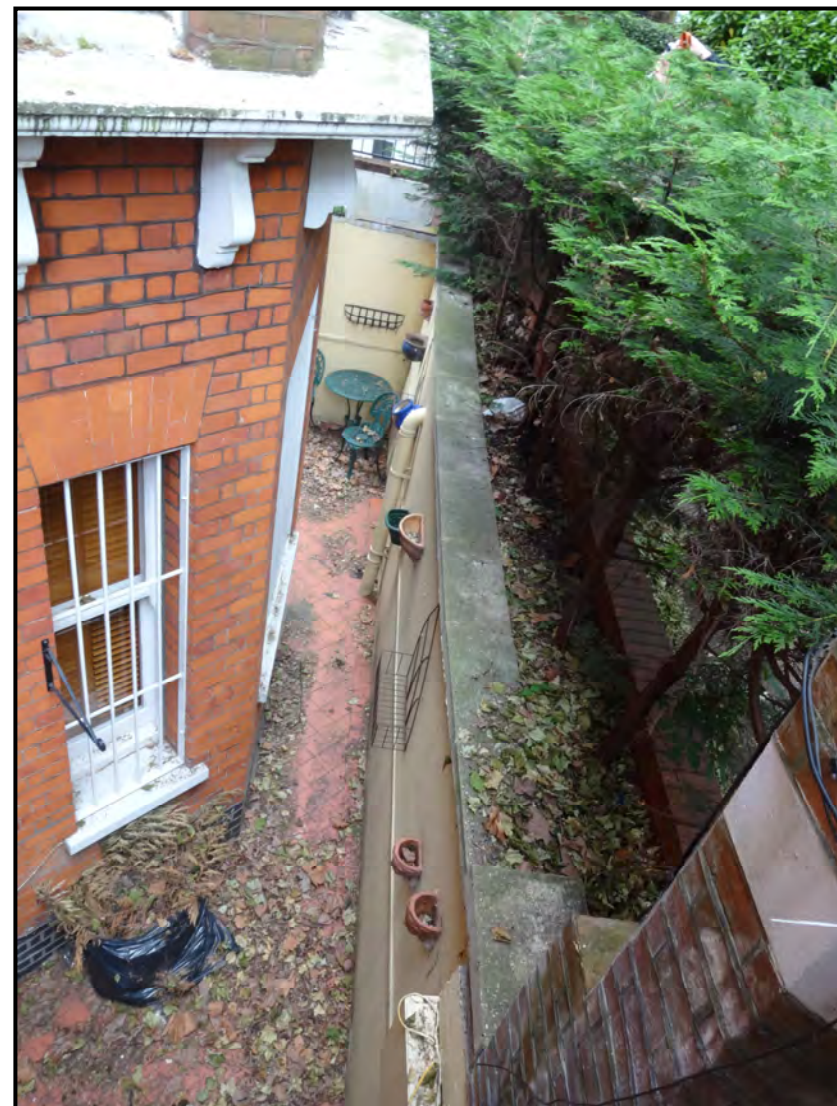


PHOTO D

(Existing front basement lightwell)