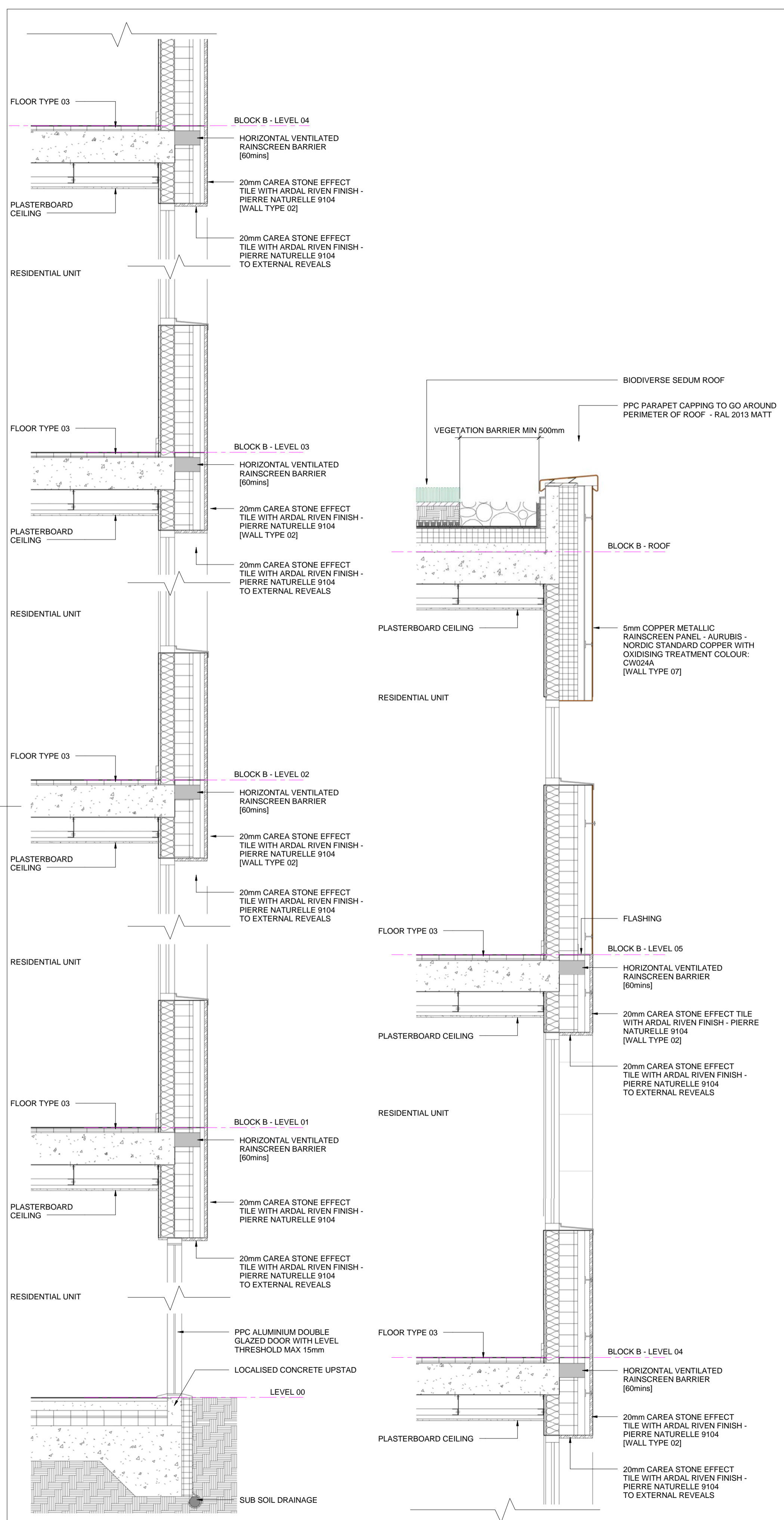
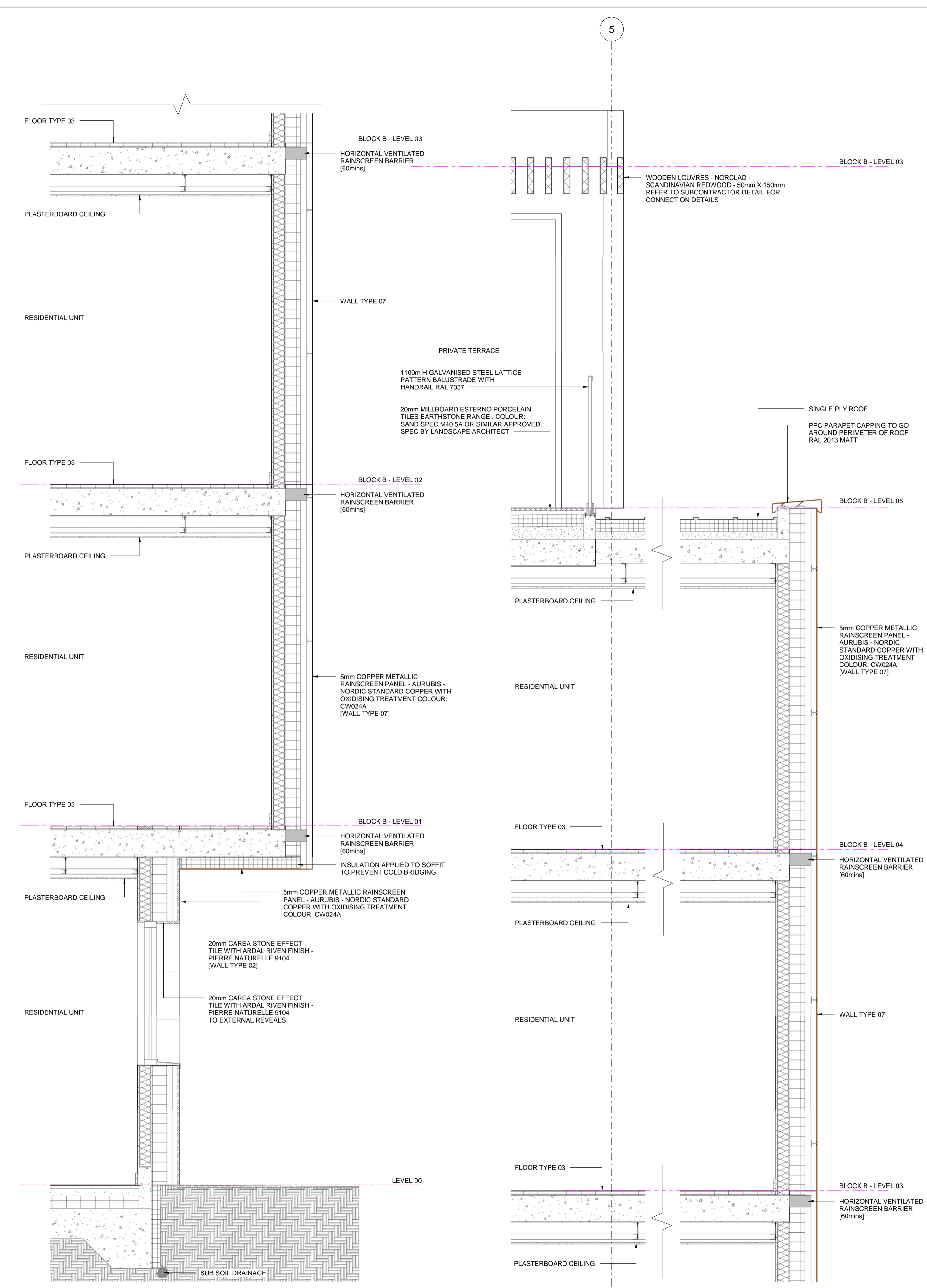


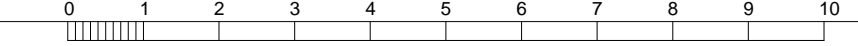
| REVISION DETAILS | | DATE | DRW | CHK |
|------------------|--|----------|-----|-----|
| A | Planning Details Issued to IPS | 23.03.15 | KM | DMA |
| B | Discharge of Planning Condition 2 | 09.04.15 | KM | DMA |
| C | Revised Details for Discharge of Planning Condition 2a+b | 13.10.15 | KM | DMA |



1 DETAILED SECTION - NORTH ELEVATION (1)
1 : 20

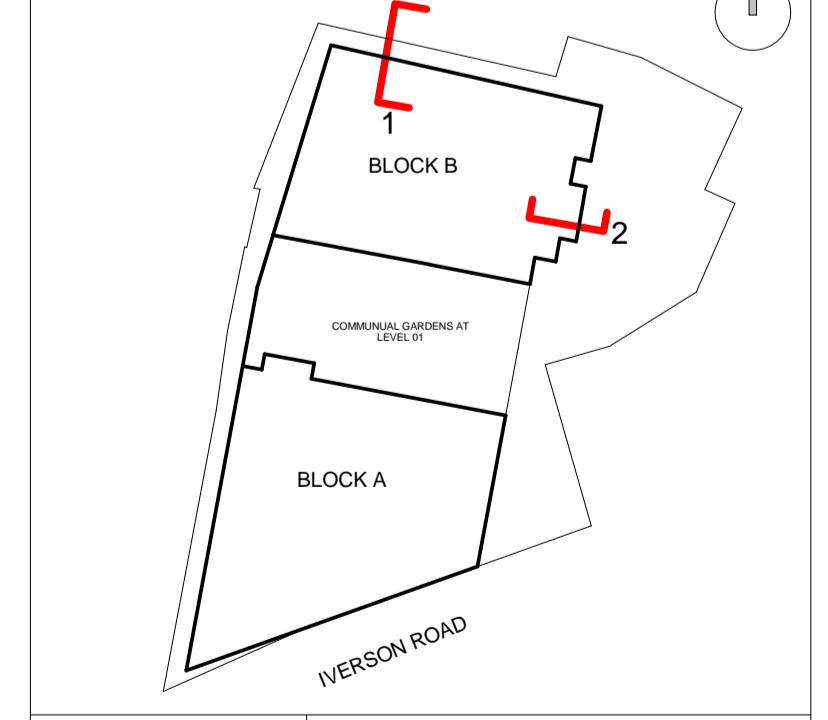


2 DETAILED SECTION - EAST ELEVATION A (1)
1 : 20



NOTE: DRAWINGS TO BE READ IN CONJUNCTION WITH SHEET 474

KEY RESIDUAL RISK



| | | |
|--|---|---------------------------|
| ORIGINATOR davidmillerarchitects WWW.DAVID-MILLER.CO.UK | DRAWING TITLE DETAILED SECTION SHEET (1) | STATUS FOR INFORMATION |
| JOB TITLE 159-161 IVERSON ROAD, WEST HAMPSTEAD, LONDON, NW6 2RB | JOB NO 335 | DATE 03/03/15 |
| PROJECT ORIGIN IVR | SCALE 1 : 20 | CHECKED DMA |
| ZONE ALL | LEVEL SL | APPROVED DMA |
| TYPE DET | ROLE A3 | SEQ NO 826 |
| REV C | | |