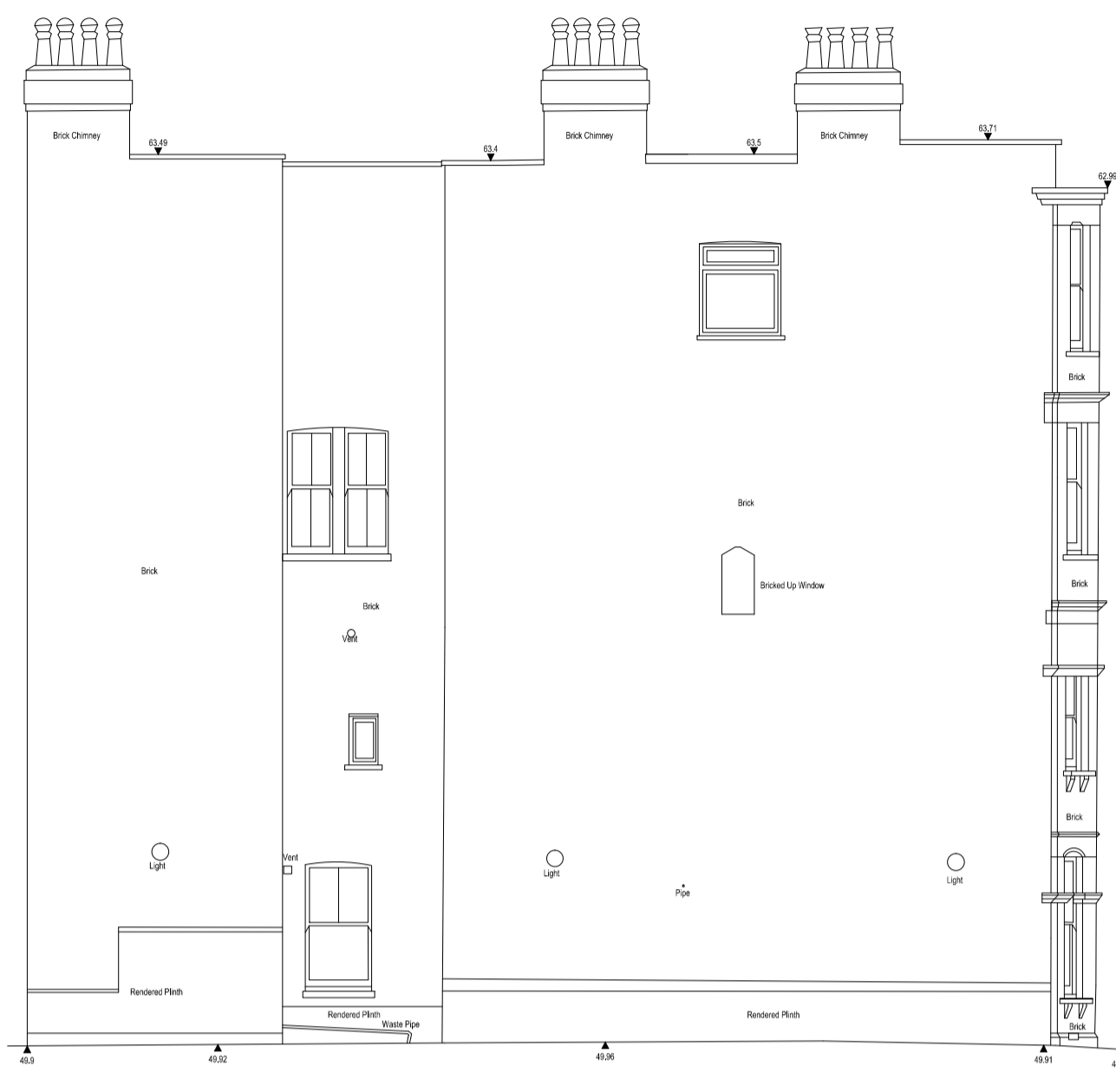
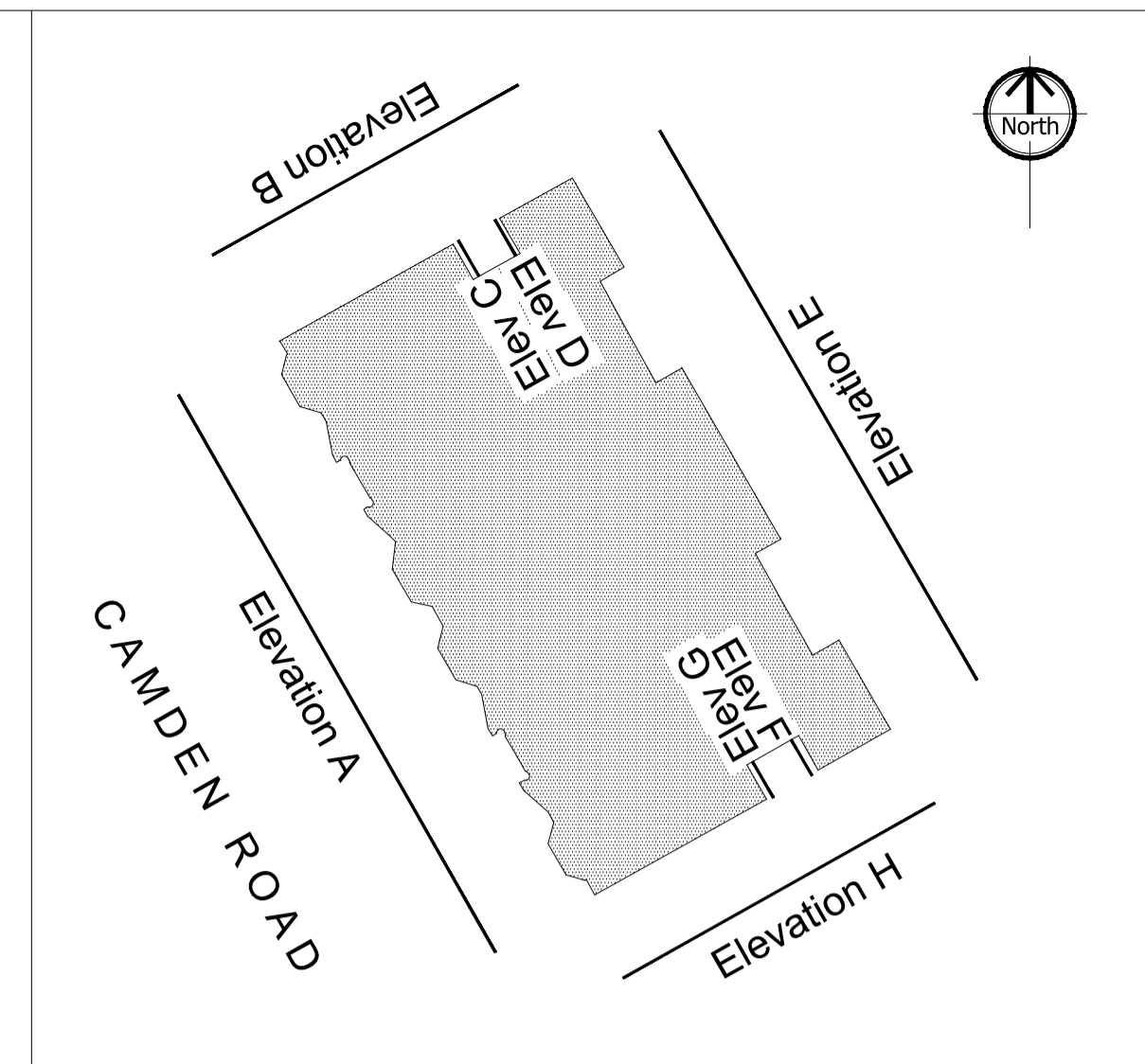




Elevation A



Elevation B



Orientation

Grid Plan co-ordinates relate to an arbitrary datum.

Levels Levels relate to an arbitrary datum. Entrance level of Norbiton House used, value given = 50.00m

Notes:

Legend

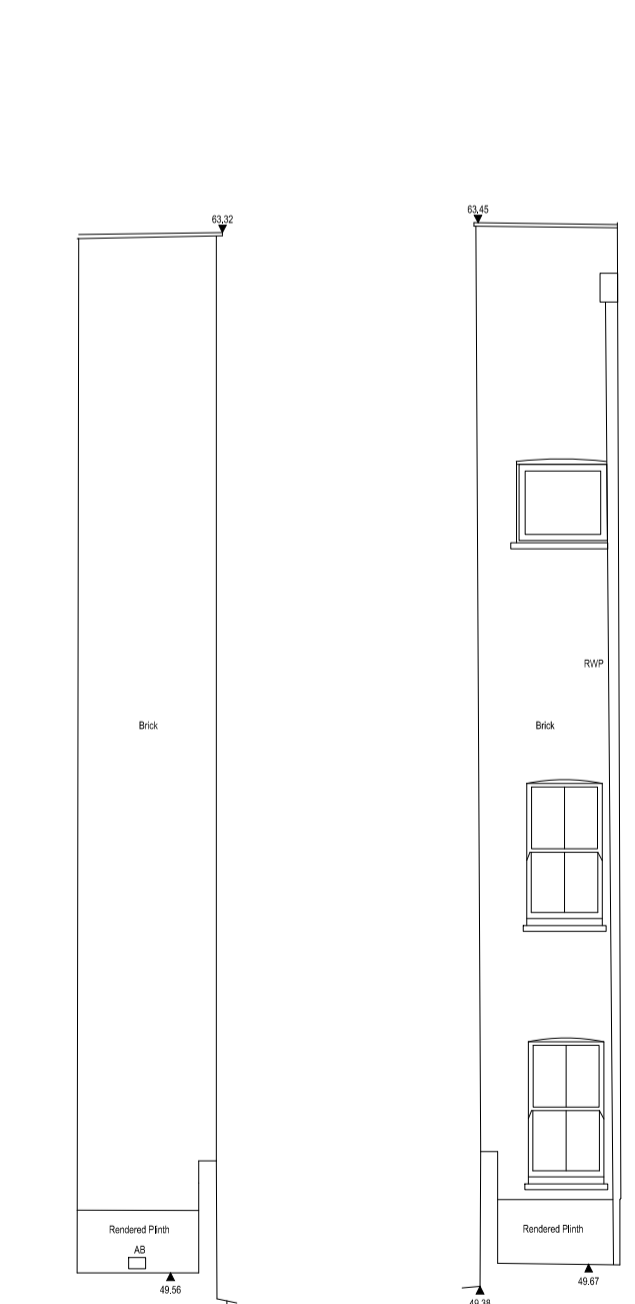
AB	Air Brick	I/R	Iron Railings
B	Bollard	Lt	Light
C/B	Close Boarded	P	Post
CH	Cill to Head	Pe	Pipe
C/L	Chain Link	P/R	Post & Rail
Col.	Column	P/W	Post & Wire
Cpd	Cupboard	RD	Roller Door
CR	Crown Level	RE	Rodding Eye
DH	Door Height	RWP	Rainwater Pipe
Dr	Drain	SD	Sliding Doors
FE	Fire Exit	S	Sill Height
FC	Floor to Cill	SP	Spring Point
FL	Floor Level	SVP	Soil & Vent Pipe
FW	Foul Water	SW	Surface Water
MH	Manhole	US	Underside
G	Gully	UTL	Unable To Lift
H	Window Head Ht	VP	Vent Pipe
IC	Inspection Chamber	Vt	Vent
IL	Invert Level	WT	Water Tap

(2.70) Floor to Ceiling Ht (F2.70) False Ceiling Ht

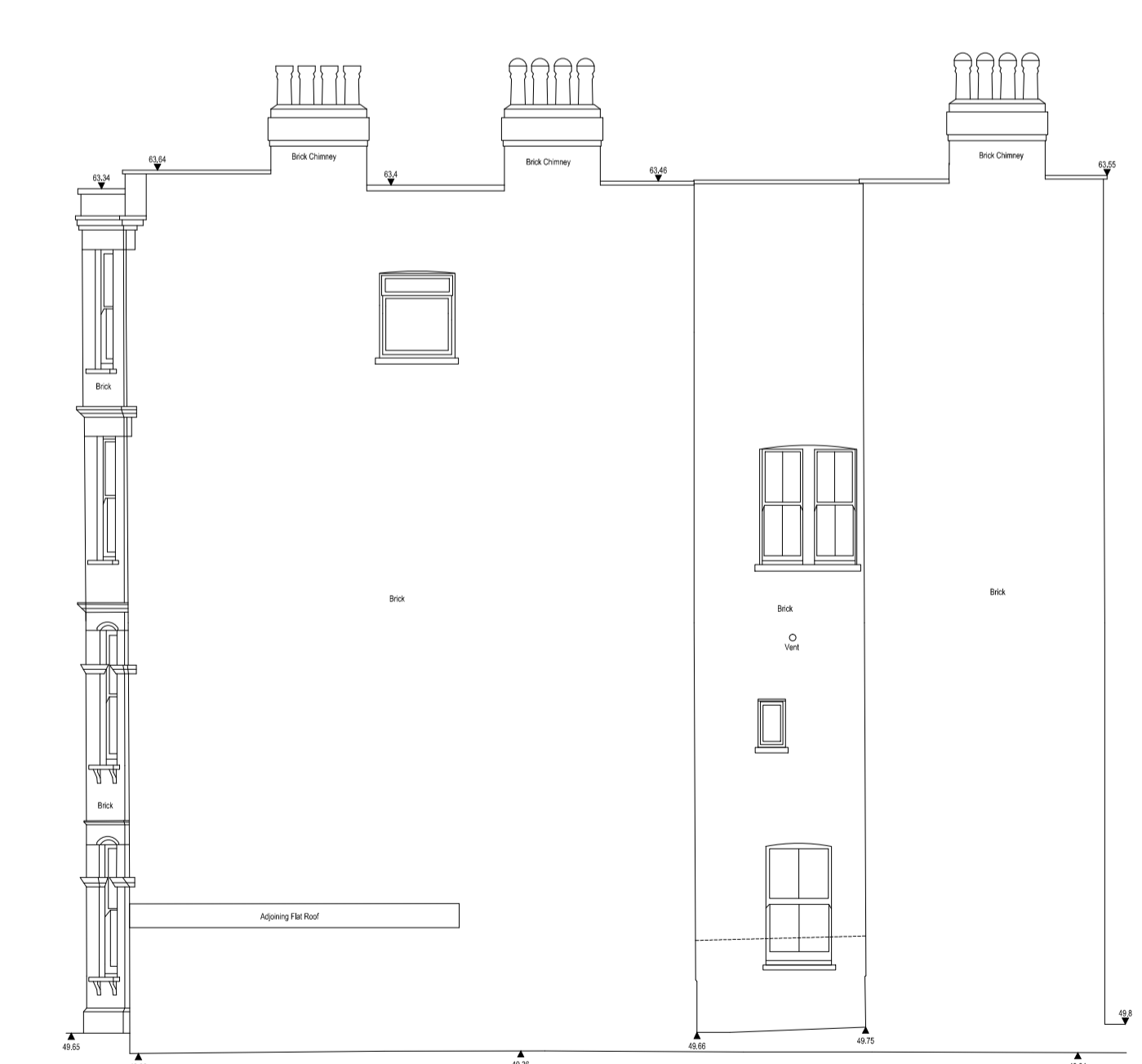
Mains Point	>	Stairs/Steps (UP)	↗
Blank Plate	⊃	Isolator Switch	⊃
Light	⊗	Water Stop Tap	⊗
Strip Light	⊖	Overhead Features	---
Switch	⋈	Joist Span Direction	↔
Pendant Switch	⋈	Sloping Ceiling (Up)	↗



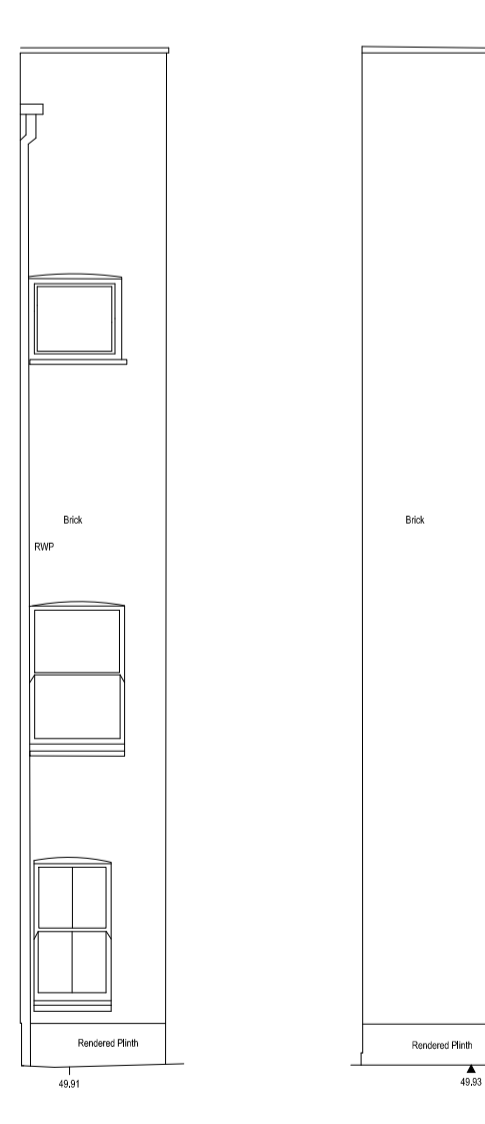
Elevation E



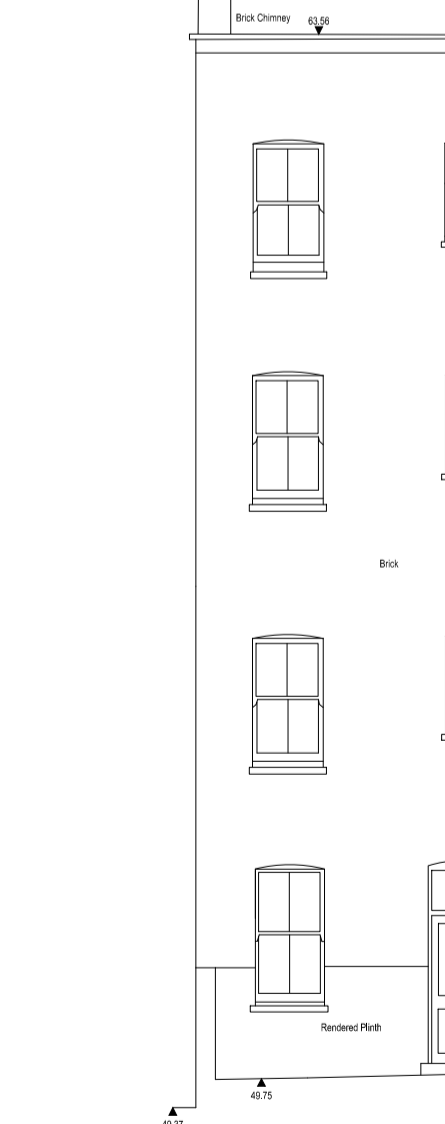
Elevation F



Elevation H



Elevation C



Elevation D

Key:

Issue:	24.08.15	RP
Rev No.	Revision Note	Date Signed
1		

Unit 14
 40A Kent Road
 Northampton, NN5 4DR
 Tel: 01604 582200
 mail@aimcon.co.uk
 www.aimcon.co.uk

TOPOGRAPHICAL SURVEYS
 ENGINEERING SURVEYS & SETTING OUT

MEASURED BUILDING SURVEYS
 BOUNDARY DISPUTES

Client London Borough of Camden

Title ELEVATIONS
Norbiton & Kingston House

Site Camden Road
London NW1 0LD

Surveyed KP Date 24 August 2015

Sheet No 1 of 2 Scale 1/100 @ A1

Dwg No. 01-1625 Rev. A