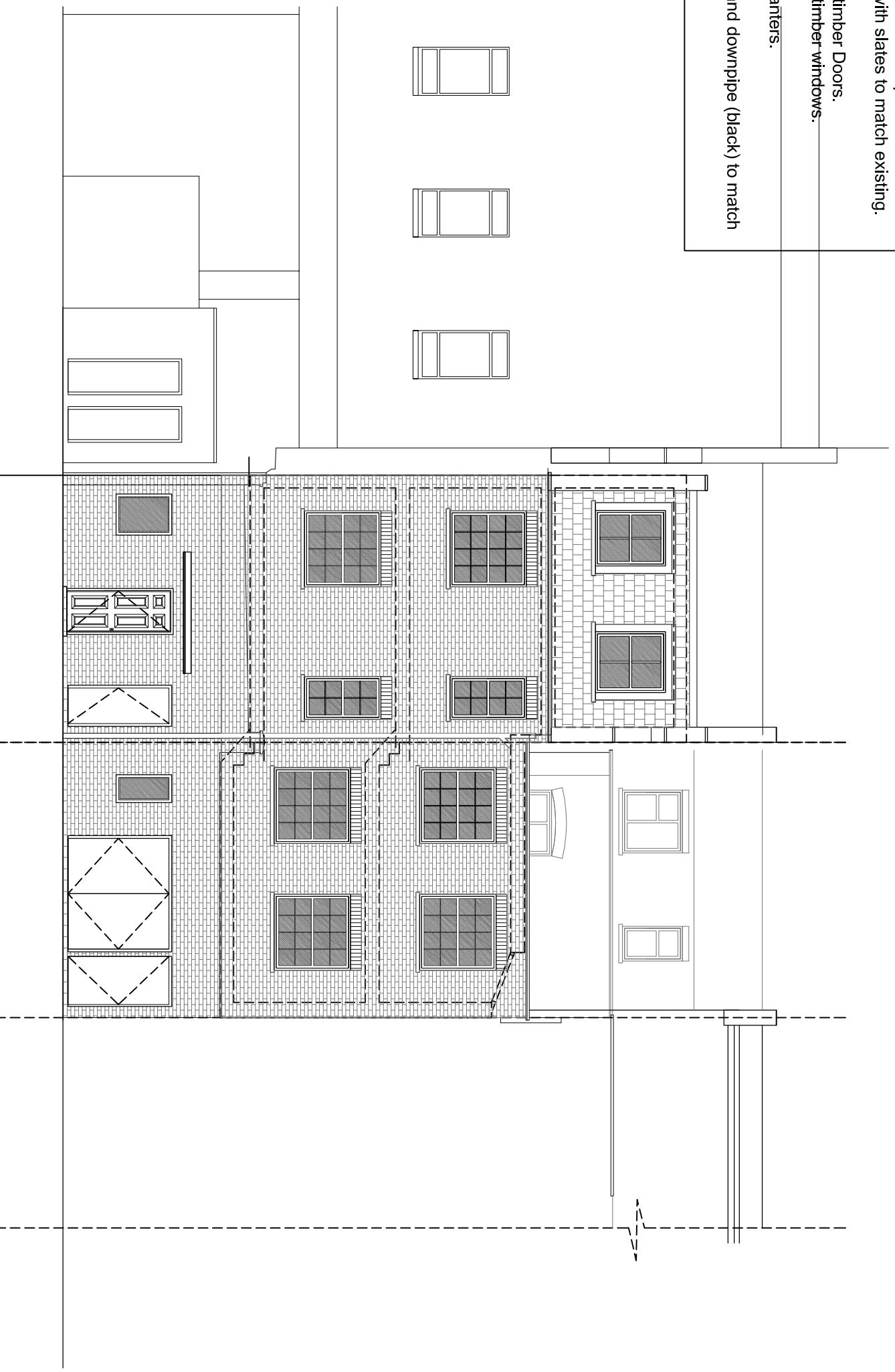
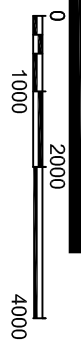


- Legend of Materials:**
- Walls:**
 1. Facing brickwork to match existing.
- Roof:**
 2. Flat roof terrace finished with three layers felt.
 3. Roof terrace finished with pavers.
 4. Mansard roof with slates to match existing.
- Windows/Doors:**
 5. White painted timber Doors.
 6. White painted timber windows.
- Planters**
 7. Timber clad planters.
- Drainage:**
 8. UPVC Gutter and downpipe (black) to match existing.



4D EXISTING APPROVED REAR ELEVATION

SCALE 1:100



Client		Drawing Title		Project Number		Drawing Number	
78 Camden High Street, London, NW1 0LT		Existing Approved Rear Elevation		14/0126		14-126-64	
Project Title		Rev. Date		Scale		Sheet No.	
		Description		1:100 @A3		Rev.	
Rev. By		Rev. Date		Date		Revised	
Ckd By		Description		19/10/15		-	
Status		Rev. Date		Revised		-	
-		-		-		-	