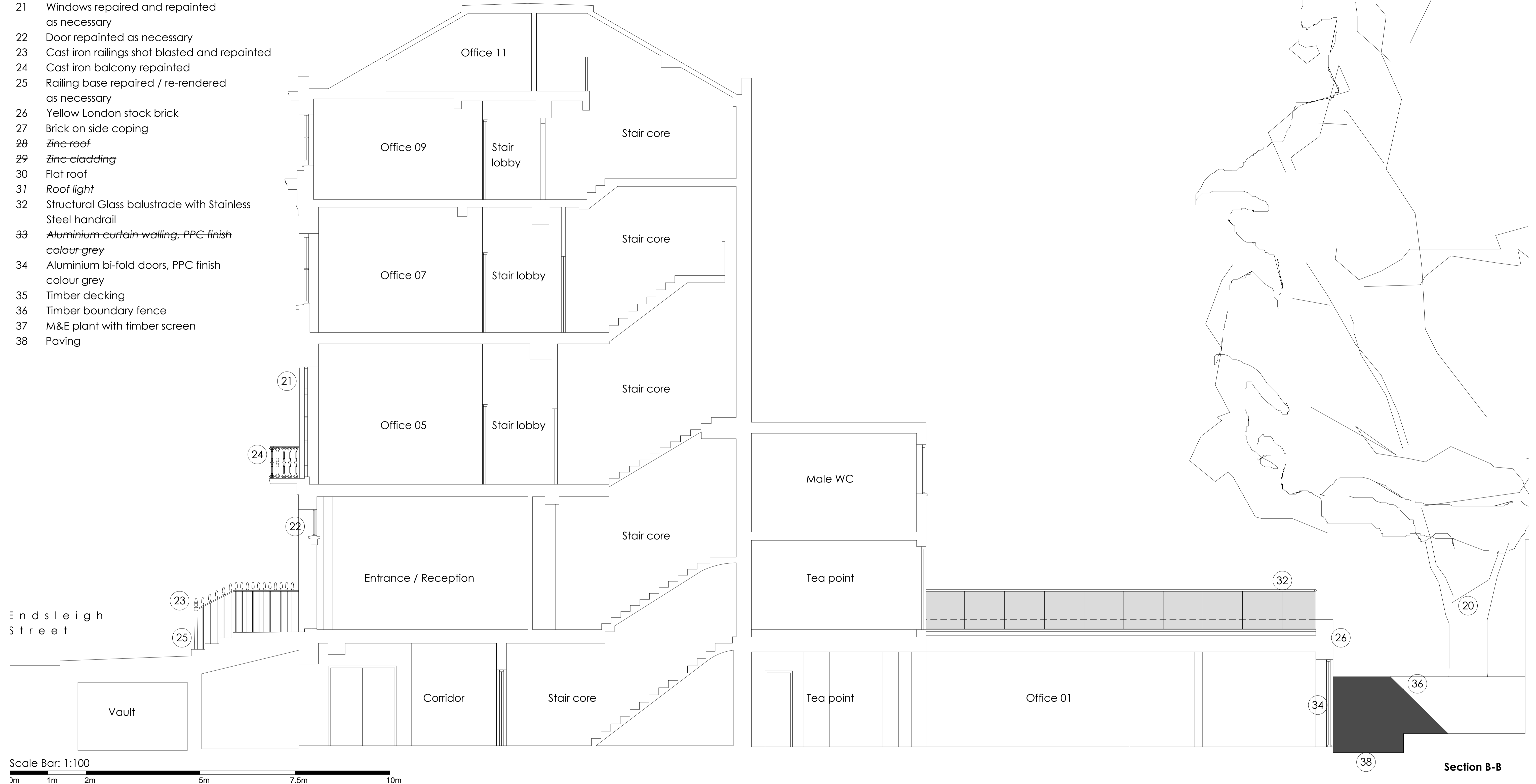


Annotation Key

- PROPOSED
- 21 Windows repaired and repainted as necessary
- 22 Door repainted as necessary
- 23 Cast iron railings shot blasted and repainted
- 24 Cast iron balcony repainted
- 25 Railing base repaired / re-rendered as necessary
- 26 Yellow London stock brick
- 27 Brick on side coping
- 28 Zinc roof
- 29 Zinc cladding
- 30 Flat roof
- 31 Roof light
- 32 Structural Glass balustrade with Stainless Steel handrail
- 33 Aluminium curtain walling, PPC finish colour grey
- 34 Aluminium bi-fold doors, PPC finish colour grey
- 35 Timber decking
- 36 Timber boundary fence
- 37 M&E plant with timber screen
- 38 Paving



Scale Bar: 1:100
 0m 1m 2m 5m 7.5m 10m

Rev	Date	Revision description	Initial	Checked
A	08.05.15	Planning application submission	MA	HJ
B	14.05.15	Planning application submission	MA	HJ
C	16.10.15	Extension omitted from Section due to relocation to Planning Authority Comments	JB	MA

Notes

This drawing is copyright and must not be reproduced or disclosed to third parties without the prior written permission of Rio architects Limited.

Do not scale this drawing. Responsibility is not accepted by Rio architects limited for errors made by others in scaling from this drawing.

Use only written dimensions. Contractor must verify all dimensions before commencing work and any discrepancies are to be notified in writing to Rio architects limited immediately.

This drawing is to be read in conjunction with all relevant project drawings and specifications prepared by Rio architects limited and other relevant consultants, specialists etc.

All survey information incorporated within this drawing cannot be guaranteed as accurate unless confirmed by a fixed dimension.

All dimensions are in millimetres unless noted otherwise.

CDM notes are provided to assist the contractor in managing residual hazards identified during the design stage. Any such notes do not relieve the contractor of his duties and he must provide a safe system of work of work based on method statements, risk assessments etc.

DRAWING TITLE Proposed long section - B-B		
Job No: 0235	Drawing No: AX 101	Rev: C
Scale: 1:100@A3	Drawn By: MA	Checked By: HJ
Drawn Date: 14/04/15	Checked Date: 14/04/15	
Drawing Status PLANNING		

CLIENT Endsleigh Street 4 Limited
PROJECT NAME 4 Endsleigh Street London

RiO architects www.rioarchitects.com

Y Stiwldio, 21a Allensbank Road, Cardiff, CF14 3PN

tel 44 (0) 2920 250066
 email studio@rioarchitects.com
 facebook www.facebook.com/RioArchitectsLtd
 linkedin www.linkedin.com/company/rio-architects