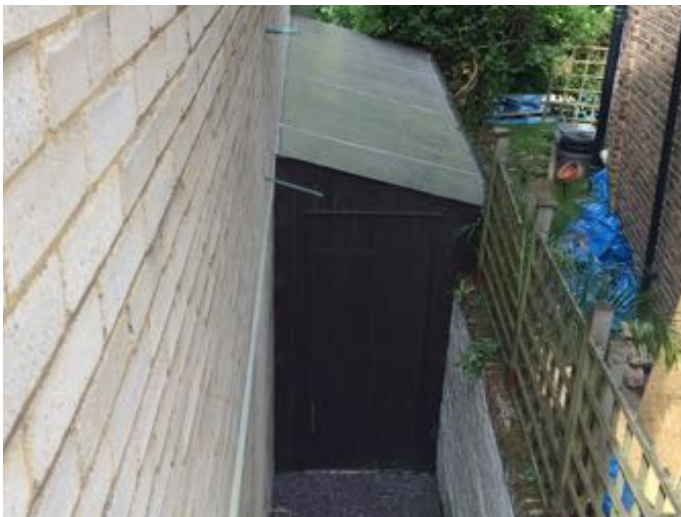


90 South Hill Park, Record of Strip out and Demolitions

Date	Photo/Location	Comments
10 Sep 2014	Before commencement of any works	



view from street






side lean-to extension




spiral stair to rear balcony

90 South Hill Park, Record of Strip out and Demolitions

Date	Photo/Location	Comments
		
	living room	
		
	living room looking to rear	
		
	stairs with cinder block partitions	

90 South Hill Park, Record of Strip out and Demolitions

Date	Photo/Location	Comments
		
	<p data-bbox="225 703 443 734">stairs showing boxing</p> 	
	<p data-bbox="225 1258 424 1290">roof light over stairs</p> 	
	<p data-bbox="225 1814 515 1845">corridor on lower ground floor</p>	

90 South Hill Park, Record of Strip out and Demolitions

Date Photo/Location Comments



entrance hall and bedroom



ground floor bedroom



ground floor WC

90 South Hill Park, Record of Strip out and Demolitions

Date Photo/Location Comments



front door



first floor living room



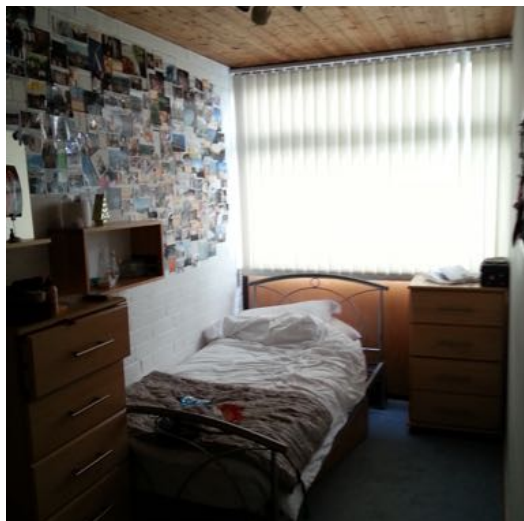
first floor living room

90 South Hill Park, Record of Strip out and Demolitions

Date Photo/Location Comments



first floor mezzanine kitchen



second floor front bedroom



second floor dressing room

90 South Hill Park, Record of Strip out and Demolitions

Date Photo/Location Comments



second floor landing



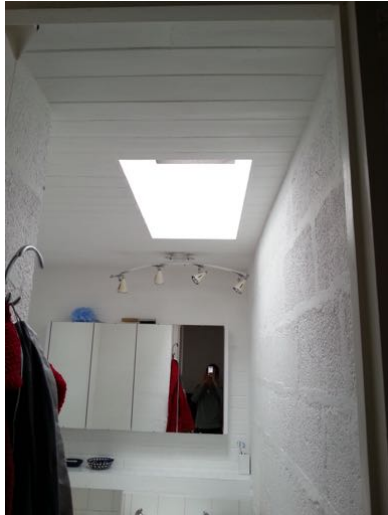
second floor read bedroom



roof light over WC

90 South Hill Park, Record of Strip out and Demolitions

Date Photo/Location Comments



roof light over bathroom



lower ground floor corridor



lower ground floor utility area



90 South Hill Park, Record of Strip out and Demolitions

Date	Photo/Location	Comments
		
	<p>lower ground floor utility area</p>	
		
	<p>lower ground floor kitchen</p>	
		
	<p>lower ground floor bathroom</p>	

90 South Hill Park, Record of Strip out and Demolitions

Date Photo/Location Comments



lower ground floor living room



lower ground floor living room



lower ground floor at rear

90 South Hill Park, Record of Strip out and Demolitions

Date	Photo/Location	Comments
		<p>No glass panel to handrail on second floor.</p> <p>Timber strip platforms for access to clean fixed glazing at mezzanine level.</p> <p>Original timber framed to fixed glazing at mezzanine level.</p> <p>Brown powder-coated aluminium framed sliding door system to second floor and upper and lower ground floors.</p>

rear elevation

90 South Hill Park, Record of Strip out and Demolitions

Date Photo/Location Comments

21 Nov 2014 Soft strip and exploratory works undertaken to find location of services



living room concrete fireplace with asbestos flue



living room/mezzanine timber bench with copy handrail



first floor living room

90 South Hill Park, Record of Strip out and Demolitions

Date	Photo/Location	Comments
------	----------------	----------



beam and block structure of second floor visible above skim plaster coat

ceiling to first floor living room following removal of joinery



inside of service riser in stairs

27 Jan 2015 Full strip-out works underway



fibre panels over timber joists with wire bracing (all retained)

second floor roof structure from beneath

90 South Hill Park, Record of Strip out and Demolitions

Date	Photo/Location	Comments
------	----------------	----------



second floor rear bedroom floor



bathroom roof light



concrete screed

second floor front bedroom floor

90 South Hill Park, Record of Strip out and Demolitions

Date Photo/Location Comments

water tank



second floor rear of shower room

16 Feb 2015 Internal strip-out works complete



looking to front

second floor



looking to rear

second floor

90 South Hill Park, Record of Strip out and Demolitions

Date Photo/Location Comments



wire ties



first floor



kitchen area in use as site kitchen

lower ground floor



90 South Hill Park, Record of Strip out and Demolitions

Date Photo/Location Comments



ground works to side of building



side extension demolished

5 Mar 2015 Formation of below stairs plant area



timber framing to new plant area

90 South Hill Park, Record of Strip out and Demolitions

Date Photo/Location Comments



existing reinforced concrete stairs

19 Mar 2015 Internal works underway pending planning approval for extension



concrete repairs requires

ceiling to new LG floor shower room



ceiling dry-lined and plastered, floor repaired with self levelling screed.

second floor joinery for services

90 South Hill Park, Record of Strip out and Demolitions

Date Photo/Location Comments



second floor screed

8 May 2015



below stairs plant area